

**DEPARTMENT OF TRANSPORTATION  
TRUNK HIGHWAY SYSTEM  
CHAPTER PARTS: 8810.8000 - 8810.8500**

**Extract from 1991 MN Rules including  
Amendments adopted on February 4, 1991**

Printed  $\frac{4}{\text{Month}}$  /  $\frac{91}{\text{Year}}$



**Text Provided By**

**The Office of Revisor of Statutes  
7th Floor, State Office Building, St. Paul, MN 55155**

**Prepared By**

**Print Communication Division  
(Minnesota's Bookstore)  
117 University Avenue (Ford Bldg.) St. Paul, MN 55155  
Metro: 612-297-3000, MN Toll Free: 1-800-657-3757**

**Distributed By**

**Department of Transportation  
395 John Ireland Boulevard  
St. Paul, MN 55155**

REVISOR'S CERTIFICATE

I, Steven C. Cross, am the revisor of statutes for the Minnesota Legislature. I am charged by law to edit and publish the compiled rules for the State of Minnesota. This extract was prepared from the same copy used in Minnesota Rules 1991. This is a true copy of the rules as they existed on February 4, 1991.

  
STEVEN C. CROSS  
REVISOR OF STATUTES

CHAPTER 8810  
DEPARTMENT OF TRANSPORTATION  
TRUNK HIGHWAY SYSTEM

BRIDGE CONSTRUCTION AND RECONSTRUCTION

- 8810.8000 DEFINITIONS.
- 8810.8100 PURPOSE AND SCOPE.
- 8810.8110 ELIGIBILITY; RESTRICTION.
- 8810.8200 APPLICATION FOR CONSTRUCTION OR RECONSTRUCTION GRANTS.
- 8810.8300 REVIEW BY REGIONAL DEVELOPMENT COMMISSION OR METROPOLITAN COUNCIL.
- 8810.8400 ESTABLISHMENT OF PRIORITIES.
- 8810.8500 BRIDGE AND ROADWAY SPECIFICATIONS.

BRIDGE CONSTRUCTION AND RECONSTRUCTION

**8810.8000 DEFINITIONS.**

Subpart 1. **Abandonment.** "Abandonment" means the abandoning of an existing bridge.

Subp. 1a. **Agency.** "Agency" means a county, municipality, or township.

Subp. 2. **Bridge.** "Bridge" is defined as a structure including supports erected over a depression or an obstruction such as water, highway, or railway, having a track or passageway for carrying traffic or other moving loads, and having an opening measured horizontally along the center of the roadway of ten feet or more between undercopings of abutments, between spring line of arches, or between extreme ends of openings for multiple boxes. Bridge also includes multiple pipes where the clear distance between openings is less than half of the smaller contiguous opening. Illustrations of measurements are shown as Figures 1 to 4. This definition of a bridge includes, for application of parts 8810.8000 to 8810.8500, only those railroad bridges over or under a public highway or street.

FIGURE 1: MEASUREMENT OF BRIDGE BETWEEN UNDERCOPINGS

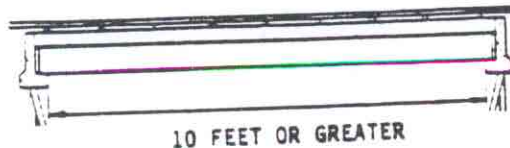
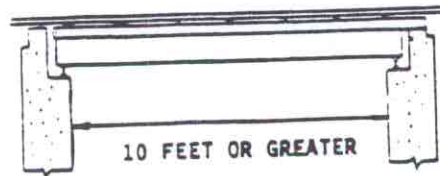


FIGURE 2: MEASUREMENT OF STRUCTURE BETWEEN SPRING LINES

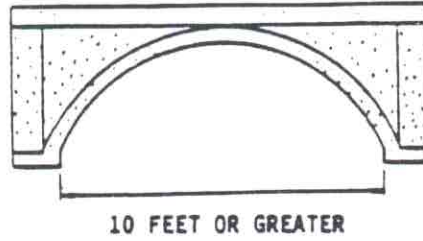
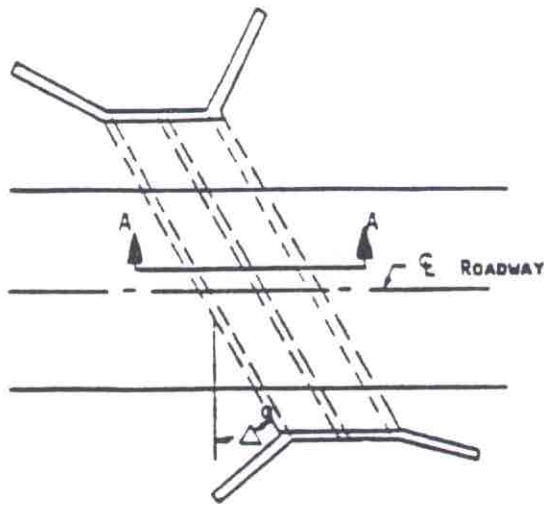
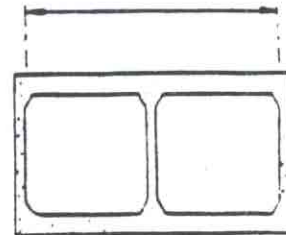


FIGURE 3: MEASUREMENT OF BOX CULVERTS

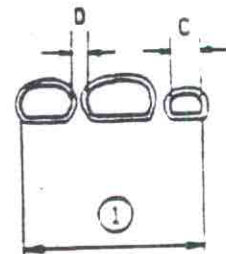
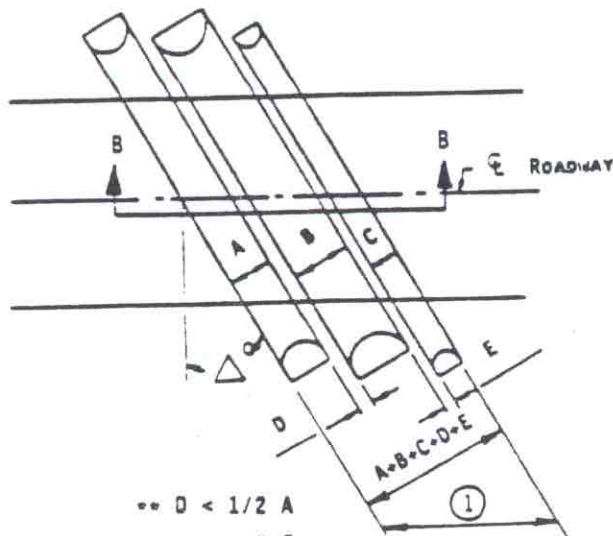


10 FEET OR GREATER  
BETWEEN EXTREME END OPENINGS  
OF MULTIPLE BOX CULVERTS



SECTION A-A

FIGURE 4: MEASUREMENT OF MULTIPLE CULVERTS



SECTION B-B

10 FEET OR GREATER  
BETWEEN EXTREME END OPENINGS  
OF MULTIPLE PIPE CULVERTS

$\bullet\bullet$  THE SPACE BETWEEN ADJACENT PIPE CULVERTS OPENINGS MUST BE LESS THAN ONE HALF THE SMALLER CONTIGUOUS OPENING

Subp. 3. **Commissioner.** "Commissioner" means the commissioner of transportation.

Subp. 4. **Construction.** "Construction" means the construction of a road, street, or bridge to replace an existing deficient bridge or a bridge that has been destroyed.

Subp. 5. **Metropolitan council.** "Metropolitan council" means a commission established in accordance with Minnesota Statutes, chapter 473.

Subp. 6. **Reconstruction.** "Reconstruction" means the reconstruction of an existing deficient bridge.

Subp. 7. **Regional development commission.** "Regional development commission" means a commission established by the state planning officer in accordance with Minnesota Statutes, chapter 462.

Subp. 8. **Road systems defined.** "Other roads or streets" means those local roads and streets, not on the state-aid system, under the jurisdiction of the counties, municipalities, and townships.

"State-aid" means the system of roads and streets established and designated by the commissioner under the jurisdiction of a county or urban municipality.

"Trunk highway" means the system of routes established by law, the location of which has been established by the commissioner under the jurisdiction of the state of Minnesota.

Subp. 9. **Urban municipality.** "Urban municipality" means any city having 5,000 or more population determined in accordance with the provisions of law.

**STAT AUTH:** MS s 174.50

**HIST:** 15 SR 963

#### **8810.8100 PURPOSE AND SCOPE.**

Subpart 1. **Purpose.** The purpose of parts 8810.8000 to 8810.8500 is to carry out the mandate of the legislature and to implement that mandate as set forth in Minnesota Statutes, section 174.50.

Subp. 2. **Scope.** The scope of parts 8810.8000 to 8810.8500 is intended to be confined within the framework of and consistent with Minnesota Statutes, section 174.50.

**STAT AUTH:** MS s 174.50

**HIST:** 15 SR 963

#### **8810.8110 ELIGIBILITY; RESTRICTION.**

For purposes of eligibility for funding under parts 8810.8000 to 8810.8500, some restrictions apply as follows:

A. Railroad bridges are eligible only if they are under the jurisdiction of a local unit of government. The replacement of a private bridge owned by a railroad company is not eligible.

B. A bridge to be constructed where no previous bridge exists is not eligible.

**STAT AUTH:** MS s 174.50

**HIST:** 15 SR 963

**8810.8200 APPLICATION FOR CONSTRUCTION OR RECONSTRUCTION GRANTS.**

Subpart 1. **Counties.** The county board in cooperation with other local units of government within the county, other than urban municipalities, shall determine a proposed program for the construction or reconstruction of key bridges within the county other than urban municipal or trunk highway bridges.

This county board by resolution shall request of the commissioner authorization to construct or reconstruct specific bridges or remove an abandoned bridge within the county and request funding.

When local units of government cannot reach agreement with the county board, the local units of government may apply independently. Then the local unit of government by resolution shall request of the commissioner authorization to construct or reconstruct specific bridges or remove an abandoned bridge and request funding.

Subp. 2. **Urban municipalities.** The city council by resolution shall request of the commissioner authorization to construct or reconstruct specific bridges or remove an abandoned bridge within the municipality and request funding.

Subp. 3. **State highway system.** The commissioner shall establish the bridge construction and/or reconstruction program for the trunk highway system.

**STAT AUTH:** MS s 174.50

**HIST:** 15 SR 963

**8810.8300 REVIEW BY REGIONAL DEVELOPMENT COMMISSION OR METROPOLITAN COUNCIL.**

The commissioner shall submit the application of the agencies to the proper regional development commission or metropolitan council, as the case may be, for review of consistency with long-term comprehensive development plans and guides for which the agencies are responsible.

**STAT AUTH:** MS s 174.50

**HIST:** 15 SR 963

**8810.8400 ESTABLISHMENT OF PRIORITIES.**

The commissioner, using information furnished by the local units of governments from the statewide bridge inventory, shall establish a statewide priority of bridge construction or reconstruction.

This priority must be based on the relative seriousness of each bridge's deficiencies as determined from the inventory and appraisal after considering the following criteria established in Minnesota Statutes, section 174.50, subdivision 6:

A. effectiveness of the project in eliminating a deficiency in the transportation system;

- B. number of persons affected by the deficiency;
- C. economic feasibility;
- D. effect on optimum land use and other concerns of state and regional planning;
- E. availability of other financing capability; and
- F. adequacy of provision for proper operation and maintenance after construction.

When the required documentation has been completed, construction plans are complete, and priorities have been established, the commissioner shall notify the local units of government, as to funding availability from the Minnesota state transportation fund or federal funds.

The local unit of government shall by resolution agree to the terms and conditions specified in the notification by the commissioner consistent with Minnesota Statutes, section 174.50, subdivision 5, clause (3).

**STAT AUTH:** MS s 174.50

**HIST:** 15 SR 963

#### **8810.8500 BRIDGE AND ROADWAY SPECIFICATIONS.**

The minimum geometric standards for bridge construction and roadway construction are as described in chapter 8820.

**STAT AUTH:** MS s 174.50

**HIST:** 15 SR 963