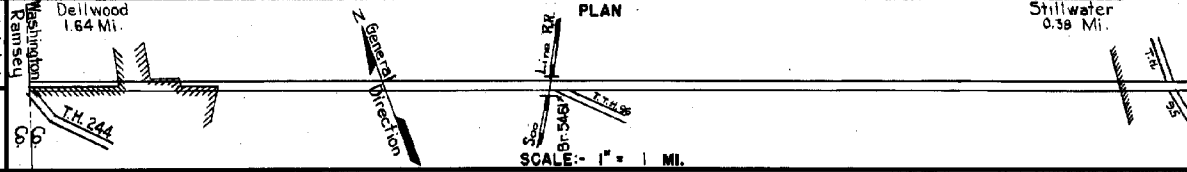


PREPARED BY
HIGHWAY PLANNING SURVEY
IN COOPERATION WITH
U. S. PUBLIC ROADS ADMINISTRATION

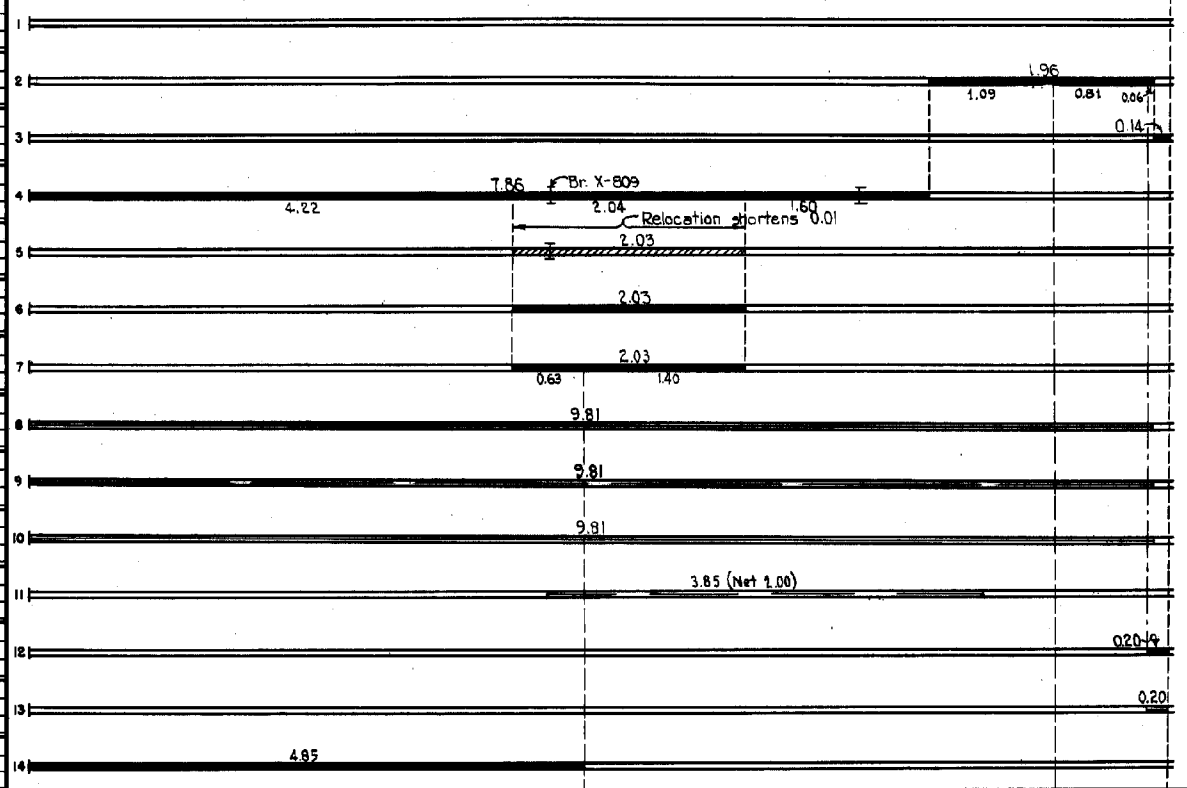
STATE OF MINNESOTA
DEPARTMENT OF HIGHWAYS
ROAD LIFE STUDIES
CONSTRUCTION PROJECT LOG RECORD

CONTROL SECTION 8211
TRUNK HIGHWAY 96
COUNTY Washington
DISTRICT 9A

LIMITS: Jct. T.H. 244 (W. Co. Line - W. Limits of Dellwood) - Jct. T.H. 95 in Stillwater



YEAR BUILT	PROJECT N°	DESCRIPTION			REMARKS	CODE N°
		TYPE	WIDTH	THICKNESS		
						No Record of Constr.
		Tar Tr. Gravel	24'	1 1/2"		Added in 1934
		Brick	40'			No Record of Constr.
						Added in 1934
1931		Tar Tr. Gravel Br X-809 & 8426	24'	1 1/2"		Co. Job 310. Added in 1934. 11279 Gal./Mi. WPT-UP & B.S.
1936	96-96-21-2A	Grading Br 546	32'			B.S. - UP.
	(1)					
1936	96-96-21-2A	Gravel	24'	2"		Maint. Dept.
1937	A.F.E. 23	Mixed Bit.	24'	1 1/2"		Maint. Dept.
M	1940 A.F.E. 46	Bit. Retreat.	22'			RT-6, 3835 Gal./Mi. Grav. 200 C.Y./Mi. Maint. Dept.
M	1941 A.F.E. 26	Spot Treat. Bit. Surf. Repair	22'			RT-6, 885 Gal./Mi. Grav. 55 C.Y./Mi. Maint. Dept.
M	1944 A.F.E. 5	Bit. Seal Coat				RT-10, 1700 Gal./Mi. Agg. 52 C.Y./Mi. Maint. Div.
M	1946 A.F.E. 4	Spot Treat. Bit. Surf. Repair Spot Grav Lifts	24'			RT-6, 19703 Gal. Agg. 980 C.Y.
C	1947 8211-03	Asphaltic Conc.	44'	2 1/4"		On Old Brick & Concr. Base
M	1948 A.F.E. 5	Bit. Seal Coat	42'			RT-10 & RC-3, 1533 Gal. Agg. 71 tons
C	1949 A.F.E. 19	Bit. Resurfacing Mixed Bit.	22'	1 1/2"		RT-6, 42740 Gal. Agg. 3885 tons



YEARS		TOTAL MILES	UNINCORPORATED		INCORPORATED		RURAL		URBAN	
FROM	TO		RDWY. MI.	BR. MI.	RDWY. MI.	BR. MI.	RDWY. MI.	BR. MI.	RDWY. MI.	BR. MI.
1934	1935	9.96	6.59	0.00	3.37	0.00	8.23	0.00	1.73	0.00
1936	1949	9.95	6.58	0.00	3.37	0.00	8.22	0.00	1.73	0.00
1950		9.10	7.98	0.00	2.02	0.00	8.72	0.00	0.38	0.00

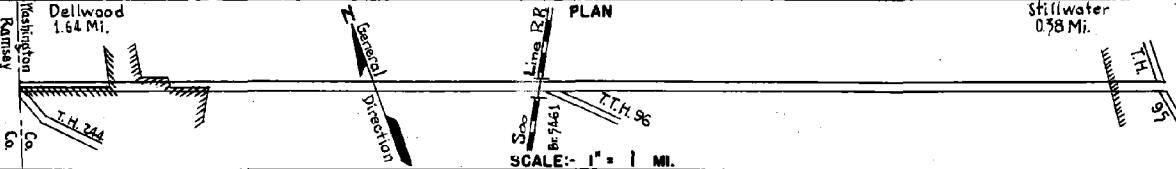
REMARKS: Layout is to scale as of 1936.
(1) This work not done under this project number but lies within the limits of this project.

PREPARED BY
HIGHWAY PLANNING SURVEY
IN COOPERATION WITH
U.S. PUBLIC ROADS ADMINISTRATION

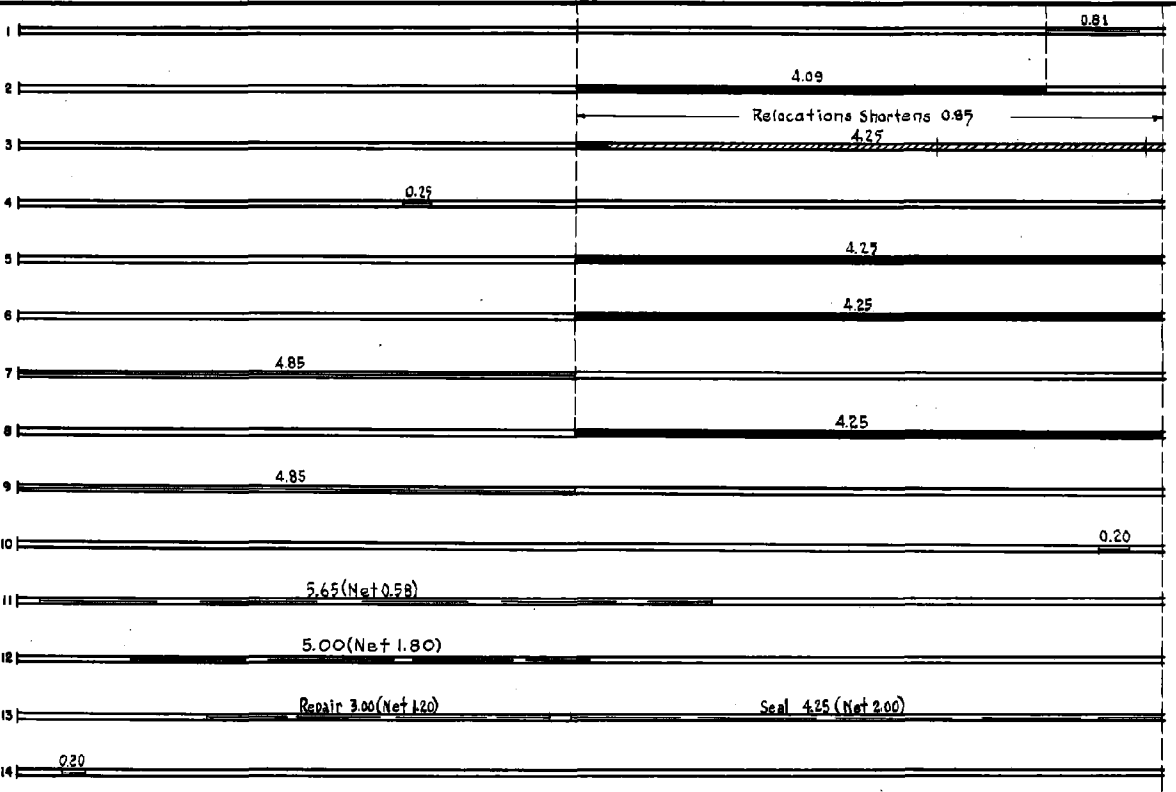
STATE OF MINNESOTA
DEPARTMENT OF HIGHWAYS
ROAD LIFE STUDIES
CONSTRUCTION PROJECT LOG RECORD

CONTROL SECTION 8211
TRUNK HIGHWAY 96
COUNTY Washington
DISTRICT 9A

LIMITS: Jct. T.H. 244 (W. Co. Line - N. Limits of Dellwood) to Jct. T.H. 96
in Stillwater



YEAR BUILT	PROJECT N ^o	DESCRIPTION			CODE N ^o
		TYPE	WIDTH	THICKNESS	
M 1970	A.F.E. 4	Bit Surface Repair			
C 1970	A.F.E. 16	Bit Resurfacing Mixed Bit	24'	1-1/2" added	
C 1970	8211-04	Grading Stab. Gravel Culverts	36' 24'	8" Select Material 2 1/2"	
M 1970	A.F.E. 28	Grade Lift Bit Surface Repair	24'		
C 1970	A.F.E. 32	Bit. Surfacing Mixed Bit. (Mixed Prime)	24'	2"	
C 1971 (2)	8211-06	Stab. Grav. Base Mixed Bit.	32' 26'	4-6" 1 1/2"	
M 1971	A.F.E. 4	Bit. Seal Coat	24'		
C 1973 (2)	8211-07 A.F.E. 833	Plant Mix Bit. Guard Rail	24'	2 1/2"	
M 1954	A.F.E. 605	Light Bit. Seal	22'		
M 1975	A.F.E. 821	Drainage Corr.			
M 1976	A.F.E. 604	Spot Treat Bit. Surf. Repair	24'		
M 1958	A.F.E. 604	Spot Treat Bit. Surf. Repair	24'		
M 1959 A.F.E. 605	A.F.E. 604	Spot Treat Bit. Surf. Repair Light Bit. Seal	24' 24'		
M 1960		Profile Correction with Plant Mix B.T.			



YEARS FROM	TOTAL TO	UNINCORPORATED		INCORPORATED		RURAL		URBAN	
		RDWY. MI.	BR. MI.	RDWY. MI.	BR. MI.	RDWY. MI.	BR. MI.	RDWY. MI.	BR. MI.

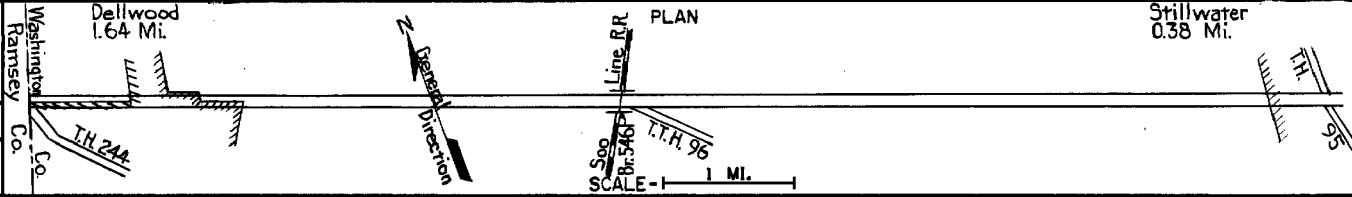
REMARKS: See Sheet No. 1
(2) Contract not final but work substantially complete

PREPARED BY
TRAFFIC AND PLANNING DIVISION
IN COOPERATION WITH
U.S. DEPARTMENT OF COMMERCE
BUREAU OF PUBLIC ROADS

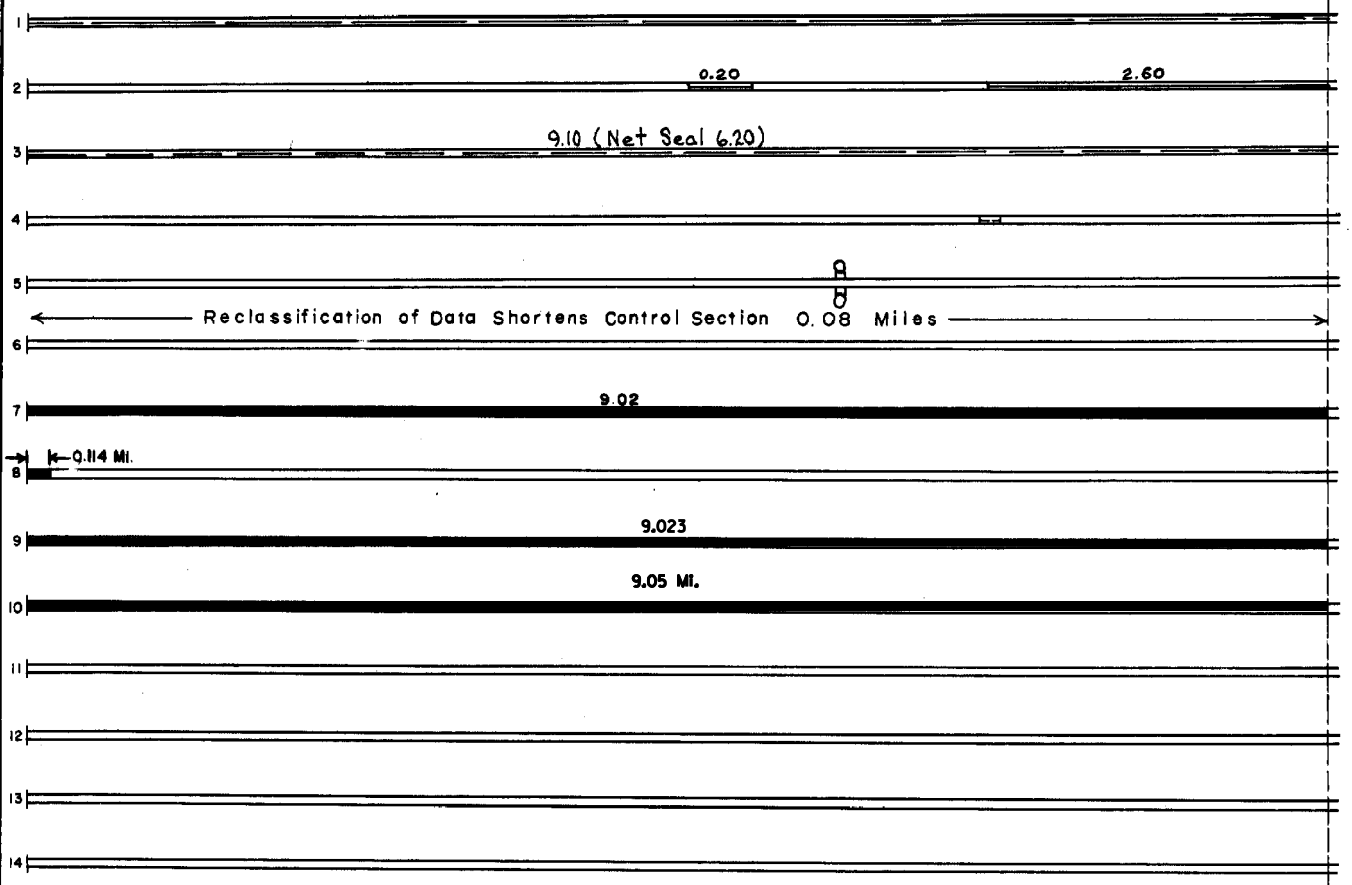
STATE OF MINNESOTA
DEPARTMENT OF HIGHWAYS
ROAD LIFE STUDIES
CONSTRUCTION PROJECT LOG RECORD

CONTROL SECTION 8211
TRUNK HIGHWAY 36
COUNTY Washington
MAINTENANCE DISTRICT Metro

LIMITS: Jct. T.H. 244 (W. Co. Line - W. Limits of Dellwood) - T.H. 95 in Stillwater
Ref. Pt. 010+00.514 - 019+00.576



YEAR BUILT	PROJECT NO.	DESCRIPTION			
		TYPE	WIDTH	THICKNESS	REMARKS
M 1961		Spot Treat Bit. Surf. Repair			MC-34299 Gal. Agg. 314 tons
M 1964	C	Light Bit. Seal	24'		RC-2, 7407 Gal. Agg. 312 C.Y.
M 1969	SF	Spot Bit. Seal Coat	22'		RC-800, 11838 Gal. Agg. 522 C.Y.
C 1970	8211-13	Turn Lanes & By-Pass Lanes			at Jct. C.S.A.H. 5
C 1970	-17 HH 5 0005(60)	TRAFFIC SIGNAL			AT C.S.A.H. 15
C 1977	8211-19	Pt. Mix Bit. Surf. Pt. Mix Bit. Shldr.	22'-24' 4'	1 1/2" 4"	
C 1977	8211-19	Pt. Mix Bit. Surf. Pt. Mix Bit. Shldr.	22'-24' 4'	1 1/2" 4"	
C 1983	8211-23 (1)	Interaction Rev. Bit. Surfacing Bit. Shoulders	22' 4'-5'	3" 3"	At Jct. T.H. 244 with Rt. Turn L.n.
C 1992	8211-26	Milling & Bit. Overlay	22-24'	1 1/2" 1"	Spec. 2341 Spec. 2361
2010	8211-32	Milling Bit. Overlay	24'	3" 4"	Spec. 2360



YEARS		TOTAL MILES	UNINCORPORATED		INCORPORATED		RURAL		URBAN	
FROM	TO		RDWY. MI.	BR. MI.	RDWY. MI.	BR. MI.	RDWY. MI.	BR. MI.	RDWY. MI.	BR. MI.

REMARKS: See Sheet No. 1

(1) This Project Overlaps into Ramsey Co. Appx. 0.033 Miles