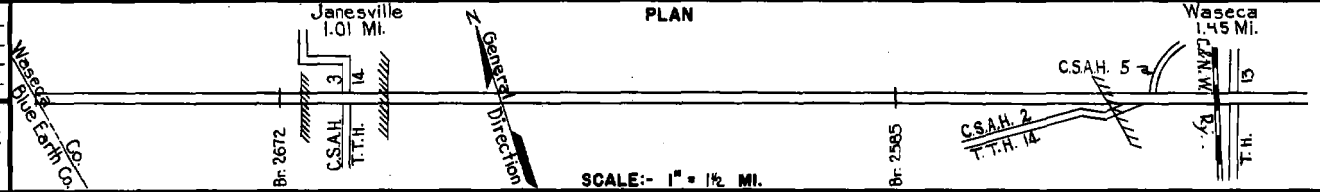


PREPARED BY
HIGHWAY PLANNING SURVEY
IN COOPERATION WITH
U.S. PUBLIC ROADS ADMINISTRATION

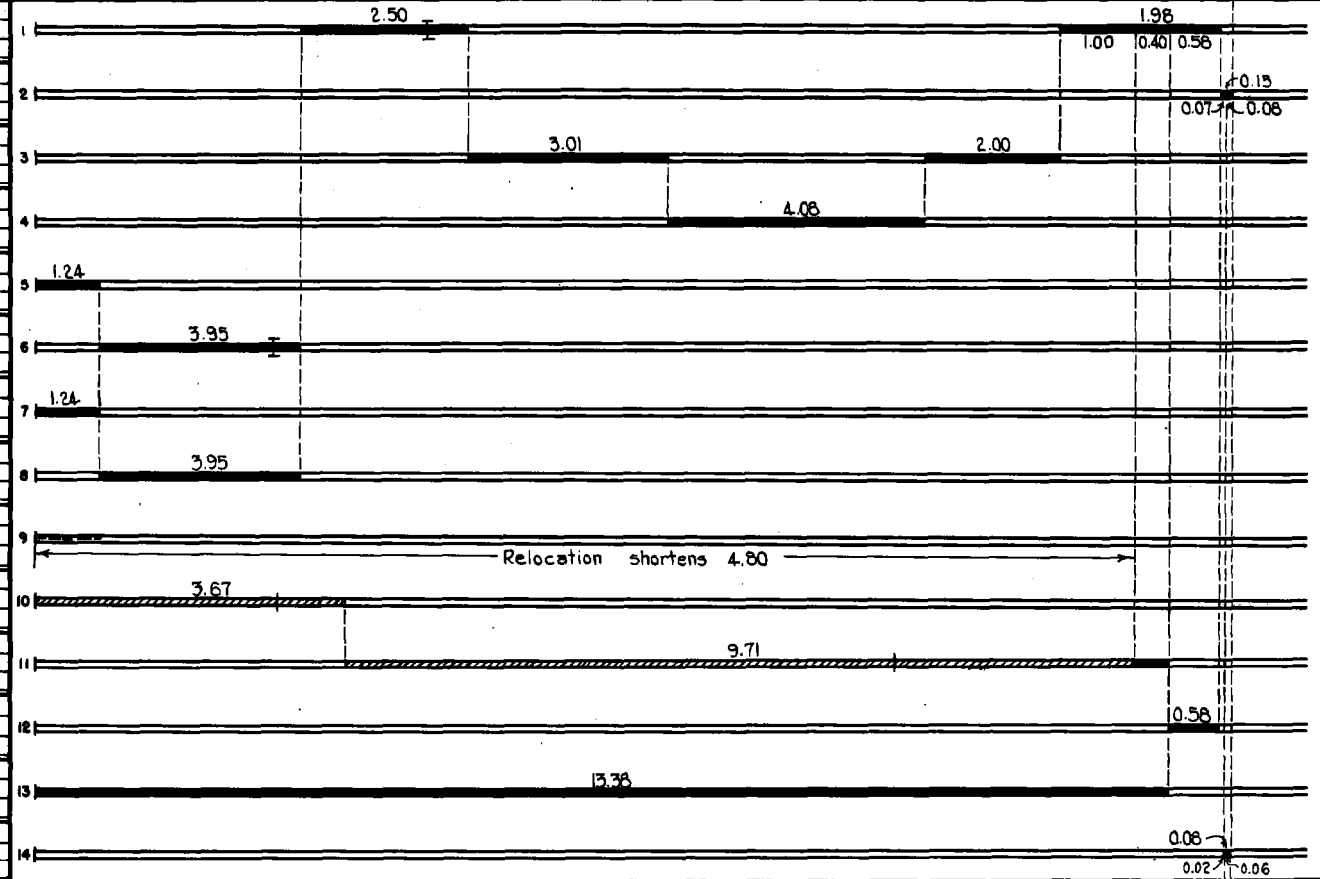
STATE OF MINNESOTA
DEPARTMENT OF HIGHWAYS
ROAD LIFE STUDIES
CONSTRUCTION PROJECT LOG RECORD

CONTROL SECTION 8103
TRUNK HIGHWAY 14
COUNTY Waseca
DISTRICT 7A

LIMITS: W. Co. Line - Jct. T.H. 13 in Waseca.



YEAR BUILT	PROJECT N ^o	DESCRIPTION			CODE N ^o
		TYPE	WIDTH	THICK-NESS	
		Gravel	24'	2"	1
		Br. 942	24'	12' slab.	
		Brick & Concrete	NW		2
				No Record of Constr. Concrete Base.	
1919	14-7-6	Gravel	24'	2 1/2"	3
				1200 C.Y./Mile.	
1920	14-7-8	Gravel	24'	2 1/2"	4
				1200 C.Y./Mile.	
1922	14-7-29	Grading	30'		5
1923	14-7-30	Grading	30'		6
		Br. 3756	20'	30' C.D.G.	
1924	14-7-29	Gravel	24'	3 1/2"	7
				1600 C.Y./Mile.	
1924	14-7-30	Gravel	24'	3 1/2"	8
				1600 C.Y./Mile.	
1926	14-7-29	Guard Rail			9
		Grading	40'		
1931	14-7-30	Gravel	30'	1 1/2"	10
		Br. 2672		800 C.Y./Mile. W108 T.	
1931	14-7-46	Gravel	30'	1 1/2"	11
		Br. 2585		800 C.Y./Mile. W104D.	
1931	14-7-15	Concrete	36'		12
1933	14-7-30	Concrete	20'	9-7-9	13
	14-7-46				
1935	14-7-48	Concrete	20'		14
				20' Center paved. 14' Rt. & Lt. old Brick left in place.	



YEARS		TOTAL MILES	UNINCORPORATED		INCORPORATED		RURAL		URBAN	
FROM	TO		RDWY. MI.	BR. MI.	RDWY. MI.	BR. MI.	RDWY. MI.	BR. MI.	RDWY. MI.	BR. MI.
1923	1930	18.91	16.67	0.01	2.23	0.00	16.67	0.01	2.23	0.00
1931	1970	14.11	12.37	0.00	1.74	0.00	12.37	0.00	1.74	0.00
1971		14.11	11.65	0.00	2.46	0.00	11.65	0.00	2.46	0.00

REMARKS: Layout is to scale as of 1931.

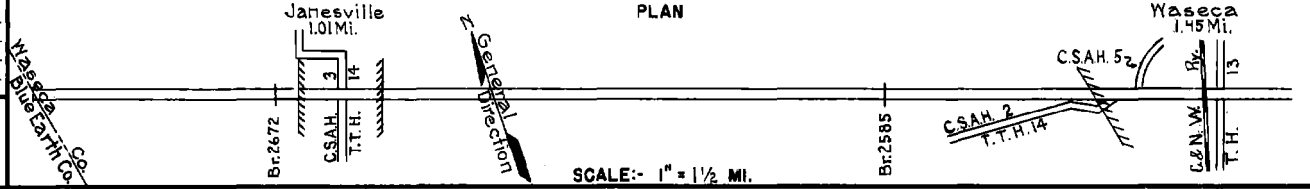
(1) A 9' strip of bit. surf. was placed on each side of existing 20' concrete pavement work done by Waseca Co.

PREPARED BY
HIGHWAY PLANNING SURVEY
IN COOPERATION WITH
U.S. PUBLIC ROADS ADMINISTRATION

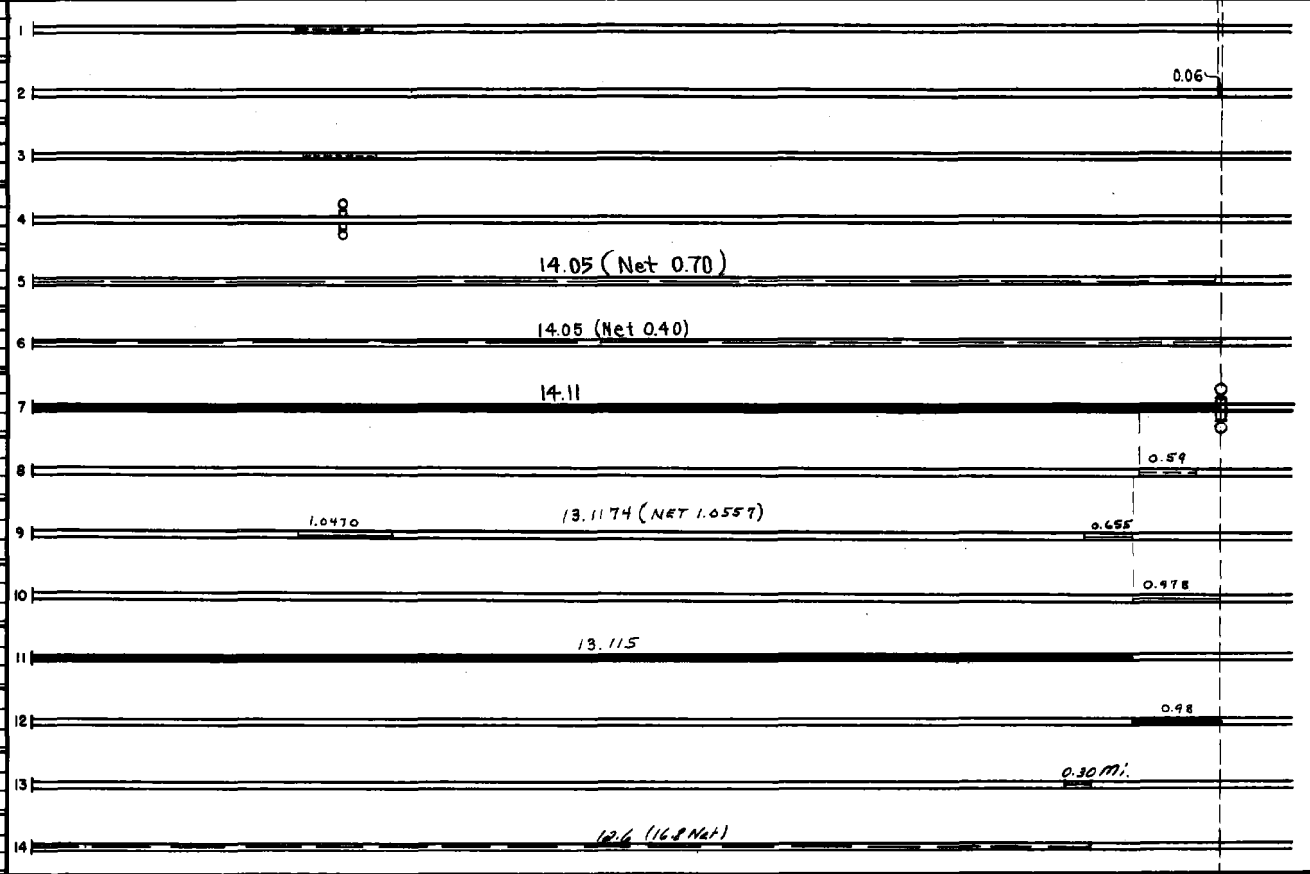
STATE OF MINNESOTA
DEPARTMENT OF HIGHWAYS
ROAD LIFE STUDIES
CONSTRUCTION PROJECT LOG RECORD

CONTROL SECTION 8103
TRUNK HIGHWAY 14
COUNTY Waseca
DISTRICT 7A

LIMITS: W. Co. Line - Jct. T.H. 13 in Waseca
Ref. Pt. 143+00.744 - 157+00.822



YEAR BUILT	PROJECT N°	DESCRIPTION			CODE N°
		TYPE	WIDTH	THICKNESS	
1938	1938 A.F.E. 42	Improved Shoulders			
	1939 A.F.F. 50	Mixed Bitum.	18'	1 1/2"	(1)
C					
1952	8103-03	Plant Mix Bit.	48'	3"	On old concr. & brick
C					
1954	8103-05	Widening			15' Rt. & Lt.
	(2)	Gravel Base	30'	12"	
		Plant Mix Bit.	30'	3"	
C					
1954	8103-07	Traffic Signals			
M		Spot Repair			Plant Mix 357 Tons
1963	SF	Bit. Patching of Conc. Pav't.	20'		MC-3 Tack 325 Gal.
M		Spot Repair			Plant Mix 304 Tons
1964	SF	Bit. Patching of Concrete Pav't	22'		MC-3 Tack, 80 Gals.
C					
1967	8103-10	Plant Mix Bit	24'	2 1/2"	over P.C. Conc. imp.
	8103-11	Traffic Signals			
C					
1971	8103-15	Rt. Turn LA., Pass. Lane			
C					
1978	8103-22	ASPH. CONC. OVERLAY	22'-24'	3/4"	1.0470
C					
1978	8103-23	ASPH. CONCRETE OVERLAY	22'-24'	3/4"	13.1174 (NET 1.0557)
C					
1976	8103-19	BIT. SURFACING & TURN LANES	20'	2 1/2"	13.115
C					
1976	8103-20	BIT. SURFACING & TURN LANES	20'	2 1/2"	0.98
M					
1980	SF	Bit. Shldr. Wedge	2'	2"	10 Ton pl. Mix Bit. P.C. Rep. (W&R)
M					
1981	SF	Bit. Seal Coat			Contract No. 9888



YEARS FROM	TOTAL TO	UNINCORPORATED		INCORPORATED		RURAL		URBAN	
		RDWY. MI.	BR. MI.	RDWY. MI.	BR. MI.	RDWY. MI.	BR. MI.	RDWY. MI.	BR. MI.

REMARKS: See Sheet No. 1
(2) Contract not final but work substantially complete.

