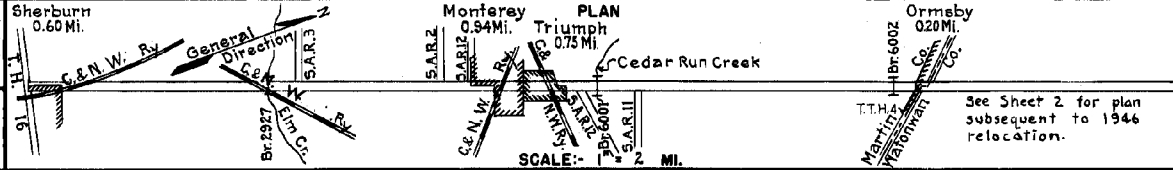


PREPARED BY
HIGHWAY PLANNING SURVEY
IN COOPERATION WITH
U.S. PUBLIC ROADS ADMINISTRATION

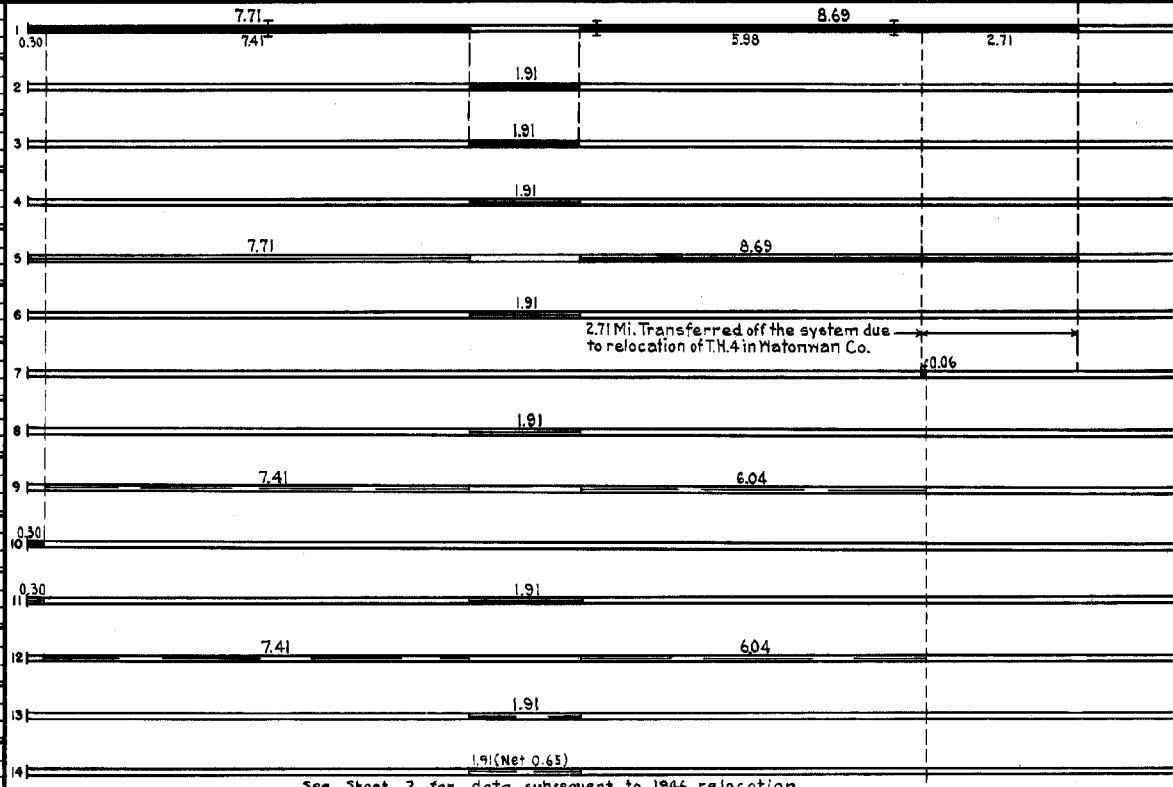
STATE OF MINNESOTA
DEPARTMENT OF HIGHWAYS
ROAD LIFE STUDIES
CONSTRUCTION PROJECT LOG RECORD

CONTROL SECTION 4602
TRUNK HIGHWAY 4
COUNTY Martin
DISTRICT 7B

LIMITS: E. Jct. T.H. 16 in Sherburn - N. Co. Line in Ormsby



YEAR BUILT	PROJECT N ^o	DESCRIPTION			CODE N ^o
		TYPE	WIDTH	THICKNESS	
		Gravel (1) Br. 2927 6001 & 6002	18'	1"	No Record of Constr. Added in 1934.
		Gravel	30'	1"	No Record of Constr. Added in 1934.
1934		Oil Tr. Gravel	18'	1 1/2"	14358 Gal./Mile, Maint. Dept.
M 1940	A.F.E. 26	Bit. Retreat.			SG4-8257 Gal./Mi. Grav. 322 C.Y./Mi. Maint. Dept.
M 1940	A.F.E. 10	Regravelling			313 C.Y./Mile, Maint. Dept.
M 1941	A.F.E. 7	Bit. Retreat.	230		SG4-4085 Gal./Mi. Grav. 259 C.Y./Mi. Maint. Dept.
C		Gravel			Village St. taken over in 1941 due to relocation of C.S. 8301.
M 1942	A.F.E. 4	Bit. Retreat.	24'		MG325G39574G/Mi. Grav. 557 C.Y./Mi. Maint. Dept.
M 1943	A.F.E. 6	Grav. Resurface (Spots)			233 C.Y./Mi. Maint. Dept.
C		Mixed Bit.	24'	1 1/2"	See letter O'Meara to Motl. 2-26-45
M 1944	A.F.E. 4	Bit. Surf. Repair	2430		MG34382 Gal./Mi. Grav. 238 C.Y./Mi. Maint. Div.
M 1945	A.F.E. 6	Grav. Resurfacing (Spots)			45 C.Y./Mi. Maint. Div.
M 1945	A.F.E. 4	Spot Treat. Bit. Surf. Repair			MG35215 Gal./Mi. Grav. 700 C.Y./Mi. Maint. Div.
M 1946	A.F.E. 4	Spot Treat. Bit. Surf. Repair	24'		SC3, 7528 Gal. Agg. 303 C.Y.



YEARS FROM	TO	TOTAL MILES	UNINCORPORATED		INCORPORATED		RURAL		URBAN		
			RDWY. MI.	BR. MI.	RDWY. MI.	BR. MI.	RDWY. MI.	BR. MI.	RDWY. MI.	BR. MI.	
1934	1940	15.31	15.61	0.02	2.68	0.00	17.65	0.02	0.60	0.00	
1941	1946	15.66	13.15	0.02	2.49	0.00	15.04	0.02	0.60	0.00	
See Sheet No. 2											

REMARKS: Layout is to scale as of 1934. Plan revised for 1941 relocation.
(1) Br. 2927 built in 1909

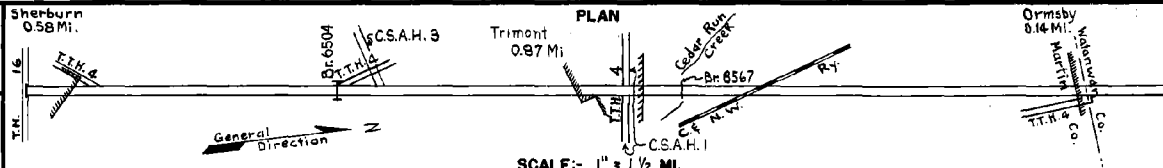
PREPARED BY
HIGHWAY PLANNING SURVEY
IN COOPERATION WITH
U.S. PUBLIC ROADS ADMINISTRATION

STATE OF MINNESOTA
DEPARTMENT OF HIGHWAYS
ROAD LIFE STUDIES
CONSTRUCTION PROJECT LOG RECORD

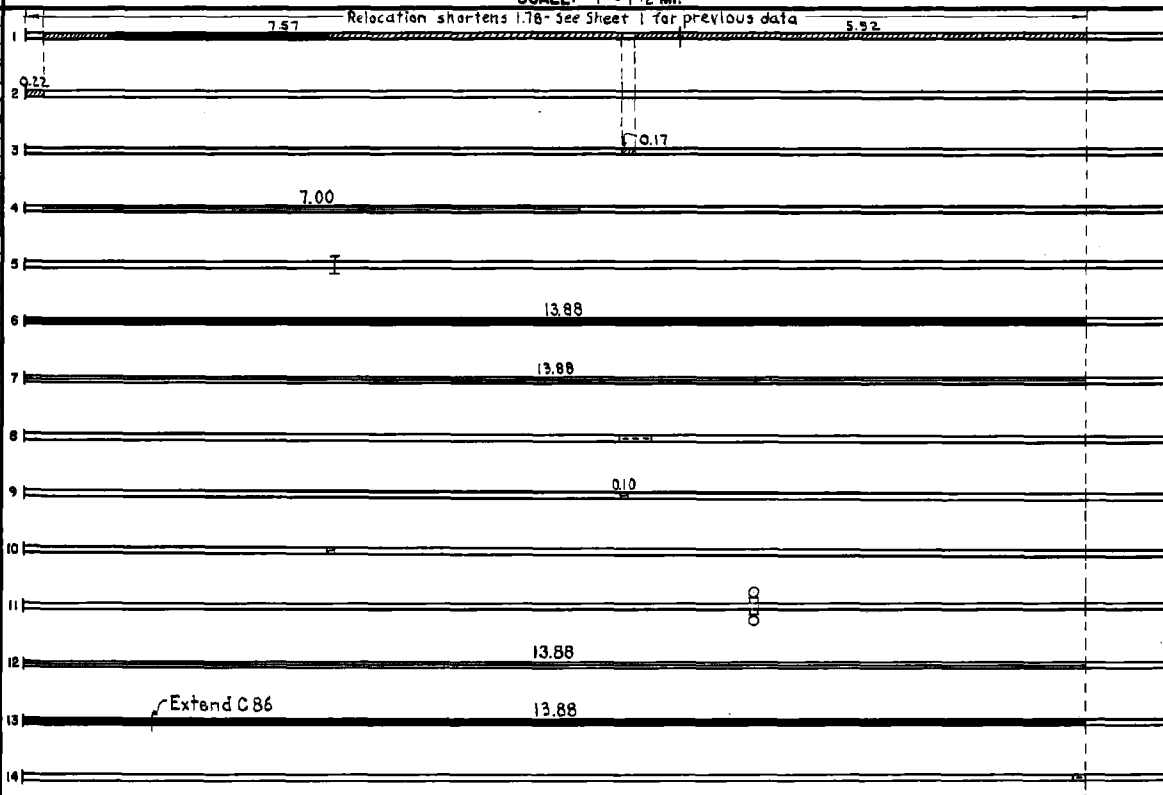
CONTROL SECTION 4602
TRUNK HIGHWAY 4
COUNTY Martin
DISTRICT 7B

LIMITS: Uct. T.H. 16 in Sherburn - N. Co. Line in Ormsby.

Sherburn
0.58 Mi.



YEAR BUILT	PROJECT N ^o	DESCRIPTION	THICKNESS		REMARKS	CODE N ^o
			WIDTH			
1946	4602-02	Grading	36.79			
	4602-04	Stab. Gravel	36.70	1 1/2"	C 1260 = 39'	
		Mixed Bit	80'		No Record of Const. Taken over from village in 1946.	
		Gravel	26'		No Record of Const. Taken over from village in 1946.	
1947	A.F.E. 6	Grav. Resurfacing			1610 C.Y.	
1948	4602-05	Br. 6504	30'		110' C.D.G.	
1949	4602-03	Gravel Base	30.68	9"		
1949	4602-06	Plant Mix Bit	24.63	1 1/2"		
1951	A.F.E. 4	Bit. Fog Seal	24'		RS-1, 26041 Gal. Agg. 618 C.Y.	
1951	4602-07	Storm Sewer				
1952	A.F.E. 17	Grade Correction Restore Bit. Surf.	30'		236 Tons Hot Plant Mix	
1953	A.F.E. 817	Place Stone			At Bridge 6904	
1954		Rip Rap				
1954	4602-09	Grade X-ing Signals				
1955	A.F.E. 605	Light Bit. Seal	24'		RS-2, 24884 Gal. Agg. 665 C.Y.	
1956	4602-10	Shoulder Grading Salv. Agg. Base * Concrete *	23.38	6" min. 22' 8.379'	0.59 Mi. of 56'83 Bit. Surf. on Grav. Base Remains in p. except center 22'	
1957	4602-11	Widening Gravel Base Concrete	Var. 22'	8" 9"	Frontage Road (2) 11' Rt. & Lt.	



YEARS FROM	TOTAL MILES	UNINCORPORATED		INCORPORATED		RURAL		URBAN	
		RDWY. MI.	BR. MI.	RDWY. MI.	BR. MI.	RDWY. MI.	BR. MI.	RDWY. MI.	BR. MI.
1946	13.88	12.27	0.02	1.59	0.00	13.28	0.02	0.58	0.00

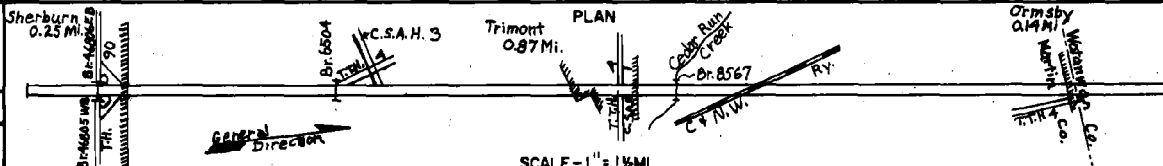
REMARKS: Layout is to scale as of 1946.
 (1) Contract not final but work substantially complete in 1946.
 (2) 1 1/2" x 24" Mixed Bit. on Bit. Stab. Base from Mt. Pt. 13.71 - 13.88.

PREPARED BY
 TRANSPORTATION & TRANSIT PLANNING & PROGRAMMING DIVISION
 IN COOPERATION WITH
 U.S. DEPARTMENT OF TRANSPORTATION - FEDERAL HIGHWAY ADMINISTRATION

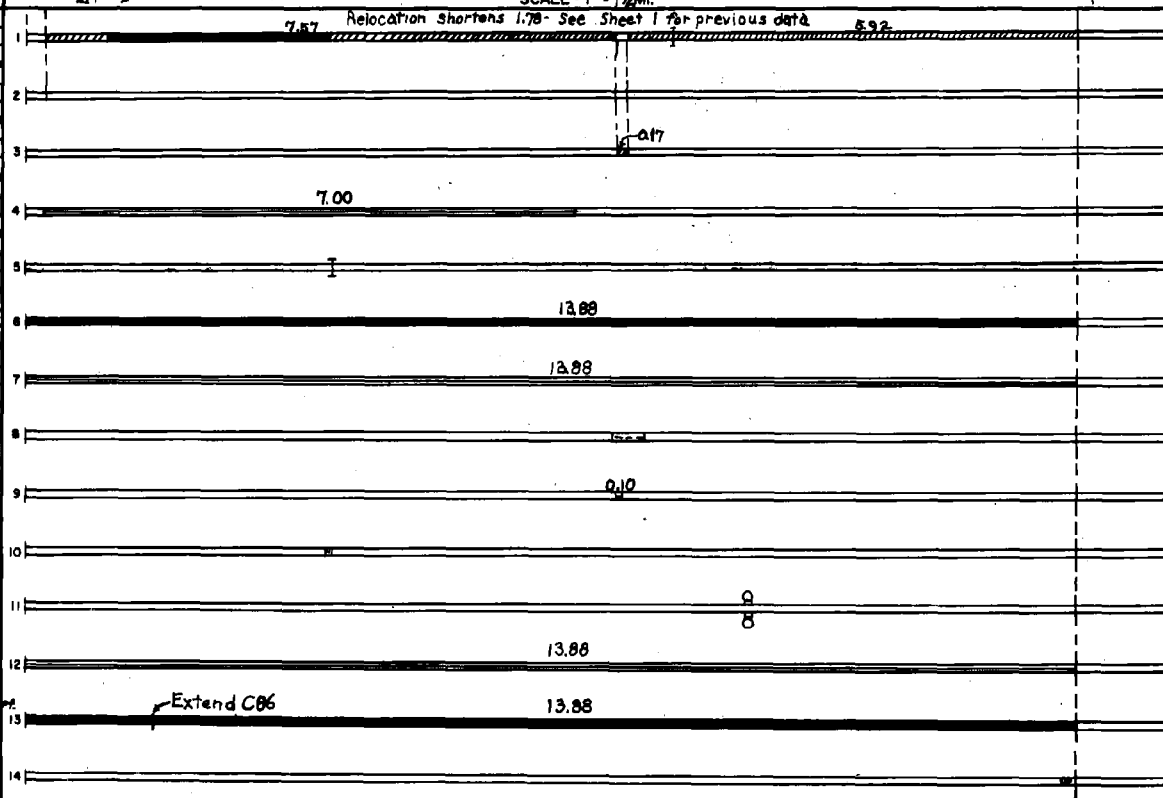
STATE OF MINNESOTA
 DEPARTMENT OF HIGHWAYS
 ROAD LIFE STUDIES
 CONSTRUCTION PROJECT LOG RECORD

CONTROL SECTION 4602
 TRUNK HIGHWAY 4
 COUNTY Martin
 DISTRICT 7B

LIMITS: Jct. 90 in Sherburne ~ N.C. Line in Ormsby



YEAR BUILT	PROJECT NO.	DESCRIPTION				REMARKS
		TYPE	WIDTH	THICKNESS		
C		Grading	36'-70'			
1946	4602-02	Stab. Gravel	36'-70'	1 1/2"		
(1)	4602-04	Br. 8567			C126D 233'	
		Mixed Bit.	80'		No Record of Const. Taken over from village in 1946	
		Gravel	26'		No Record of Const. Taken over from village in 1946	
M		Grav. Resurfacing			1810 C.Y.	
1947	A.F.E. 6					
C		Br. 6504	30'		110' C.D.B.	
1948	-05					
C	-03	Gravel Base	30 1/2'	9"		
1949	-06	Plant Mix Bit.	24'-24'	1 1/2"		
M		Bit. Fog Seal	2 1/4'		RS-1, 26041 Gal. Agg. 618 C.Y.	
1951	A.F.E. 4					
C		Storm Sewer				
1951	-07					
M		Grade Correction				
1952	A.F.E. 17	Restore Bit. Surf.	30'		236 Tons Hot Pt. Mix	
C		Place Stone			At Bridge 6504	
1953	A.F.E. 817	Rip Rap				
1954						
C		Grade X-ing Signals				
1954	-09					
M		Light Bit. Seal	2 1/4'		RS-2, 24884 Gal. Agg. 885 C.Y.	
1956	A.F.E. 608					
C		Shoulder Grading			0.59 Mi. of 5 1/2' x 3' on Bay Base Remains in, except center 22'	
1956	4602-10	Salv. Agg. Base * Concrete *	22' 6" 22' 6"	6" 6"		
C		Widening			Frontage Road (2)	
1957	-11	Gravel Base Concrete	Var. 22'	9" 9"	11' Rt. & Lt.	



YEARS FROM	TOTAL MILES TO	UNINCORPORATED		INCORPORATED		RURAL		URBAN	
		RDWY. MI.	BR. MI.	RDWY. MI.	BR. MI.	RDWY. MI.	BR. MI.	RDWY. MI.	BR. MI.
1946	1973	12.27	0.02	1.59		13.28	0.02	0.58	
1974	1975	11.67	0.02	2.19		11.67	0.02	2.19	
1975		12.78	0.02	0.25		12.72	0.02	0.25	

REMARKS: Layout is to scale as of 1946
 (1) Contract not final but work substantially complete in 1946
 (2) 1 1/2" x 24' Mixed Bit. on Bit. Stab. Base from Mi. Pt. 13.71 - 13.88

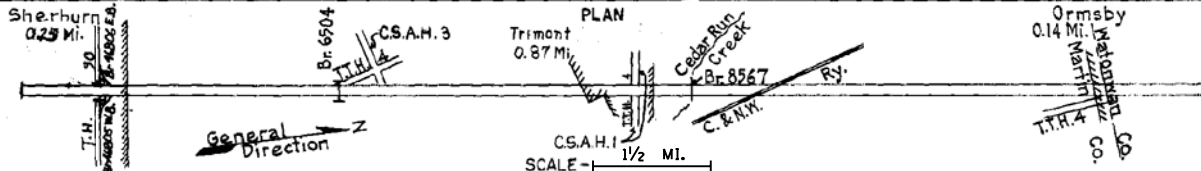
2-76

PREPARED BY
TRAFFIC AND PLANNING DIVISION
IN COOPERATION WITH
U.S. DEPARTMENT OF COMMERCE
BUREAU OF PUBLIC ROADS

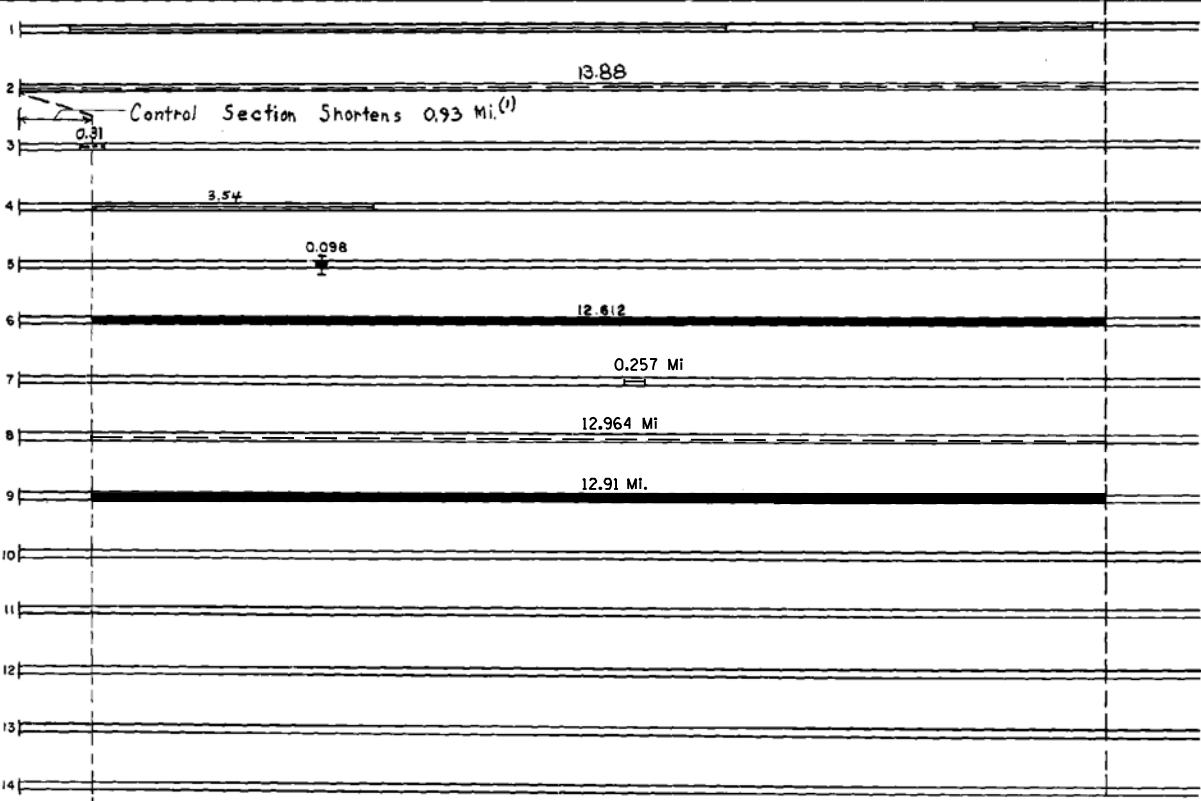
STATE OF MINNESOTA
DEPARTMENT OF HIGHWAYS
ROAD LIFE STUDIES
CONSTRUCTION PROJECT LOG RECORD

CONTROL SECTION 4602
TRUNK HIGHWAY 4
COUNTY Martin
DISTRICT 7B

LIMITS Jct. T.H. 90 in Sherburn - N. Co. Line in Ormsby
Ref. Pt. 013+00.442 - 026+00.406



YEAR BUILT	PROJECT NO	DESCRIPTION			
		TYPE	WIDTH	THICKNESS	REMARKS
C 1957 1958	A.F.E. 606	Regravel Shoulders			6385 Tons
M 1972	SF	Joint Seal			33850 lbs. Sealant
C 1973	-24 1090-2(5) 081	SHLDR. WIDENING	11'		
M 1977	SF	Restore Ass. Shoulders			Aggregate 4617 Cu.Yd.
C 1983	4602-16 F083-11341	Approach Grading Surfacing B Br. No. 6304	24' 6 1/2'	8" 2"	Spec 2301 Spec 2331 Shoulders Elim Cr. Br. No. 6504
C 1985	4602-19	Bit. Surfacing Ass. Shoulders Turn Lanes	26' 8' 12'	4 1/2" Var. Var.	
M 1986	SF	Bit. Sealing			
M 2004	4602-23	Bit Joint Repair MC			
S 2004	4602-22	Milling Bit. Bit. Surfacing	26' 26'	2" 2"	Spec. 2360



YEARS		TOTAL MILES	UNINCORPORATED		INCORPORATED		RURAL		URBAN	
FROM	TO		RDWY. MI.	BR. MI.	RDWY. MI.	BR. MI.	RDWY. MI.	BR. MI.	RDWY. MI.	BR. MI.

REMARKS: See Sheet No 2
(1) 0.93 Miles Transferred to Control Section 4601