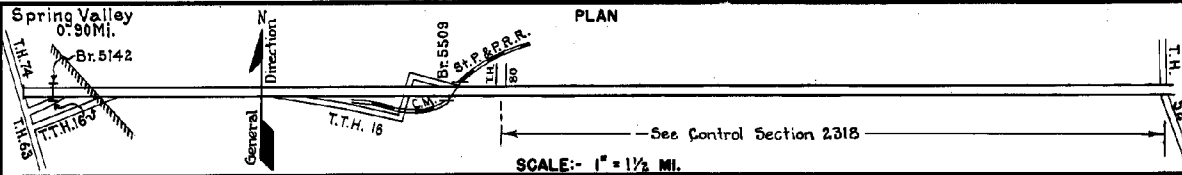


PREPARED BY  
HIGHWAY PLANNING SURVEY  
IN COOPERATION WITH  
U. S. PUBLIC ROADS ADMINISTRATION

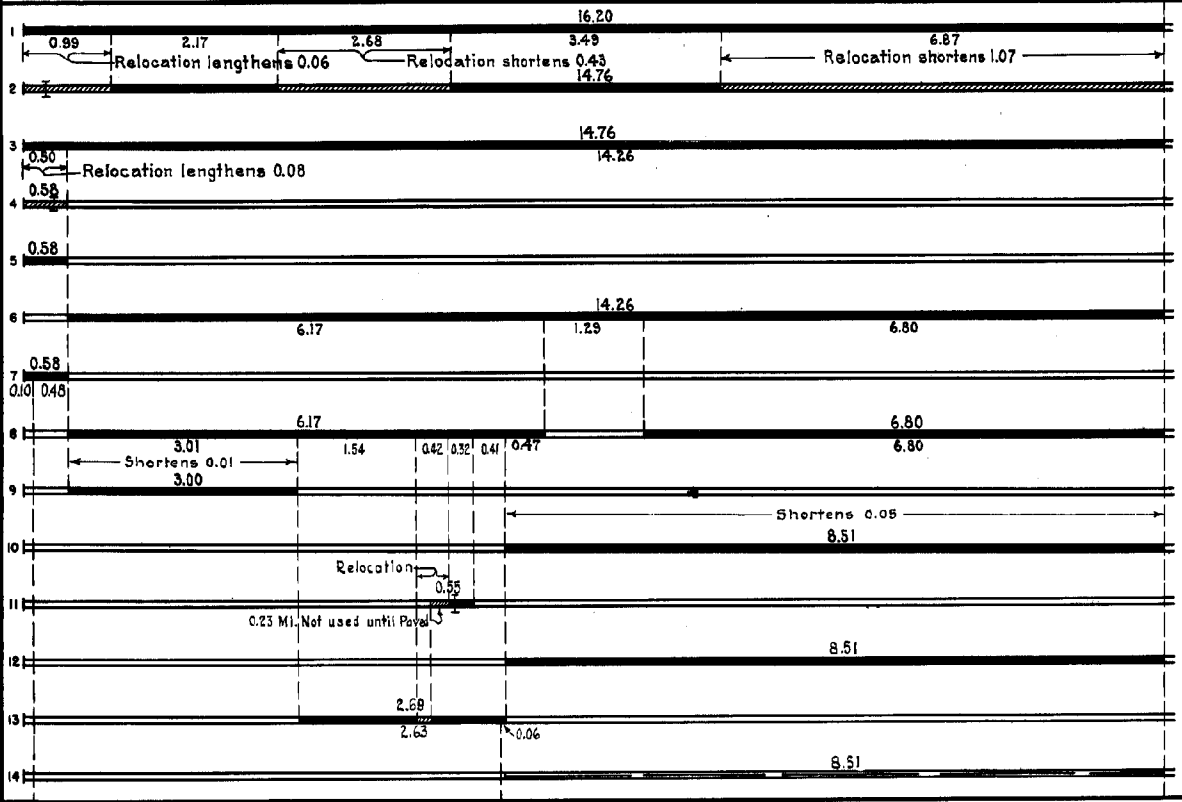
STATE OF MINNESOTA  
DEPARTMENT OF HIGHWAYS  
ROAD LIFE STUDIES  
CONSTRUCTION PROJECT LOG RECORD

CONTROL SECTION 2302  
TRUNK HIGHWAY 16  
COUNTY Fillmore  
DISTRICT 6A

LIMITS: Jct. T.H. 74 in Spring Valley-- Jct. T.H. 80. So. of Wykoff



YEAR BUILT	PROJECT N <sup>o</sup>	DESCRIPTION			CODE N <sup>o</sup>
		TYPE	WIDTH	THICKNESS	
		Earth			No Record of Constr.
1925	16-9-39A&B	Grading Br. 4253	30'	28"	16' B.S.
1926	16-9-39A&B	Gravel	24'	2 1/2"	1200 C.Y./Mile.
1931	16-9-30-4	Grading Br. 5142	40'	27"	45' B.S.
1932	16-9-30-4	Gravel	30'	1 1/2"	800 C.Y./Mile.
	(1)				
1932	16-9-39A&B	Oil Tr. Gravel	24'	1"	15186 Gal./Mile. Maint. Dept.
1933	16-9-30-4	Concrete	20'	9-7-9	
					No Construction. Bit Surface Reverted to Grav.
1935	16-9-39A&B	Gravel	24'	2"	
1936	16-9-39C	Concrete	20'	9-7-9	
		Grading Crushed Stone (Water bound)	32'	29"	6"
1937	16-9-39-D	Grading Br. 5509	40'	30"	D.P.G.-U.P.
1937	A.F.E. 19	Mixed Bit.	26'	1"	Maint. Dept.
		Grading Concrete Seeding	32'	20"	9-7-9
1938	2302-01 16-9-39-F				
M		Spot Treat.			Rd. Oil 452 Gal./Mi.
1942	A.F.E. 12	Bit Surf. Repair	20'		Agg. 20 C.Y./Mi. Maint. Dept.



YEARS		TOTAL MILES	UNINCORPORATED		INCORPORATED		RURAL		URBAN	
FROM	TO		RDWY. MI.	BR. MI.	RDWY. MI.	BR. MI.	RDWY. MI.	BR. MI.	RDWY. MI.	BR. MI.
1921	1924	16.20	14.11	0.00	2.09	0.00	15.40	0.00	0.80	0.00
1925	1930	4.76	2.36	0.00	2.40	0.00	13.94	0.00	0.82	0.00
1931	1935	4.84	2.36	0.00	2.47	0.01	13.94	0.00	0.89	0.01
1936	1946	4.78	2.35	0.00	2.42	0.01	13.85	0.00	0.89	0.01
1947		6.21	5.31	0.00	0.89	0.01	5.31	0.00	0.89	0.01

REMARKS: Layout is to scale as of 1937

(1) This work not done under this project number but lies within the limits of this project

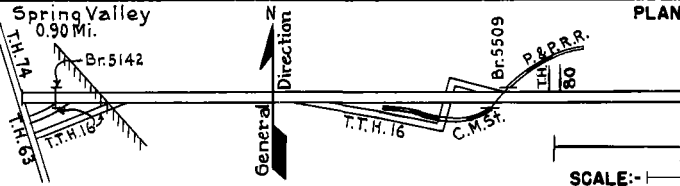
PREPARED BY  
HIGHWAY PLANNING SURVEY  
IN COOPERATION WITH  
U.S. PUBLIC ROADS ADMINISTRATION

STATE OF MINNESOTA  
DEPARTMENT OF HIGHWAYS  
ROAD LIFE STUDIES  
CONSTRUCTION PROJECT LOG RECORD

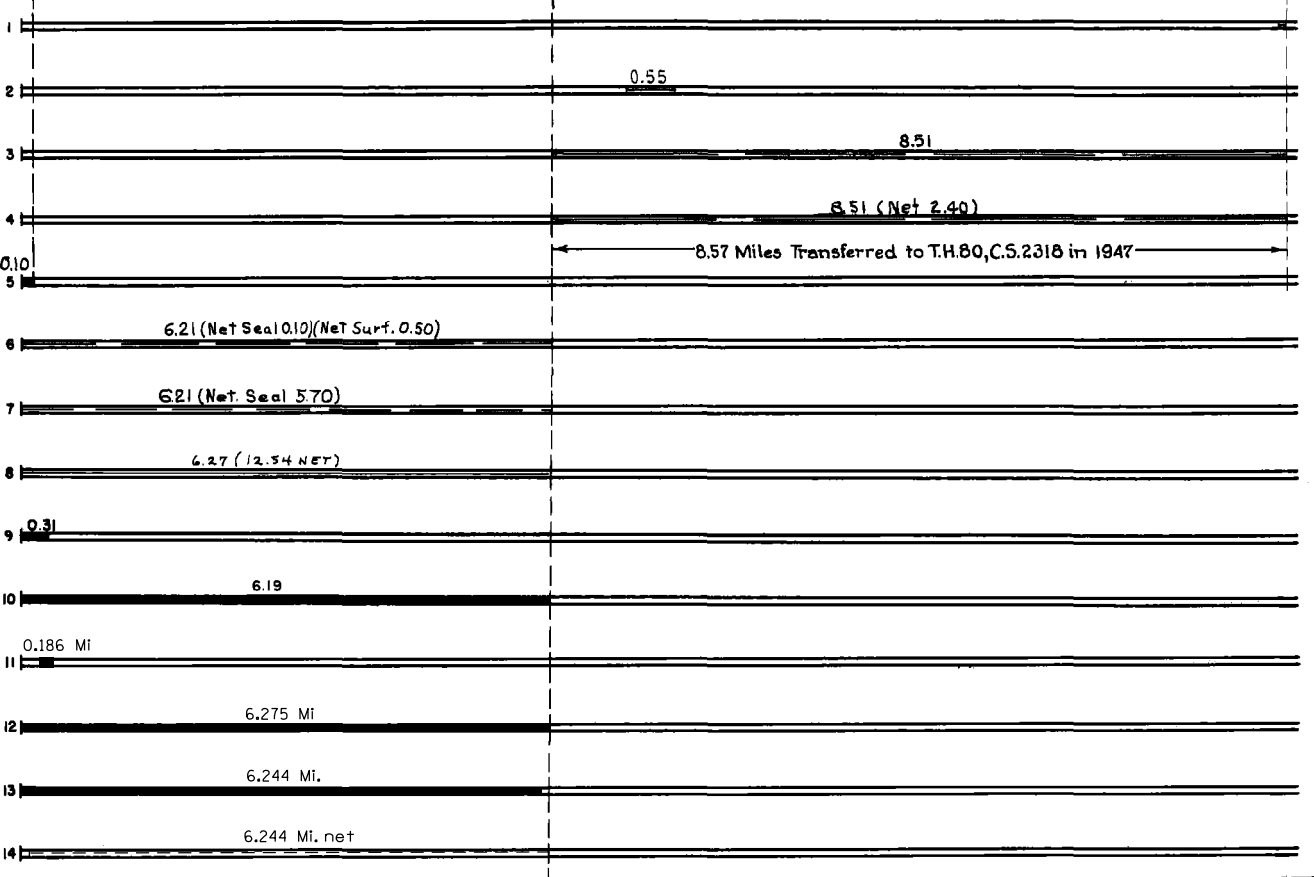
CONTROL SECTION 2302  
TRUNK HIGHWAY 16  
COUNTY Fillmore  
DISTRICT 6A

LIMITS: Jct. T.H. 74 in Spring Valley - Jct. T.H. 80 So. of Wykoff

Ref. Pt. 215+00.436 - 221+00.833



YEAR BUILT	PROJECT N°	DESCRIPTION			CODE N°
		TYPE	WIDTH	THICKNESS	
C	1943 2302-02	Landscape & Curb			N.Y.A.
M	1943 A.F.E. 4	Bit. Surf. Repair	40'		RT-5 & 6 127076 / Mi. Agg. 513 C.Y. / Mi. Maint. Dept.
M	1945 A.F.E. 23 A.F.E. 5	Spot Treat. Bit. Surf. Repair			Bit. 3159 Gal. / Mi. Agg. 238 C.Y. / Mi. Maint. Div.
M	1946 A.F.E. 4	Spot Treat. Bit. Surf. Repair	24'		MC3 18710 Gal. Agg. 927 C.Y.
C	1963 2302-04	Grading, Sub-base Crushed Rock Base Plant mix bit	*12" 6" 44'		RT & top p.c. Conc. in place Over p.c. conc. in p.
M	1966 C SF	Light Bit. Seal Bit. Wearing Course	50' 20'	3/4"	CRS-1 Bit. 336 Gal. FA-1 Agg. 12 C.Y. Bit. Surf. 555 Ton
M	1971 SF	Joint Seal			
M	1975 SF	Re Rock Shoulders	4'	2 1/2"	Crushed Limestone 1636 Ton
M	1980 SF	Bit. Overlay	22'	1 1/2"	Tack .035 1329.67 Ton (Portion CS 2301)
C	1983 2302-10 F 009-3(43)	Widening Bit. Surfacing Turn Lanes	4' 28' 12'	9 1/8" 3" 12"	4' Lt. B. Rt. Sp. 2331
C	1992 2302-13	Grading Bit. Surfacing	28'	3" 8"	Spec. 2341 Spec. 2331
C	1995 2302-16	Bit. Overlay Gravel Shoulder	28' 6'	2" 2"	
C	2013 2302-17	Milling Bit. Overlay	28'	1.5" 3"	Spec. 2360
M	2019 8826-193	Bituminous Chip Seal			



YEARS FROM	TOTAL MILES TO	UNINCORPORATED		INCORPORATED		RURAL		URBAN	
		RDWY. MI.	BR. MI.	RDWY. MI.	BR. MI.	RDWY. MI.	BR. MI.	RDWY. MI.	BR. MI.

REMARKS: See Sheet No 1