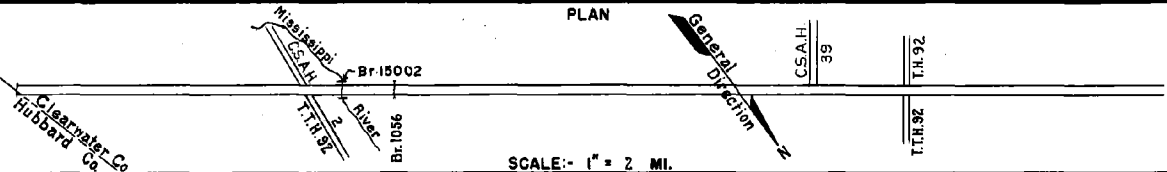


PREPARED BY  
HIGHWAY PLANNING SURVEY  
IN COOPERATION WITH  
U.S. PUBLIC ROADS ADMINISTRATION

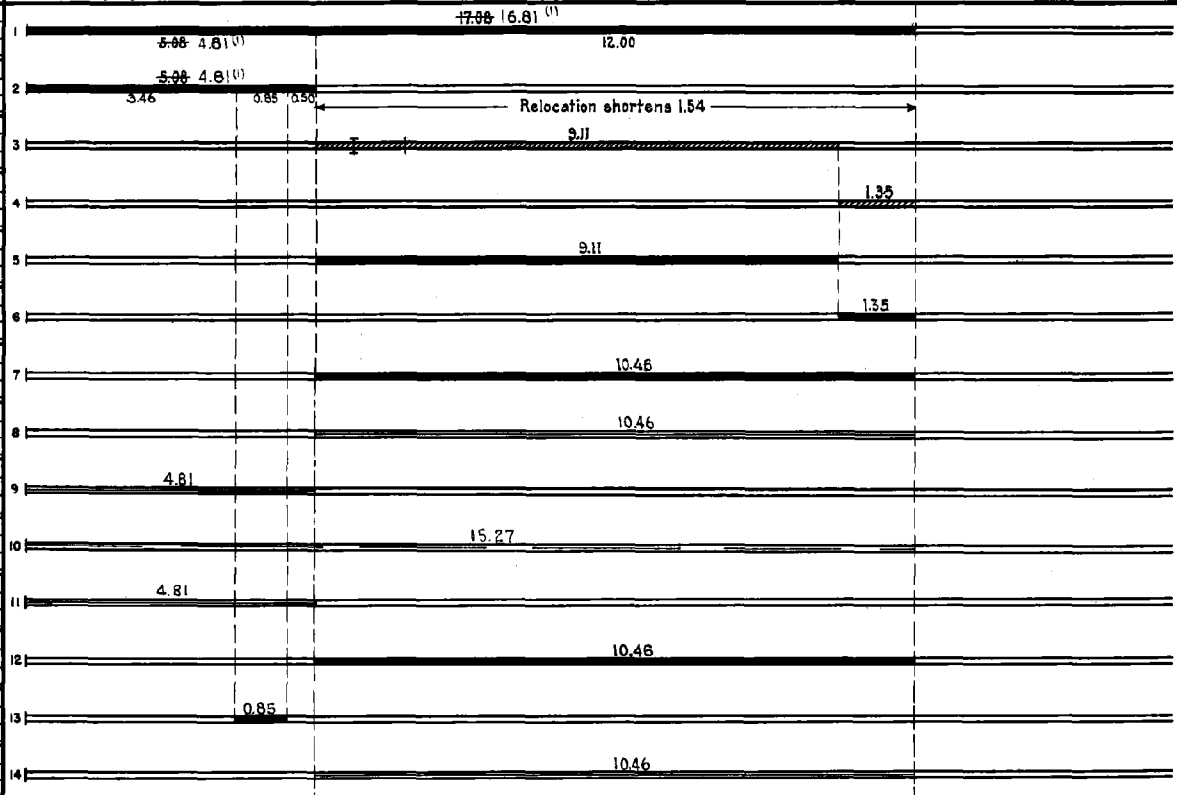
STATE OF MINNESOTA  
DEPARTMENT OF HIGHWAYS  
ROAD LIFE STUDIES  
CONSTRUCTION PROJECT LOG RECORD

CONTROL SECTION 1505  
TRUNK HIGHWAY 200  
COUNTY Clearwater  
DISTRICT 2A

LIMITS: East Co. Line-Jct. T.H.92



YEAR BUILT	PROJECT N <sup>o</sup>	DESCRIPTION			CODE N <sup>o</sup> DIST.
		TYPE	WIDTH	THICKNESS	
		Gravel	24'	3/4"	No Record of Constr. Added in 1934
1934		Oil Tr. Gravel	26'	1 1/2"	10000 Gal./Mile Maint. Dept.
1936	92-168-21-3	Grading Br. 3075 Br. 1056	32' 27'		23' D.S. W 108 D 235
1936	92-168-21-4	Grading	32'		Contract completed June 1937
1937	92-168-21-3	Stab. Gravel	30'	4"	237
1937	92-168-21-4	Stab. Gravel	30'	6"	237
1939	A.F.E. 15	Bit. Surface Tr.	28'	3/4"	Maint. Dept.
M	1940	A.F.E. 10	Bit. Seal Coat		RT-9, 3359 Gal./Mi. Maint. Dept.
M	1941	A.F.E. 11	Bit. Retreat	22'	SC 3,4963 Gal./Mi. Grav. 244 C.Y./Mi. Maint. Dept.
M	1945	A.F.E. 4	Spot Treat. Bit. Surf. Repair		RT 5,587 Gal./Mi. Grav. 32 C.Y./Mi. Maint. Div.
M	1946	A.F.E. 4	Bit. Surf. Repair	18'	SC 3,29296 Gal. Agg. 1464 C.Y.
C	1947	A.F.E. 18	Bit. Resurfacing Mixed Bit. Spot Bit. Stab. Gr. Base	24'	MC-3,97077 Gal. Agg. 1310 Tons Added
C	1949	A.F.E. 34	Grading Bit. Surfacing Mixed Bit.	26'	1 1/4" SC 3,10494 Gal. Agg. 488 C.Y.
M	1949	A.F.E. 4 A.F.E. 22	Bit. Fog Seal Spot Subgr. Corr.	24'	RCS-08 MC-3,12091 Gal. Agg. 135 C.Y.



YEARS FROM	TOTAL MILES TO	UNINCORPORATED		INCORPORATED		RURAL		URBAN	
		RDWY. MI.	BR. MI.	RDWY. MI.	BR. MI.	RDWY. MI.	BR. MI.	RDWY. MI.	BR. MI.
1934	1935	16.81	0.00	0.00	0.00	16.81	0.00	0.00	0.00
1935	1949	15.27	0.01	0.00	0.00	15.26	0.01	0.00	0.00
1939		12.69	12.68	0.01	0.00	0.00	12.68	0.01	0.00

REMARKS: Layout is to scale as of 1936

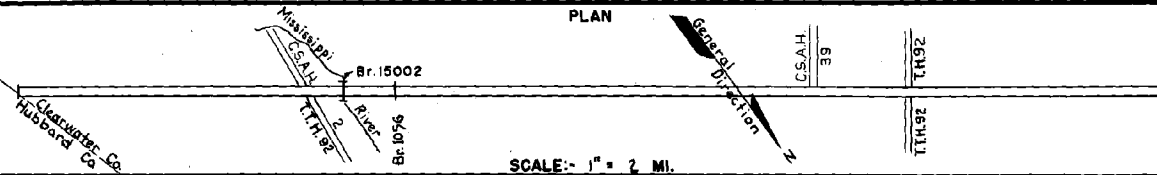
(1) Mileage corrected on basis of letter from David Rose dated 9-17-43

PREPARED BY  
HIGHWAY PLANNING SURVEY  
IN COOPERATION WITH  
U.S. PUBLIC ROADS ADMINISTRATION

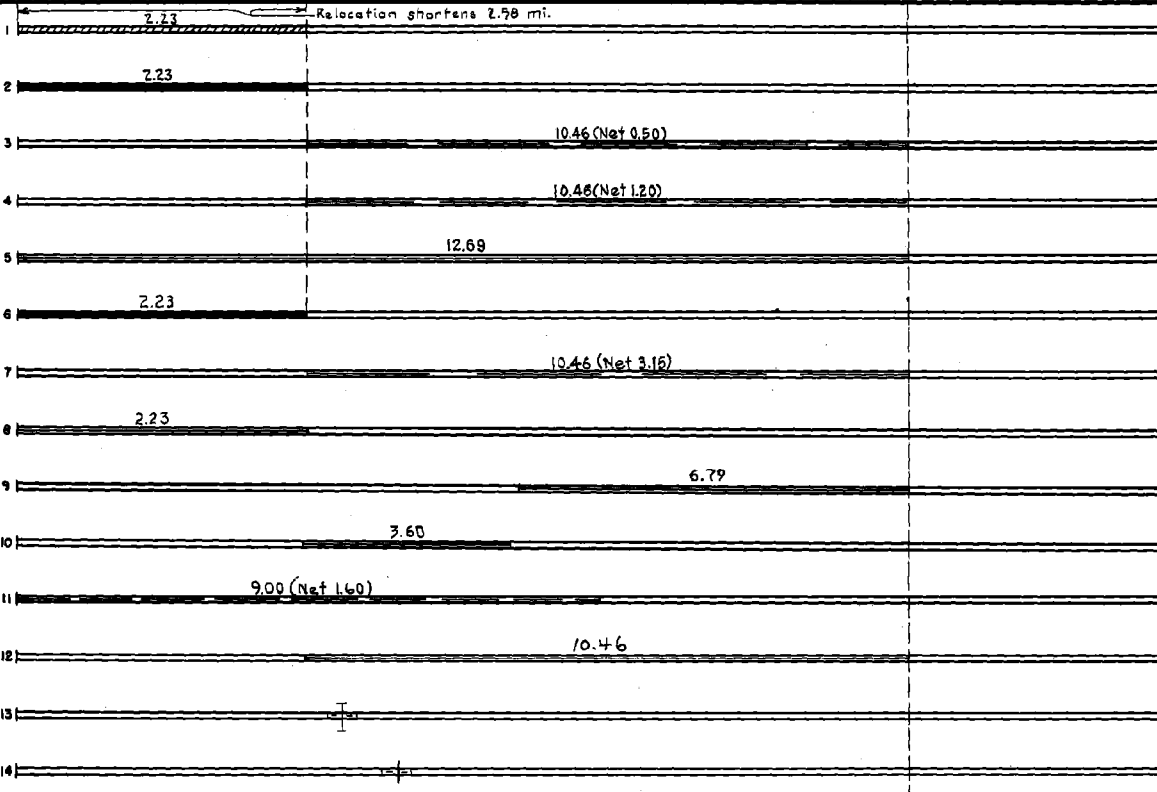
STATE OF MINNESOTA  
DEPARTMENT OF HIGHWAYS  
ROAD LIFE STUDIES  
CONSTRUCTION PROJECT LOG RECORD

CONTROL SECTION 1507  
TRUNK HIGHWAY 200  
COUNTY Clearwater  
DISTRICT 2A

LIMITS: E. Co. Line to Jct. T.H. 92



YEAR BUILT	PROJECT N <sup>o</sup>	DESCRIPTION			CODE N <sup>o</sup> DIST.
		TYPE	WIDTH	THICKNESS	
1950 (2)	1505-01	Grading Sand-Gravel Lift Gravel Surf.	24'	12" 24"	350
1951	1505-07	Bit. Stab. upper 1' of Base Mixed Bit	27'		751
1952	A.F.E. 4	Spot Treat. Bit. Surf. Repair	26'		
1954	A.F.E. 604	Spot Seal Coat	24'		
1955	A.F.E. 605	Light Bit. Seal	24'		
1956	1505-08	Plant Mix Bit.	24'	2" added	756
1958	A.F.E. 604	Spot Treat. Bit. Surf. Repair	24'		
1964	C	Light Bit. Seal	25'		
1965	SF	Bit. Surf. Repair	25'		
1966	SF	Bit. Surf. Repair	24'		
1970	SF	Bit. Surf. Repair	24'	1 1/4"	
1968	SF	LIGHT BIT. SEAL			1168
1973	1505-15	PLATE BEAM GUARDRAIL FOR B.R. No. 3075			1473
1974	1500-02	PLATE BEAM GUARD RAIL B.R. # 1056			179



YEARS FROM	TOTAL MILES	UNINCORPORATED		INCORPORATED		RURAL		URBAN	
		RDWY. MI.	BR. MI.	RDWY. MI.	BR. MI.	RDWY. MI.	BR. MI.	RDWY. MI.	BR. MI.

REMARKS: See Sheet No. 1  
(2) Contract not final but work substantially complete in 1950.  
For Other Projects See Dist. No. 1681

