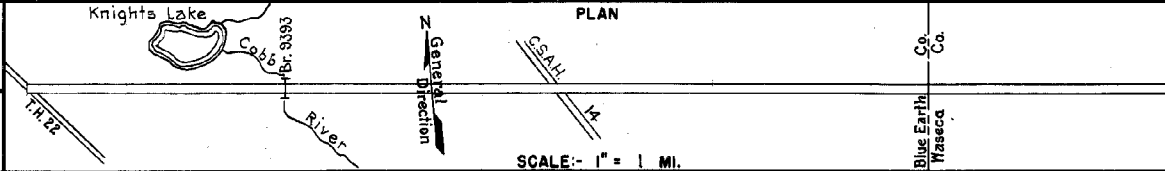


PREPARED BY
HIGHWAY PLANNING SURVEY
IN COOPERATION WITH
U. S. PUBLIC ROADS ADMINISTRATION

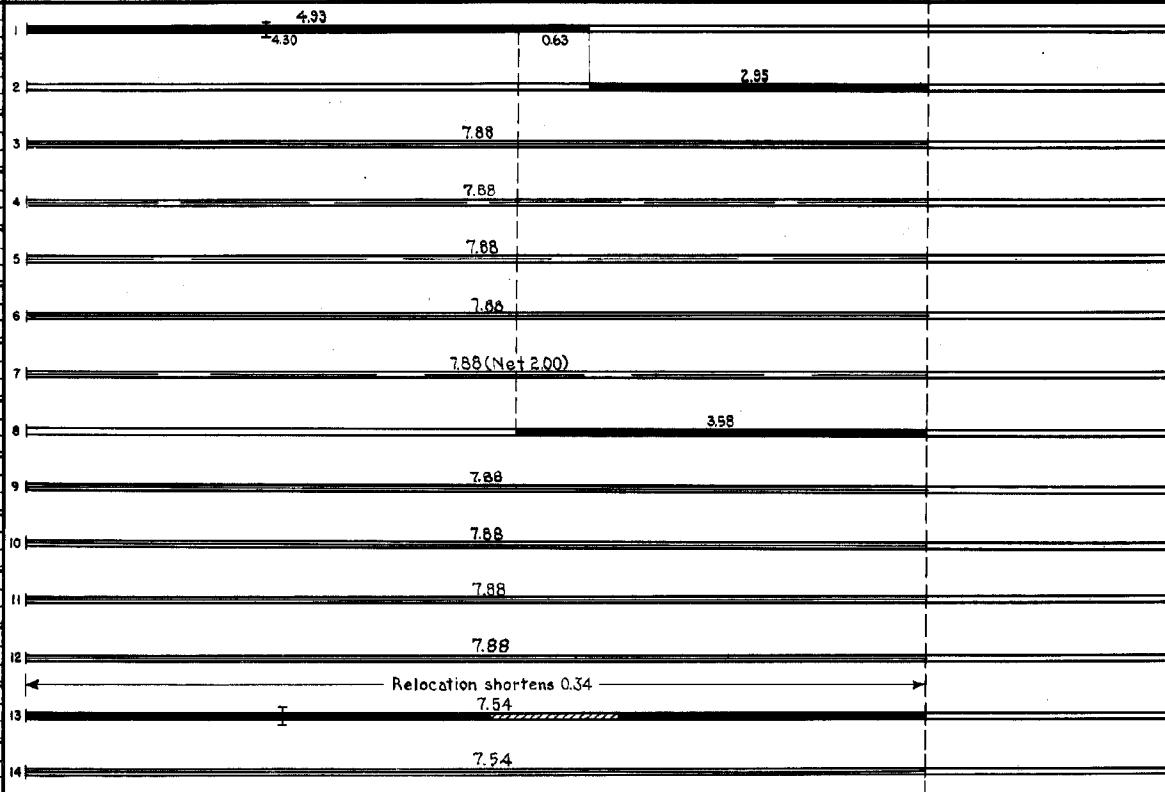
STATE OF MINNESOTA
DEPARTMENT OF HIGHWAYS
ROAD LIFE STUDIES
CONSTRUCTION PROJECT LOG RECORD

CONTROL SECTION 0707
TRUNK HIGHWAY 30
COUNTY Blue Earth
DISTRICT 7A

LIMITS: South Jct. T.H.22- East Co. Line



YEAR BUILT	PROJECT N°	DESCRIPTION			CODE N°
		TYPE	WIDTH	THICKNESS	
		Gravel Br. N° 944	24' 15"	2"	No Record of Constr. Added in 1934, 60' R.C.Arch. Co. Job N° 2607,
1926		Gravel	24'	2 1/2"	Added in 1934.
M	1940 A.F.E. 7	Regravelling			464 Tons / Mile. Maint. Dept.
M	1943 A.F.E. 6	Grav. Resurface (Spots)			25 C.Y. / Mi. Maint. Dept.
M	1944 A.F.E. 6	Grav. Resurfacing (Spots)			84 C.Y. / Mi. Maint. Div.
M	1946 A.F.E. 6	Grav. Resurfacing			1976 C.Y.
M	1948 A.F.E. b	Grav. Resurfacing (Spots)			416 C.Y.
C	1949 A.F.E. 27	Heavy Reehaping Gravel Surfacing	28' 28'	1 1/2"	4592 Tons
M	1970 A.F.E. 6	Gravel Resurfacing			3162 Tons
M	1991 A.F.E. 6	Grav. Resurfacing			2296 Tons
M	1953 A.F.E. 606	Grav. Resurfacing			2412 Tons
M	1956 A.F.E. 606	Grav. Resurfacing			2229 Tons
C	1958 0707-02 0707-03	Grading Gravel Br. 9393	44' 24' 32'	1 1/2"	1120 Tons / Mi. 93' P.C.
M	1929 A.F.E. 606	Grav. Resurfacing			5480 Tons



YEARS FROM	TOTAL TO	TOTAL MILES	UNINCORPORATED		INCORPORATED		RURAL		URBAN	
			ROWY. MI.	BR. MI.	ROWY. MI.	BR. MI.	ROWY. MI.	BR. MI.	ROWY. MI.	BR. MI.
1934	1957	7.85	7.87	0.01	0.00	0.00	7.87	0.01	0.00	0.00
1956		7.54	7.52	0.02	0.00	0.00	7.52	0.02	0.00	0.00

REMARKS: Layout is to scale as of 1934

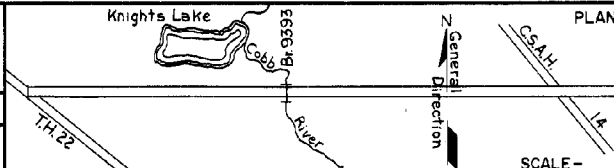
PREPARED BY
TRAFFIC AND PLANNING DIVISION
IN COOPERATION WITH
U.S. DEPARTMENT OF COMMERCE
BUREAU OF PUBLIC ROADS

STATE OF MINNESOTA
DEPARTMENT OF HIGHWAYS
ROAD LIFE STUDIES
CONSTRUCTION PROJECT LOG RECORD

CONTROL SECTION 0707
TRUNK HIGHWAY 30
COUNTY Blue Earth
DISTRICT 7A

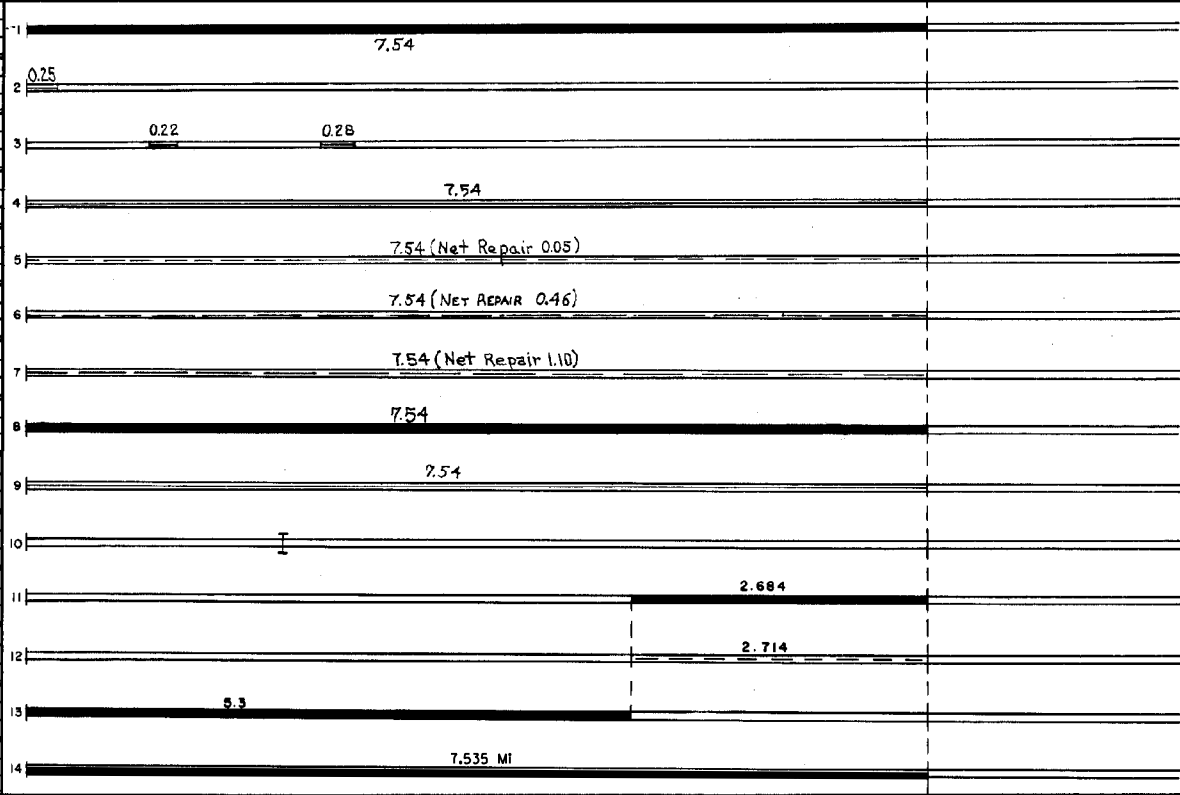
LIMITS: South Jct. T.H. 22 - East Co. Line

Ref. Pt. 146+00.882 - 154+00.427



Co. Co.
Blue Earth
Wasasca

YEAR BUILT	PROJECT NO	DESCRIPTION			
		TYPE	WIDTH	THICKNESS	REMARKS
C					
1960	0707-04	Experimental Base Road Mix Bit. Surf.	25'	Var.	
M			24'	1 1/2"	119,650 Gal. Bit. Mat.
1962		Bit. Surf. Repair	24'		Pl. Mix. Bit. 77 Tons Tack MC-3, 100 Tons
M					Bit. Pl. Mix. 662 Tons Tack MC3, 340 Gal.
1963	SF	Bit. Surf. Repair	24'		
M					RS-1C, 12484 Gal. Agg. 478 C.Y.
1965	C	Light Bit Seal	24'		
M					MC-250, Tack 40 Gal. Agg. 32 Ton
1968	SF	Bit. Surf. Repair	24'	1"	
M					MC800 Tack 225 Gal. MC-800, 232 Tons
1970	SF	Bit. Surface Repair	24'	1/2"	
M					MC-250, Tack 3580 Gal. Agg. 642 Tons
1971	SF	Spot Treat Bit. Surf. Repair	24'	3/4"	
C					Bit. Mix. 1053 Tons
1975	0707-06	Plant Mix Bit Overlay & Right Turn Lane Gravel Shoulders	24'	2 1/2"	
M					450 Tons
1975	SF	Seal Coat Washed Sand	24'		
C					
1983	0707-09	Replace Substructure & Widen Br. 9393	44'		
M			3'	4"	
1984	0707	Shoulder Gravel	8'	2"	2.03 Mi. 1936 Ton for CS 0707 & 8105
M					
1984	0707	Spot Bit Overlay	24'	1 1/2"	Sa. 2331 3648 Ton For CS 0707 & 8105
M					
1985	SF	Agg. Surfacing Bit. Shoulders	24'	1 1/4"	
C					
1999	0707-10	Bit. Overlay Gravel Shoulder	28'	3"	Spec. 2350 Class 1



YEARS		TOTAL MILES	UNINCORPORATED		INCORPORATED		RURAL		URBAN	
FROM	TO		RDWY. MI.	BR. MI.	RDWY. MI.	BR. MI.	RDWY. MI.	BR. MI.	RDWY. MI.	BR. MI.

REMARKS: See Sheet 1

