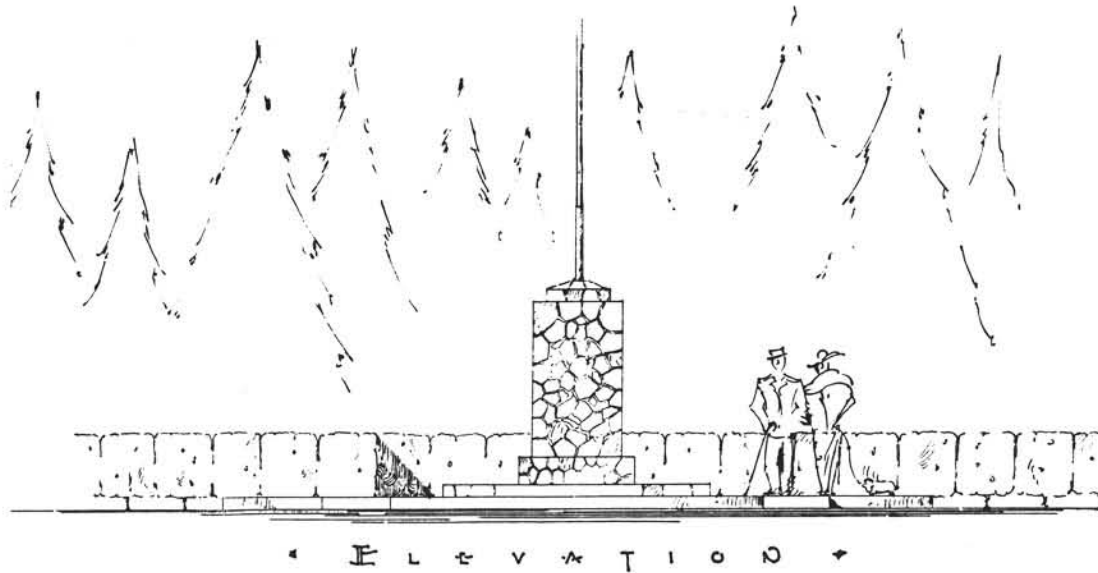


NOTE: Some corrections/changes have been made in this supplement (November 1, 2006; August 26, 2008)

MINNESOTA DEPARTMENT OF TRANSPORTATION
APRIL 2005



SUPPLEMENT TO
HISTORIC ROADSIDE
DEVELOPMENT STRUCTURES
ON MINNESOTA TRUNK HIGHWAYS

PREPARED BY
SUSAN GRANGER, SCOTT KELLY, AND KAY GROSSMAN
GEMINI RESEARCH, MORRIS, MINNESOTA

REPORT DOCUMENT PAGE	1. REPORT NO.	2.	3. Recipient's Accession No.
4. Title and Subtitle Supplement to Historic Roadside Development Structures on Minnesota Trunk Highways			5. Report Date April 2005
			6.
7. Author(s) Susan Granger, Scott Kelly, and Kay Grossman			8. Performing Organization Report No.
9. Performing Organization Name and Address Gemini Research 15 East Ninth Street Morris, MN 56267			10. Project/Task/Work Unit No.
			11. Contract (C) or Grant (G) No. Agr. 82693, work order 5
12. Sponsoring Organization Name and Address Minnesota Department of Transportation St. Paul, Minnesota 55155			13. Type of Report & Period Covered Final: Nov. 2002-April 2005
			14.
15. Supplementary Notes Authorized and funded by the Minnesota Department of Transportation and the Federal Highway Administration			
16. Abstract (Limit 200 words) In 2002-2004 the Minnesota Department of Transportation (Mn/DOT), working through its consultant Gemini Research, conducted a cultural resources survey and evaluation of eight properties to be added to Mn/DOT's Historic Roadside Development Structures Inventory. The addition of the eight brings the total inventory to 110 properties. Gemini Research recommends that three of the eight newly-inventoried properties are eligible for the National Register of Historic Places. This document, intended as a supplement to the 1998 inventory report <i>Historic Roadside Development Structures on Minnesota Trunk Highways</i> , adds the eight new properties to the inventory, updates key inventory information, and corrects selected errors in the original inventory. The updated information lists, for example, the historic preservation treatment reports that Mn/DOT has prepared for National Register-eligible and -listed sites. The report also briefly discusses serious threats facing the inventory sites including their deteriorating physical condition.			
17. Document Analysis a. Descriptors b. Identifiers/Open-ended Terms c. COSATI Field/Group			
18. Availability Statement: release unlimited	19. Security Class (This Period) unclassified	21. No. of Pages	
	20. Security Class (This Page) unclassified	22. Price	

**SUPPLEMENT TO
HISTORIC ROADSIDE DEVELOPMENT STRUCTURES
ON MINNESOTA TRUNK HIGHWAYS**

Submitted to the
Minnesota Department of Transportation
April 2005

Authorized and funded by the
Minnesota Department of Transportation
and the Federal Highway Administration
Agreement 82693, work order 5

Prepared by
Susan Granger, Scott Kelly, and Kay Grossman
Gemini Research, Morris, Minnesota

ABSTRACT

In 2002-2004 the Minnesota Department of Transportation (Mn/DOT), working through its consultant Gemini Research, conducted a cultural resources survey and evaluation of eight properties to be added to Mn/DOT's Historic Roadside Development Structures Inventory. The addition of the eight brings the total inventory to 110 properties. Gemini Research recommends that three of the eight newly-inventoried properties are eligible for the National Register of Historic Places. This document, intended as a supplement to the 1998 inventory report *Historic Roadside Development Structures on Minnesota Trunk Highways*, adds the eight new properties to the inventory, updates key inventory information, and corrects selected errors in the original inventory. The updated information lists, for example, the historic preservation treatment reports that Mn/DOT has prepared for National Register-eligible and -listed sites. The report also briefly discusses serious threats facing the inventory sites including their deteriorating physical condition.

TABLE OF CONTENTS

Introduction	1.1
Inventory Objectives and Methods	2.1
Newly-Inventoried Properties	3.1
List of Newly-Inventoried Properties	3.1
Characteristics of Newly-Inventoried Properties	3.1
Evaluation of Newly-Inventoried Properties	3.8
Inventory Update and Errata	4.1
Revised National Register Status	5.1
Revised List of National Register-Listed Properties	5.1
Revised List of National Register-Eligible Properties	5.1
Revised List of National Register-Ineligible Properties	5.3
Recommendations	6.1
Illustrations	7.1
Photographs	7.1
Revised Map of Inventory Properties	7.7
References Additional to Those in the 1998 Report	8.1
 Appendix A: Mn/DOT Historic Roadside Development Structures Inventory of 110 Properties Ordered by Mn/DOT Control Section Number	 9.1
Appendix B: Mn/DOT Historic Roadside Development Structures Inventory of 110 Properties Ordered by Mn/DOT District	10.1
Appendix C: Mn/DOT Historic Roadside Development Structures Inventory of 110 Properties Ordered by Site Name	11.1

LIST OF ILLUSTRATIONS

Fig. 1	Council ring, Hewitt Roadside Parking Area, 1942. Courtesy Marvel Blaske . .	7.1
Fig. 2	Spring enclosure, Hewitt Roadside Parking Area, April 2003	7.2
Fig. 3	Stone table, Hewitt Roadside Parking Area, April 2003	7.2
Fig. 4	LaCrescent Overlook, Jan. 2003	7.3
Fig. 5	Flagpole and plaza, Noyes Roadside Parking Area, April 2003	7.3
Fig. 6	Pipestone National Monument Entrance Marker, Oct. 2002	7.4
Fig. 7	Reno Spring Roadside Parking Area, Jan. 2003	7.4
Fig. 8	Stillwater Retaining Wall, Nov. 2002	7.5
Fig. 9	Thompson Hill-Skyline Parkway Overlook, Oct. 2003	7.5
Fig. 10	Revised Map of Inventory Properties	7.7

INTRODUCTION

This supplement to the report *Historic Roadside Development Structures on Minnesota Trunk Highways* (1998) is intended to serve two purposes. First, the supplement reports the fact that eight additional properties were recently added to the Historic Roadside Development Structures Inventory of 102 properties that was completed in 1998. Secondly, the supplement provides an update of some key information in the 1998 inventory report, corrects some of the errors contained in the report and on individual inventory forms, and provides further recommendations.

■ THREATS TO THE SITES

This supplemental report does not describe in detail an important change that has occurred since the 1998 inventory – the additional physical deterioration of many of the sites, including some of the most popular. Some cases have been so acute that Mn/DOT has been compelled to close sites, or portions thereof, to protect fragile stonework and ensure public safety. The fact that many of the approximately 70-year-old properties are functional and well-loved today is a testament to their excellent design and craftsmanship. However, many have reached the age where serious problems have developed and drainage needs correcting, walls need stabilizing, stones need remortaring, and plant materials need replacement. Mn/DOT has assessed the condition and preservation potential of the most significant sites and is ready with strategies for their repair. If partnerships can be established, funding acquired, and the necessary work completed, the sites will continue to serve the public for another 70 years.

The fragile physical condition of the inventoried properties is also exacerbated by reduced funding for rest area maintenance and operation in a time of state and federal budget constraint. Mn/DOT is actively seeking outside funding and caretaking partnerships to help preserve its historic properties, but budgetary shortfalls and reduced staff time will continue to be a serious challenge for the near future.

Finally, many of the sites in the central and eastern parts of the state are being affected by road-widening projects that threaten to irreversibly alter these significant historic landscapes and their setting. Historic roadside development sites were often built along the most scenic stretches of highway – highways that today carry ever-increasing traffic loads. It is Mn/DOT's challenge to meaningfully take these historic properties into account during early project planning and to develop sensitive ways to ensure safety and traffic capacity along with protecting significant historic resources.

Fortunately, since 1998 Mn/DOT has been able to undertake substantial repair and rehabilitation at some important sites including Gooseberry Falls Concourse (2000), Orr Roadside Parking Area (2003), Craigie Flour Mill Historical Marker (2004), Reads Landing Overlook (2004), and Cold Spring Roadside Parking Area (2004-2005). In addition, plant materials were rehabilitated at the Floyd B. Olson Memorial Statue in a joint project with the City of Minneapolis (2004).

■ RECOGNITION

Since the original inventory was conducted, Mn/DOT's efforts to inventory, evaluate, and manage its significant collection of historic roadside development properties has been recognized with three prestigious awards:

In November 2001 the original survey and its report *Historic Roadside Development Structures on Minnesota Trunk Highways* (1998) won an Honor Award from the Preservation Alliance of Minnesota. In its recognition the Preservation Alliance stated, "the Minnesota Department of Transportation exercised extraordinary and commendable stewardship in creating and supporting this statewide program to identify and evaluate historic roadside development structures, many of which were constructed of local materials during the New Deal Era."

In May 2004, Mn/DOT's ongoing effort to inventory and manage its historic roadside development structures was chosen as the subject of Volume 6 of *Cultural Landscape Currents*, the online magazine of the National Park Service's Historic Landscape Initiative. *Currents* has a national audience and provides detailed, well-illustrated accounts of projects that serve as exemplary models for the treatment of historic landscapes.

In September 2004, Mn/DOT's rehabilitation of the stone overlook wall at the Orr Roadside Parking Area won a Merit Award in *Excellence in Highway Design*, a biennial awards program of the Federal Highway Administration. The award was presented in the historic preservation category, with a national field of competitors. The rehabilitation of the 1938 Orr overlook wall was completed in 2003.

INVENTORY OBJECTIVES AND METHODS

■ OBJECTIVES

The purpose of the inventory portion of the project was to survey and evaluate a group of roadside development properties that were identified by Mn/DOT after the original Historic Roadside Development Structures Inventory was conducted in 1996-1998.

■ METHODS

The Mn/DOT Historic Roadside Development Structures Inventory is a recording of properties located on current Mn/DOT right-of-way that contain pre-1961 standing structures.

To create the original inventory, Gemini Research compiled a master list of possible sites for inclusion by contacting Mn/DOT District staff and perusing a variety of highway department documents and lists from both historical and recent periods. Several hundred sites were reviewed. As the project proceeded, sites were dropped from the list if they contained no pre-1961 structures (determined through research and fieldwork), or if the site's structures were found to postdate 1960 (determined through research). A few sites whose structures postdate 1960 escaped the culling process (and remained in the inventory) because dates were not confirmed until fairly late in the project.

The eight new sites to be investigated came to the attention of the Mn/DOT Site Development Unit through various means including communication with Mn/DOT District staff.

In addition to investigating the eight sites, Gemini Research also reviewed some of the documents used to create the original inventory to determine whether any other sites were inadvertently missed in 1996-1998. Gemini concluded that no sites with major standing structures were missed, although it is likely that wayside rests with minor structures (such as pre-1961 timber dummy posts or low concrete fireplaces) have not been inventoried.

Methods for fieldwork, research, and evaluation of the eight sites were identical to those employed during the original survey. The sites' potential National Register eligibility was evaluated using the historic context "Roadside Development on Minnesota Trunk Highways, 1920-1960," which was developed during the original inventory project. Fieldwork, research, and evaluation of the eight sites occurred in late 2002-early 2004.

The project was conducted by Gemini Research with Susan Granger serving as principal investigator and Scott Kelly as investigator. Liz Walton of the Mn/DOT Site Development Unit was project manager. Jackie Sluss of the Mn/DOT Cultural Resources Unit and Susan Roth of the SHPO provided oversight and technical support.

■ FINAL PRODUCTS

The final products include eight inventory files and this supplemental report. The eight inventory files are identical to those developed during the original survey. (The contents of inventory files are listed

INVENTORY OBJECTIVES AND METHODS

on page 2.4 of the 1998 report.) All inventory files are stored in the Mn/DOT Site Development Unit, with an abbreviated set on file in the State Historic Preservation Office (SHPO) located at the Minnesota Historical Society.

NEWLY-INVENTORIED PROPERTIES

■ LIST OF NEWLY-INVENTORIED PROPERTIES

Eight properties were added to the Mn/DOT Historic Roadside Development Structures Inventory. The eight are listed below:

<u>Site Name</u>	<u>SHPO Inventory #</u>	<u>Mn/DOT District</u>
Thompson Hill-Skyline Pkwy Ovr	SL-DUL-2468	1A
Pillsbury Mine Overlook	SL-BAL-004	1B
Noyes Roadside Parking Area	KT-SVT-002	2B
Hewitt Roadside Parking Area	TO-HEW-012	3A
Reno Spring Roadside Parking Area	HU-JEF-007	6A
LaCrescent Overlook	HU-LCC-009	6A
Pipestone Nat Monu Entr. Marker	PP-PPC-154	8B
Stillwater Retaining Wall	WA-SWC-1205	Met E

The location of the eight properties appears on the "Revised Map of Inventory Properties" in this report's Illustrations.

■ CHARACTERISTICS OF NEWLY-INVENTORIED PROPERTIES

Some of the characteristics of the eight newly-inventoried properties are reported below. These characteristics correspond to the chapters entitled "General Findings" and "Description of the Inventoried Features" in the 1998 report, which should be referenced for further information.

SITE LAYOUT

The general site layout of the eight new sites falls into the following categories:

<u>Site Layout</u>	<u># of Sites</u>
Highway Pull-offs	5
Complex Sites	1
Formal Parks	0
Other Site Layout	2

NEWLY-INVENTORIED PROPERTIES

REST AREA CLASS

The eight new sites represent the following Mn/DOT rest area classes:

<u>Rest Area Class</u>	<u># of Sites</u>
Class 1	0
Class 2	0
Class 3	1
Class 4	5
No class assigned	2

STYLE OF PROPERTIES

All eight of the inventoried properties show the influence of the National Park Service Rustic Style.

AGE OF PROPERTIES

Four of the eight properties were built during the New Deal (1933-1943) and four were built after the New Deal era. The eight sites are listed below in the order of year built:

During the New Deal

Hewitt Roadside Parking Area	1936	TO-HEW-012	3A
Noyes Roadside Parking Area	1937	KT-SVT-002	2B
Stillwater Retaining Wall	ca. 1937	WA-SWC-1205	Met E
LaCrescent Overlook	1941	HU-LCC-009	6A

After the New Deal

Reno Spring R.P.A.	1950	HU-JEF-007	6A
Pipestone Nat Monu Entrance Mrkr	1952	PP-PPC-154	8B
Pillsbury Mine Overlook	1962	SL-BAL-004	1B
Thompson Hill-Skyline Pkwy Ovr	ca. 1967	SL-DUL-2468	1A

DESIGNERS

The designers of the eight newly-inventoried properties are indicated below. Three of the properties were designed by prominent landscape architect A. R. Nichols.

A. R. Nichols

Noyes Roadside Parking Area	KT-SVT-002	2B
Hewitt Roadside Parking Area	TO-HEW-012	3A
Stillwater Retaining Wall	WA-SWC-1205	Met E

Fred Vogt (of the MHD)

Pipestone Nat Monu Ent Marker	PP-PPC-154	8B
-------------------------------	------------	----

Minnesota Dept. of Highways (Unspecified)

Thompson Hill-Skyline Pkwy Ovr	SL-DUL-2468	1A
Pillsbury Mine Overlook	SL-BAL-004	1B
Reno Spring R.P.A.	HU-JEF-007	6A
LaCrescent Overlook	HU-LCC-009	6A

BUILDERS

Two of the eight new sites were built with the assistance of New Deal federal relief agencies and six were built by the Minnesota Department of Highways:

Federal Relief Programs***National Youth Administration (NYA)***

Stillwater Retaining Wall	WA-SWC-1205	Met E
---------------------------	-------------	-------

Works Progress Administration (WPA)

Hewitt Roadside Parking Area	TO-HEW-012	3A
------------------------------	------------	----

Minnesota Department of Highways

Thompson Hill-Skyline Pkwy Ovr	SL-DUL-2468	1A
Pillsbury Mine Overlook	SL-BAL-004	1B
Noyes Roadside Parking Area	KT-SVT-002	2B
LaCrescent Overlook	HU-LCC-009	6A
Reno Spring R.P.A.	HU-JEF-007	6A
Pipestone Nat Monu Ent Marker	PP-PPC-154	8B

INTEGRITY AND CONDITION

The integrity of the eight new sites was categorized as follows:

<u>Integrity</u>	<u># of Sites</u>
Intact or slightly altered	4
Moderately altered	3
Very altered	1

The condition of the eight properties ranges from fair to very poor.

ORIGINAL CONSTRUCTION PLANS

Original or early construction plans were identified for five of the eight newly-inventoried sites.

PLANT MATERIALS

Plant materials used on the eight new sites were consistent with those found on the majority of sites in the original inventory. (For example, see Appendix H in the 1998 report.) These plants include turf grass, trees and shrubs that appear to be native to the surrounding forests, and trees, shrubs, and vines introduced to the site by the designer. The latter includes plants chosen for hardiness, low maintenance, and year-around interest.

HISTORIC CONTEXT

All eight properties are associated with the historic context entitled "Roadside Development on Minnesota Trunk Highways, 1920-1960."

TYPES OF FEATURES

Fourteen types of standing structures were recorded on the eight new sites (all possible types are listed for reference):

<u>Type of Feature</u>	<u>Number Inventoried</u>	<u>Type of Feature</u>	<u>Number Inventoried</u>
Bathhouse		Marker	3
Bench(es), other	1 pair	Other feature	
Bench(es), stone	1 set	Overlook wall	2
Bridge/culvert	1	Picnic shelter(s)	1
Cave		Picnic table(s), other	
Council ring		Picnic table(s), stone	1 set
Curb, stone		Privies	1
Dam	1	Refuse container(s)	
Dock		Restroom building	
Drinking fountain(s)		Retaining wall	1
Entrance wall	1 pair	Rock garden	
Fireplace(s), other		Sea wall	
Fireplace, stone		Sidewalk	
Flagpole(s), other	1 set	Signpost, other	
Flagpole, stone base	1	Signpost, stone	
Flagstone pad(s)		Spring water outlet	2
Footbridge		Statue	
Foundation		Storage building	
Gravestone		Trail steps	
Guardrail, stone		Wall, other	
Information board		Well/pump	
Information booth			

The 14 types of features are described below.

BENCHES

One of the sites has stone (or part stone) benches:

Noyes Roadside Parking Area **KT-SVT-002 2B**

One of the sites has benches of concrete, wood, or metal:

LaCrescent Overlook **HU-LCC-009 6A**

The benches at ***Noyes Roadside Parking Area*** – a set of three – have poured concrete slab seats resting on mortared fieldstone pedestals. The benches rest on a fieldstone plaza. The pair of benches at ***LaCrescent Overlook*** has seats and pedestals of poured concrete. The benches stand against the overlook wall.

BRIDGES AND CULVERTS

One of the eight sites has a culvert:

Reno Spring R.P.A. **HU-JEF-007 6A**

The culvert at ***Reno Spring Roadside Parking Area*** is a small structure with a headwall and wing walls of limestone rubble. The culvert helps carry spring water away from the wayside rest.

DAMS

One of the sites has a dam:

Hewitt Roadside Parking Area **TO-HEW-012 3A**

The dam at ***Hewitt Roadside Parking Area*** is a small, simple, low concrete structure that was built by the WPA in 1936 to create a pool for fishing and swimming within the park.

ENTRANCE WALLS

One set of entrance walls was recorded at:

Pipestone Nat Monu Ent Marker **PP-PPC-154 8B**

The ***Pipestone National Monument Entrance Marker Walls*** are a pair of stone pylons built in 1952 to mark the state highway entrance to the Pipestone National Monument. The structures have a battered, angular design and the tallest pylon supports a hanging-arm sign.

FLAGPOLES

One of the eight new sites has a stone flagpole base:

Noyes Roadside Parking Area **KT-SVT-002** **2B**

Another of the sites has a set of recent flagpoles with concrete bases:

La Crescent Overlook **HU-LCC-009** **6A**

The flagpole base at ***Noyes Roadside Parking Area***, built in 1937, is an elaborate 8'-tall fieldstone structure that is similar in scale to stone flagpole bases at ***Blazer Park*** and ***Garrison Concourse*** – both recorded in the original inventory. Noyes' flagpole and the stone plaza on which it stands create the focal point of the site. (Note: because of post-9/11 border security, the public can no longer visit the site.) The structures at ***LaCrescent Overlook*** are a trio of recent flagpoles with low, unobtrusive concrete bases.

MARKERS

Two of the eight newly-inventoried properties have interpretive markers – one site has one marker and the other has two. The markers are free-standing and represent the following types (which are described in the 1998 report):

Lecterns, Free-standing	1
Metal signs	1
Other, Free-standing	1

The free-standing lectern-style marker stands at:

Pillsbury Mine Overlook **SL-BAL-004** **1B**

The marker at ***Pillsbury Mine Overlook*** is one of a series of Minnesota Highway Department markers built in the 1950s and 1960s at ***Clifton-French River***, ***Marine on St. Croix***, ***Minnesota Woman***, and elsewhere. The marker at Pillsbury is similar to the other markers in the series with one exception: it is built of ore-laden rock from the local area. Most of the other markers in the series are built of tan, rockfaced, random ashlar limestone, regardless of where in the state they are located. (The use of a single type of stone distinguishes the 1950s-1960s marker series from the New Deal-era markers, which were usually made of the stone native to a locale.)

The metal marker stands at:

Noyes Roadside Parking Area **KT-SVT-002** **2B**

The marker at ***Noyes Roadside Parking Area*** is a metal and plastic interpretive sign that was erected by Mn/DOT in 1997.

The other free-standing marker stands at:

Noyes Roadside Parking Area KT-SVT-002 2B

This marker at *Noyes Roadside Parking Area* is a stone obelisk with incised lettering. It was erected circa 1929 to mark the location of the international boundary line between the United States and Canada. (Note: because of post-9/11 border security, the public can no longer visit the site.)

OVERLOOK WALLS

Overlook walls stand at two of the eight properties:

Thompson Hill-Skyline Pkwy Ovr	SL-DUL-2468	1A
La Crescent Overlook	HU-LCC-009	6A

The overlook wall at LaCrescent was built in 1941 during the Depression by the Minnesota Department of Highways. It has a tripartite design with a curving, central lookout bay that faces the Mississippi River flood plain. The wall is built of tan, rockfaced, coursed ashlar limestone (native to the region) and is basically intact and in fair condition.

Research revealed that the overlook wall at *Thompson Hill-Skyline Parkway Overlook* was probably not built until circa 1967. It is a low, 560'-long wall built of undressed, dark gray and brown stone that is native to the Duluth area. The wall is in very poor condition, but offers an outstanding view of the Duluth harbor. The overlook is located below and fairly close to the Thompson Hill Travel Information Center building and therefore receives frequent visitors.

PICNIC SHELTERS

One picnic shelter was included among the eight sites. It stands at:

Hewitt Roadside Parking Area TO-HEW-012 3A

Built circa 1978, the shelter at *Hewitt Roadside Parking Area* is a simple, modern structure with a gabled roof supported by metal poles.

PICNIC TABLES, STONE

A set of four unusual stone picnic tables was inventoried at:

Hewitt Roadside Parking Area TO-HEW-012 3A

The tables at *Hewitt Roadside Parking Area* have randomly-laid granite trestle supports. The table tops and bench seats are made of poured concrete with chamfered edges. The tables rest on poured concrete pads. They are in poor condition and deserve careful repair because of their unique and rare design. The tables were built by the WPA in 1936.

NEWLY-INVENTORIED PROPERTIES

PRIVIES

One privy was encountered at the following site:

Hewitt Roadside Parking Area **TO-HEW-012 3A**

Built circa 1960, the privy at **Hewitt Roadside Parking Area** is an unassuming concrete block structure with a gabled roof.

RETAINING WALLS

One retaining wall was inventoried. It stands at:

Stillwater Retaining Wall **WA-SWC-120 Met E**
5

The **Stillwater Retaining Wall** was built circa 1937 as part of the Roadside Development Division's extensive work in the Stillwater area. (See **Stillwater Overlook - South, Indian Battleground Historical Marker, Stillwater Overlook - North**, and **St. Croix Boomsite Roadside Parking Area**) The Stillwater projects were designed by A. R. Nichols and built by federal relief crews. Much of the stone, including that used to build this retaining wall, was salvaged from the former Minnesota Territorial Prison at Stillwater.

SPRING WATER OUTLETS

The eight newly-inventoried sites contained two spring water outlets. They are located at:

Hewitt Roadside Parking Area **TO-HEW-012 3A**
Reno Spring R.P.A. **HU-JEF-007 6A**

The spring enclosure at **Hewitt Roadside Parking Area** was built by the WPA in 1936 of pink and gray granite rocks. Unique in the inventory, it is an unusual, picturesque structure with a small "house" and "bridge" that enclose and direct the flow of a natural spring. The spring structure at **Reno Spring Roadside Parking Area** was built in 1950. It is a 22'-long gray limestone structure that doubles as a retaining wall. Free-flowing spring water was fed into the structure via an iron pipe, spilled into a stone bowl, and drained away through a system of culverts and ditches. Relatively few spring enclosures were recorded in the Roadside Development Inventory, but they are compelling because they represent an interesting variation in the highway department's efforts to supply early travelers with fresh drinking water on the road.

■ EVALUATION OF NEWLY-INVENTORIED PROPERTIES

Gemini Research evaluated the potential National Register eligibility of the newly-inventoried properties within the historic context "Roadside Development on Minnesota Trunk Highways, 1920-1960" and against National Register eligibility criteria. (For more information on evaluation,

see chapter 6 of the 1998 report.) The sites' National Register eligibility within other statewide historic contexts was also reviewed. The result of this evaluation is listed below:

Thompson Hill-Skyline Pkwy Ovr	SL-DUL-2468	1A	Not Eligible
Pillsbury Mine Overlook	SL-BAL-004	1B	Not Eligible
Noyes Roadside Parking Area	KT-SVT-002	2B	Eligible ¹
Hewitt Roadside Parking Area	TO-HEW-012	3A	Not Eligible
Reno Spring Roadside Parking Area	HU-JEF-007	6A	Eligible ¹
LaCrescent Overlook	HU-LCC-009	6A	Eligible ¹
Pipestone Nat Monu Entr. Marker	PP-PPC-154	8B	Not Eligible
Stillwater Retaining Wall	WA-SWC-1205	Met E	Not Eligible

¹Eligible under the Roadside Development historic context.

NEWLY-INVENTORIED PROPERTIES

INVENTORY UPDATE AND ERRATA

The next several pages provide an update of the information that appears in the 1998 inventory report and on the inventory forms. The updated information is generally designed to:

- Incorporate the eight new properties into the inventory.
- Report major changes to the original inventory properties and to the information compiled about them and correct selected errors therein.

■ INFORMATION THAT SUPPLEMENTS THE INVENTORY FILES

Since 1998, Mn/DOT has conducted several projects that provide important supplementation to the information contained in the original inventory files. Through these treatment reports, boundary studies, and National Register nominations, Mn/DOT gathered important assessments of the physical condition of the properties and other information necessary to help plan the short- and long-term future of the sites.

TREATMENT REPORTS

Mn/DOT contracted with five architectural firms to prepare historic preservation treatment recommendations for the National Register-eligible and -listed sites. The treatment reports assess current physical condition and recommend strategies for the preservation, repair, and rehabilitation of the properties. They should be used in conjunction with the inventory forms; in many cases they update the physical descriptive information on the forms. The treatment reports were completed in 2005. A list of the treatment reports appears in the References section of this report.

BOUNDARIES STUDIES

The original inventory files did not specify or describe the recommended boundaries for National Register-eligible properties. Mn/DOT contracted with Gemini Research to prepare these boundary studies, which are based on historic plans, fieldwork, aerial photos, and Mn/DOT right-of-way maps. The project was completed in 2004. A list of properties for which boundary studies were prepared appears in the References section of this report. The boundary studies should be used in conjunction with the inventory forms.

NEW NATIONAL REGISTER NOMINATIONS

Mn/DOT prepared several National Register nominations for historic roadside development properties in 2002-2003 as mitigation for the demolition of ***Spang Spring Roadside Parking Area***. This information is more detailed and, in some cases, more complete than the information on the inventory forms. Included are:

- National Register nominations for seven inventory properties. A list of the seven appears in the References section of this report.
- a National Register nomination for the ***Hinckley State Line Marker*** (PN-OGM-004) in District 1A. The Hinckley Marker is among approximately 16 state line markers that were created by the Minnesota Department of Highway's Roadside Development Division. These properties were not recorded during the original inventory nor in this supplemental inventory because of budget constraints, but should be considered among Mn/DOT's historic roadside development properties for management purposes and eventually added to the inventory. The state line markers are described in Appendix K of the 1998 report.
- an amendment to the SHPO's National Register Multiple Property Documentation Form (MPDF) entitled "Federal Relief Construction in Minnesota, 1933-1941." The amendment addresses federal-relief-built roadside development properties in Minnesota.

RECOMMENDATIONS FOR NON-ELIGIBLE PROPERTIES

Mn/DOT contracted with Gemini Research to prepare brief recommendations for the inventory properties that were evaluated as being ineligible for the National Register. While these properties do not meet the criteria for listing on the National Register (usually because of age or site alterations), many have valuable qualities. For example, ***Babcock Memorial Park*** in Elk River, designed by A. R. Nichols and built by the National Youth Administration, has three stone picnic tables and two stone council rings on a beautiful riverside site that merits careful management. Similarly, the ***Silver Lake Roadside Parking Area*** in Rochester contains a Nichols-designed stone overlook wall (built by the Works Progress Administration) that is historically and functionally within and part of the city's Silver Lake Park – a large city park designed by A. R. Nichols and built by the W.P.A. with stone bridges and other structures that match Mn/DOT's overlook wall.

■ CHANGES IN NATIONAL REGISTER STATUS

Since 1998, the National Register status of several inventoried properties has changed as listed in the table below. After the table, each change is described.

INVENTORY UPDATE AND ERRATA

TABLE OF CHANGES IN NATIONAL REGISTER STATUS

			Status in 1998 Report	Current Status	Reason for Change
Lester River Bridge (Bridge 5772)	SL-DUL-2428	1A	Eligible	Listed	New National Register nomination
Cascade River Wayside ¹	CK-UOG-044	1A	Eligible	Listed	New National Register nomination
Spang Spring R.P.A.	IC-SPG-004	1B	Eligible	Ineligible	Site razed (fully or partly)
Orr Roadside Parking Area	SL-ORC-005	1B	Eligible	Listed	New National Register nomination
Vineland Historical Marker	ML-KAN-006	3A	Eligible in future and in a listed district	Eligible and in a listed district	Site reached 50 years old; status in Kathio Hist District unchanged
Dickinson Spring R.P.A.	WR-RKT-006	3B	Eligible	Ineligible	Site razed (fully or partly)
Craigie Flour Mill Historical Marker	OT-OTT-021	4A	Eligible	Listed	New National Register nomination
Graceville Historical Marker	BS-GRA-017	4B	Eligible	Listed	New National Register nomination
Kensington Runestone Replica R.P.A.	DL-ALE-067	4B	Ineligible	Eligible	SHPO determined site eligible ca. 2000
Chatfield Historical Marker	FL-CHC-034	6A	Ineligible	Eligible	Gemini changed recommendation
Reads Landing Overlook	WB-PEP-012	6A	Eligible	Listed	New National Register nomination
Preston Overlook	FL-PRC-041	6A	Eligible	Listed	New National Register nomination
Birch Coulee Historical Marker	RN-BCO-004	8A	Eligible in future	Eligible	Site reached 50 years old
Burns Avenue Overlook	RA-SPC-2927	Met E	Eligible in future	Eligible	Site reached 50 years old
Indian Battle Ground Hist. Marker	WA-SWC-713	Met E	Individually eligible and on a listed site	Ineligible	Site razed (fully or partly) and territorial prison site razed
Pine Bend Historical Marker	DK-IVG-023	Met E	Eligible	Ineligible	Site being razed (fully or partly)
Stillwater Overlook - North	WA-SWT-013	Met E	Ineligible	On a listed site	Gemini error in 1998; is on a listed site: the St. Croix Boomsite
Blazer Park	HE-GVC-047B	Met W	Not indiv eligible but in elig district	Not indiv eligible; district ineligible	site and district razed (fully or partly)
Graeser Park	HE-RBC-025	Met W	Individually eligible and in elig district	Not indiv eligible; district ineligible	Site altered; district razed (fully or partly)
Graeser Park - South	HE-RBC-160	Met W	Not indiv eligible but in elig district	Not indiv eligible; district ineligible	Site and district razed (fully or partly)
Lilac Park	HE-SLC-013	Met W	Not indiv eligible but in elig district	Not indiv eligible; district ineligible	Site to be razed; district razed (fully or partly)

INVENTORY UPDATE AND ERRATA

***Determined not indiv eligible
in August 2006 , due to TH100
construction***

St. Louis Park R.P.A.	HE-SLC-017	Met W	Individually eligible and in elig district	Still indiv elig; district ineligible	District razed (fully or partly); site retained and still eligible
TH 100 Culvert (Bridge 5442)	HE-GVC-051	Met W	Not indiv eligible but in elig district	Not indiv eligible; district ineligible	Site and district razed (fully or partly)
TH 100 at TH 55 Ret. Walls	HE-GVC-053	Met W	Not indiv eligible but in elig district	Not indiv eligible; district ineligible	Site and district razed (fully or partly)

¹Note name change: originally listed in the inventory as Cascade River Overlook, name changed to Cascade River Wayside at the time of National Register nomination.

Described below are the changes in National Register status summarized in the table above.

Lester River Bridge (Bridge 5772)

SL-DUL-2428 1A

Mn/DOT contracted with Gemini Research to prepare a National Register nomination for the ***Lester River Bridge (Bridge 5772)***. The site was listed on the National Register in 2002.

Cascade River Wayside

CK-UOG-044 1A

Mn/DOT contracted with Gemini Research to prepare a National Register nomination for ***Cascade River Wayside*** – called Cascade River Overlook in the 1998 inventory. The site was listed on the National Register in 2003.

Spang Spring R.P.A.

IC-SPG-004 1B

Spang Spring Roadside Parking Area, which was eligible for the National Register, was razed as part of Mn/DOT's reconstruction of TH 169.

Orr Roadside Parking Area

SL-ORC-005 1B

Mn/DOT contracted with Gemini Research to prepare a National Register nomination for ***Orr Roadside Parking Area***. The site was listed on the National Register in 2002.

Vineland Historical Marker

ML-KAN-006 3A

In 1998 Gemini recommended that ***Vineland Historical Marker*** would be eligible for the National Register when it reached 50 years of age (a National Register requirement). The site is now 50 years old and eligible.

Dickinson Spring R.P.A.

WR-RKT-006 3B

Dickinson Spring Roadside Parking Area, which was eligible for the National Register, was partly demolished by Mn/DOT.

Craigie Flour Mill Historical Marker

OT-OTT-021 4A

Mn/DOT contracted with Gemini Research to prepare a National Register nomination for ***Craigie Flour Mill Historical Marker***. The site was listed on the National Register in 2003.

Graceville Historical Marker

BS-GRA-017 4B

Mn/DOT contracted with Gemini Research to prepare a National Register nomination for ***Graceville Historical Marker***. The site was listed on the National Register in 2004.

Kensington Runestone Replica R.P.A. DL-ALE-067 4B

Gemini Research recommended in 1998 that the ***Kensington Runestone Replica Roadside Parking Area*** was ineligible because it was neither 50 years old, designed by a noted designer, or associated with a significant period or event like the New Deal. However, the SHPO subsequently determined that the site does meet National Register criteria. The SHPO determined the site is eligible because the Kensington Runestone evoked international attention and the replica in its roadside park was often visited as the principal regional symbol of the runestone, especially when the real runestone was in the Smithsonian Institution in Washington.

Chatfield Historical Marker FL-CHC-034 6A

Gemini Research revised its recommendation on the ***Chatfield Historical Marker***, changing it from ineligible to eligible. In 1998 Gemini recommended that, while the design of the wayside rest and the stone marker strongly resemble the roadside development properties of the federal relief era, the property was not built within the decade immediately following the end of the federal relief programs (1944-1954), but rather 11 years after the end (in 1955) and was therefore not eligible. After further study, Gemini now recommends that the property *is eligible* for the National Register as a site inspired by the New Deal sites, strongly resembling the New Deal sites, and built shortly after the New Deal. There are a finite number of sites in the state that were built shortly after, and inspired by, the New Deal sites (for example ***Burns Avenue Overlook*** and ***Vineland Historical Marker***) and Chatfield fits within this significant group.

Reads Landing Overlook WB-PEP-012 6A

Mn/DOT contracted with Gemini Research to prepare a National Register nomination for ***Reads Landing Overlook***. The site was listed on the National Register in 2004.

Preston Overlook FL-PRC-041 6A

Mn/DOT contracted with Gemini Research to prepare a National Register nomination for ***Preston Overlook***. The site was listed on the National Register in 2003.

Birch Coulee Historical Marker RN-BCO-004 8A

In 1998 Gemini recommended that ***Birch Coulee Historical Marker*** would be eligible for the National Register when it reached 50 years of age (a National Register requirement). The site is now 50 years old and eligible.

Burns Avenue Overlook RA-SPC-2927 Met E

In 1998 Gemini recommended that ***Burns Avenue Overlook*** would be eligible for the National Register when it reached 50 years of age (a National Register requirement). The site is now 50 years old and eligible.

Indian Battle Ground Hist. Marker**WA-SWC-713 Met E**

Indian Battle Ground Historical Marker was individually eligible for the National Register and located on a listed site, the Minnesota Territorial Prison. Both the wayside rest and the prison have been fully or partly demolished. The site has also been transferred to a local unit of government.

Pine Bend Historical Marker**DK-IVG-023 Met E**

Pine Bend Historical Marker, which is eligible for the National Register, is in the process of being partly demolished by Mn/DOT.

Stillwater Overlook - North**WA-SWT-013 Met E**

While it is not individually eligible for the National Register, **Stillwater Overlook - North** is located on a National Register-listed site called the St. Croix Boomsite. Gemini did not record this information on either the inventory form or in the 1998 report. (The St. Croix Boomsite is also a National Historic Landmark and is important to the history of St. Croix logging. Mn/DOT's St. Croix Boomsite Roadside Parking Area is also located here.)

Blazer Park**HE-GVC-047B Met W**

Blazer Park was not individually eligible for the National Register but was located within an eligible district called Lilac Way Historic District. Blazer Park and the district have both been partly or fully razed as part of Mn/DOT's reconstruction of TH 100.

Graeser Park**HE-RBC-025 Met W**

Mn/DOT's reconstruction of TH 100 on and near **Graeser Park** altered the property. Gemini Research recommended that it is no longer individually eligible for the National Register. For more information see *The Potential Effect of S.P. 2735-159 on Graeser Park in Robbinsdale (TH 100)* (Granger and Kelly 2001). The TH 100 reconstruction also razed the Lilac Way Historic District in which the site was located.

Graeser Park - South**HE-RBC-160 Met W**

Graeser Park - South was not individually eligible for the National Register but was located within an eligible district called Lilac Way Historic District. Both Graeser Park - South and the district were razed as part of Mn/DOT's reconstruction of TH 100.

Lilac Park**HE-SLC-013 Met W**

Lilac Park was not individually eligible for the National Register but was located within an eligible district called Lilac Way Historic District. The district was razed as part of Mn/DOT's reconstruction of TH 100. Lilac Park is also scheduled to be partly or fully razed.

St. Louis Park R.P.A.**HE-SLC-017 Met W**

St. Louis Park Roadside Parking Area was individually eligible for the National Register as well as being located within an eligible district called Lilac Way Historic District. While the St. Louis site is intact and still eligible, the surrounding district has been razed as part of Mn/DOT's reconstruction of TH 100. **Note:** Determined not individually eligible in 2006

TH 100 Culvert (Bridge 5442)**HE-GVC-051 Met W**

The **TH 100 Culvert (Bridge 5442)** was not individually eligible for the National Register but was located within an eligible district called Lilac Way Historic District. Both the culvert and the district were razed as part of Mn/DOT's reconstruction of TH 100.

TH 100 at TH 55 Ret. Walls**HE-GVC-053 Met W**

The **TH 100 at TH 55 Retaining Walls** were not individually eligible for the National Register but were located within an eligible district called Lilac Way Historic District. Both the retaining walls and the district were razed as part of Mn/DOT's reconstruction of TH 100.

■ OTHER CHANGES SINCE THE ORIGINAL INVENTORY**ADDITIONAL DEMOLITIONS**

Described above are several properties that have been fully or partly demolished since the inventory was conducted. This action changed their National Register status. Two more inventoried properties have also been partly or fully razed, but their National Register status did not change because they were not eligible for the National Register. They are:

Cross River Rest Area	CK-UOG-047	1A	Not Eligible
Dustin Memorial Wayside	WR-MDL-004	3B	Not Eligible

PROPERTIES NO LONGER ON MN/DOT RIGHT-OF-WAY

Four of the original inventoried properties are no longer on Mn/DOT right-of-way. Some were transferred to local units of government during the 1996-1998 inventory and some were subsequently transferred. Plans for the potential transfer of other properties such as the **Mendota Overlook** are being discussed.

Glenwood Overlook	PO-GLC-022	4B	Eligible
Bolles Mill Historical Marker	WA-AFC-035	Met E	Not Eligible
Indian Battle Ground Hist. Marker ¹	WA-SWC-713	Met E	Eligible
Mill Pond Roadside Parking Area	SC-SPC-069	Met W	Not Eligible

¹Site was subsequently demolished.

PROPERTIES REHABILITATED SINCE THE ORIGINAL INVENTORY

Since 1998 Mn/DOT has conducted full or partial rehabilitations at the following inventory properties:

Gooseberry Falls Concourse	LA-SVC-046	1A	Indiv. elig and on a listed site
Orr Roadside Parking Area	SL-ORC-005	1B	Listed
Cold Spring Roadside Parking Area ¹	SH-CSC-024	3A	Eligible
Craigie Flour Mill Historical Marker	OT-OTT-001	4A	Listed
Reads Landing Overlook	WB-PEP-012	6A	Listed
Olson, Floyd B., Memorial Statue ²	HE-MPC-9013	Met W	Eligible

¹In progress.

²Plant materials only.

Construction plans prepared for the rehabilitations provide additional information about these sites. (See Mn/DOT Rehabilitation Construction Plans in the References section of this report.)

■ SELECTED ERRORS, OMISSIONS, AND NEW INFORMATION LEARNED

In the six years that the inventory forms and 1998 report have been in use, several errors and omissions have been detected. Fortunately, most have been minor. Described below are some of the errors and omissions, as well as new information learned. The information reported herein generally affects the National Register eligibility of the properties and/or the characteristics of the properties that are important to compare with others in the inventory.

Cascade River Wayside CK-UOG-044 1A

Gemini Research conducted additional research on ***Cascade River Wayside*** (formerly known as Cascade River Overlook) to prepare a National Register nomination for the property. Based on this research and additional fieldwork to understand integrity, Gemini recommended that an 118-acre parcel – much larger than originally inventoried – be nominated to the National Register. The property includes the highway overlook, a segment of the highway itself, roadside landscaping, foot trails extending up both sides of the Cascade River and along the lakeshore, a picnic area east of the highway overlook, and many other features. See the National Register nomination (2003) for maps and updated information.

Fond du Lac Culvert (Bridge 5757) SL-DUL-2416 1A

During research to prepare treatment recommendations for ***Fond du Lac Culvert (Bridge 5757)***, Gemini Research learned that the design of the parkway along which the bridge is located likely dates from 1937-1938 – the same time that the bridge was built. (The parkway was named Evergreen Memorial Drive in 1947 and renamed Veteran's Evergreen Memorial Drive in 1986.) The parkway is about six blocks long and has an intact, somewhat formal design with divided traffic lanes, grassy medians, sidewalks, grassy boulevards, and mature trees such as American elm and spruce. Gemini recommends that the National Register eligibility of the *entire parkway*

be evaluated and that all Mn/DOT activities regarding the Fond du Lac Culvert also take into account preservation of the six-block parkway.

Split Rock Lighthouse Overlook LA-BBT-023 1A

After 1998 Gemini Research learned that the ***Split Rock Lighthouse Overlook*** wall was not built in 1948, as Gemini stated on the inventory form, but more likely in the early 1950s. Further research is needed to determine the exact year. Despite the apparent change in age, Split Rock is still an example of a roadside development property that was built shortly after the New Deal and has a design directly inspired by it. It remains eligible for the National Register.

Thompson Hill Overlook SL-DUL-2431 1A

Both the inventory form for the ***Thompson Hill Overlook*** and the 1998 report state that the overlook wall is the longest wall in the inventory and measures approximately 440' long. This is an error – the Thompson Hill Overlook wall is approximately 1,100' long. It remains the longest wall recorded in the inventory.

Orr Roadside Parking Area SL-ORC-005 1B

Gemini conducted additional research on ***Orr Roadside Parking Area*** to prepare a National Register nomination for the property. Based on this research and additional fieldwork, Gemini learned that the property is larger than indicated on the 1998 inventory form (about 10 acres) and includes land on the eastern side of the highway (as well as on the west as indicated on the form). East of the highway are a foot path and a second picnic area that was used for overnight camping. The picnic area includes at least four concrete fireplace bases and a boulder fire ring. What Gemini erroneously identified as concrete lamp pole bases in the western part of the park are concrete fireplace bases. Gemini also learned more about the relationship between the park and the state forestry station adjacent to the north. See the National Register nomination (2001) for maps and updated information.

Camp Ripley Entrance Walls MO-GRE-047 3A

The ***Camp Ripley Entrance Walls*** site has two Control Section numbers because it is located at the intersection of two trunk highways. The inventory form and the 1998 report provide the Control Section number as CS 4908 (for TH 115), but the site is also in CS 4912 (for TH 371). TH 371 is the more well-traveled highway.

Garrison Concourse CW-GRC-001 3A

The inventory form for ***Garrison Concourse*** and the 1998 report both state that two of the inventory's overlook walls project into lakes – the Garrison Concourse and the ***Lake City Concourse***. This is an error – only the Garrison Concourse projects into a lake. The Lake City Concourse is entirely on the shore.

Since 1998, Gemini Research has revised the boundaries of the Garrison Concourse site to encompass the entire designed intersection including traffic islands, granite curbing, and a portion of the shoreline. The revised boundary is based on a better understanding of the original project (designed by the National Park Service and built by the CCC) and how much integrity the site retains. See the Garrison Concourse boundary study (2004) for more information.

On the 1998 inventory form, Gemini did not report the full extent of the granite curbing on the site. In addition to the curbing near the concourse wall and southward along TH 169, there is also considerable granite curbing (some partly buried in turf) that extends along TH 18 northwest of the concourse wall. See the "Garrison Concourse Site Boundaries" aerial map with blue lines indicating granite curbing (Gemini Research 2003). The additional curbing was not discovered until 2003 and was therefore not included in the treatment recommendations for the site prepared by Michael J. Burns Architects (with Gemini Research).

Pine-Hickory Lakes R.P.A.**AK-FIS-017****3A**

After the 1998 inventory, Gemini discovered a set of original plans for ***Pine-Hickory Lakes Roadside Parking Area***. The original plans indicate that the site is larger than described on the 1998 inventory form and that it contains several more standing structures. In subsequent fieldwork Gemini confirmed that another stone council ring, a small concrete dam, a stone fireplace, a stone refuse container, and a concrete highway bridge (Bridge 3911) still exist, in addition to the features described on the inventory form. (See the treatment report for Pine-Hickory Lakes Roadside Parking Area for more information.) The extent of the park's development and the integrity of the larger site make Pine-Hickory even more important than originally indicated.

The original plans are signed by A. R. Nichols, confirming that he is the designer. On the inventory form and in the 1998 report the site is only attributed to Nichols with no confirmation.

Lake City Concourse**WB-LKC-093****6A**

The inventory form for ***Lake City Concourse*** and the 1998 report both erroneously state that the Lake City Concourse projects into Lake Pepin. The overlook wall is entirely on the shore and does not project into the lake. (The ***Garrison Concourse*** is the only overlook wall in the inventory that projects into a lake.)

New Ulm Spring R.P.A.**NL-CTT-006****7B**

On the 1998 inventory form, Gemini did not report that the following features at ***New Ulm Spring Roadside Parking Area*** are extant: two stone fireplaces, a stone check dam, and two brick and concrete spring boxes. These structures were built in the woods above the spring enclosure wall and were located by HDR Engineering during fieldwork to prepare treatment recommendations for the site.

Granite Falls Overlook**YM-GRN-078****8B**

In 2002, Gemini Research learned that the ***Granite Falls Overlook*** was designed and built as part of a larger effort to redesign and improve the city of Granite Falls' adjacent park called World War Memorial Park (which is also eligible for the National Register). Memorial Park has extensive stone features that, like the overlook, are built of native stone. The Minnesota Department of Highways was involved in building both the park and the overlook. For more information, see *Phase I and II (Identification and Evaluation) Investigation of Historic Structures Associated with the Memorial Park Trail Project in Granite Falls, Yellow Medicine County, Minnesota* (Granger et al 2002).

Marine on St. Croix R.P.A.**WA-MXC-015****Met E**

On the 1998 inventory form, Gemini Research incorrectly defined the northern boundary of ***Marine on St. Croix Roadside Parking Area*** as Maple Street. Instead, the park is bisected by Maple Street (an east-west local street) and includes a parcel of land north of Maple. Standing in this northern parcel is a structure not recorded on the inventory form, a wooden gazebo.

Christmas Lake R.P.A.**HE-SHC-022****Met W**

Christmas Lake Roadside Parking Area is in the city of Shorewood, not in the city of Minnetonka as reported on the inventory form. The SHPO has assigned a new SHPO inventory number to reflect this correction. That number is HE-SHC-022, rather than HE-MKC-065 as originally assigned.

After the 1998 inventory, Gemini Research discovered a set of original plans for the Christmas Lake Roadside Parking Area. The plans are signed by A. R. Nichols, confirming that he is the designer. On the inventory form and in the 1998 report the site is only attributed to Nichols with no confirmation.

Graeser Park**HE-RBC-025****Met W**

On the 1998 inventory form, Gemini did not report that the following features at ***Graeser Park*** are extant: a stone stairway leading from Broadway Avenue down into the park (it was buried under turf grass), a small V-shaped retaining wall near the Broadway Avenue inslope (also buried), and the remains of a stone refuse container (hidden in the northeastern spirea hedge). They were discovered during subsequent fieldwork by Gemini to assess the potential effects of the reconstruction of TH 100 on the park.

REVISED NATIONAL REGISTER STATUS

■ REVISED LIST OF NATIONAL REGISTER-LISTED PROPERTIES

The table below is a revised list of properties in the Mn/DOT Historic Roadside Development Structures Inventory that are listed on the National Register or located within a listed National Register site or district. This table takes into account the information on the preceding pages of this report.

Cascade River Wayside ¹	CK-UOG-044	1A	Listed
Fond du Lac Culvert (Bridge 5757)	SL-DUL-2416	1A	Listed
Gooseberry Falls Concourse	LA-SVC-046	1A	On Listed Site ²
Lester River Bridge (Bridge 5772)	SL-DUL-2428	1A	Listed
Orr Roadside Parking Area	SL-ORC-005	1B	Listed
Garrison Ped Underpass (Bridge 5265)	CW-GRC-005	3A	Listed
Vineland Historical Marker	ML-KAN-006	3A	In Listed District ³
Craigie Flour Mill Historical Marker	OT-OTT-001	4A	Listed
Graceville Historical Marker	BS-GRA-017	4B	Listed
Preston Overlook	FL-PRC-041	6A	Listed
Reads Landing Overlook	WB-PEP-012	6A	Listed
Mantorville Retaining Walls	DO-MTC-038	6B	In Listed District ²
Minn State Training School Ent. Walls	GD-RWC-021	6B	On Listed Site ²
Camp Release State Mem Wayside	LP-CAM-003	8B	Listed
Marine on St. Croix R.P.A.	WA-MXC-015	Met E	In Listed District ^{2,3}
Sibley Pioneer Church Monument	DK-MDC-011	Met E	In Listed District ³
St. Croix Boomsite Roadside Prkg Area	WA-SWT-004	Met E	On Listed Site ³
Stillwater Overlook - North	WA-SWT-013	Met E	On Listed Site ³

Correction:
Marine on St. Croix RPA:
superscript = ³

¹Note name change; originally listed in the inventory as Cascade River Overlook.

²Contributing to the eligibility of the site or district.

³Noncontributing to the eligibility of the site or district.

■ REVISED LIST OF NATIONAL REGISTER-ELIGIBLE PROPERTIES

The table below is a revised list of properties in the Mn/DOT Historic Roadside Development Structures Inventory that are eligible for the National Register under the Roadside Development historic context.

Cascade River Wayside ¹	CK-UOG-044	1A	Listed
Fond du Lac Culvert (Bridge 5757)	SL-DUL-2416	1A	Listed
Gooseberry Falls Concourse	LA-SVC-046	1A	On Listed Site ²
Lester River Bridge (Bridge 5772)	SL-DUL-2428	1A	Listed
Split Rock Lighthouse Overlook	LA-BBT-023	1A	
Spruce Creek Culvert (Bridge 8292)	CK-UOG-045	1A	
Orr Roadside Parking Area	SL-ORC-005	1B	Listed

REVISED NATIONAL REGISTER STATUS

Whipholt Roadside Parking Area	CA-PLK-003	2A	
Noyes Roadside Parking Area	KT-SVT-002	2B	
Camp Ripley Entrance Walls	MO-GRE-047	3A	
Garrison Concourse	CW-GRC-001	3A	
Garrison Ped Underpass (Bridge 5265)	CW-GRC-005	3A	Listed
Kenney Lake Overlook	CW-GRT-003	3A	
Pine-Hickory Lakes Roadside Prkg Area	AK-FIS-017	3A	
TH 169 Culvert at St. Alban's Bay	CW-GRT-002	3A	
Vineland Historical Marker	ML-KAN-006	3A	In Listed District ³
Whitefish Creek Bridge (Bridge 3355)	ML-KAN-005	3A	
Willow Lake Roadside Parking Area	CA-TOR-002	3A	
Cold Spring Roadside Parking Area	SN-CSC-024	3B	
St. Cloud Historical Marker	SH-SCC-048	3B	
Craigie Flour Mill Historical Marker	OT-OTT-001	4A	Listed
Otter Tail City Historical Marker	OT-OTC-004	4A	
Pelican Rapids Village Hist Marker	OT-PRC-021	4A	
Browns Valley Historical Marker	TR-FOL-006	4B	
Glenwood Overlook	PO-GLC-022	4B	Ownrshp Transferred
Graceville Historical Marker	BS-GRA-017	4B	Listed
Kensington Runestone Replica R.P.A.	DL-ALE-067	4B	
Stage Station Historical Marker	DL-OSA-021	4B	
Chatfield Historical Marker	FL-CHC-034	6A	
Inspiration Point Wayside Rest	FL-CRL-011	6A	
LaCrescent Overlook	HU-LCC-009	6A	
Lake City Concourse	WB-LKC-093	6A	
Preston Overlook	FL-PRC-041	6A	Listed
Reads Landing Overlook	WB-PEP-012	6A	Listed
Reno Spring Roadside Parking Area	HU-JEF-007	6A	
Fort Beauharnois Historical Marker	GD-FLC-056	6B	
New Ulm Spring Roadside Prking Area	NL-CTT-006	7B	
Birch Coulee Historical Marker	RN-BCO-004	8A	
Avoca Historical Marker	MU-AVC-010	8B	
Camp Release State Mem Wayside	LP-CAM-003	8B	Listed
Granite Falls Overlook	YM-GRN-078	8B	
Redwood Falls Retaining Wall	RW-RFC-032	8B	
Burns Avenue Overlook	RA-SPC-2927	Met E	
Mendota Overlook	DK-MHC-012	Met E	
Stillwater Overlook - South	WA-OHC-005	Met E	
Taylors Falls Overlook - South	CH-SHT-032	Met E	
Chaska Historical Marker	CR-CKC-057	Met W	
Christmas Lake Roadside Parking Area ⁴	HE-SHC-022	Met W	
National Grange Historical Marker	SH-ERC-029	Met W	
Olson, Floyd B., Memorial Statue	HE-MPC-9013	Met W	
St. Louis Park Roadside Parking Area	HE-SLC-017	Met W	Note: Determined ineligible (2006)

¹Note name change; originally listed in the inventory as Cascade River Overlook.

²Contributing to the eligibility of the site or district.

³Noncontributing to the eligibility of the site or district.

⁴Note change in SHPO inventory number.

■ REVISED LIST OF NATIONAL REGISTER-INELIGIBLE PROPERTIES

The table below is a revised list of properties in the Mn/DOT Historic Roadside Development Structures Inventory that are not eligible for the National Register under the Roadside Development historic context.

Berglund, Ray, Roadside Parking Area	CK-TFT-001	1A	
Big Pine Lake Roadside Parking Area	PN-PLK-006	1A	
Clifton-French River Historical Marker	SL-DUT-002	1A	
Cross River Rest Area	CK-UOG-047	1A	Razed ¹
Fond du Lac Historical Marker	SL-DUL-2429	1A	
Grand Marais Harbor Sea Wall	CK-GMC-029	1A	
New Duluth Overlook	SL-DUL-2430	1A	
Temperance River Roadside Parking Area	CK-UOG-046	1A	
Thompson Hill Overlook	SL-DUL-2431	1A	
Thompson Hill-Skyline Pkwy Ovr	SL-DUL-2468	1A	
Wrenshall Ovr/Veterans' Memor. Ovr	CL-TLK-004	1A	
Pillsbury Mine Overlook	SL-BAL-004	1B	
Soudan Roadside Parking Area	SL-SOC-001	1B	
Spang Spring Roadside Parking Area	IC-SPG-004	1B	Razed ¹
Baudette Rest Area	LW-BDC-030	2A	
Garrison Creek Culvert (Bridge 5266)	CW-GRC-006	3A	
Garrison Rest Area	CW-GRT-001	3A	
Hewitt Roadside Parking Area	TO-HEW-012	3A	
Long Lake Roadside Parking Area	CW-NSC-004	3A	
Babcock Memorial Park	SH-ERC-028	3B	
Dickinson Spring Roadside Prking Area	WR-RKT-006	3B	Razed ¹
Dustin Memorial Wayside	WR-MDL-004	3B	Razed ¹
Maine Prairie Corners Hist Marker	SN-MPR-004	3B	
Detroit Lakes Overlook	BK-DLC-157	4A	
Leaf City Historical Marker	OT-LLT-001	4A	
Minnesota Woman Roadside Parkng Area	OT-PEL-001	4A	
Pomme de Terre Roadside Parking Area	SW-MOY-007	4B	
Silver Lake Roadside Parking Area	OL-ROC-105	6A	
Wabasha Overlook	WB-WBC-183	6A	
Frontenac R.P.A./Maiden Rock	GD-FLC-054	6B	
Frontenac State Park Gates	GD-FLC-057	6B	
Mantorville Retaining Walls ²	DO-MTC-038	6B	
Minn State Training School Entr Walls ²	GD-RWC-021	6B	
Red Wing Roadside Parking Area	GD-RWC-849	6B	
Mapleton Historical Marker	BE-MPC-031	7A	
Victory Memorial Rest Area	BE-DEC-008	7A	
Morton Pioneer Monuments R.P.A.	RN-BFS-002	8A	
Pipestone Nat Monu Entr. Marker	PP-PPC-154	8B	
Bolles Mill Historical Marker	WA-AFC-035	Met E	Ownrshp Transferred
Indian Battle Ground Hist. Marker	WA-SWC-713	Met E	Ownrs Trans, Razed ¹
Marine on St. Croix R.P.A. ²	WA-MXC-015	Met E	

REVISED NATIONAL REGISTER STATUS

Mendota Granite Arrow Marker	DK-MDC-010	Met E	
Pine Bend Historical Marker	DK-IVG-023	Met E	Being razed ¹
Point Douglas Road Retaining Wall	RA-SPC-2928	Met E	
St. Croix Boomsite Roadside Prkng Area ²	WA-SWT-004	Met E	
Sibley Pioneer Church Monument ²	DK-MDC-011	Met E	
Stillwater Overlook - North ²	WA-SWT-013	Met E	
Stillwater Retaining Wall	WA-SWC-1205	Met E	
Tamarack House Historical Marker	WA-SWC-714	Met E	
Taylors Falls Overlook - North	CH-TFC-055	Met E	
Blazer Park	HE-GVC-047B	Met W	Razed ¹
Daytonport Roadside Parking Area	AN-RMC-008	Met W	
Graeser Park	HE-RBC-025	Met W	
Graeser Park - South	HE-RBC-160	Met W	Razed ¹
Lilac Park	HE-SLC-013	Met W	To be razed ¹
Mill Pond Roadside Parking Area	SC-SPC-069	Met W	Ownrshp Transferred
TH 55 Retaining Wall	HE-GVC-052	Met W	
TH 100 at TH 55 Retaining Walls	HE-GVC-053	Met W	Razed ¹
TH 100 Culvert (Bridge 5442)	HE-GVC-051	Met W	Razed ¹

Addition: St. Louis Park R.P.A. (determined ineligible in 2006)

¹Fully or partly demolished.

²On a listed site or in a listed district.

RECOMMENDATIONS

■ RESEARCH NATIONAL SIGNIFICANCE

It is recommended that Mn/DOT conduct the additional research necessary to determine the significance of its collection of historic roadside development properties within a nationwide context. Charles Birnbaum, FASLA, coordinator of the National Park Service's Historic Landscape Initiative, has indicated informally that he believes Minnesota's collection of sites to be nationally important. Assessing Minnesota's collection on a national scale will both help Mn/DOT understand further the significance of the collection and help Mn/DOT leverage support (both public and private) for preservation, critical repair, and rehabilitation.

■ ADD STATE LINE MARKERS TO THE INVENTORY

It is recommended that Mn/DOT add the approximately 16 state line markers discussed in Appendix K of the 1998 report to the inventory. These properties are part of Mn/DOT's collection of historic roadside development properties but have not thus far been added to the inventory because of budget limitations. (The sites had been repaired in the mid-1990s and their National Register eligibility evaluated by the State Historic Preservation Office at that time. Because of this recent work, Mn/DOT chose not to include them in the 1998 inventory so resources could be concentrated on lesser-known properties.) In addition to adding the state line markers to the inventory, Mn/DOT should include them in all management plans. The sites should also be included in research on national significance (see above) that compares Minnesota's roadside development sites to those of other states.

■ CONTINUE NATIONAL REGISTER NOMINATIONS

It is recommended that Mn/DOT continue to pursue the nomination of historic roadside development properties to the National Register of Historic Places. National Register designation helps raise public awareness of, and support for, the preservation of historic properties, may increase the likelihood of special funding and grants for repair or rehabilitation, and gives properties the protection of State Historic Preservation Office review and technical assistance when changes are contemplated during state-funded activities.

■ RESEARCH 1960s-ERA PROPERTIES

It is recommended that Mn/DOT conduct additional research between the years 2010 and 2015 to inventory and evaluate the Minnesota Highway Department roadside development properties that were built in the late 1950s and 1960s. This research should address the impact of the Federal Highway Beautification Act of 1965, the environmental movement, and the design and construction of early interstate highways.

■ SHARE INFORMATION WITH LOCAL GOVERNMENTS

It is recommended that Mn/DOT share its inventory and contextual information with local units of government, particularly when a site is located within municipal limits. In many cases local governments do not realize the significance of the properties and may be potential partners in their care. It is also recommended that Mn/DOT share historic context information with local governments that own an historic property that was built by the MHD as part of its early roadside program but was transferred to the local government before 1998 (and therefore not included in the inventory). For example, important historic roadside development structures designed by A. R. Nichols and built by the MHD and New Deal federal relief agencies stand outside of current right-of-way in St. Joseph, Cambridge, Eden Prairie, South St. Paul, Grand Marais, rural Redwood County, and in several other locations.



Fig 1. Council ring, Hewitt Roadside Parking Area, 1942. Courtesy Marvel Blaske.



Fig 2. Spring enclosure, Hewitt Roadside Parking Area, April 2003.



Fig 3. Stone table, Hewitt Roadside Parking Area, April 2003.



Fig 4. LaCrescent Overlook, Jan. 2003.



Fig. 5. Flagpole and plaza, Noyes Roadside Parking Area, April 2003.



Fig. 6. Pipestone National Monument Entrance Marker, Oct. 2002.

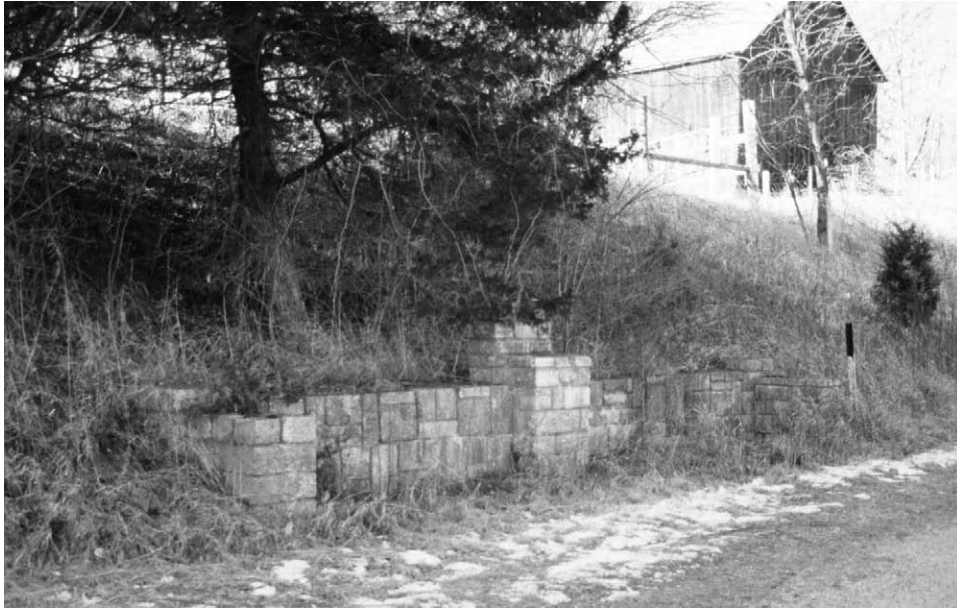


Fig. 7. Reno Spring Roadside Parking Area, Jan. 2003.



Fig. 8. Stillwater Retaining Wall, Nov. 2002.

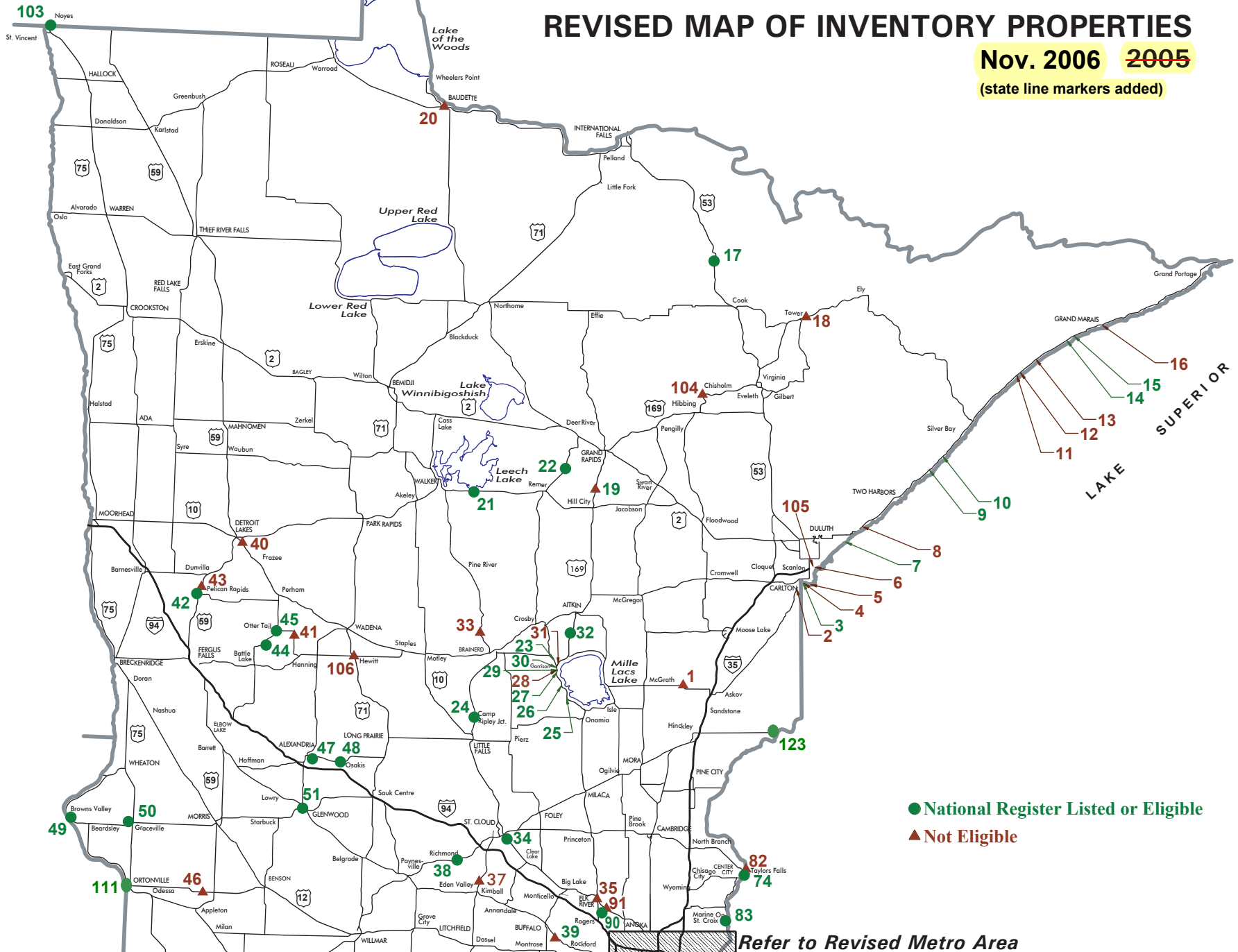


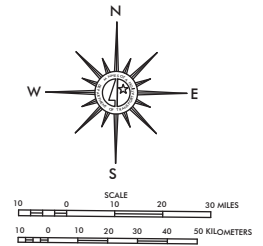
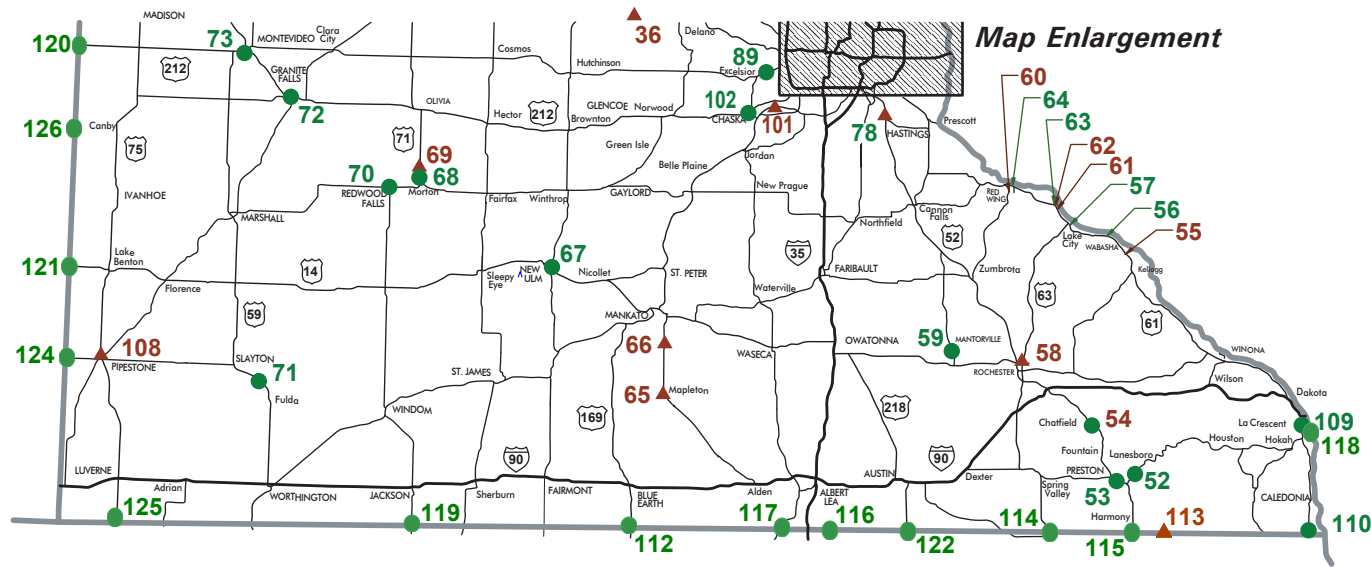
Fig. 9. *Thompson Hill-Skyline Parkway Overlook, Oct. 2003.*

REVISED MAP OF INVENTORY PROPERTIES

Nov. 2006 ~~2005~~

(state line markers added)



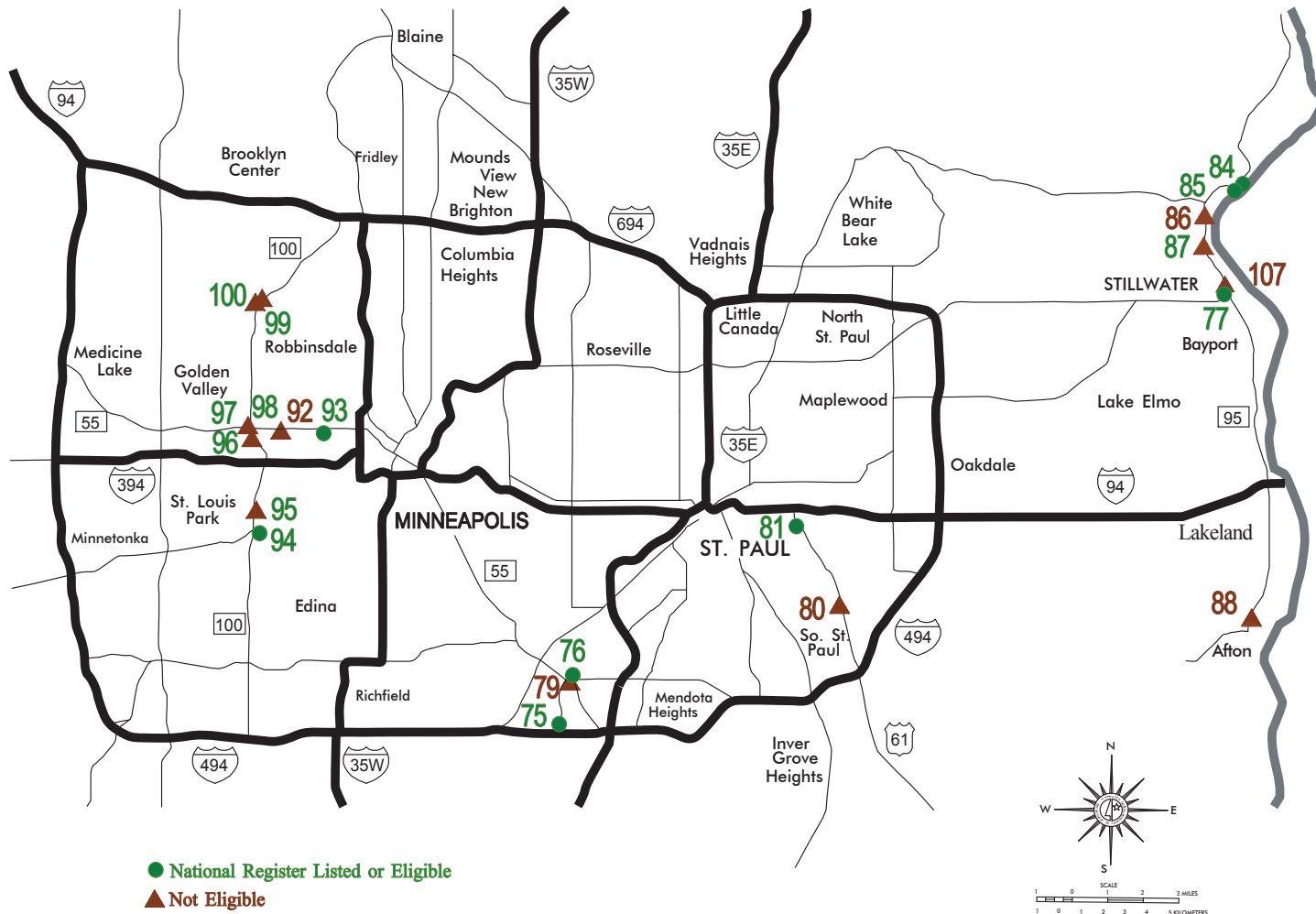


- | | | | |
|--|---|---|--|
| ▲ 1 Big Pine Lake Roadside Parking Area | ▲ 31 Garrison Creek Culvert (Bridge 5266) | ▲ 61 Frontenac R.P.A./Maiden Rock | ▲ 91 Daytonport Roadside Parking Area |
| ▲ 2 Wrenshall Overlook/Veterans' Memorial Overlook | ● 32 Pine-Hickory Lakes Roadside Parking Area | ▲ 62 Frontenac State Park Gates | ▲ 92 TH 55 Retaining Wall |
| ● 3 Fond du Lac Culvert (Bridge 5757) | ▲ 33 Long Lake Roadside Parking Area | ● 63 Fort Beauharnois Historical Marker | ● 93 Olson, Floyd B., Memorial Statue |
| ▲ 4 Fond du Lac Historical Marker | ● 34 St. Cloud Historical Marker | ● 64 Minn State Training School Ent. Walls | ● 94 St. Louis Park Roadside Parking Area (Ineligible in 2006) |
| ▲ 5 New Duluth Overlook | ▲ 35 Babcock Memorial Park | ▲ 65 Mapleton Historical Marker | ▲ 95 Lilac Park |
| ▲ 6 Thompson Hill Overlook | ▲ 36 Dustin Memorial Wayside | ▲ 66 Victory Memorial Rest Area | ▲ 96 TH 100 Culvert (Bridge 5442) |
| ● 7 Lester River Bridge (Bridge 5772) | ▲ 37 Maine Prairie Corners Historical Marker | ● 67 New Ulm Spring Roadside Parking Area | ▲ 97 Blazer Park |
| ▲ 8 Clifton-French River Historical Marker | ● 38 Cold Spring Roadside Parking Area | ● 68 Birch Coulee Historical Marker | ▲ 98 TH 100 at TH 55 Retaining Walls |
| ● 9 Gooseberry Falls Concourse | ▲ 39 Dickinson Spring Roadside Parking Area | ▲ 69 Morton Pioneer Monuments R.P.A. | ▲ 99 Graeser Park - South |
| ● 10 Split Rock Lighthouse Overlook | ▲ 40 Detroit Lakes Overlook | ● 70 Redwood Falls Retaining Wall | ▲ 100 Graeser Park |
| ▲ 11 Cross River Rest Area | ▲ 41 Leaf City Historical Marker | ● 71 Avoca Historical Marker | ▲ 101 Mill Pond Roadside Parking Area |
| ▲ 12 Temperance River Roadside Parking Area | ● 42 Pelican Rapids Village Historical Marker | ● 72 Granite Falls Overlook | ● 102 Chaska Historical Marker |
| ▲ 13 Berglund, Ray, Roadside Parking Area | ▲ 43 Minnesota Woman Roadside Parking Area | ● 73 Camp Release State Memorial Wayside | ● 103 Noyes Roadside Parking Area |
| ● 14 Spruce Creek Culvert (Bridge 8292) | ● 44 Craigie Flour Mill Historical Marker | ● 74 Taylors Falls Overlook - South | ▲ 104 Pillsbury Mine Overlook |
| ● 15 Cascade River Overlook | ● 45 Otter Tail City Historical Marker | ● 75 Mendota Overlook | ▲ 105 Thompson Hill-Skyline Pkwy Overlook |
| ▲ 16 Grand Marais Harbor Sea Wall | ▲ 46 Pomme de Terre Roadside Parking Area | ● 76 Sibley Pioneer Church Monument | ▲ 106 Hewitt Roadside Parking Area |
| ● 17 Orr Roadside Parking Area | ● 47 Kensington Runestone Replica R.P.A. | ● 77 Stillwater Overlook - South | ▲ 107 Stillwater Retaining Wall |
| ▲ 18 Soudan Roadside Parking Area | ● 48 Stage Station Historical Marker | ▲ 78 Pine Bend Historical Marker | ▲ 108 Pipestone Nat. Mon. Entrance Marker |
| ▲ 19 Spang Spring Roadside Parking Area | ● 49 Browns Valley Historical Marker | ▲ 79 Mendota Granite Arrow Marker | ● 109 LaCrescent Overlook |
| ▲ 20 Baudette Rest Area | ● 50 Graceville Historical Marker | ▲ 80 Point Douglas Road Retaining Wall | ● 110 Reno Spring Roadside Parking Area |
| ● 21 Whipholt Roadside Parking Area | ● 51 Glenwood Overlook | ● 81 Burns Avenue Overlook | 111-126 See State Line Marker information below |
| ● 22 Willow Lake Roadside Parking Area | ● 52 Inspiration Point Wayside Rest | ▲ 82 Taylors Falls Overlook - North | |
| ● 23 Kenney Lake Overlook | ● 53 Preston Overlook | ● 83 Marine on St. Croix R.P.A. | |
| ● 24 Camp Ripley Entrance Walls | ● 54 Chatfield Historical Marker | ● 84 St. Croix Boonsite Roadside Parking Area | |
| ● 25 Vineland Historical Marker | ▲ 55 Wabasha Overlook | ● 85 Stillwater Overlook - North | |
| ● 26 Whitefish Creek Bridge (Bridge 3355) | ● 56 Reads Landing Overlook | ▲ 86 Tamarack House Historical Marker | |
| ● 27 TH 169 Culvert at St. Alban's Bay | ● 57 Lake City Concourse | ▲ 87 Indian Battle Ground Historical Marker | |
| ▲ 28 Garrison Rest Area | ▲ 58 Silver Lake Roadside Parking Area | ▲ 88 Bolles Mill Historical Marker | |
| ▲ 29 Garrison Ped Underpass (Bridge 5265) | ● 59 Mantorville Retaining Walls | ● 89 Christmas Lake Roadside Parking Area | |
| ● 30 Garrison Concourse | ▲ 60 Red Wing Roadside Parking Area | ● 90 National Grange Historical Marker | |

Site fully or partially razed

See Metro Area Map Enlargement for sites
75-77, 79-81, 84-88, 92-100, 107

REVISED METRO AREA MAP ENLARGEMENT



State Line Markers on Minnesota Trunk Highways

	Map	Trunk	Nearby		Year		National
	No.	Hwy.	City	County	Built	Builder	Register Eligible
●	111	12	Ortonville	Big Stone	1942	WPA	Yes
●	112	169	Elmore	Faribault		NYA	Yes
▲	113	52	Prosper	Fillmore	1941	NYA	No
●	114	63	Chester	Fillmore		NYA	Yes
●	115	139	Harmony	Fillmore		NYA	Yes
●	116	65	Gordonsville	Freeborn	1941	NYA	Yes
●	117	69	Emmons	Freeborn		NYA	Yes
●	118	61	LaCrescent	Houston	1943	Maint. Lab	Yes
●	119	71	Jackson	Jackson		NYA	Yes
●	120	212	Dawson	Lac qui Parle		NYA	Yes
●	121	14	Lake Benton	Lincoln		NYA	Yes
●	122	218	Lyle	Mower		NYA	Yes
●	123	48	Hinckley	Pine		NYA *	Yes
●	124	30	Pipestone	Pipestone		NYA	Yes
●	125	75	Luverne	Rock	1941-42	NYA	Yes
●	126	68	Canby	Yellow Medicine		NYA	Yes

* This site may have been built by the CCC.

NOTE: There are two additional state line markers believed to have been demolished prior to the historic roadside development structures research began: one marker on TH 15 in Mower County and one on TH 60 in Nobles County.

REFERENCES ADDITIONAL TO THOSE IN THE 1998 REPORT

■ GENERAL SOURCES

Anderson, Rolf T. "Federal Relief Construction in Minnesota, 1933-1941." National Register of Historic Places Multiple Property Documentation Form. Oct. 9, 1990; amended by Anderson Aug. 30, 1993; **amended by Gemini Research 2002.** [Note 2002 amendment.]

Anderson, Rolf T. "Innovative Program Undertaken by Minnesota Department of Transportation Documents and Evaluates Historic Roadside Landscape Features." *Vineyard* [Historic Landscape Initiative of the National Park Service], vol. 3 (2001): 9-11.

Anderson, Rolf T, with Liz Walton and Gemini Research. "New Deal Roadside Landscape Features." *Cultural Landscape Currents*, vol. 6 (2004). Historic Landscape Initiative of the National Park Service. <http://www2.cr.nps.gov/hli/currents/index.htm>

Birnbaum, Charles A., with Christine Capella Peters. *The Secretary of the Interior's Standards for the Treatment of Historic Properties with Guidelines for the Treatment of Cultural Landscapes*. Washington, DC: U.S. Department of the Interior, National Park Service Cultural Resource Stewardship and Partnerships Heritage Preservation Services, Historic Landscape Initiative, 1996.

Carr, Ethan. *Wilderness by Design: Landscape Architecture and the National Park Service*. Lincoln: Univ. of Nebraska Press, 1998.

Kopischke, Gregory. "Morell, Anthony Urbanski." In *Pioneers of American Landscape Design*. Ed. Charles A. Birnbaum and Robin Karson. New York: McGraw-Hill, 2000.

Kopischke, Gregory. "Nichols, Arthur Richardson." In *Pioneers of American Landscape Design*. Ed. Charles A. Birnbaum and Robin Karson. New York: McGraw-Hill, 2000.

Long, Barbara Beving. *Phase III Historical Mitigation: T.H. 61 in Gooseberry Falls State Park and Bridge No. 3585*. Prepared for Mn/DOT by Rivercrest Associates. Sept. 1996.

McClelland, Linda Flint. *Building the National Parks*. Baltimore: Johns Hopkins Univ. Press, 1998.

■ Mn/DOT REPORTS

Granger, Susan, and Scott Kelly. *Draft Historic Preservation Plan for the Cold Spring Roadside Parking Area, Cold Spring, Minnesota*. Submitted to Mn/DOT by Gemini Research. January 2002 [Draft].

Granger, Susan, Scott Kelly, and Kay Grossman. *Evaluation of the National Register Eligibility of Stone Culverts on T.H. 74, Whitewater State Park, Winona County, Minnesota [S.P. 7909-02]*. Submitted to Mn/DOT by Gemini Research. Dec. 26, 2000. [Includes impressive Rustic Style stone culverts and flumes.]

REFERENCES

Granger, Susan, Scott Kelly, and Kay Grossman. *Historic Roadside Development Structures on Minnesota Trunk Highways*. Prepared for Mn/DOT by Gemini Research. Dec. 1998.

Granger, Susan, Scott Kelly, and Kay Grossman. *Phase I and II (Identification and Evaluation) Investigation of Historic Structures Along T.H. 52 Near Preston and Fountain in Fillmore County, Minnesota [S.P. 2310-22]*. Submitted to Mn/DOT by Gemini Research. Aug. 28, 2001. [Includes **Preston Overlook** and an MHD Retaining Wall at Fountain.]

Granger, Susan, Scott Kelly, and Kay Grossman. *Phase I and II (Identification and Evaluation) Investigation of Historic Structures Associated with the Memorial Park Trail Project in Granite Falls, Yellow Medicine County, Minnesota [S.P. 87-090-01]*. Submitted to Mn/DOT and Yellow Medicine County by Gemini Research. Nov. 26, 2002. [Includes **Granite Falls Overlook**.]

Granger, Susan, Scott Kelly, and Kay Grossman. *Phase II (Evaluation) Investigation of Historic Structures Along T.H. 169 on the Western Shore of Mille Lacs Lake (S.P. 1804-50)*. Submitted to Mn/DOT by Gemini Research. Aug. 28, 2001. [Includes **Garrison Concourse**, **Garrison Ped. Underpass (Bridge 5265)**, **Garrison Rest Area**, **TH 169 Culvert at St. Alban's Bay**, **Vineland Historical Marker**, and **Whitefish Creek Bridge (Bridge 3355)**.]

Granger, Susan, Scott Kelly, and Kay Grossman. *Supplement One (North Half of Corridor), Phase I and II Identification and Evaluation of Historic Structures in the T.H. 169 Corridor Near the Western Shore of Mille Lacs Lake (S.P. 1804-50)*. Submitted to Mn/DOT by Gemini Research. Sept. 15, 2003. [Includes **Kenney Lake Overlook**.]

Granger, Susan, and Scott Kelly. *Phase I Standing Structures Survey Along T.H. 169 on the Western Shore of Mille Lacs Lake (S.P. 1804-50)*. Submitted to Mn/DOT by Gemini Research. March 15, 2000. [Includes **Garrison Concourse**, **Garrison Ped. Underpass (Bridge 5265)**, **Garrison Rest Area**, **TH 169 Culvert at St. Alban's Bay**, **Vineland Historical Marker**, and **Whitefish Creek Bridge (Bridge 3355)**.]

Granger, Susan, and Scott Kelly. *The Potential Effect of S.P. 2735-159 on Graeser Park in Robbinsdale (T.H. 100)*. Submitted to Mn/DOT by Gemini Research. Feb. 7, 2001.

Granger, Susan, and Scott Kelly. *Potential Effects on Historic Structures From the T.H. 169 Mill and Overlay, By-pass and Turn lanes Project (S.P. 1804-48)*. Submitted to Mn/DOT by Gemini Research. Nov. 15, 1999. [Includes **Garrison Concourse**, **Garrison Ped. Underpass (Bridge 5265)**, **TH 169 Culvert at St. Alban's Bay**, **Vineland Historical Marker**, and **Whitefish Creek Bridge (Bridge 3355)**.]

■ Mn/DOT BOUNDARY STUDIES

Boundary studies were prepared by Gemini Research in 2004 for the sites listed below. These studies, which include aerial photographs, are housed in the Mn/DOT Site Development Unit.

Cascade River Wayside	CK-UOG-044	1A
Fond du Lac Culvert (Bridge 5757)	SL-DUL-2416	1A
Gooseberry Falls Concourse	LA-SVC-046	1A
Hinckley State Line Marker	PN-OGM-004	1A

Lester River Bridge (Bridge 5772)	SL-DUL-2428	1A
Split Rock Lighthouse Overlook	LA-BBT-023	1A
Spruce Creek Culvert (Bridge 8292)	CK-UOG-045	1A
Orr Roadside Parking Area	SL-ORC-005	1B
Whipholt Roadside Parking Area	CA-PLK-003	2A
Noyes Roadside Parking Area	KT-SVT-002	2B
Camp Ripley Entrance Walls	MO-GRE-047	3A
Garrison Concourse	CW-GRC-001	3A
Garrison Ped Underpass (Bridge 5265)	CW-GRC-005	3A
Kenney Lake Overlook	CW-GRT-003	3A
Pine-Hickory Lakes Roadside Prkg Area	AK-FIS-017	3A
TH 169 Culvert at St. Alban's Bay	CW-GRT-002	3A
Vineland Historical Marker	ML-KAN-006	3A
Whitefish Creek Bridge (Bridge 3355)	ML-KAN-005	3A
Willow Lake Roadside Parking Area	CA-TOR-002	3A
Cold Spring Roadside Parking Area	SN-CSC-024	3B
St. Cloud Historical Marker	SH-SCC-048	3B
Craigie Flour Mill Historical Marker	OT-OTT-001	4A
Otter Tail City Historical Marker	OT-OTC-004	4A
Pelican Rapids Village Hist Marker	OT-PRC-021	4A
Browns Valley Historical Marker	TR-FOL-006	4B
Graceville Historical Marker	BS-GRA-017	4B
Stage Station Historical Marker	DL-OSA-021	4B
Chatfield Historical Marker	FL-CHC-034	6A
Inspiration Point Wayside Rest	FL-CRL-011	6A
LaCrescent Overlook	HU-LCC-009	6A
Lake City Concourse	WB-LKC-093	6A
Preston Overlook	FL-PRC-041	6A
Reads Landing Overlook	WB-PEP-012	6A
Reno Spring Roadside Parking Area	HU-JEF-007	6A
Fort Beauharnois Historical Marker	GD-FLC-056	6B
Mantorville Retaining Walls	DO-MTC-038	6B
Minn State Training School Ent. Walls	GD-RWC-021	6B
New Ulm Spring Roadside Prking Area	NL-CTT-006	7B
Birch Coulee Historical Marker	RN-BCO-004	8A
Avoca Historical Marker	MU-AVC-010	8B
Camp Release State Mem Wayside	LP-CAM-003	8B
Granite Falls Overlook	YM-GRN-078	8B
Redwood Falls Retaining Wall	RW-RFC-032	8B
Burns Avenue Overlook	RA-SPC-2927	Met E
Marine on St. Croix R.P.A.	WA-MXC-015	Met E
Sibley Pioneer Church Monument	DK-MDC-011	Met E
St. Croix Boomsite Roadside PrkgArea	WA-SWT-004	Met E
Stillwater Overlook - South	WA-OHC-005	Met E
Stillwater Overlook - North	WA-SWT-013	Met E
Taylors Falls Overlook - South	CH-SHT-032	Met E
Chaska Historical Marker	CR-CKC-057	Met W
Christmas Lake Roadside Parking Area	HE-SHC-022	Met W

REFERENCES

National Grange Historical Marker	SH-ERC-029	Met W
Olson, Floyd B., Memorial Statue	HE-MPC-9013	Met W
St. Louis Park Roadside Parking Area	HE-SLC-017	Met W

■ NEW NATIONAL REGISTER NOMINATIONS

National Register nominations were prepared in 2001-2003 by Gemini Research for the sites listed below. (See individual nomination forms for names of authors and dates.) Copies are available in the Mn/DOT Site Development Unit and in the State Historic Preservation Office (SHPO).

Cascade River Wayside	CK-UOG-044	1A
Hinckley State Line Marker	PN-OGM-004	1A
Lester River Bridge (Bridge 5772)	SL-DUL-2428	1A
Orr Roadside Parking Area	SL-ORC-005	1B
Craigie Flour Mill Historical Marker	OT-OTT-001	4A
Graceville Historical Marker	BS-GRA-017	4B
Preston Overlook	FL-PRC-041	6A
Reads Landing Overlook	WB-PEP-012	6A
also:		
Hinckley State Line Marker	PN-OGM-004	1A

■ Mn/DOT REHABILITATION CONSTRUCTION PLANS

Construction plans were prepared in 2002-2005 for rehabilitation work at the sites listed below. (See individual plans for names of designers and dates.) Plans are housed in the Mn/DOT Site Development Unit.

Gooseberry Falls Concourse	LA-SVC-046	1A
Orr Roadside Parking Area	SL-ORC-005	1B
Cold Spring Roadside Parking Area	SN-CSC-024	3B
Craigie Flour Mill Historical Marker	OT-OTT-001	4A
Reads Landing Overlook	WB-PEP-012	6A

■ Mn/DOT TREATMENT REPORTS

Historic preservation treatment reports were prepared in 2001-2004 by various authors for the sites listed below. These reports assess the physical condition of the properties and recommend preservation and rehabilitation strategies. (See individual treatment reports for names of authors and dates.) Treatment reports are on file in the Mn/DOT Site Development Unit.

Burns, Michael J., Architects (with Gemini Research)

Orr Roadside Parking Area	SL-ORC-005	1B
Soudan Roadside Parking Area	SL-SOC-001	1B

Whipholt Roadside Parking Area	CA-PLK-003	2A
Camp Ripley Entrance Walls	MO-GRE-047	3A
Garrison Concourse	CW-GRC-001	3A
Garrison Ped Underpass (Bridge 5265)	CW-GRC-005	3A
Kenney Lake Overlook	CW-GRT-003	3A
Pine-Hickory Lakes Roadside Prkg Area	AK-FIS-017	3A
TH 169 Culvert at St. Alban's Bay	CW-GRT-002	3A
Vineland Historical Marker	ML-KAN-006	3A
Whitefish Creek Bridge (Bridge 3355)	ML-KAN-005	3A
Willow Lake Roadside Parking Area	CA-TOR-002	3A
Cold Spring Roadside Parking Area	SN-CSC-024	3B
St. Cloud Historical Marker	SH-SCC-048	3B
Craigie Flour Mill Historical Marker	OT-OTT-001	4A
Otter Tail City Historical Marker	OT-OTC-004	4A
Pelican Rapids Village Hist Marker	OT-PRC-021	4A
Browns Valley Historical Marker	TR-FOL-006	4B
Glenwood Overlook	PO-GLC-022	4B
Graceville Historical Marker	BS-GRA-017	4B
Kensington Runestone Replica R.P.A.	DL-ALE-067	4B
Stage Station Historical Marker	DL-OSA-021	4B
Burns Avenue Overlook	RA-SPC-2927	Met E
Marine on St. Croix R.P.A.	WA-MXC-015	Met E
St. Croix Boomsite Roads Prkg Area	WA-SWT-004	Met E
Stillwater Retaining Wall	WA-SWC-1205	Met E
Stillwater Overlook - South	WA-OHC-005	Met E
Taylor's Falls Overlook - South	CH-SHT-032	Met E
St. Louis Park Roadside Parking Area	HE-SLC-017	Met W

HDR Engineering, Inc.

Inspiration Point Wayside Rest	FL-CRL-011	6A
Lake City Concourse	WB-LKC-093	6A
Preston Overlook	FL-PRC-041	6A
Reads Landing Overlook	WB-PEP-012	6A
Fort Beauharnois Historical Marker	GD-FLC-056	6B
Mantorville Retaining Walls	DO-MTC-038	6B
Minn State Training School Ent. Walls	GD-RWC-021	6B
New Ulm Spring Roadside Prking Area	NL-CTT-006	7B

Oertel Architects

Dickinson Spring Roadside Prking Area	WR-RKT-006	3B
Birch Coulee Historical Marker	RN-BCO-004	8A
Avoca Historical Marker	MU-AVC-010	8B
Camp Release State Mem Wayside	LP-CAM-003	8B
Granite Falls Overlook	YM-GRN-078	8B
Redwood Falls Retaining Wall	RW-RFC-032	8B

REFERENCES

Mendota Overlook	DK-MHC-012	Met E
Sibley Pioneer Church Monument	DK-MDC-011	Met E
Chaska Historical Marker	CR-CKC-057	Met W
Christmas Lake Roadside Parking Area	HE-SHC-022	Met W
National Grange Historical Marker	SH-ERC-029	Met W

Sanders Wacker Bergly Inc.

Pine Bend Historical Marker	DK-IVG-023	Met E
Graeser Park	HE-RBC-025	Met W
Olson, Floyd B., Memorial Statue	HE-MPC-9013	Met W

SMSQ Architects

Cascade River Wayside	CK-UOG-044	1A
Fond du Lac Culvert (Bridge 5757)	SL-DUL-2416	1A
Gooseberry Falls Concourse	LA-SVC-046	1A
Lester River Bridge (Bridge 5772)	SL-DUL-2428	1A
Split Rock Lighthouse Overlook	LA-BBT-023	1A
Spruce Creek Culvert (Bridge 8292)	CK-UOG-045	1A

■ RECOMMENDATIONS FOR INELIGIBLE PROPERTIES

Most of the treatment reports and boundary studies listed above were prepared for sites that are listed on, or eligible for, the National Register. Mn/DOT also requested that Gemini Research prepare brief recommendations for inventory properties that are not listed or eligible. These recommendations are on file in the Mn/DOT Site Development Unit.

**APPENDIX A: MN/DOT HISTORIC ROADSIDE DEVELOPMENT STRUCTURES
INVENTORY OF 110 PROPERTIES ORDERED BY MN/DOT CONTROL SECTION**

Control Section	Trunk Hwy	Site Name	SHPO Inventory #
0115	TH 169	Pine-Hickory Lakes Roadside Parking Area	AK-FIS-017
0202	TH 10/169	Daytonport Roadside Parking Area	AN-RMC-008
0302	TH 10	Detroit Lakes Overlook	BK-DLC-157
0605	TH 28	Graceville Historical Marker	BS-GRA-017
0703	TH 22	Mapleton Historical Marker	BE-MPC-031
0704	TH 22	Victory Memorial Rest Area	BE-DEC-008
0901	TH 23	Wrenshall Overlook/Veterans' Memorial Ov	CL-TLK-004
1013	TH 212	Chaska Historical Marker	CR-CKC-057
1104	TH 6	Willow Lake Roadside Parking Area	CA-TOR-002
1106	TH 200	Whipholt Roadside Parking Area	CA-PLK-003
1301	TH 8/95	Taylors Falls Overlook - South	CH-SHT-032
1306	TH 95	Taylors Falls Overlook - North	CH-TFC-055
1601	TH 61	Berglund, Ray, Roadside Parking Area	CK-TFT-001
1601	TH 61	Cross River Rest Area	CK-UOG-047
1601	TH 61	Temperance River Roadside Parking Area	CK-UOG-046
1602	TH 61	Cascade River Overlook	CK-UOG-044
1602	TH 61	Grand Marais Harbor Sea Wall	CK-GMC-029
1602	TH 61	Spruce Creek Culvert (Bridge 8292)	CK-UOG-045
1803	TH 18	Kenney Lake Overlook	CW-GRT-003
1804	TH 169	Garrison Concourse	CW-GRC-001
1804	TH 169	Garrison Creek Culvert (Bridge 5266)	CW-GRC-006
1804	TH 169	Garrison Ped Underpass (Bridge 5265)	CW-GRC-005
1804	TH 169	Garrison Rest Area	CW-GRT-001
1804	TH 169	TH 169 Culvert at St. Alban's Bay	CW-GRT-002
1810	TH 371	Long Lake Roadside Parking Area	CW-NSC-004
1901	TH 13	Mendota Overlook	DK-MHC-012
1902	TH 13	Sibley Pioneer Church Monument	DK-MDC-011
1907	TH 52/55	Pine Bend Historical Marker	DK-IVG-023
1909	TH 55/110	Mendota Granite Arrow Marker	DK-MDC-010
2007	TH 57	Mantorville Retaining Walls	DO-MTC-038
2106	TH 27	Kensington Runestone Replica R.P.A.	DL-ALE-067
2106	TH 27	Stage Station Historical Marker	DL-OSA-021
2304	TH 16	Inspiration Point Wayside Rest	FL-CRL-011
2310	TH 52/16	Preston Overlook	FL-PRC-041
2311	TH 52	Chatfield Historical Marker	FL-CHC-034
2510	TH 58	Red Wing Roadside Parking Area	GD-RWC-849
2513	TH 61/63	Fort Beauharnois Historical Marker	GD-FLC-056
2513	TH 61/63	Frontenac R.P.A./Maiden Rock	GD-FLC-054
2513	TH 61/63	Frontenac State Park Gates	GD-FLC-057
2513	TH 61/63	Minn State Training School Ent. Walls	GD-RWC-021

APPENDIX A

2706	TH 7	Christmas Lake Roadside Parking Area	HE-MKC-065
2735	TH 100	Blazer Park	HE-GVC-047B
2735	TH 100	Graeser Park	HE-RBC-025
2735	TH 100	Graeser Park - South	HE-RBC-160
2735	TH 100	Lilac Park	HE-SLC-013
2735	TH 100	St. Louis Park Roadside Parking Area	HE-SLC-017
2735	TH 100	TH 100 at TH 55 Retaining Walls	HE-GVC-053
2735	TH 100	TH 100 Culvert (Bridge 5442)	HE-GVC-051
2751	TH 55	Olson, Floyd B., Memorial Statue	HE-MPC-9013
2752	TH 55	TH 55 Retaining Wall	HE-GVC-052
2802	TH 26	Reno Spring Roadside Parking Area	HU-JEF-007
2805	TH 61/14	LaCrescent Overlook	HU-LCC-009
3115	TH 169	Spang Spring Roadside Parking Area	IC-SPG-004
3509	TH 75	Noyes Roadside Parking Area	KT-SVT-002
3706	TH 212/59	Camp Release State Memorial Wayside	LP-CAM-003
3806	TH 61	Gooseberry Falls Concourse	LA-SVC-046
3806	TH 61	Split Rock Lighthouse Overlook	LA-BBT-023
3905	TH 72	Baudette Rest Area	LW-BDC-030
4814	TH 169	Vineland Historical Marker	ML-KAN-006
4814	TH 169	Whitefish Creek Bridge (Bridge 3355)	ML-KAN-005
4908	TH 115/371	Camp Ripley Entrance Walls	MO-GRE-047
5104	TH 59	Avoca Historical Marker	MU-AVC-010
5202	TH 14	New Ulm Spring Roadside Parking Area	NL-CTT-006
5510	TH 63	Silver Lake Roadside Parking Area	OL-ROC-105
5618	TH 59	Minnesota Woman Roadside Parking Area	OT-PEL-001
5618	TH 59	Pelican Rapids Village Historical Marker	OT-PRC-021
5620	TH 78	Craigie Flour Mill Historical Marker	OT-OTT-001
5621	TH 78	Otter Tail City Historical Marker	OT-OTC-004
5624	TH 108	Leaf City Historical Marker	OT-LLT-001
5808	TH 18	Big Pine Lake Roadside Parking Area	PN-PLK-006
5906	TH 75	Pipestone Nat Monu Entr. Marker	PP-PPC-154
6108	TH 55	Glenwood Overlook	PO-GLC-022
6220	TH 61	Point Douglas Road Retaining Wall	RA-SPC-2928
6220	TH 61/10	Burns Avenue Overlook	RA-SPC-2927
6403	TH 19/71	Redwood Falls Retaining Wall	RW-RFC-032
6508	TH 71	Birch Coulee Historical Marker	RN-BCO-004
6508	TH 71	Morton Pioneer Monuments R.P.A.	RN-BFS-002
6904	TH 169/1	Soudan Roadside Parking Area	SL-SOC-001
6910	TH 23	Fond du Lac Culvert (Bridge 5757)	SL-DUL-2416
6910	TH 23	Fond du Lac Historical Marker	SL-DUL-2429
6910	TH 23	New Duluth Overlook	SL-DUL-2430
6922	TH 53	Orr Roadside Parking Area	SL-ORC-005
6924	I 35	Thompson Hill Overlook	SL-DUL-2431
6925	TH 61	Lester River Bridge (Bridge 5772)	SL-DUL-2428
6926	TH 61	Clifton-French River Historical Marker	SL-DUT-002
6934	TH 169/73	Pillsbury Mine Overlook	SL-BAL-004
6982	I 35	Thompson Hill-Skyline Pkwy Ovr	SL-DUL-2468
7005	TH 101	Mill Pond Roadside Parking Area	SC-SPC-069

7101	TH 10	Babcock Memorial Park	SH-ERC-028
7101	TH 10/169	National Grange Historical Marker	SH-ERC-029
7103	TH 10	St. Cloud Historical Marker	SH-SCC-048
7303	TH 15	Maine Prairie Corners Historical Marker	SN-MPR-004
7305	TH 23	Cold Spring Roadside Parking Area	SN-CSC-024
7603	TH 12	Pomme de Terre Roadside Parking Area	SW-MOY-007
7709	TH 71	Hewitt Roadside Parking Area	TO-HEW-012
7804	TH 28/7	Browns Valley Historical Marker	TR-FOL-006
7903	TH 60	Wabasha Overlook	WB-WBC-183
7906	TH 61	Lake City Concourse	WB-LKC-093
7906	TH 61	Reads Landing Overlook	WB-PEP-012
8208	TH 95	Bolles Mill Historical Marker	WA-AFC-035
8210	TH 95	Indian Battle Ground Historical Marker	WA-SWC-713
8210	TH 95	Marine on St. Croix R.P.A.	WA-MXC-015
8210	TH 95	St. Croix Boomsite Roadside Parking Area	WA-SWT-004
8210	TH 95	Stillwater Overlook - North	WA-SWT-013
8210	TH 95	Tamarack House Historical Marker	WA-SWC-714
8214	TH 36/95	Stillwater Overlook - South	WA-OHC-005
8214	TH 95	Stillwater Retaining Wall	WA-SWC-1205
8601	TH 12	Dustin Memorial Wayside	WR-MDL-004
8607	TH 55	Dickinson Spring Roadside Parking Area	WR-RKT-006
8707	TH 67	Granite Falls Overlook	YM-GRN-078

**APPENDIX B: MN/DOT HISTORIC ROADSIDE DEVELOPMENT STRUCTURES
INVENTORY OF 110 PROPERTIES ORDERED BY MN/DOT DISTRICT**

Mn/DOT District	Trunk Highway	Site Name	SHPO Inventory #
1A	TH 18	Big Pine Lake Roadside Parking Area	PN-PLK-006
1A	TH 23	Wrenshall Overlook/Veterans' Memorial Ov	CL-TLK-004
1A	TH 23	Fond du Lac Culvert (Bridge 5757)	SL-DUL-2416
1A	TH 23	Fond du Lac Historical Marker	SL-DUL-2429
1A	TH 23	New Duluth Overlook	SL-DUL-2430
1A	I 35	Thompson Hill Overlook	SL-DUL-2431
1A	I 35	Thompson Hill-Skyline Pkwy Ovr	SL-DUL-2468
1A	TH 61	Lester River Bridge (Bridge 5772)	SL-DUL-2428
1A	TH 61	Clifton-French River Historical Marker	SL-DUT-002
1A	TH 61	Gooseberry Falls Concourse	LA-SVC-046
1A	TH 61	Split Rock Lighthouse Overlook	LA-BBT-023
1A	TH 61	Cross River Rest Area	CK-UOG-047
1A	TH 61	Temperance River Roadside Parking Area	CK-UOG-046
1A	TH 61	Berglund, Ray, Roadside Parking Area	CK-TFT-001
1A	TH 61	Spruce Creek Culvert (Bridge 8292)	CK-UOG-045
1A	TH 61	Cascade River Wayside	CK-UOG-044
1A	TH 61	Grand Marais Harbor Sea Wall	CK-GMC-029
1B	TH 53	Orr Roadside Parking Area	SL-ORC-005
1B	TH 169/1	Soudan Roadside Parking Area	SL-SOC-001
1B	TH 169	Spang Spring Roadside Parking Area	IC-SPG-004
1B	TH 169/73	Pillsbury Mine Overlook	SL-BAL-004
2A	TH 72	Baudette Rest Area	LW-BDC-030
2A	TH 200	Whipholt Roadside Parking Area	CA-PLK-003
2B	TH 75	Noyes Roadside Parking Area	KT-SVT-002
3A	TH 6	Willow Lake Roadside Parking Area	CA-TOR-002
3A	TH 18	Kenney Lake Overlook	CW-GRT-003
3A	TH 71	Hewitt Roadside Parking Area	TO-HEW-012
3A	TH 115/371	Camp Ripley Entrance Walls	MO-GRE-047
3A	TH 169	Vineland Historical Marker	ML-KAN-006
3A	TH 169	Whitefish Creek Bridge (Bridge 3355)	ML-KAN-005
3A	TH 169	TH 169 Culvert at St. Alban's Bay	CW-GRT-002
3A	TH 169	Garrison Rest Area	CW-GRT-001
3A	TH 169	Garrison Ped Underpass (Bridge 5265)	CW-GRC-005
3A	TH 169	Garrison Concourse	CW-GRC-001
3A	TH 169	Garrison Creek Culvert (Bridge 5266)	CW-GRC-006
3A	TH 169	Pine-Hickory Lakes Roadside Parking Area	AK-FIS-017

APPENDIX B

3A	TH 371	Long Lake Roadside Parking Area	CW-NSC-004
3B	TH 10	St. Cloud Historical Marker	SH-SCC-048
3B	TH 10	Babcock Memorial Park	SH-ERC-028
3B	TH 12	Dustin Memorial Wayside	WR-MDL-004
3B	TH 15	Maine Prairie Corners Historical Marker	SN-MPR-004
3B	TH 23	Cold Spring Roadside Parking Area	SN-CSC-024
3B	TH 55	Dickinson Spring Roadside Parking Area	WR-RKT-006
4A	TH 10	Detroit Lakes Overlook	BK-DLC-157
4A	TH 59	Pelican Rapids Village Historical Marker	OT-PRC-021
4A	TH 59	Minnesota Woman Roadside Parking Area	OT-PEL-001
4A	TH 78	Craigie Flour Mill Historical Marker	OT-OTT-001
4A	TH 78	Otter Tail City Historical Marker	OT-OTC-004
4A	TH 108	Leaf City Historical Marker	OT-LLT-001
4B	TH 12	Pomme de Terre Roadside Parking Area	SW-MOY-007
4B	TH 27	Kensington Runestone Replica R.P.A.	DL-ALE-067
4B	TH 27	Stage Station Historical Marker	DL-OSA-021
4B	TH 28/7	Browns Valley Historical Marker	TR-FOL-006
4B	TH 28	Graceville Historical Marker	BS-GRA-017
4B	TH 55	Glenwood Overlook	PO-GLC-022
6A	TH 16	Inspiration Point Wayside Rest	FL-CRL-011
6A	TH 26	Reno Spring Roadside Parking Area	HU-JEF-007
6A	TH 52/16	Preston Overlook	FL-PRC-041
6A	TH 52	Chatfield Historical Marker	FL-CHC-034
6A	TH 60	Wabasha Overlook	WB-WBC-183
6A	TH 61	Reads Landing Overlook	WB-PEP-012
6A	TH 61	Lake City Concourse	WB-LKC-093
6A	TH 61/14	LaCrescent Overlook	HU-LCC-009
6A	TH 63	Silver Lake Roadside Parking Area	OL-ROC-105
6B	TH 57	Mantorville Retaining Walls	DO-MTC-038
6B A	TH 58	Red Wing Roadside Parking Area	GD-RWC-849
6B A	TH 61/63	Frontenac R.P.A./Maiden Rock	GD-FLC-054
6B A	TH 61/63	Frontenac State Park Gates	GD-FLC-057
6B A	TH 61/63	Fort Beauharnois Historical Marker	GD-FLC-056
6B A	TH 61/63	Minn State Training School Ent. Walls	GD-RWC-021
7A	TH 22	Mapleton Historical Marker	BE-MPC-031
7A	TH 22	Victory Memorial Rest Area	BE-DEC-008
7B	TH 14	New Ulm Spring Roadside Parking Area	NL-CTT-006
8A	TH 71	Birch Coulee Historical Marker	RN-BCO-004
8A	TH 71	Morton Pioneer Monuments R.P.A.	RN-BFS-002

8B	TH 19/71	Redwood Falls Retaining Wall	RW-RFC-032
8B	TH 59	Avoca Historical Marker	MU-AVC-010
8B	TH 67	Granite Falls Overlook	YM-GRN-078
8B	TH 75	Pipestone Nat Monu Entr. Marker	PP-PPC-154
8B	TH 212/59	Camp Release State Memorial Wayside	LP-CAM-003
Met E	TH 8/95	Taylors Falls Overlook - South	CH-SHT-032
Met E	TH 13	Mendota Overlook	DK-MHC-012
Met E	TH 13	Sibley Pioneer Church Monument	DK-MDC-011
Met E	TH 36/95	Stillwater Overlook - South	WA-OHC-005
Met E	TH 52/55	Pine Bend Historical Marker	DK-IVG-023
Met E	TH 55/110	Mendota Granite Arrow Marker	DK-MDC-010
Met E	TH 61	Point Douglas Road Retaining Wall	RA-SPC-2928
Met E	TH 61/10	Burns Avenue Overlook	RA-SPC-2927
Met E	TH 95	Taylors Falls Overlook - North	CH-TFC-055
Met E	TH 95	Marine on St. Croix R.P.A.	WA-MXC-015
Met E	TH 95	St. Croix Boomsite Roadside Parking Area	WA-SWT-004
Met E	TH 95	Stillwater Overlook - North	WA-SWT-013
Met E	TH 95	Tamarack House Historical Marker	WA-SWC-714
Met E	TH 95	Indian Battle Ground Historical Marker	WA-SWC-713
Met E	TH 95	Stillwater Retaining Wall	WA-SWC-1205
Met E	TH 95	Bolles Mill Historical Marker	WA-AFC-035
Met W	TH 7	Christmas Lake Roadside Parking Area	HE-SHC-022
Met W	TH 10/169	Daytonport Roadside Parking Area	AN-RMC-008
Met W	TH 10/169	National Grange Historical Marker	SH-ERC-029
Met W	TH 55	Olson, Floyd B., Memorial Statue	HE-MPC-9013
Met W	TH 55	TH 55 Retaining Wall	HE-GVC-052
Met W	TH 100	Blazer Park	HE-GVC-047B
Met W	TH 100	Graeser Park	HE-RBC-025
Met W	TH 100	Graeser Park - South	HE-RBC-160
Met W	TH 100	Lilac Park	HE-SLC-013
Met W	TH 100	St. Louis Park Roadside Parking Area	HE-SLC-017
Met W	TH 100	TH 100 at TH 55 Retaining Walls	HE-GVC-053
Met W	TH 100	TH 100 Culvert (Bridge 5442)	HE-GVC-051
Met W	TH 101	Mill Pond Roadside Parking Area	SC-SPC-069
Met W	TH 212	Chaska Historical Marker	CR-CKC-057

**APPENDIX C: MN/DOT HISTORIC ROADSIDE DEVELOPMENT STRUCTURES
INVENTORY OF 110 PROPERTIES ORDERED BY SITE NAME**

<u>Site Name</u>	<u>SHPO Inventory #</u>	<u>Mn/DOT District</u>	<u>Trunk Highway</u>
Avoca Historical Marker	MU-AVC-010	8B	TH 59
Babcock Memorial Park	SH-ERC-028	3B	TH 10
Baudette Rest Area	LW-BDC-030	2A	TH 72
Berglund, Ray, Roadside Parking Area	CK-TFT-001	1A	TH 61
Big Pine Lake Roadside Parking Area	PN-PLK-006	1A	TH 18
Birch Coulee Historical Marker	RN-BCO-004	8A	TH 71
Blazer Park	HE-GVC-047B	Met W	TH 100
Bolles Mill Historical Marker	WA-AFC-035	Met E	TH 95
Browns Valley Historical Marker	TR-FOL-006	4B	TH 28/7
Burns Avenue Overlook	RA-SPC-2927	Met E	TH 61/10
Camp Release State Memorial Wayside	LP-CAM-003	8B	TH 212/59
Camp Ripley Entrance Walls	MO-GRE-047	3A	TH 115/371
Cascade River Wayside	CK-UOG-044	1A	TH 61
Chaska Historical Marker	CR-CKC-057	Met W	TH 212
Chatfield Historical Marker	FL-CHC-034	6A	TH 52
Christmas Lake Roadside Parking Area	HE-SHC-022	Met W	TH 7
Clifton-French River Historical Marker	SL-DUT-002	1A	TH 61
Cold Spring Roadside Parking Area	SN-CSC-024	3B	TH 23
Craigie Flour Mill Historical Marker	OT-OTT-001	4A	TH 78
Cross River Rest Area	CK-UOG-047	1A	TH 61
Daytonport Roadside Parking Area	AN-RMC-008	Met W	TH 10/169
Detroit Lakes Overlook	BK-DLC-157	4A	TH 10
Dickinson Spring Roadside Parking Area	WR-RKT-006	3B	TH 55
Dustin Memorial Wayside	WR-MDL-004	3B	TH 12
Fond du Lac Culvert (Bridge 5757)	SL-DUL-2416	1A	TH 23
Fond du Lac Historical Marker	SL-DUL-2429	1A	TH 23
Fort Beauharnois Historical Marker	GD-FLC-056	6B	TH 61/63
Frontenac R.P.A./Maiden Rock	GD-FLC-054	6B	TH 61/63
Frontenac State Park Gates	GD-FLC-057	6B	TH 61/63
Garrison Concourse	CW-GRC-001	3A	TH 169
Garrison Creek Culvert (Bridge 5266)	CW-GRC-006	3A	TH 169
Garrison Ped Underpass (Bridge 5265)	CW-GRC-005	3A	TH 169
Garrison Rest Area	CW-GRT-001	3A	TH 169
Glenwood Overlook	PO-GLC-022	4B	TH 55
Gooseberry Falls Concourse	LA-SVC-046	1A	TH 61
Graceville Historical Marker	BS-GRA-017	4B	TH 28
Graeser Park	HE-RBC-025	Met W	TH 100
Graeser Park - South	HE-RBC-160	Met W	TH 100
Grand Marais Harbor Sea Wall	CK-GMC-029	1A	TH 61

APPENDIX C

Granite Falls Overlook	YM-GRN-078	8B	TH 67
Hewitt Roadside Parking Area	TO-HEW-012	3A	TH 71
Indian Battle Ground Historical Marker	WA-SWC-713	Met E	TH 95
Inspiration Point Wayside Rest	FL-CRL-011	6A	TH 16
Kenney Lake Overlook	CW-GRT-003	3A	TH 18
Kensington Runestone Replica R.P.A.	DL-ALE-067	4B	TH 27
LaCrescent Overlook	HU-LCC-009	6A	TH 61/14
Lake City Concourse	WB-LKC-093	6A	TH 61
Leaf City Historical Marker	OT-LLT-001	4A	TH 108
Lester River Bridge (Bridge 5772)	SL-DUL-2428	1A	TH 61
Lilac Park	HE-SLC-013	Met W	TH 100
Long Lake Roadside Parking Area	CW-NSC-004	3A	TH 371
Maine Prairie Corners Historical Marker	SN-MPR-004	3B	TH 15
Mantorville Retaining Walls	DO-MTC-038	6B	TH 57
Mapleton Historical Marker	BE-MPC-031	7A	TH 22
Marine on St. Croix R.P.A.	WA-MXC-015	Met E	TH 95
Mendota Granite Arrow Marker	DK-MDC-010	Met E	TH 55/110
Mendota Overlook	DK-MHC-012	Met E	TH 13
Mill Pond Roadside Parking Area	SC-SPC-069	Met W	TH 101
Minn State Training School Ent. Walls	GD-RWC-021	6B	TH 61/63
Minnesota Woman Roadside Parking Area	OT-PEL-001	4A	TH 59
Morton Pioneer Monuments R.P.A.	RN-BFS-002	8A	TH 71
National Grange Historical Marker	SH-ERC-029	Met W	TH 10/169
New Duluth Overlook	SL-DUL-2430	1A	TH 23
New Ulm Spring Roadside Parking Area	NL-CTT-006	7B	TH 14
Noyes Roadside Parking Area	KT-SVT-002	2B	TH 75
Olson, Floyd B., Memorial Statue	HE-MPC-9013	Met W	TH 55
Orr Roadside Parking Area	SL-ORC-005	1B	TH 53
Otter Tail City Historical Marker	OT-OTC-004	4A	TH 78
Pelican Rapids Village Historical Marker	OT-PRC-021	4A	TH 59
Pillsbury Mine Overlook	SL-BAL-004	1B	TH 169/73
Pine Bend Historical Marker	DK-IVG-023	Met E	TH 52/55
Pine-Hickory Lakes Roadside Parking Area	AK-FIS-017	3A	TH 169
Pipestone Nat Monu Entr. Marker	PP-PPC-154	8B	TH 75
Point Douglas Road Retaining Wall	RA-SPC-2928	Met E	TH 61
Pomme de Terre Roadside Parking Area	SW-MOY-007	4B	TH 12
Preston Overlook	FL-PRC-041	6A	TH 52/16
Reads Landing Overlook	WB-PEP-012	6A	TH 61
Red Wing Roadside Parking Area	GD-RWC-849	6B	TH 58
Redwood Falls Retaining Wall	RW-RFC-032	8B	TH 19/71
Reno Spring Roadside Parking Area	HU-JEF-007	6A	TH 26
Sibley Pioneer Church Monument	DK-MDC-011	Met E	TH 13
Silver Lake Roadside Parking Area	OL-ROC-105	6A	TH 63
Soudan Roadside Parking Area	SL-SOC-001	1B	TH 169/1
Spang Spring Roadside Parking Area	IC-SPG-004	1B	TH 169
Split Rock Lighthouse Overlook	LA-BBT-023	1A	TH 61
Spruce Creek Culvert (Bridge 8292)	CK-UOG-045	1A	TH 61
St. Cloud Historical Marker	SH-SCC-048	3B	TH 10

St. Croix Boomsite Roadside Parking Area	WA-SWT-004	Met E	TH 95
St. Louis Park Roadside Parking Area	HE-SLC-017	Met W	TH 100
Stage Station Historical Marker	DL-OSA-021	4B	TH 27
Stillwater Overlook - North	WA-SWT-013	Met E	TH 95
Stillwater Overlook - South	WA-OHC-005	Met E	TH 36/95
Stillwater Retaining Wall	WA-SWC-1205	Met E	TH 95
Tamarack House Historical Marker	WA-SWC-714	Met E	TH 95
Taylors Falls Overlook - North	CH-TFC-055	Met E	TH 95
Taylors Falls Overlook - South	CH-SHT-032	Met E	TH 8/95
Temperance River Roadside Parking Area	CK-UOG-046	1A	TH 61
TH 55 Retaining Wall	HE-GVC-052	Met W	TH 55
TH 100 at TH 55 Retaining Walls	HE-GVC-053	Met W	TH 100
TH 100 Culvert (Bridge 5442)	HE-GVC-051	Met W	TH 100
TH 169 Culvert at St. Alban's Bay	CW-GRT-002	3A	TH 169
Thompson Hill Overlook	SL-DUL-2431	1A	I 35
Thompson Hill-Skyline Pkwy Ovr	SL-DUL-2468	1A	I 35
Victory Memorial Rest Area	BE-DEC-008	7A	TH 22
Vineland Historical Marker	ML-KAN-006	3A	TH 169
Wabasha Overlook	WB-WBC-183	6A	TH 60
Whipholt Roadside Parking Area	CA-PLK-003	2A	TH 200
Whitefish Creek Bridge (Bridge 3355)	ML-KAN-005	3A	TH 169
Willow Lake Roadside Parking Area	CA-TOR-002	3A	TH 6
Wrenshall Overlook/Veterans' Memorial Ov	CL-TLK-004	1A	TH 23

