



Location Map – Project D2-2 Walker, Cass County, Leech Lake Tribal Boundary



Overall Weighted Score: **6.84**

Figure 1: Mobility and Reliability Summary

		Travel Time Reliability ¹	Speed Index ²
Weekday	6a-10a	Reliable	Slow
Weekday	10a-4p	Unreliable	Slow
Weekday	4p-8p	Reliable	Slow
Weekend	6a-8p	Reliable	Slow

¹ Segment considered unreliable if Level of Travel Time Reliability index is greater than 1.5

² Segment considered slow if Speed Index is less than 0.9

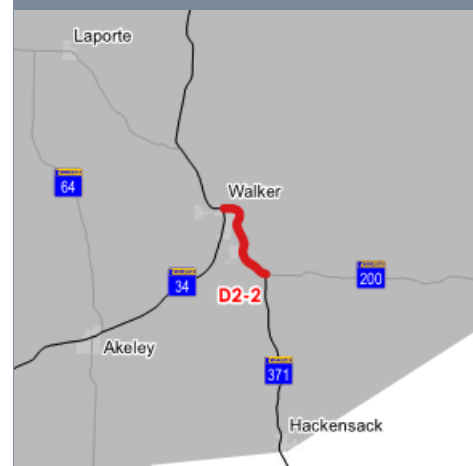
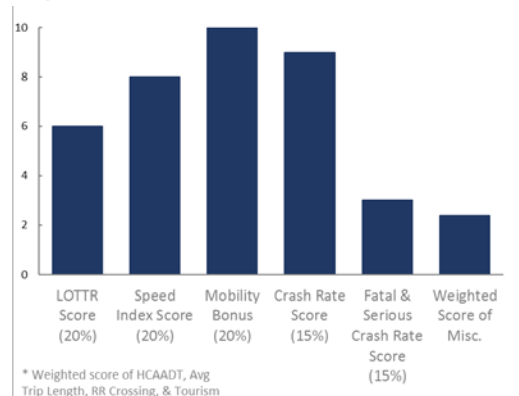
Location Description:

Three lane roadway with a center turn lane in downtown environment at either end with multiple accesses. Two lane roadway with wide shoulders in between both end of corridor.

District Input: This was previously identified as issue through IRC studies. Downtown environment with many considerations. Some discussions of intersection control changes and a bypass.

Potential Follow-Up: Additional study needed

Figure 2: Evaluation Criteria Scores





Location Map – Project D2-3 Bemidji, Beltrami County



Overall Weighted Score: **6.44**

Figure 1: Mobility and Reliability Summary

		Travel Time Reliability ¹	Speed Index ²
Weekday	6a-10a	Unreliable	Slow
Weekday	10a-4p	Unreliable	Slow
Weekday	4p-8p	Unreliable	Slow
Weekend	6a-8p	Reliable	OK

¹ Segment considered unreliable if Level of Travel Time Reliability index is greater than 1.5

² Segment considered slow if Speed Index is less than 0.9

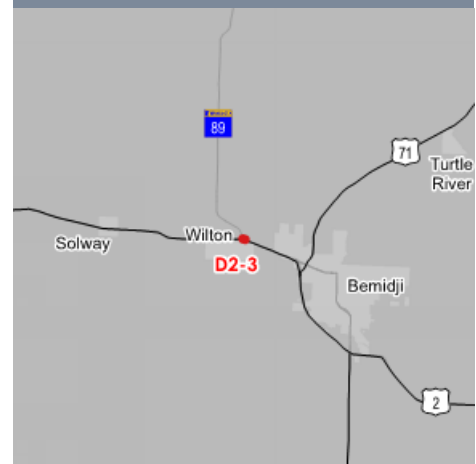
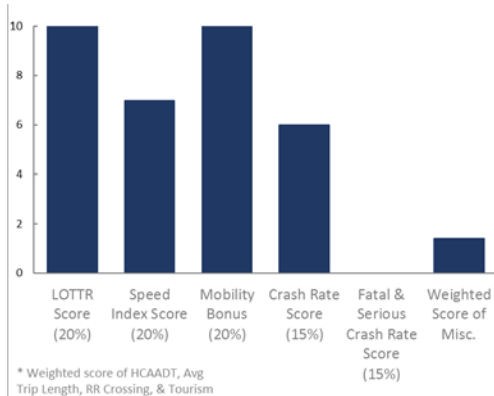
Location Description:

A divided four-lane highway with many accesses and wide shoulders. One signalized access entering Bemidji.

District Input: This location is District's highest priority. A fly-over was added in 2015 which has improved safety. A reduced conflict intersection is programmed in 2021.

Potential Follow-Up: Input for planned project

Figure 2: Evaluation Criteria Scores





Location Map – Project D2-5 East Grand Forks, Polk County



Overall Weighted Score: **5.72**

Figure 1: Mobility and Reliability Summary

		Travel Time Reliability ¹	Speed Index ²
Weekday	6a-10a	Unreliable	Slow
Weekday	10a-4p	Unreliable	
Weekday	4p-8p	Unreliable	Slow
Weekend	6a-8p	Unreliable	Slow

¹ Segment considered unreliable if Level of Travel Time Reliability index is greater than 1.5

² Segment considered slow if Speed Index is less than 0.9

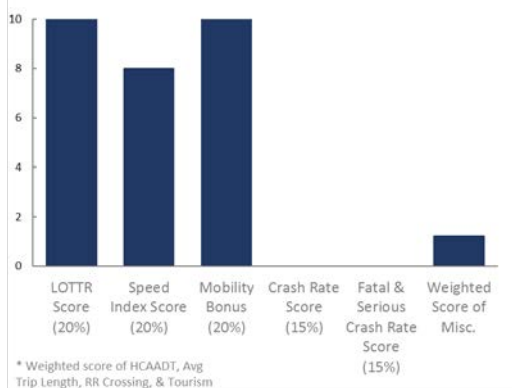
Location Description:

Three lane urban roadway with center left turn lane. Signalized intersection one block north of bridge.

District Input: None

Potential Follow-Up: None

Figure 2: Evaluation Criteria Scores





Location Map – Project D2-6 Bemidji, Beltrami County



Overall Weighted Score: **5.44**

Figure 1: Mobility and Reliability Summary

		Travel Time Reliability ¹	Speed Index ²
Weekday	6a-10a	Unreliable	Slow
	10a-4p	Reliable	Slow
	4a-8p	Reliable	Slow
Weekend	6a-8p	Unreliable	Slow

¹ Segment considered unreliable if Level of Travel Time Reliability index is greater than 1.5

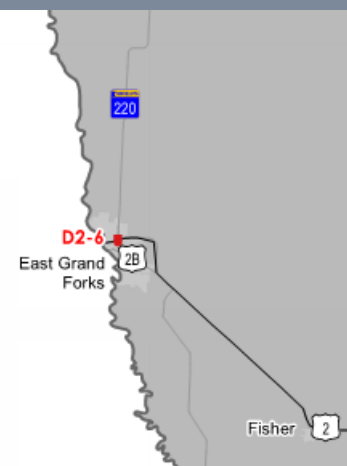
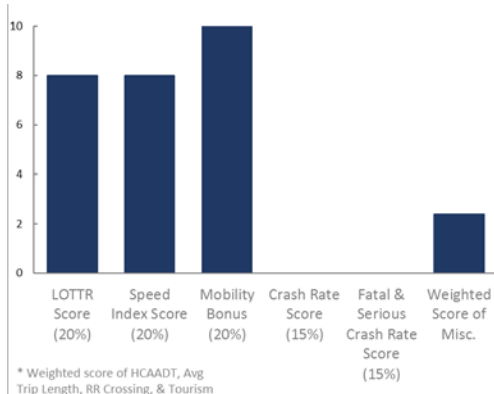
² Segment considered slow if Speed Index is less than 0.9

Location Description:
Divided four-lane roadway with designated left turn lane. Signalized intersection to the east.

District Input: None.

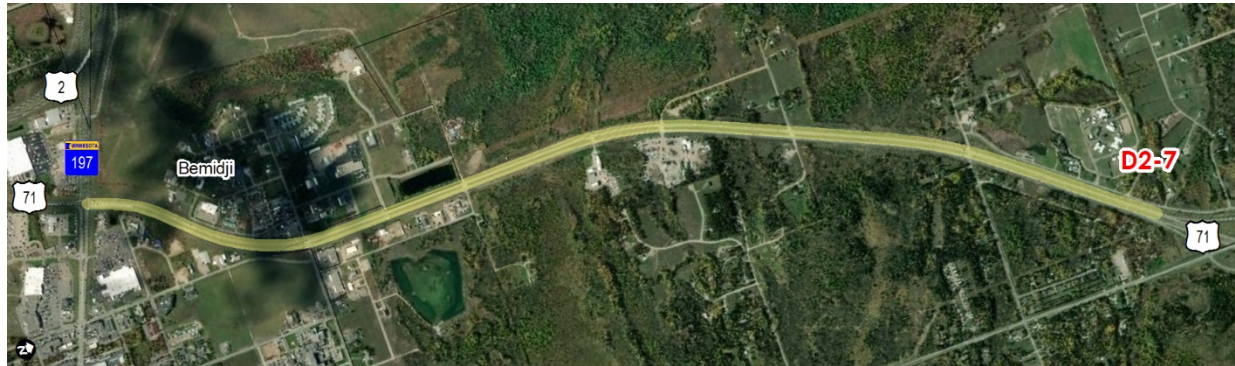
Potential Follow-Up: None

Figure 2: Evaluation Criteria Scores





Location Map – Project D2-7 Bemidji, Beltrami County



Overall Weighted Score: **5.29**

Figure 1: Mobility and Reliability Summary

		Travel Time Reliability ¹	Speed Index ²
Weekday		Reliable	Slow
Weekday	10a-4p	Unreliable	Slow
Weekday	4p-8p	Reliable	Slow
Weekend	6a-8p	Reliable	Slow

¹ Segment considered unreliable if Level of Travel Time Reliability index is greater than 1.5

² Segment considered slow if Speed Index is less than 0.9

Location Description:

Four lane divided highway with eight access points; two are signalized. There are large shoulders.

District Input: The district is planning to study this location. There is potential to remove the signal on Ann St. and do RCUT; however, further study is needed because Ann St. volumes are growing.

Potential Follow-Up: None

Figure 2: Evaluation Criteria Scores

