

Figure 1 Category Selection Criteria

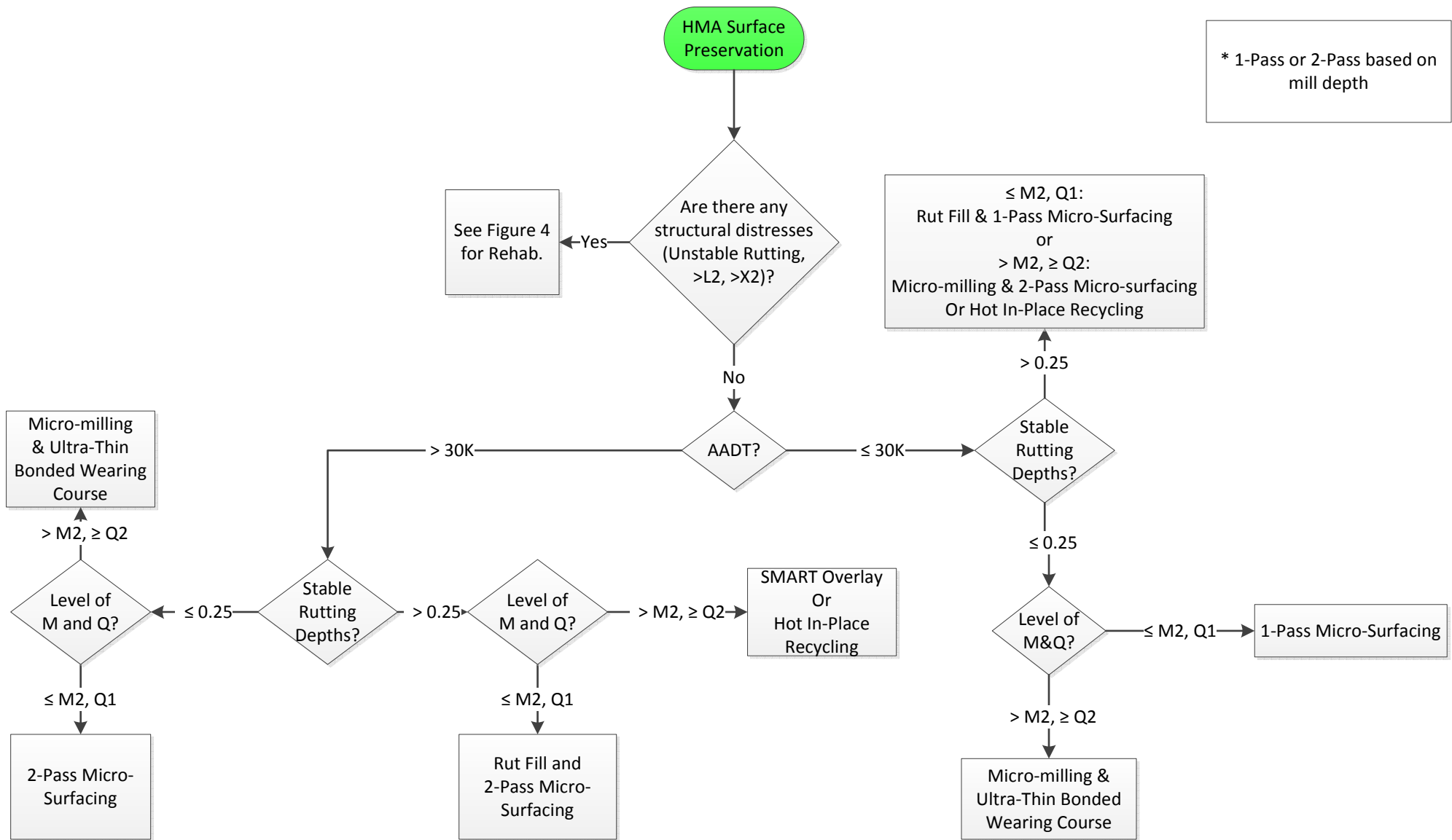


Figure 2a Interstate Asphalt-Surfaced Preservation Treatment Selection

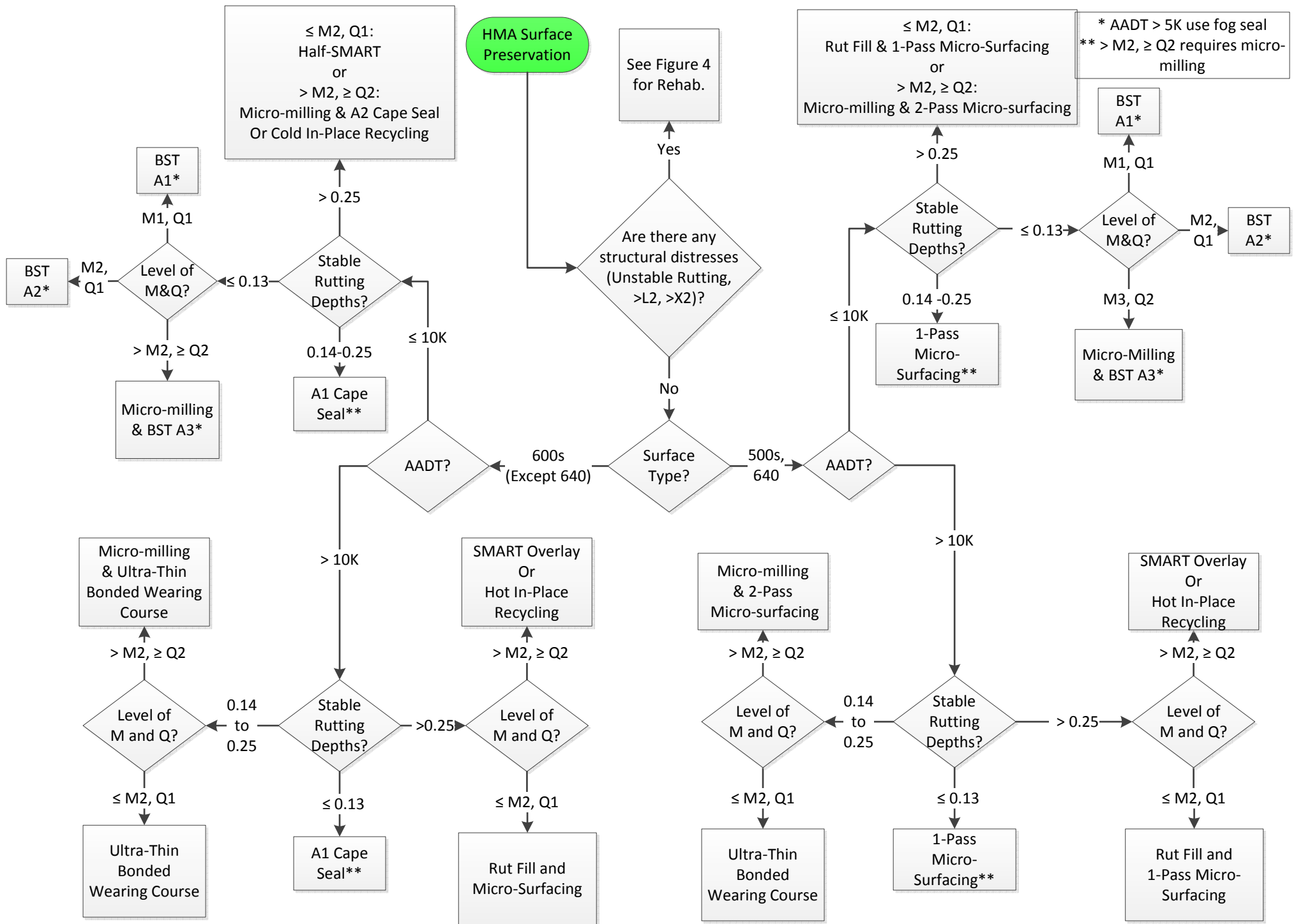


Figure 2b Non-Interstate Asphalt-Surfaced Preservation Treatment Selection

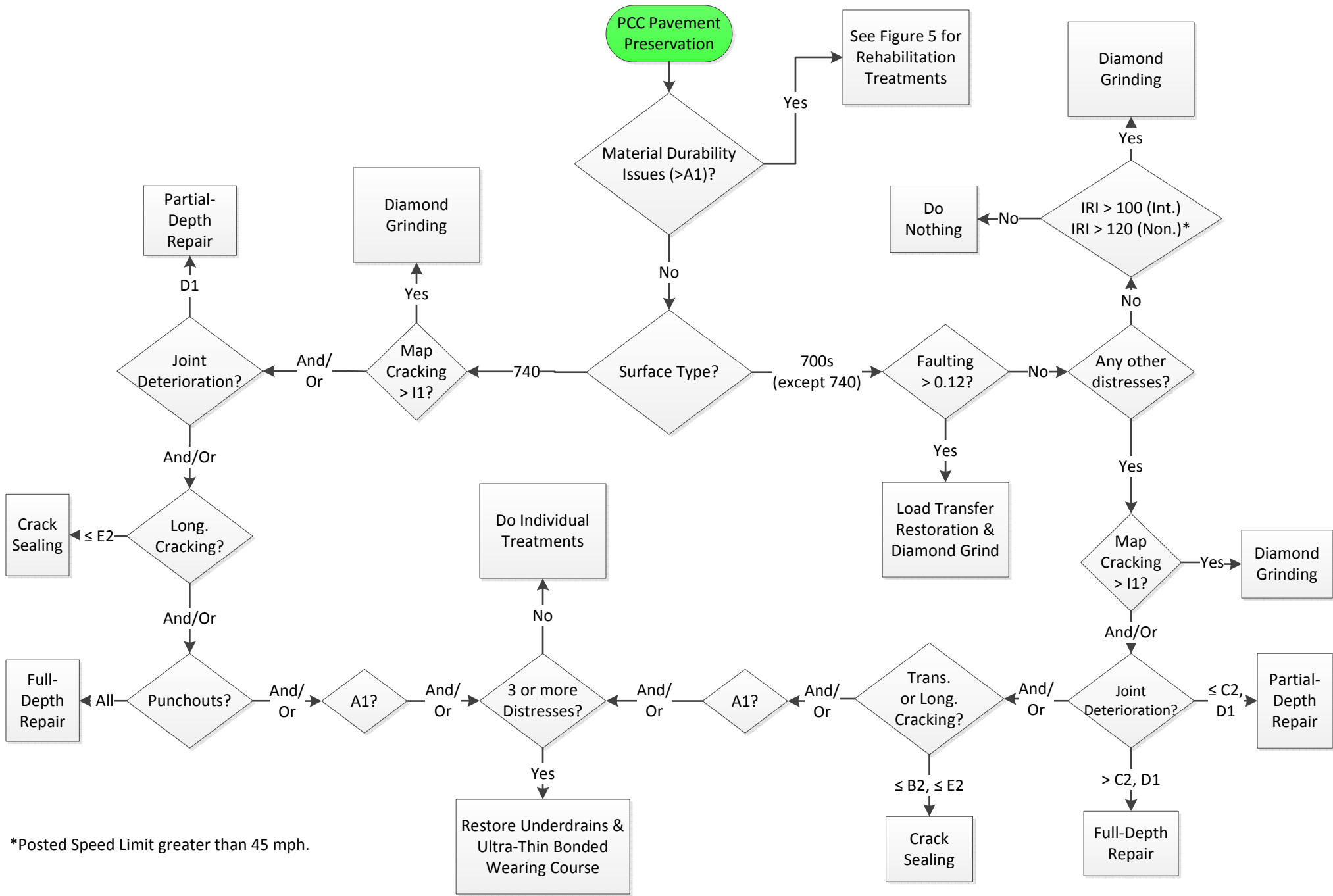
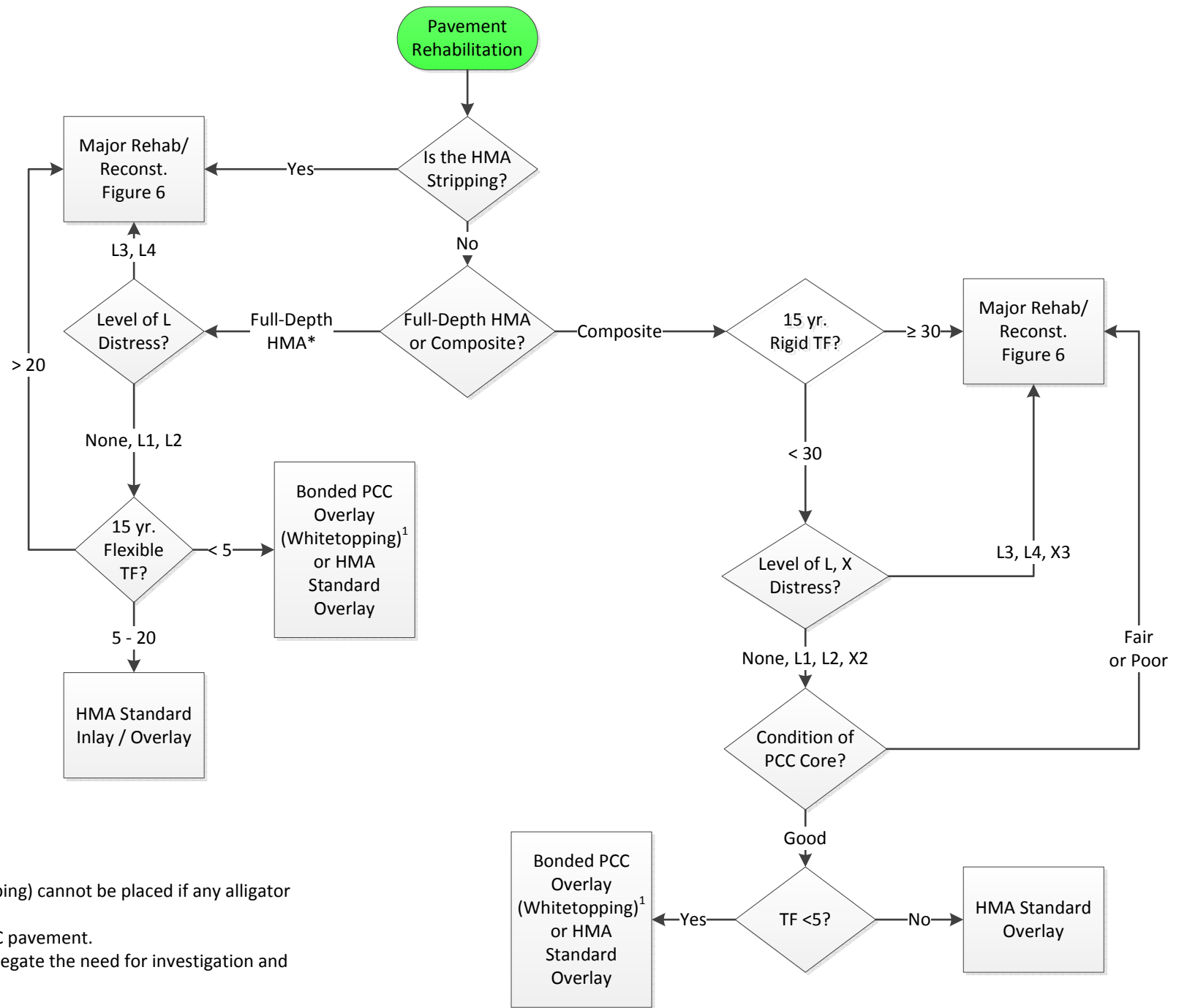


Figure 3 Concrete-Surfaced Preservation Treatment Selection



1) Bonded PCC Overlay (Whitopping) cannot be placed if any alligator cracking (L) is present.

* Includes HMA over rubblized PCC pavement.

Note: The final decision does not negate the need for investigation and engineering judgement.

Figure 4 Asphalt-Surfaced Minor Rehabilitation Treatment Selection

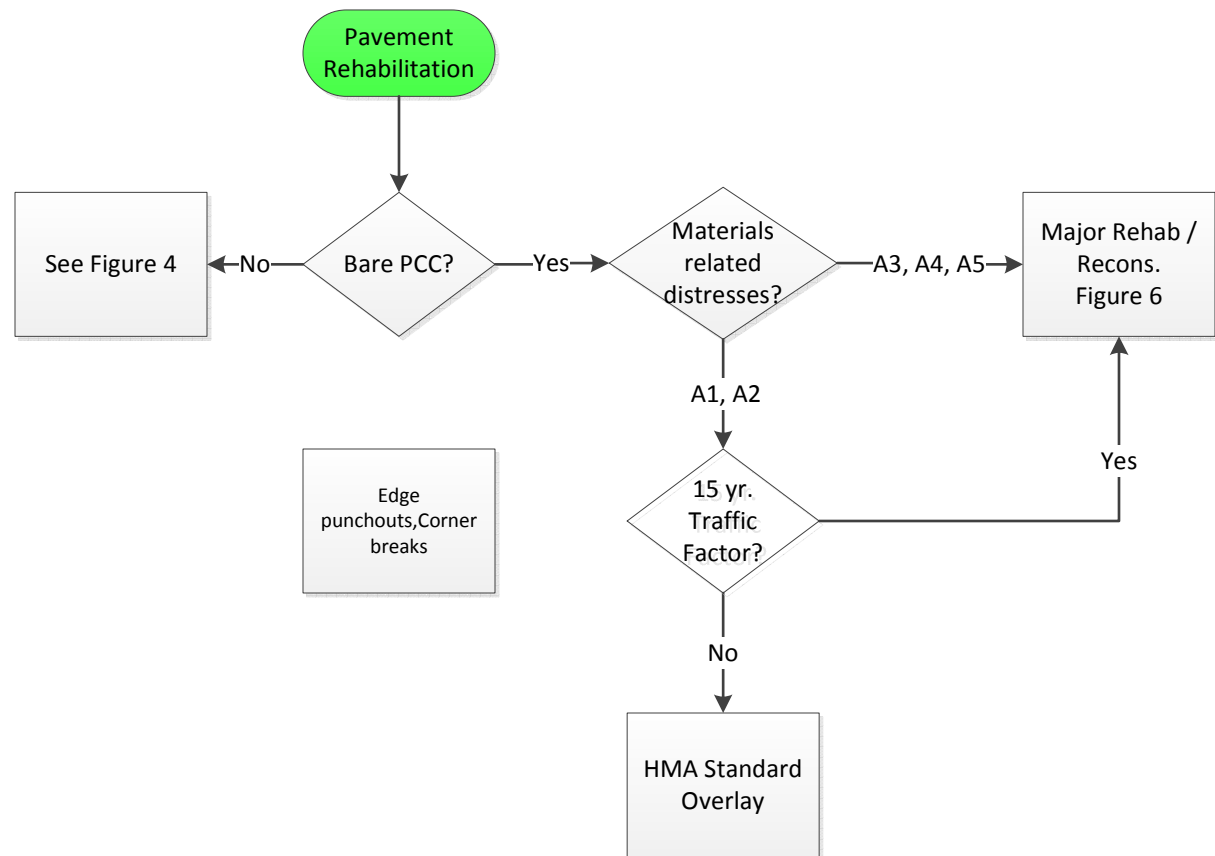


Figure 5 Concrete-Surfaced Minor Rehabilitation Treatment Selection

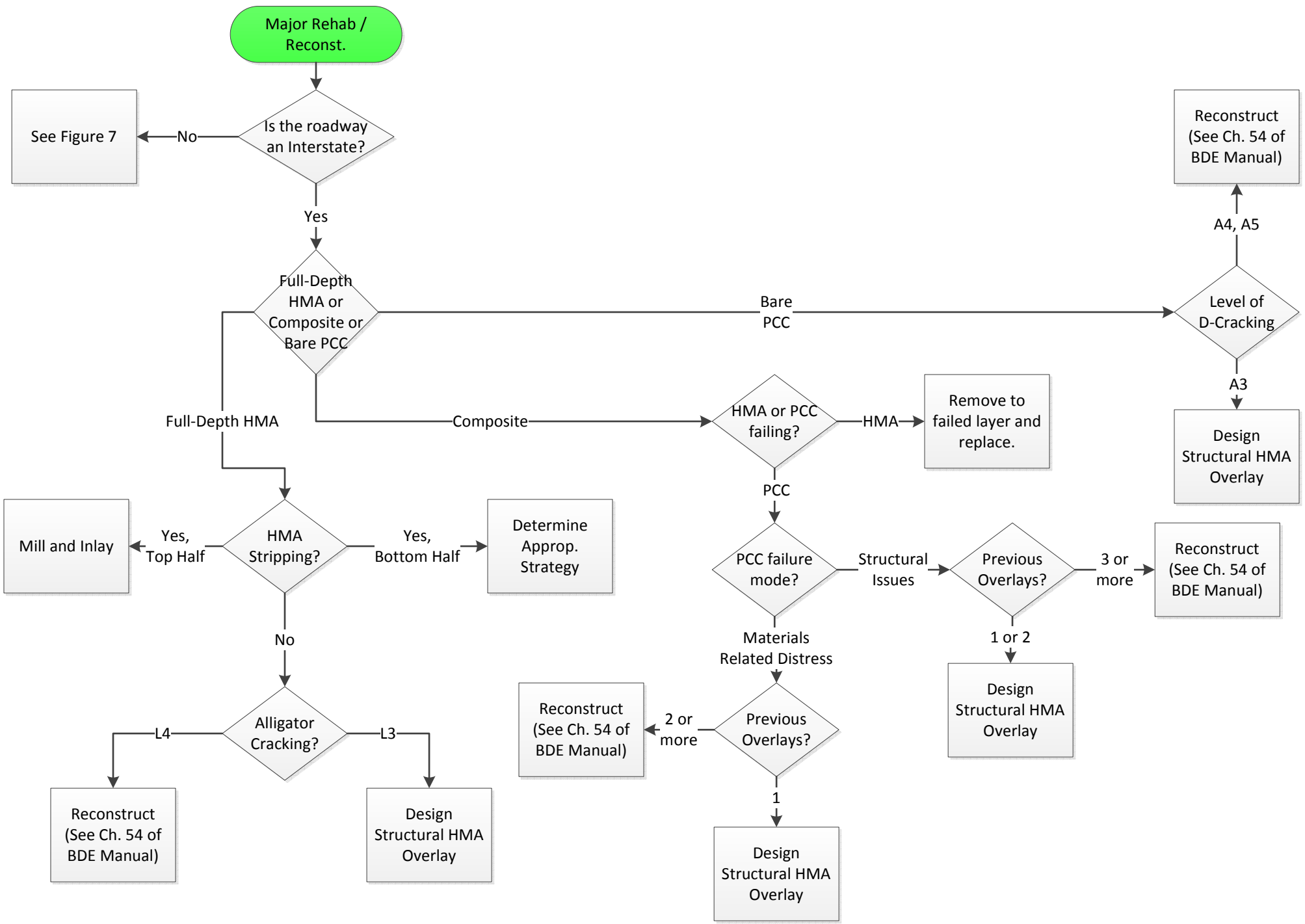


Figure 6 Interstate Major Rehabilitation Treatment Selection

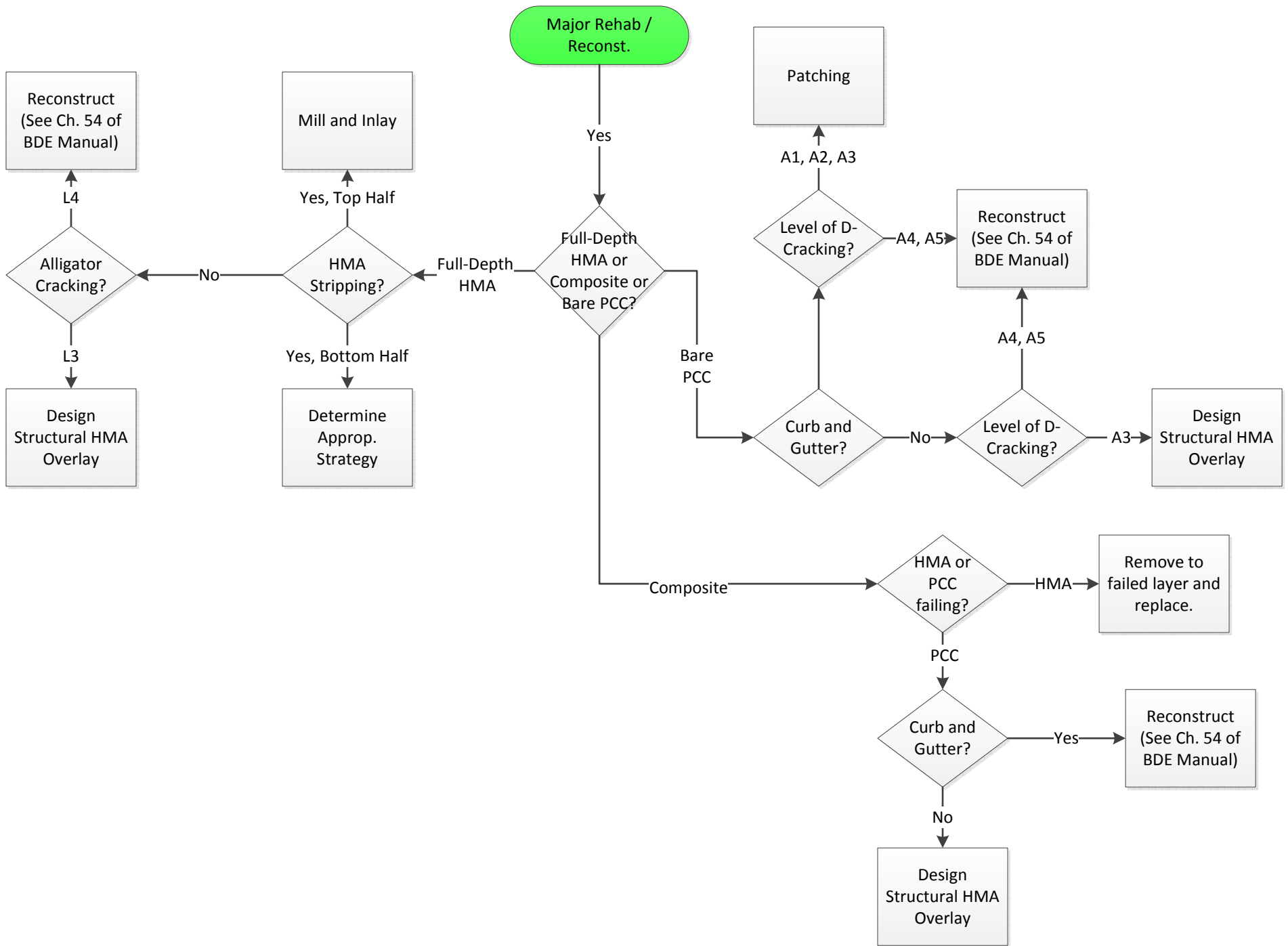


Figure 7 – Non-Interstate Major Rehabilitation and Reconstruction