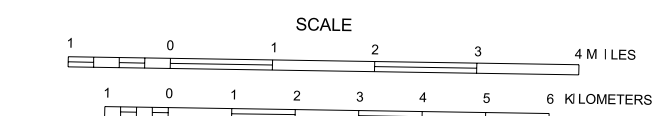


GENERAL HIGHWAY MAP

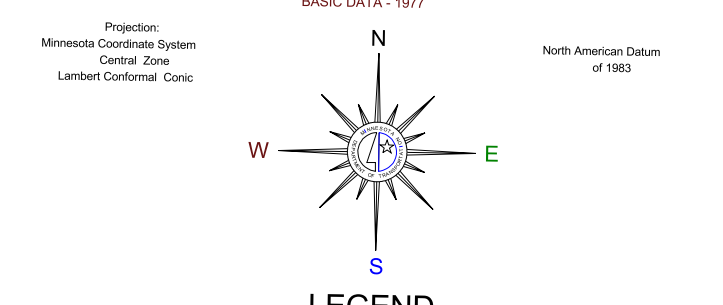
STEVENS COUNTY

MINNESOTA

PREPARED BY THE
MINNESOTA DEPARTMENT OF TRANSPORTATION
PROGRAM SUPPORT GROUP
IN COOPERATION WITH
U.S. DEPARTMENT OF TRANSPORTATION
FEDERAL HIGHWAY ADMINISTRATION



2000
BASIC DATA - 1977

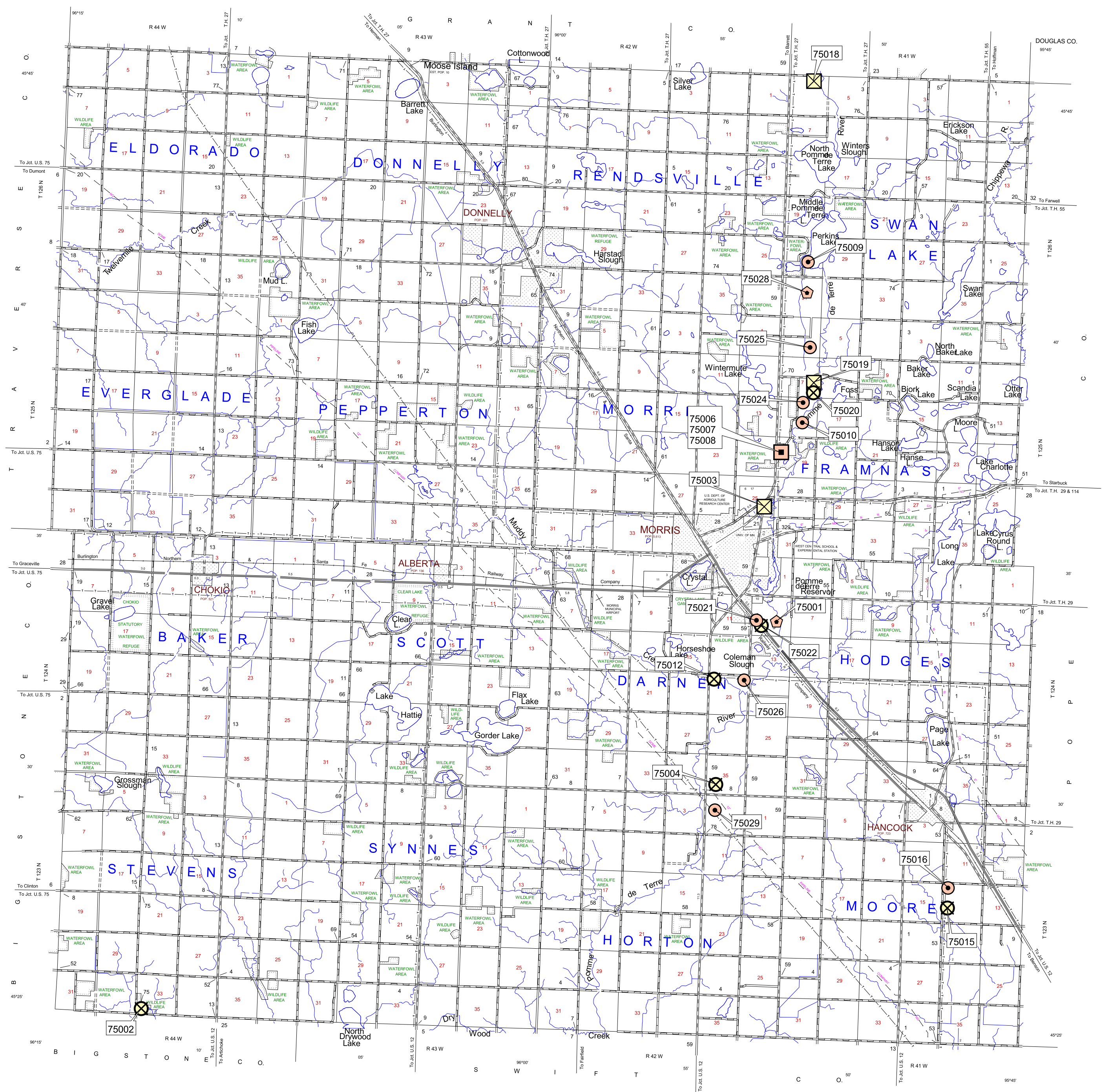


LEGEND

- | | |
|----------------------------------|-----------------------------------|
| ROAD AND ROADWAY FEATURES | NAVIGATION |
| ROAD SYSTEM DESIGNATIONS | CONSERVATION |
| FARM AND DWELLING UNITS | RECREATION |
| RAILROADS | FARM AND DWELLING UNITS |
| INDUSTRIAL | INDUSTRIAL |
| AIRWAYS | COMMERCIAL |
| STRUCTURES | PUBLIC SERVICE FACILITIES |
| BOUNDARIES | MISCELLANEOUS MAP FEATURES |
| DRAINAGE | BOUNDARIES |

- ### Aggregate Source Legend
- Gravel Pit - Active
 - Gravel Pit - Inactive
 - Mn/DOT - Active
 - Mn/DOT - Inactive
 - Commercial Aggregate
 - Rock Quarry
- Source: Aggregate Unit
Office of Materials & Road Research
Minnesota Dept. of Transportation

5/30/2002



*NOTE: ALL FEATURES EXCEPT TOWNSHIP ROADS AND CULTURE ARE CURRENT AS OF JANUARY 1, 2000.
NOTE: FOR DETAIL OF COUNTY STATE AND HIGHWAYS AND COUNTY ROADS IN INCORPORATED PLACES, SEE MAPS OF MUNICIPALITIES.

