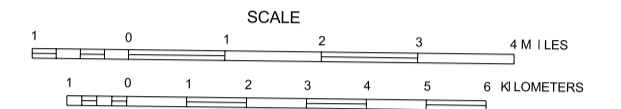


# GENERAL HIGHWAY MAP PIPESTONE COUNTY MINNESOTA

PREPARED BY THE  
MINNESOTA DEPARTMENT OF TRANSPORTATION  
PROGRAM SUPPORT GROUP  
IN COOPERATION WITH  
U.S. DEPARTMENT OF TRANSPORTATION  
FEDERAL HIGHWAY ADMINISTRATION



2000

BASIC DATA - 1977

Projection:  
Minnesota Coordinate System  
South Zone  
Lambert Conformal Conic

N

North American Datum  
of 1983



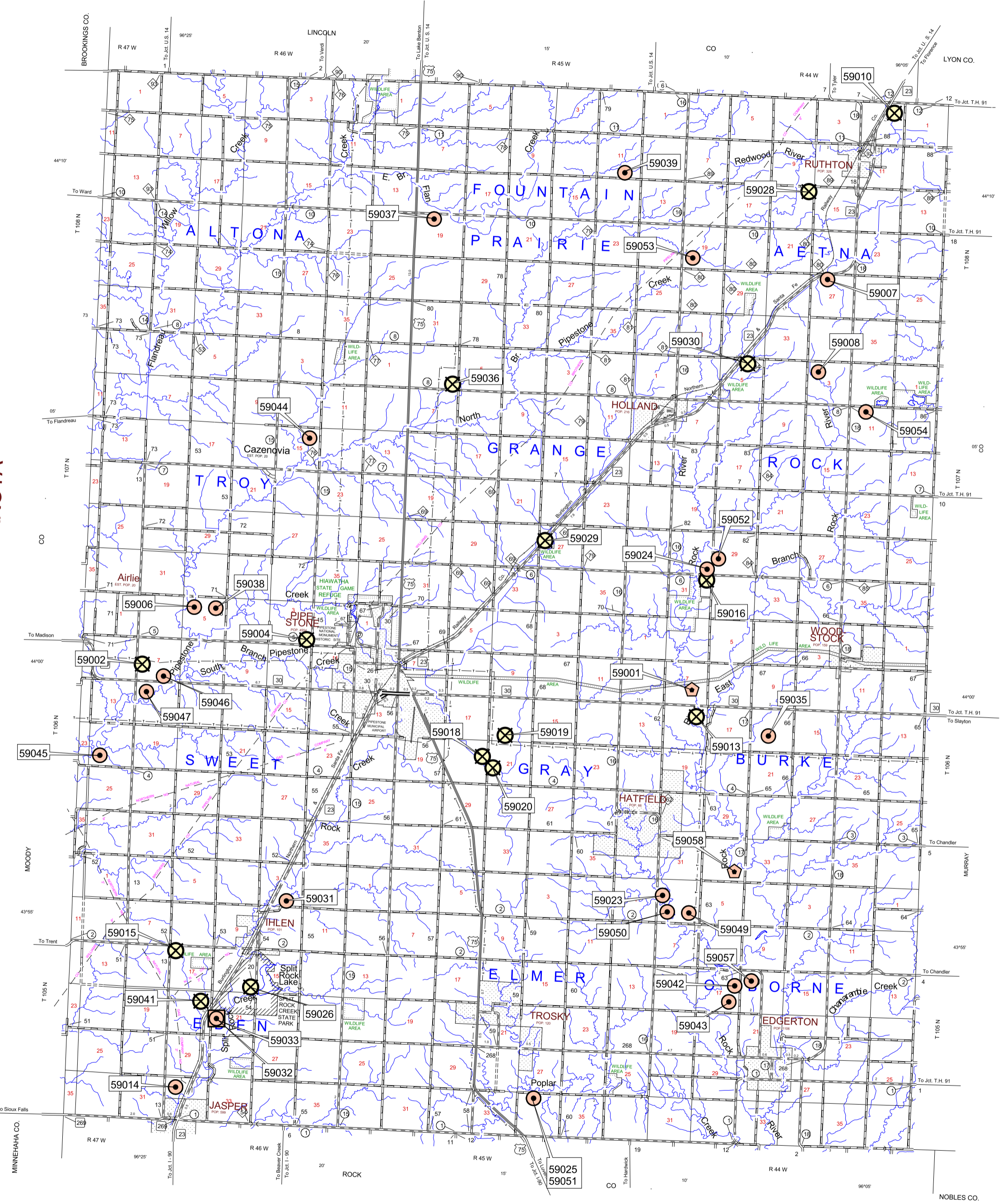
## LEGEND

ROAD AND ROADWAY FEATURES	UTILITIES	NAVIGATION
INTERSTATE ROAD	ELECTRIC POWER LINE	BRIDGE OVER HIGHWAY
STATE HIGHWAY	GAS LINE	FERRY
COUNTY ROAD	TELEPHONE LINE	LOCK
TOWNSHIP ROAD	SEWER LINE	DAM
PRIVATE ROAD	WATER LINE	TRESTLE
ROAD UNDER CONSTRUCTION	PIPELINE	CAUSEWAY
ROAD CLOSED	IRRIGATION CANAL	LIGHTED PIER
ROADWAY CONSTRUCTION	PIPELINE STATION	LIGHTED BUOY
ROADWAY CONSTRUCTION - STOP	PIPELINE STATION - STOP	LIGHTED BUOY - STOP
ROADWAY CONSTRUCTION - YIELD	PIPELINE STATION - YIELD	LIGHTED BUOY - YIELD
ROADWAY CONSTRUCTION - NO ENTRY	PIPELINE STATION - NO ENTRY	LIGHTED BUOY - NO ENTRY

- ### Aggregate Source Legend
- Gravel Pit - Active
  - Gravel Pit - Inactive
  - Mn/DOT - Active
  - Mn/DOT - Inactive
  - Commercial Aggregate
  - Rock Quarry

Source: Aggregate Unit  
Office of Materials & Road Research  
Minnesota Dept. of Transportation

4/25/2002



\* NOTE: ALL FEATURES EXCEPT TOWNSHIP ROADS AND CULTURE ARE CURRENT AS OF JANUARY 1, 2000.

NOTE: FOR DETAIL OF COUNTY STATE AID HIGHWAYS AND COUNTY ROADS IN INCORPORATED PLACES, SEE MAPS OF MUNICIPALITIES.

