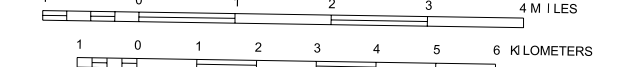


GENERAL HIGHWAY MAP DOUGLAS COUNTY MINNESOTA

PREPARED BY THE
MINNESOTA DEPARTMENT OF TRANSPORTATION
PROGRAM SUPPORT GROUP
IN COOPERATION WITH
U.S. DEPARTMENT OF TRANSPORTATION
FEDERAL HIGHWAY ADMINISTRATION

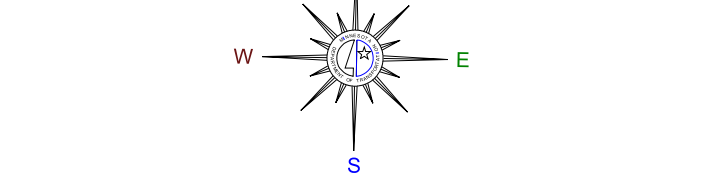
SCALE



2001

BASIC DATA - 1977

Projection:
Minnesota Coordinate System
Central Zone
Lambert Conformal Conic



LEGEND

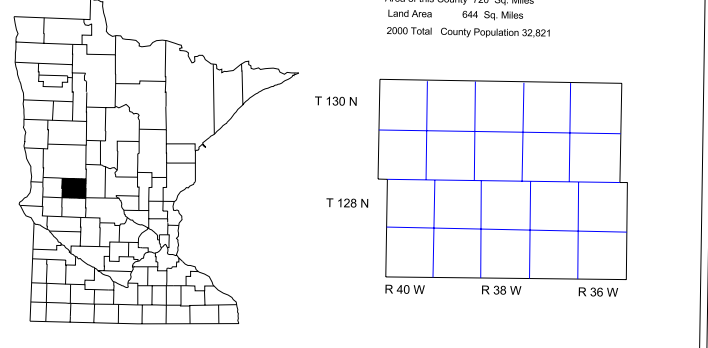
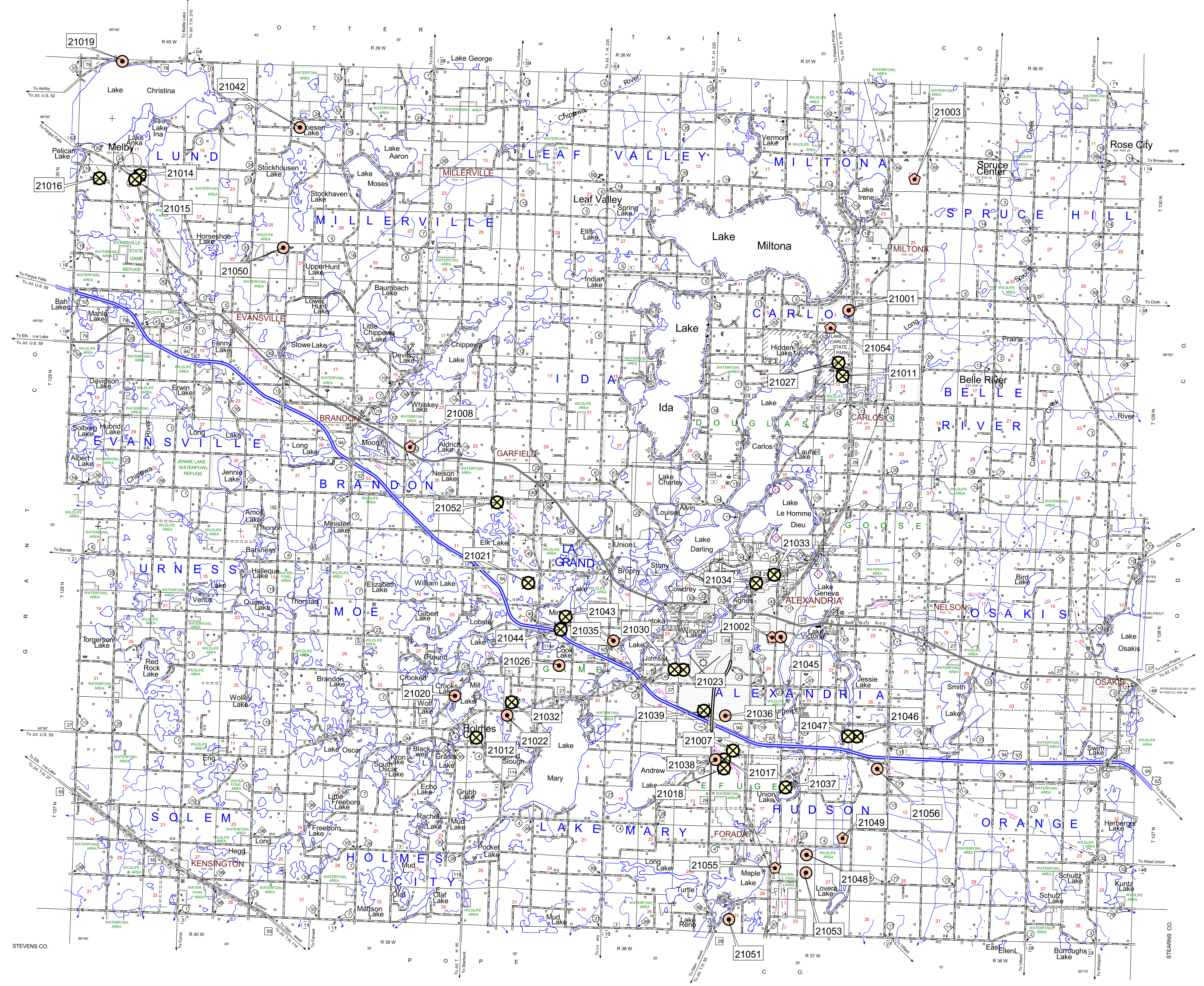
ROAD AND ROADWAY FEATURES	NAVIGATION	CONSERVATION	RECREATION	FARM AND DWELLING UNITS	INDUSTRIAL	COMMERCIAL	PUBLIC SERVICE FACILITIES	CITY CENTERS	MISCELLANEOUS MAP FEATURES	BOUNDARIES	DRAINAGE

Aggregate Source Legend

- Gravel Pit - Active
- Gravel Pit - Inactive
- Mn/DOT - Active
- Mn/DOT - Inactive
- Commercial Aggregate
- Rock Quarry

Source: Aggregate Unit
Office of Materials & Road Research
Minnesota Dept. of Transportation

4/18/2002



NOTE: ALL FEATURES EXCEPT TOWNSHIP BOUNDARIES AND CULTURE ARE CURRENT AS OF JANUARY 1, 2001.
NOTE: FOR DETAIL OF COUNTY STATE AND HIGHWAYS AND COUNTY ROADS IN INCORPORATED PLACES, SEE MAPS OF MUNICIPALITIES.