

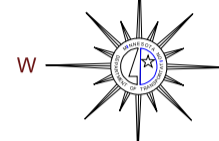
GENERAL HIGHWAY MAP BLUE EARTH COUNTY MINNESOTA

PREPARED BY THE
MINNESOTA DEPARTMENT OF TRANSPORTATION
PROGRAM SUPPORT GROUP
IN COOPERATION WITH
U.S. DEPARTMENT OF TRANSPORTATION
FEDERAL HIGHWAY ADMINISTRATION



2001
BASIC DATA - 1977

Projection:
Minnesota Coordinate System
South Zone
Lambert Conformal Conic
North American Datum of 1983



LEGEND

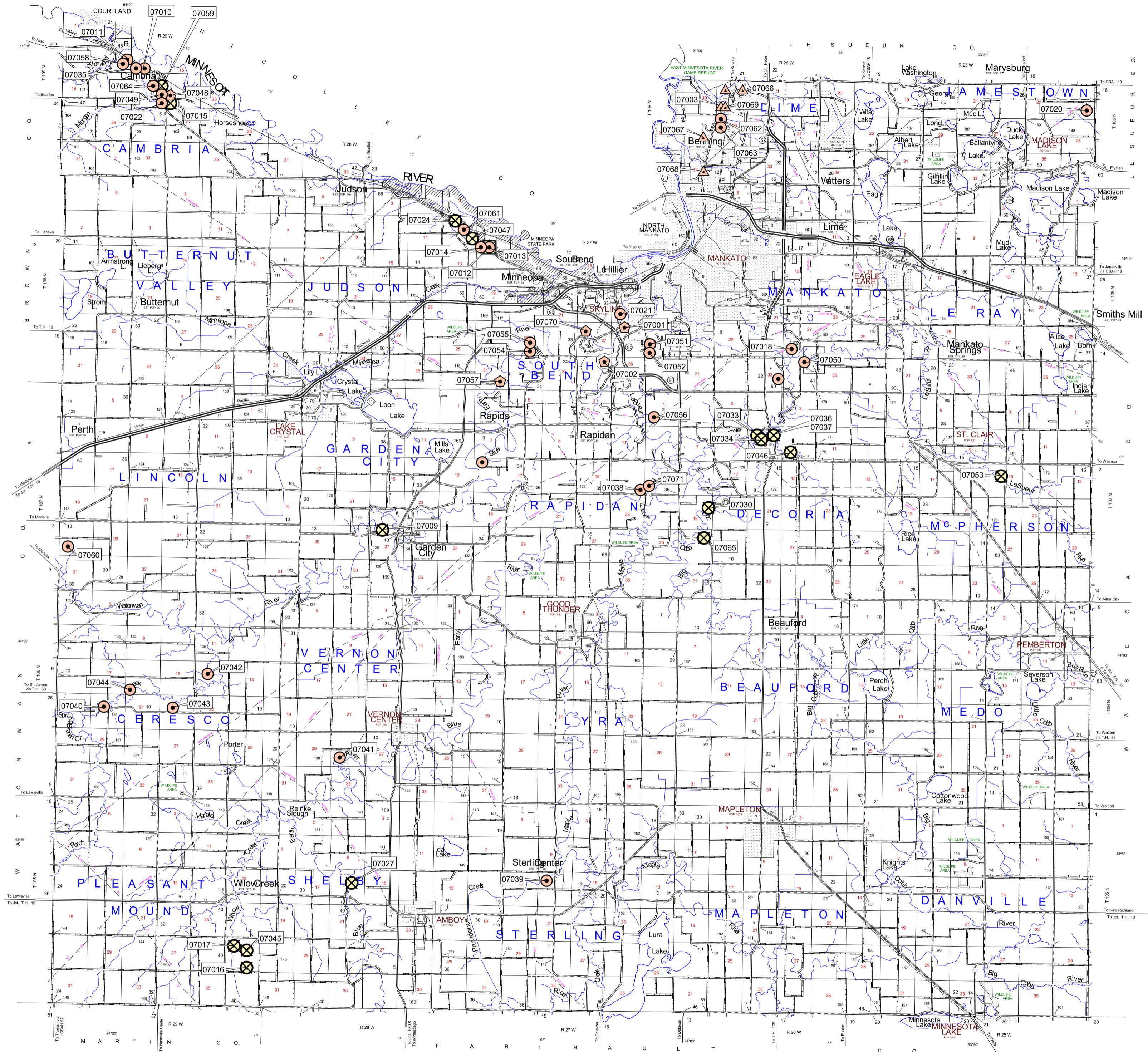
ROAD AND ROADWAY FEATURES	NAVIGATION
ROAD SYSTEM DESIGNATIONS	CONSERVATION
RAILROADS	RECREATION
AIRWAYS	FARM AND DWELLING UNITS
STRUCTURES	INDUSTRIAL
Other Structures	COMMERCIAL
BOUNDARIES	PUBLIC SERVICE FACILITIES
DRAINAGE	CITY CENTERS
MISCELLANEOUS MAP FEATURES	

Aggregate Source Legend

- Gravel Pit - Active
- Gravel Pit - Inactive
- Mn/DOT - Active
- Mn/DOT - Inactive
- Commercial Aggregate
- Rock Quarry

Source: Aggregate Unit
Office of Materials & Road Research
Minnesota Dept. of Transportation

9/20/2002



NOTE: ALL FEATURES EXCEPT TOWNSHIP ROADS AND
CULTURE ARE CURRENT AS OF JANUARY 1, 2001.
NOTE: FOR DETAIL OF COUNTY STATE AID HIGHWAYS AND COUNTY
ROADS IN INCORPORATED PLACES, SEE MAPS OF MUNICIPALITIES.