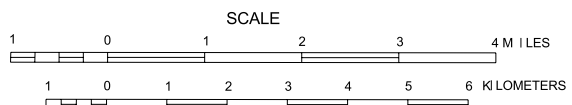


GENERAL HIGHWAY MAP BELTRAMI COUNTY MINNESOTA

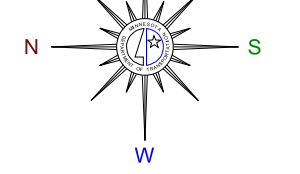
PREPARED BY THE
MINNESOTA DEPARTMENT OF TRANSPORTATION
PROGRAM SUPPORT GROUP
IN COOPERATION WITH
U.S. DEPARTMENT OF TRANSPORTATION
FEDERAL HIGHWAY ADMINISTRATION



2000
BASIC DATA - 1977

Projection:
Minnesota Coordinate System
North Zone
Lambert Conformal Conic

North American Datum
of 1983



LEGEND

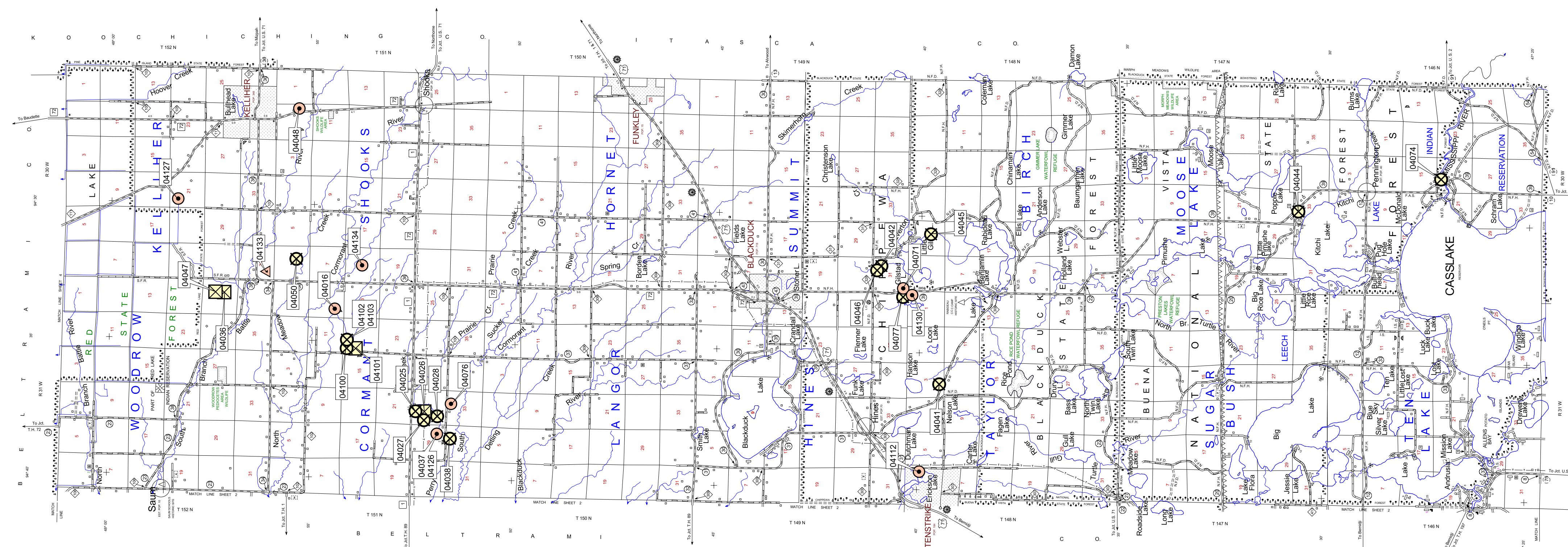
ROAD AND ROADWAY FEATURES	NAVIGATION	CONSERVATION	RECREATION	FARM AND DWELLING UNITS	INDUSTRIAL	COMMERCIAL	PUBLIC SERVICE FACILITIES
PROTECTED ROAD UNPAVED ROAD ROAD UNDER CONSTRUCTION ROAD IN UNCOMPLETED COMPACTS ROAD	SARGE LINES ON NATURAL STREAM SARGE LINES ON LAKE	FOREST RESERVE FOREST RESERVE (OPEN TO THE PUBLIC)	GOLF COURSE OR GOLF LINK RACING TRACK	FARM HOUSE STABLE BARN SHED	FACTORY OR INDUSTRIAL PLANT INDUSTRIAL DISTRICT INDUSTRIAL WAREHOUSE	STORE OR SMALL BUSINESS ESTABLISHMENT HOTEL RESTAURANT BAR OR THEATRE MUSEUM	CITY CENTER CITY CENTER UNINCORPORATED COMMUNITY UNINCORPORATED COMMUNITY
ROAD BETWEEN WHICH CHANGES ARE RELAYED IN ROUTE TABLE	RAILROAD TRACK	STATE FOREST	RAILROAD TRACK	RAILROAD TRACK	RAILROAD TRACK	RAILROAD TRACK	RAILROAD TRACK
ROAD BETWEEN WHICH CHANGES ARE RELAYED IN ROUTE TABLE	RAILROAD TRACK	STATE FOREST	RAILROAD TRACK	RAILROAD TRACK	RAILROAD TRACK	RAILROAD TRACK	RAILROAD TRACK

Aggregate Source Legend

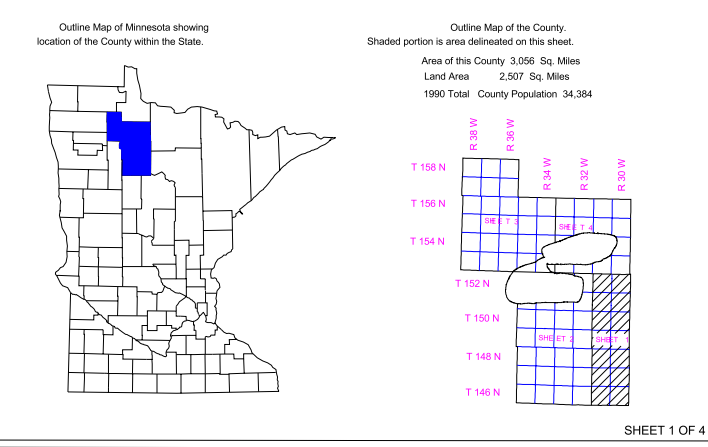
- Gravel Pit - Active
- Gravel Pit - Inactive
- Mn/DOT - Active
- Mn/DOT - Inactive
- Commercial Aggregate
- Rock Quarry

Source: Aggregate Unit
Office of Materials & Road Research
Minnesota Dept. of Transportation

5/28/2003



* NOTE: ALL FEATURES EXCEPT TOWNSHIP ROADS AND CULTURE ARE CURRENT AS OF JANUARY 1, 2000.
NOTE: FOR DETAIL OF COUNTY STATE AID HIGHWAYS AND COUNTY ROADS IN INCORPORATED PLACES, SEE MAPS OF MUNICIPALITIES.



Outline Map of the County
Shaded portion is area delineated on this sheet.
Area of the County: 2,036 Sq. Miles
Land Area: 2,007 Sq. Miles
1990 Total County Population: 34,384