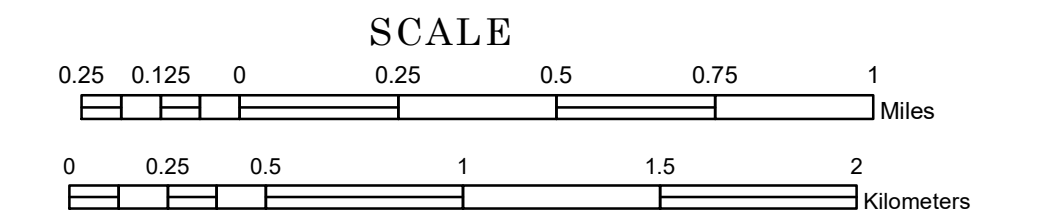


TOWNSHIP OF SOMERSET

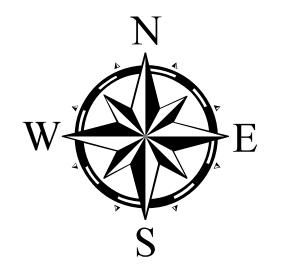
PREPARED BY THE
MINNESOTA DEPARTMENT OF TRANSPORTATION
OFFICE OF TRANSPORTATION SYSTEM MANAGEMENT

IN COOPERATION WITH
U.S. DEPARTMENT OF TRANSPORTATION
FEDERAL HIGHWAY ADMINISTRATION



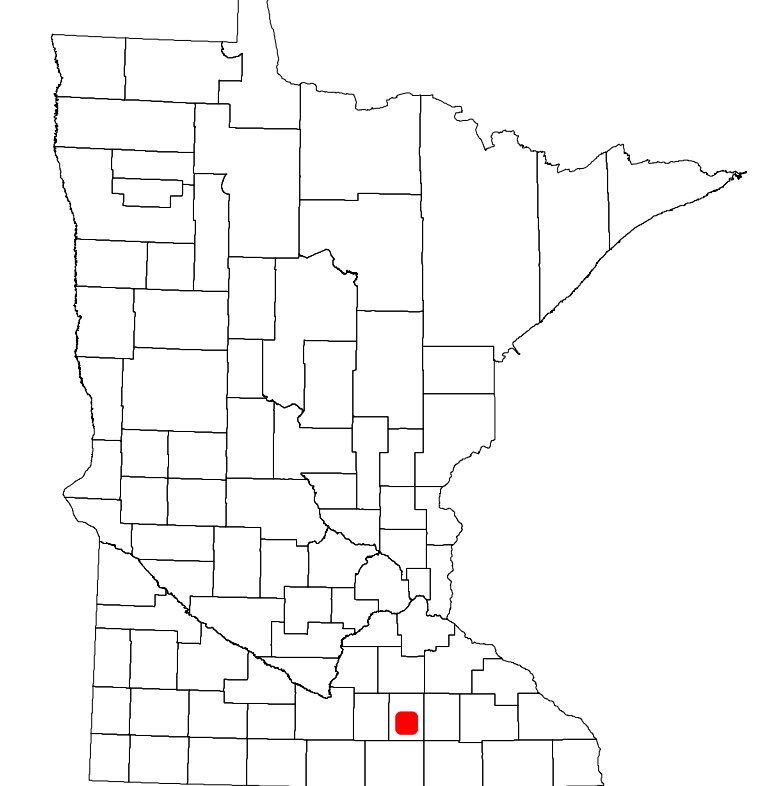
2023

Projection:
Transverse Mercator
NAD 1986
UTM Zone 15

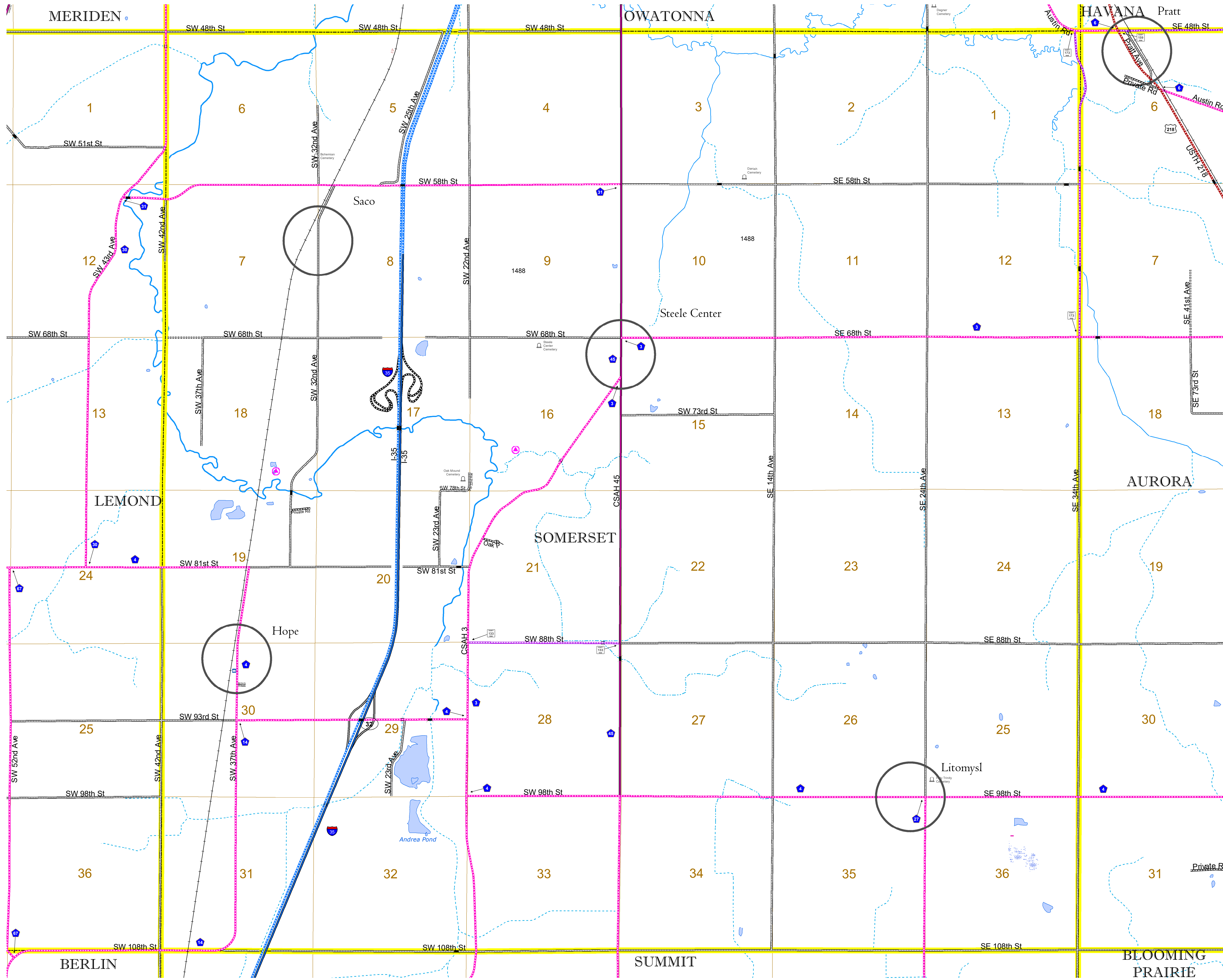


North American Datum
of 1986

ROAD AND ROADWAY FEATURES	
INTERSTATE	CONCRETE
US HIGHWAY	BITUMINOUS
MN HIGHWAY	GRAVEL
COUNTY STATE AID HIGHWAY	DIRT/UNIMPROVED
COUNTY ROAD	OTHER
TOWNSHIP ROAD	UNKNOWN
UNORGANIZED TERRITORY ROAD	UNKNOWN
OTHER ROADS	RAMP OR CONNECTOR
Municipal	INTERSTATE EXIT
Private	GREAT RIVER ROAD
National Monument	RAILROAD AND RAILWAY FEATURES
National Wildlife Refuge	COMMERCIAL AIRPORT
State Park	GENERAL AIRPORT
Preserve	AIRSTRIP
	SEAPLANE
	AIRPORT RUNWAY
	AVIATION FEATURES
	TRIBAL LAND
	STATE OF MINNESOTA
	COUNTY
	MUNICIPALITY
	UNORGANIZED TERRITORY
	FEDERAL ADJUSTED URBAN AREA (2014)
	CIVIL TOWNSHIP
	CONGRESSIONAL TOWNSHIP
	SECTION
	MILITARY
	VOYAGEURS NATIONAL PARK
	BOUNDARY WATERS CANOE AREA WILDERNESS
	STATE PARK
	REGIONAL PARK
	NATIONAL FOREST
	NATIONAL AND STATE FOREST
	STATE FOREST
	NATIONAL TRAIL
	WILDLIFE REFUGUE AREA
	WILDLIFE MANAGEMENT AREA
	HYDROLOGIC FEATURES
	RIVER OR STREAM (PERENNIAL)
	LAKE, POND OR RESERVOIR
	STREAM (INTERMITTENT)
	DRAINAGE DITCH
	WETLAND
	ISLAND OR LAND
	REGIONAL WATERSHED



Population (U.S. Census 2010): 732



To request information from this document in an alternative format, call 651-366-4718 or 1-800-657-3774 (Greater Minnesota); 711 or 1-800-627-3529 (Minnesota Relay). You may also send an e-mail to ADAREquest.dot@state.mn.us. (Please request at least one week in advance.)