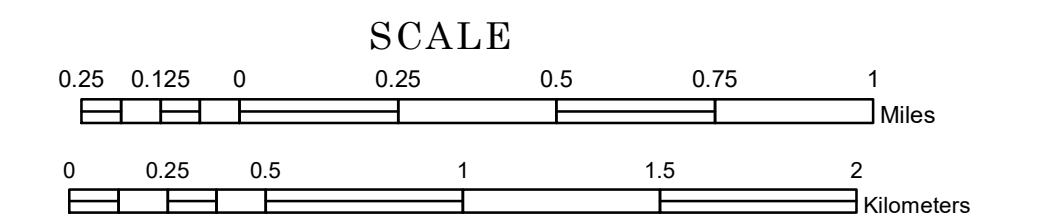


TOWNSHIP OF STONEY BROOK

PREPARED BY THE
MINNESOTA DEPARTMENT OF TRANSPORTATION
OFFICE OF TRANSPORTATION SYSTEM MANAGEMENT

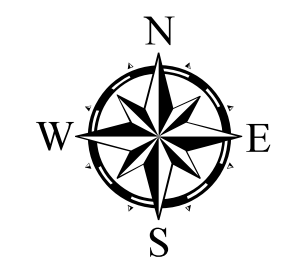
IN COOPERATION WITH
U.S. DEPARTMENT OF TRANSPORTATION
FEDERAL HIGHWAY ADMINISTRATION



1 in = 1,600 ft

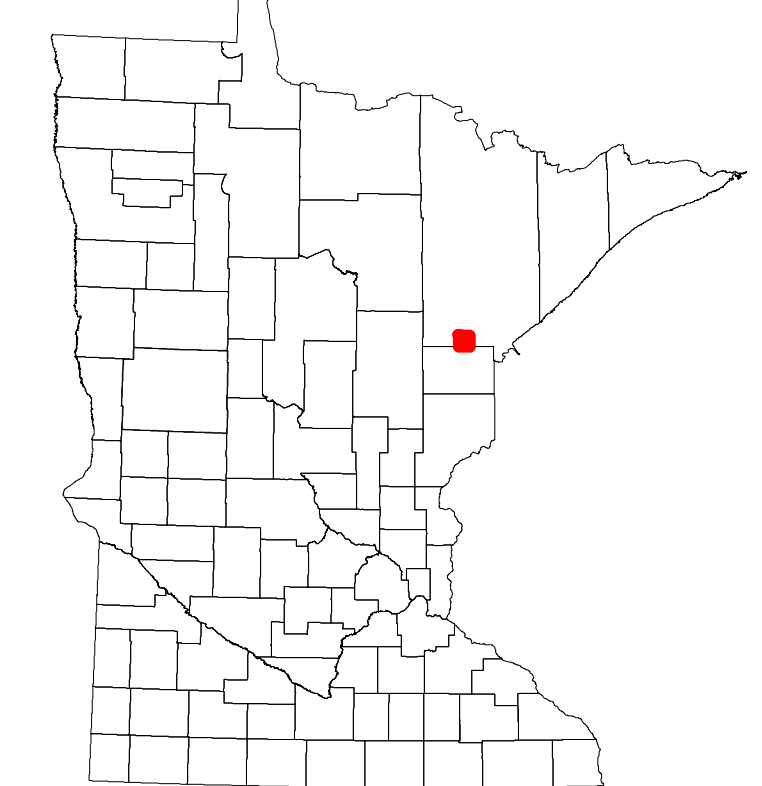
2024

Projection:
Transverse Mercator
NAD 1986
UTM Zone 15

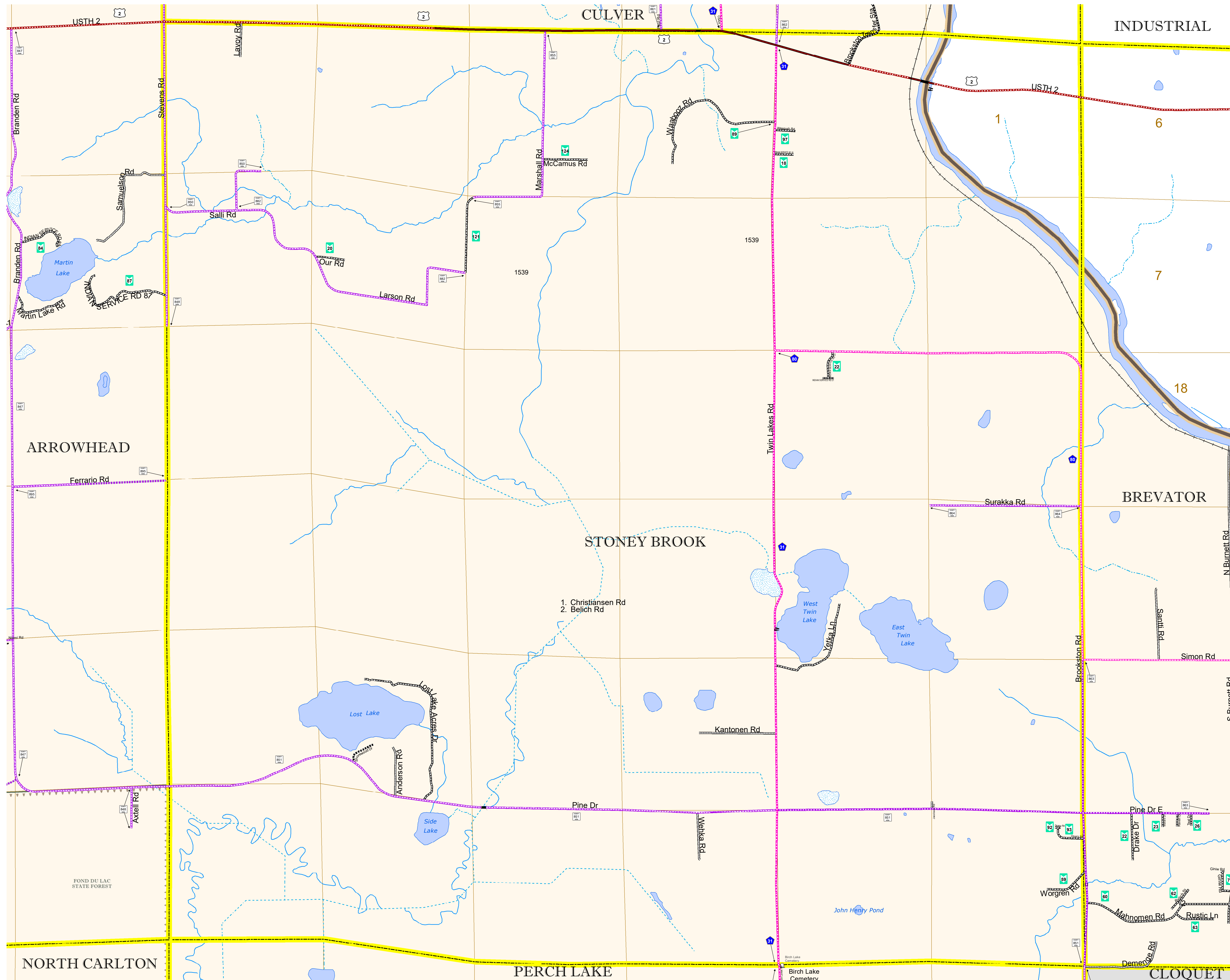


North American Datum
of 1986

ROAD AND ROADWAY FEATURES		BOUNDARY FEATURES	
INTERSTATE	CONCRETE	TRIBAL LAND	STATE OF MINNESOTA
US HIGHWAY	BITUMINOUS	COUNTY	MUNICIPALITY
MN HIGHWAY	GRAVEL	UNINCORPORATED TOWNSHIP	CIVIL TOWNSHIP
COUNTY STATE AID HIGHWAY	DIRT/UNIMPROVED	CONGRESSIONAL TOWNSHIP	SECTION
COUNTY ROAD	OTHER	MILITARY	VOYAGEURS NATIONAL PARK
TOWNSHIP ROAD	UNKNOWN	BOUNDARY WATERS CANOE AREA WILDERNESS	STATE PARK
UNORGANIZED TERRITORY ROAD		NATIONAL FOREST	NATIONAL FOREST
OTHER ROADS		NATIONAL AND STATE FOREST	STATE FOREST
Municipal	RAMP OR CONNECTOR	WILDLIFE REFUGUE AREA	WILDLIFE MANAGEMENT AREA
Private	INTERSTATE EXIT	HYDROLOGIC FEATURES	RIVER OR STREAM (PERENNIAL)
Nature Service		LAKE, POND OR RESERVOIR	STREAM (INTERMITTENT)
Mulden		DRAINAGE DITCH	WETLAND
		HISTORIC DISTRICT	ISLAND OR LAND
		HISTORIC SITE	REGIONAL WATERSHED
		MONUMENT	



Population (U.S. Census 2010): 332



To request information from this document in an alternative format, call 651-366-4718 or 1-800-657-3774 (Greater Minnesota); 711 or 1-800-627-3529 (Minnesota Relay). You may also send an e-mail to ADRequest.dot@state.mn.us. (Please request at least one week in advance.)