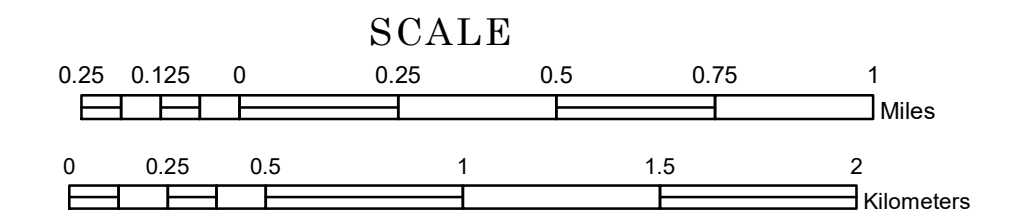


# TOWNSHIP OF FRENCH

PREPARED BY THE  
MINNESOTA DEPARTMENT OF TRANSPORTATION  
OFFICE OF TRANSPORTATION SYSTEM MANAGEMENT

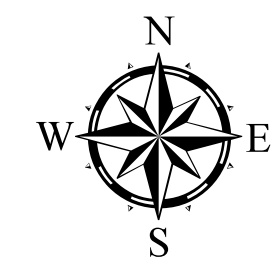
IN COOPERATION WITH  
U.S. DEPARTMENT OF TRANSPORTATION  
FEDERAL HIGHWAY ADMINISTRATION



1 in = 1,600 ft

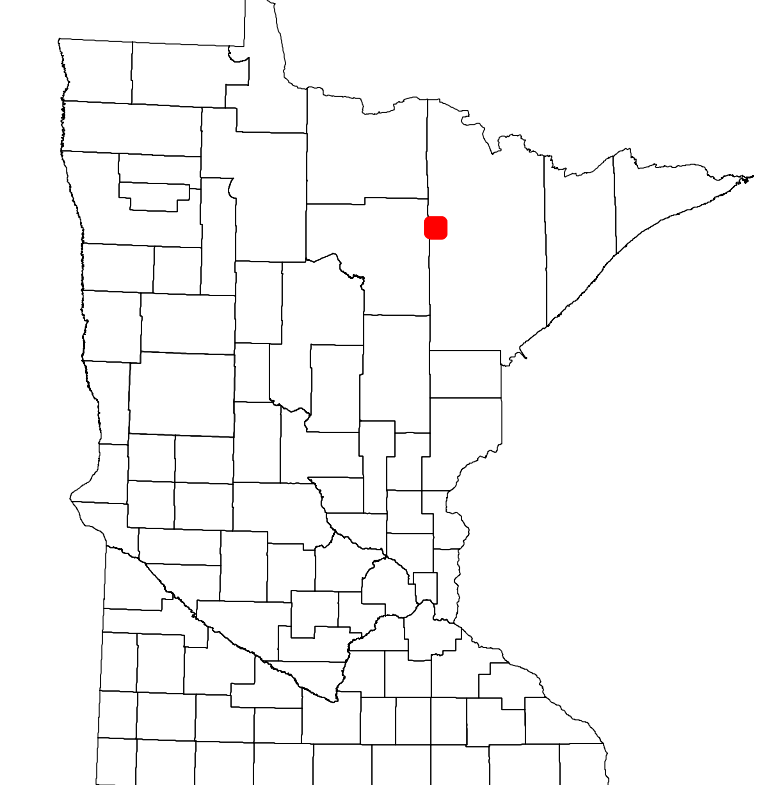
2024

Projection:  
Transverse Mercator  
NAD 1986  
UTM Zone 15

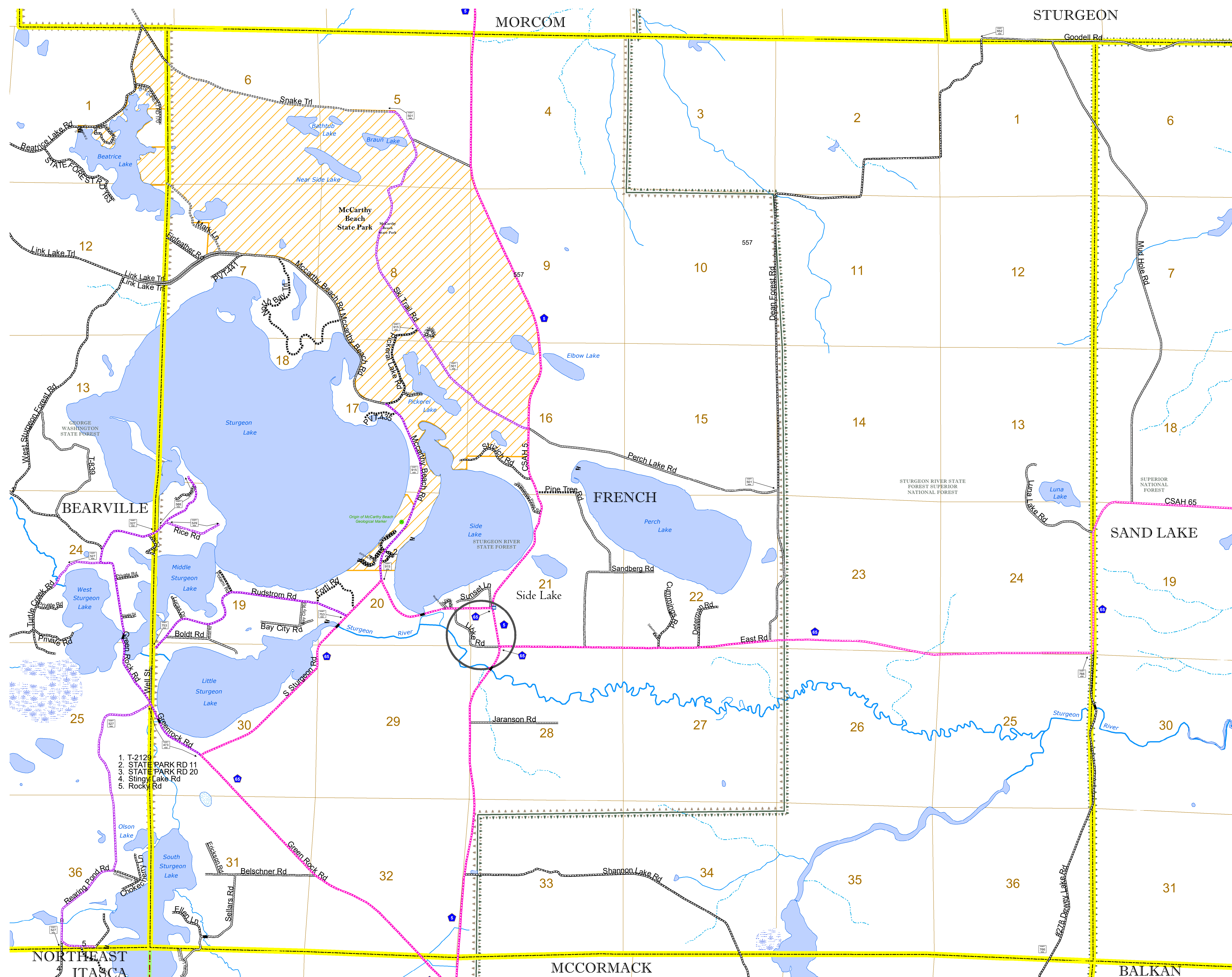


North American Datum  
of 1986

ROAD AND ROADWAY FEATURES		AVIATION FEATURES	
INTERSTATE	CONCRETE	COMMERCIAL AIRPORT	GENERAL AIRPORT
US HIGHWAY	BITUMINOUS	AIRSTRIP	SEAPLANE
MN HIGHWAY	GRAVEL	AIRPORT RUNWAY	BOUNDARY FEATURES
COUNTY STATE AID HIGHWAY	DIRT/UNIMPROVED	TRIAL LAND	TRIBAL LAND
COUNTY ROAD	OTHER	STATE OF MINNESOTA	COUNTY
TOWNSHIP ROAD	UNKNOWN	MUNICIPALITY	MUNICIPALITY
UNORGANIZED TERRITORY ROAD		UNORGANIZED TERRITORY	UNORGANIZED TERRITORY
OTHER ROADS		FEDERAL ADJUSTED URBAN AREA (2014)	CIVIL TOWNSHIP
Municipal		Congressional Township	Congressional Township
Private		Section	Military
National Monument		Voyageurs National Park	Voyageurs National Park
State Forest		Boundary Waters Canoe Area Wilderness	State Park
Nature Service		National Forest	National Forest
National Park		National and State Forest	State Forest
National Wildlife Refuge		Wildlife Refuge Area	Wildlife Management Area
State Park		Hydrologic Features	River or Stream (Perennial)
Present		Stream (Intermittent)	Lake, Pond or Reservoir
		Drainage Ditch	Wetland
		Island or Land	Regional Watershed



Population (U.S. Census 2010): 567



1. T-2129
2. STATE PARK RD 11
3. STATE PARK RD 20
4. Stingy Lake Rd
5. Rocky Rd

To request information from this document in an alternative format, call 651-366-4718 or 1-800-657-3774 (Greater Minnesota); 711 or 1-800-627-3529 (Minnesota Relay). You may also send an e-mail to [ADArequest.dot@state.mn.us](mailto:ADArequest.dot@state.mn.us). (Please request at least one week in advance.)