

POT SHOT LAKE
POTSHOT LAKE

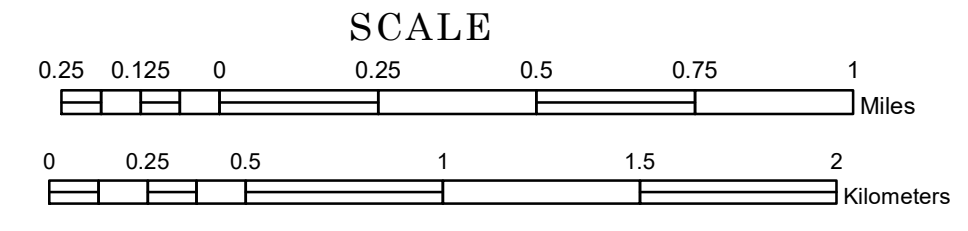
VAN BUREN

NESS

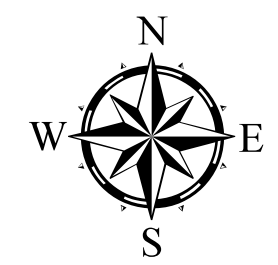
TOWNSHIP OF FLOODWOOD

PREPARED BY THE
MINNESOTA DEPARTMENT OF TRANSPORTATION
OFFICE OF TRANSPORTATION SYSTEM MANAGEMENT

IN COOPERATION WITH
U.S. DEPARTMENT OF TRANSPORTATION
FEDERAL HIGHWAY ADMINISTRATION

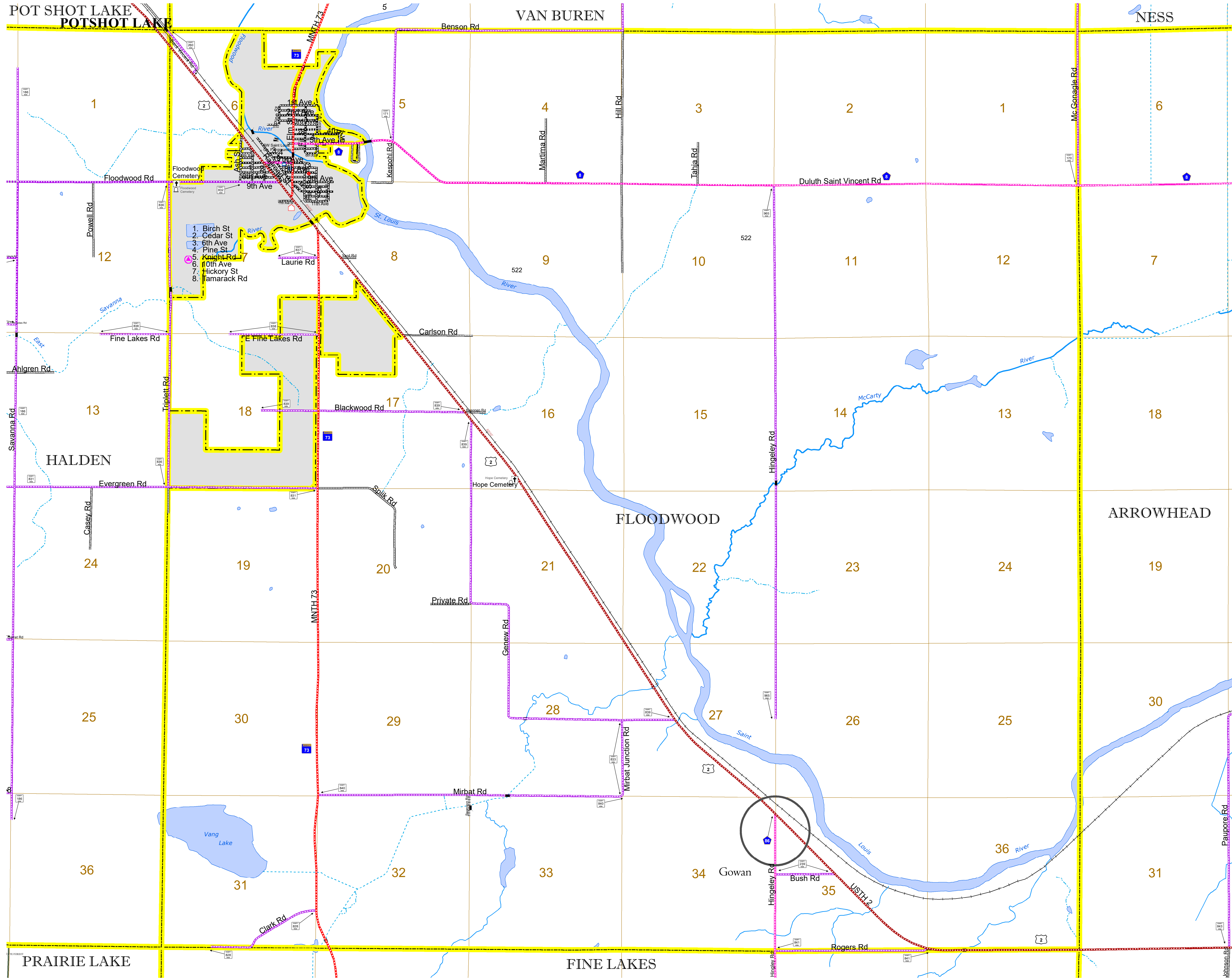


1 in = 1,600 ft
2024

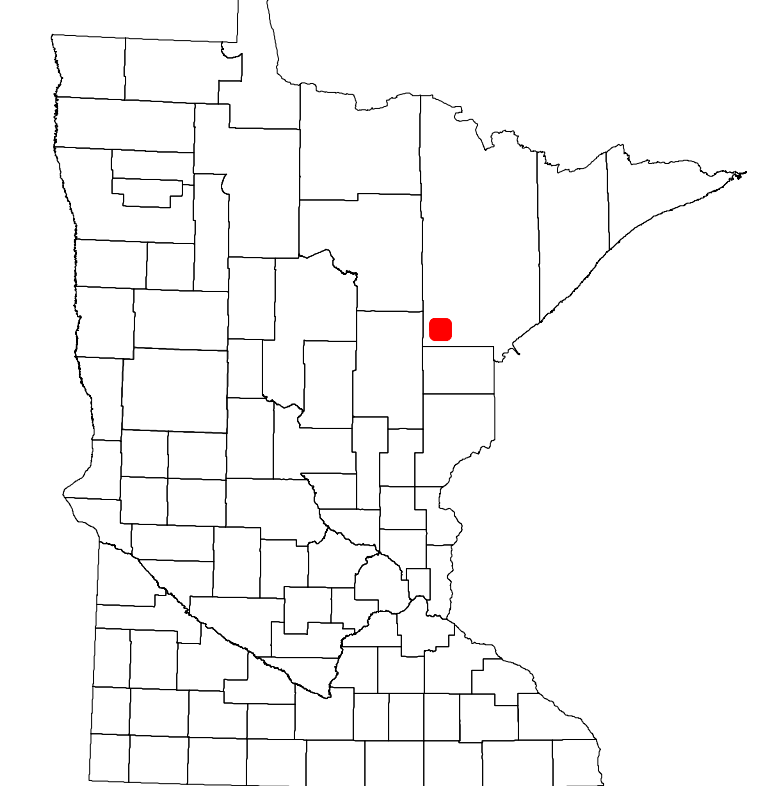


Projection:
Transverse Mercator
NAD 1986
UTM Zone 15

North American Datum
of 1986



ROAD AND ROADWAY FEATURES				
INTERSTATE	CONCRETE			
US HIGHWAY	BITUMINOUS			
MN HIGHWAY	GRAVEL			
COUNTY STATE AID HIGHWAY	DIRT/UNIMPROVED			
COUNTY ROAD	OTHER			
TOWNSHIP ROAD	UNKNOWN			
UNORGANIZED TERRITORY ROAD				
OTHER ROADS	RAMP OR CONNECTOR			
Municipal	Private	National Monument	State Forest	Interstate Exit
Nature Service	National Park	National Wildlife	State Game	Aviation Features
Museum	National Forest	State Park	Present	Commercial Airport
				General Airport
				Airstrip
				Seaplane
				Airport Runway
				Boundary Features
				Tribal Land
				State of Minnesota
				County
				Municipality
				Unorganized Territory
				Federal Adjusted Urban Area (2014)
				Civil Township
				Congressional Township
				Section
				Military
				Voyageurs National Park
				Boundary Waters Canoe Area Wilderness
				State Park
				Regional Park
				National Forest
				National and State Forest
				State Forest
				National Trail
				Wildlife Refuge Area
				Wildlife Management Area
				Hydrologic Features
				River or Stream (Perennial)
				Lake, Pond or Reservoir
				Stream (Intermittent)
				Drainage Ditch
				Wetland
				Island or Land
				Regional Watershed



Population (U.S. Census 2010): 280

To request information from this document in an alternative format, call 651-366-4718 or 1-800-657-3774 (Greater Minnesota); 711 or 1-800-627-3529 (Minnesota Relay). You may also send an e-mail to ADRequest.dot@state.mn.us. (Please request at least one week in advance.)