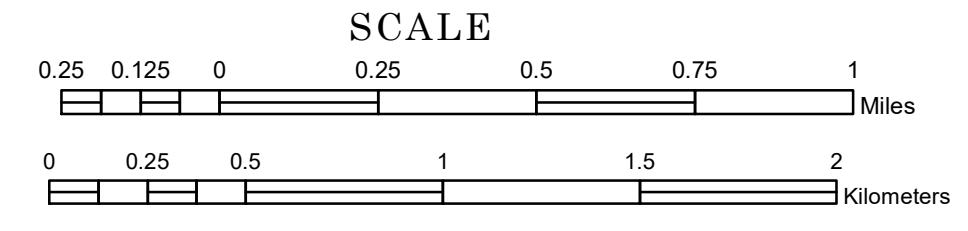


TOWNSHIP OF SILVERTON

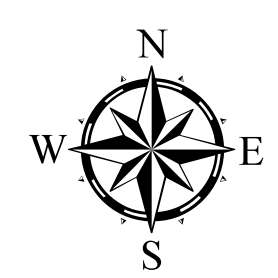
PREPARED BY THE
MINNESOTA DEPARTMENT OF TRANSPORTATION
OFFICE OF TRANSPORTATION SYSTEM MANAGEMENT

IN COOPERATION WITH
U.S. DEPARTMENT OF TRANSPORTATION
FEDERAL HIGHWAY ADMINISTRATION



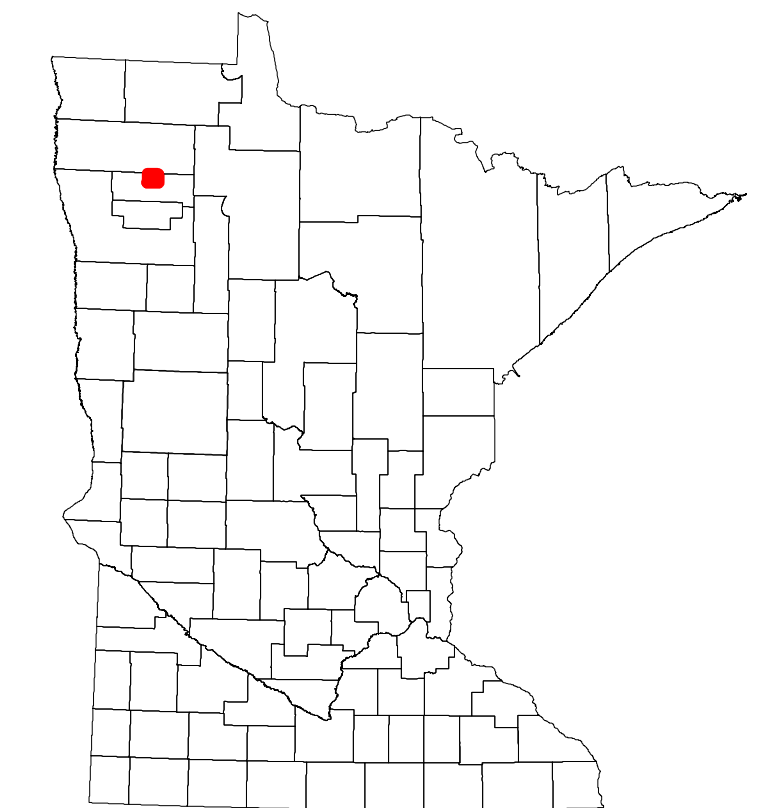
2024

Projection:
Transverse Mercator
NAD 1986
UTM Zone 15

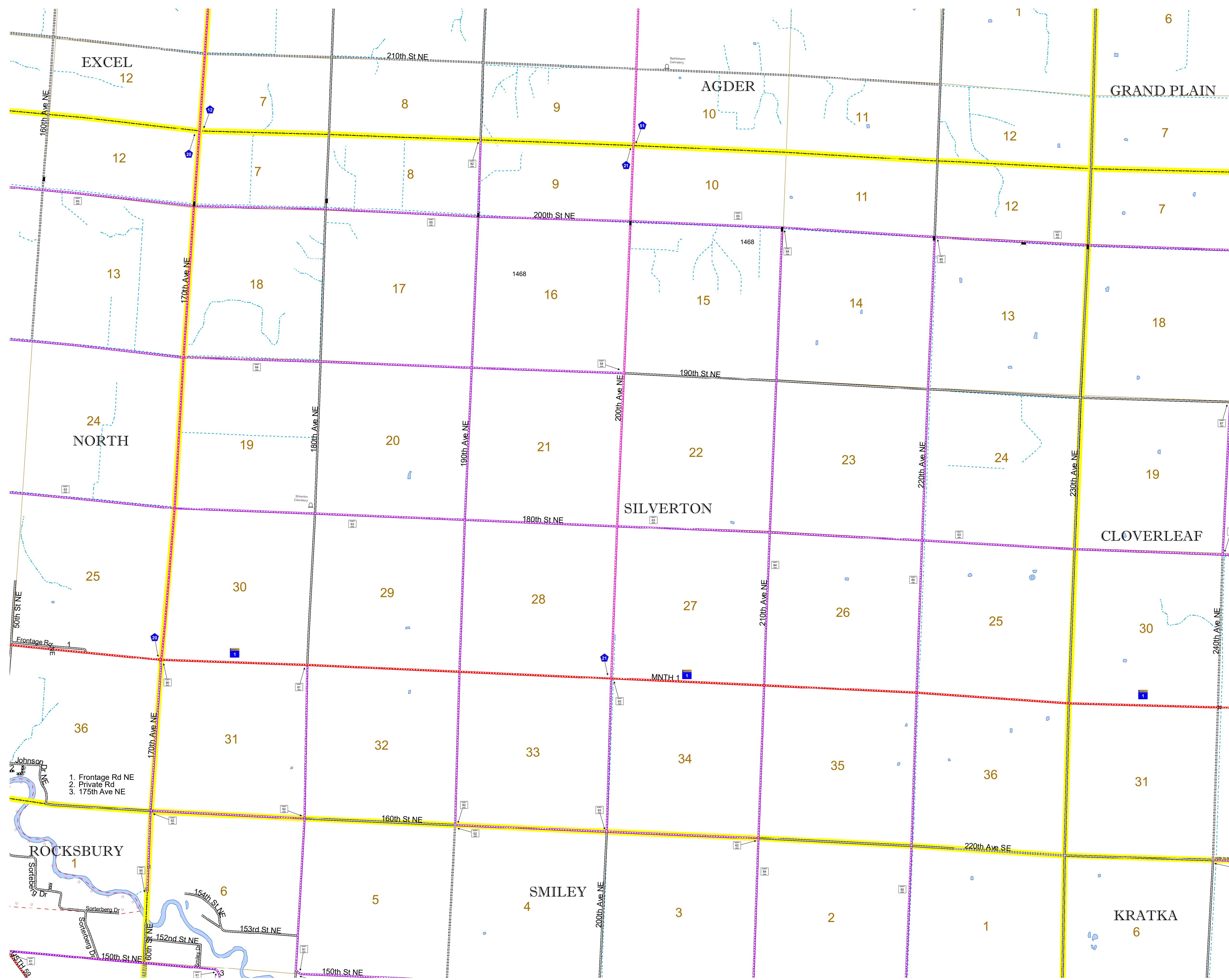


North American Datum
of 1986

ROAD AND ROADWAY FEATURES		BOUNDARY FEATURES	
INTERSTATE	CONCRETE	TRIAL LAND	TRIBAL LAND
US HIGHWAY	BITUMINOUS	STATE OF MINNESOTA	COUNTY
MN HIGHWAY	GRAVEL	MUNICIPALITY	MUNICIPALITY
COUNTY STATE AID HIGHWAY	DIRT/UNIMPROVED	UNINCORPORATED	UNINCORPORATED
COUNTY ROAD	OTHER	FEDERAL ADJUSTED URBAN AREA (2014)	CIVIL TOWNSHIP
TOWNSHIP ROAD	UNKNOWN	CONGRESSIONAL TOWNSHIP	SECTION
UNORGANIZED TERRITORY ROAD		MILITARY	MILITARY
OTHER ROADS		VOYAGEURS NATIONAL PARK	VOYAGEURS NATIONAL PARK
Municipal	RAMP OR CONNECTOR	BOUNDARY WATERS GANDE AREA WILDERNESS	STATE PARK
Private	INTERSTATE EXIT	REGIONAL PARK	REGIONAL PARK
National Monument	GREAT RIVER ROAD	NATIONAL FOREST	NATIONAL FOREST
National Park		NATIONAL AND STATE FOREST	NATIONAL FOREST
National Wildlife Refuge		STATE FOREST	STATE FOREST
State Game		NATIONAL TRAIL	NATIONAL TRAIL
Museum		WILDLIFE REFUGE AREA	WILDLIFE REFUGE AREA
		WILDLIFE MANAGEMENT AREA	WILDLIFE MANAGEMENT AREA
		HYDROLOGIC FEATURES	HYDROLOGIC FEATURES
		RIVER OR STREAM (PERMANENT)	RIVER OR STREAM (PERMANENT)
		LAKE, POND OR RESERVOIR	LAKE, POND OR RESERVOIR
		STREAM (INTERMITTENT)	STREAM (INTERMITTENT)
		DRAINAGE DITCH	DRAINAGE DITCH
		WETLAND	WETLAND
		ISLAND OR LAND	ISLAND OR LAND
		REGIONAL WATERSHED	REGIONAL WATERSHED



Population (U.S. Census 2010): 187



To request information from this document in an alternative format, call 651-366-4718 or 1-800-657-3774 (Greater Minnesota); 711 or 1-800-627-3529 (Minnesota Relay). You may also send an e-mail to ADRequest.dot@state.mn.us. (Please request at least one week in advance.)