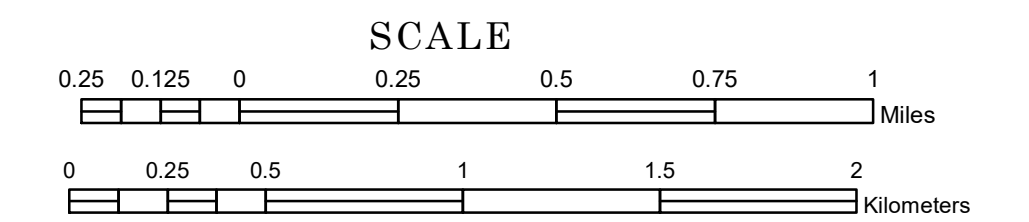


TOWNSHIP OF HIGHLANDING

PREPARED BY THE
MINNESOTA DEPARTMENT OF TRANSPORTATION
OFFICE OF TRANSPORTATION SYSTEM MANAGEMENT

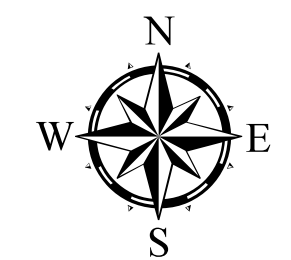
IN COOPERATION WITH
U.S. DEPARTMENT OF TRANSPORTATION
FEDERAL HIGHWAY ADMINISTRATION



1 in = 1,600 ft

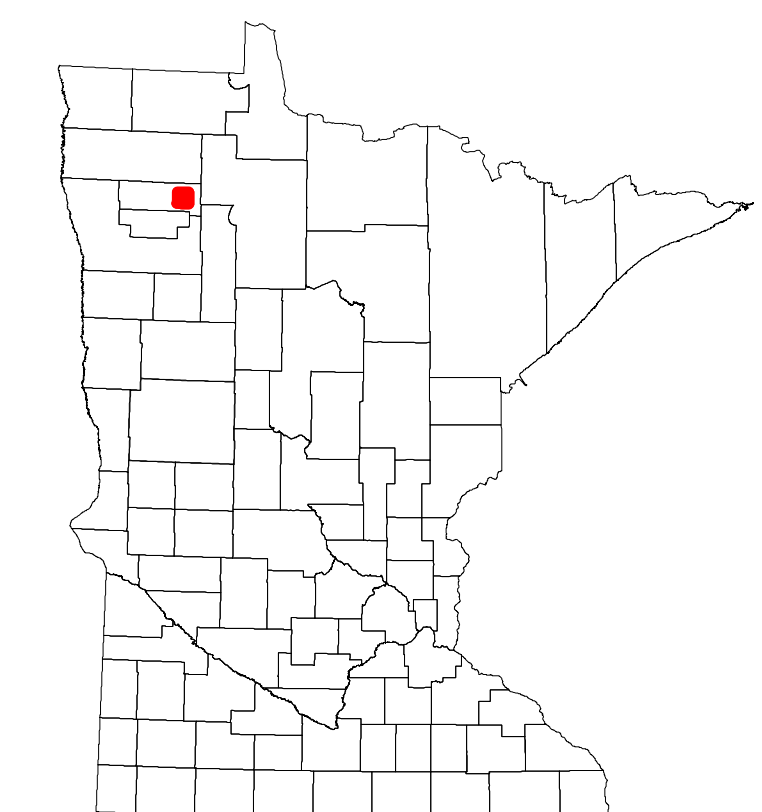
2024

Projection:
Transverse Mercator
NAD 1986
UTM Zone 15

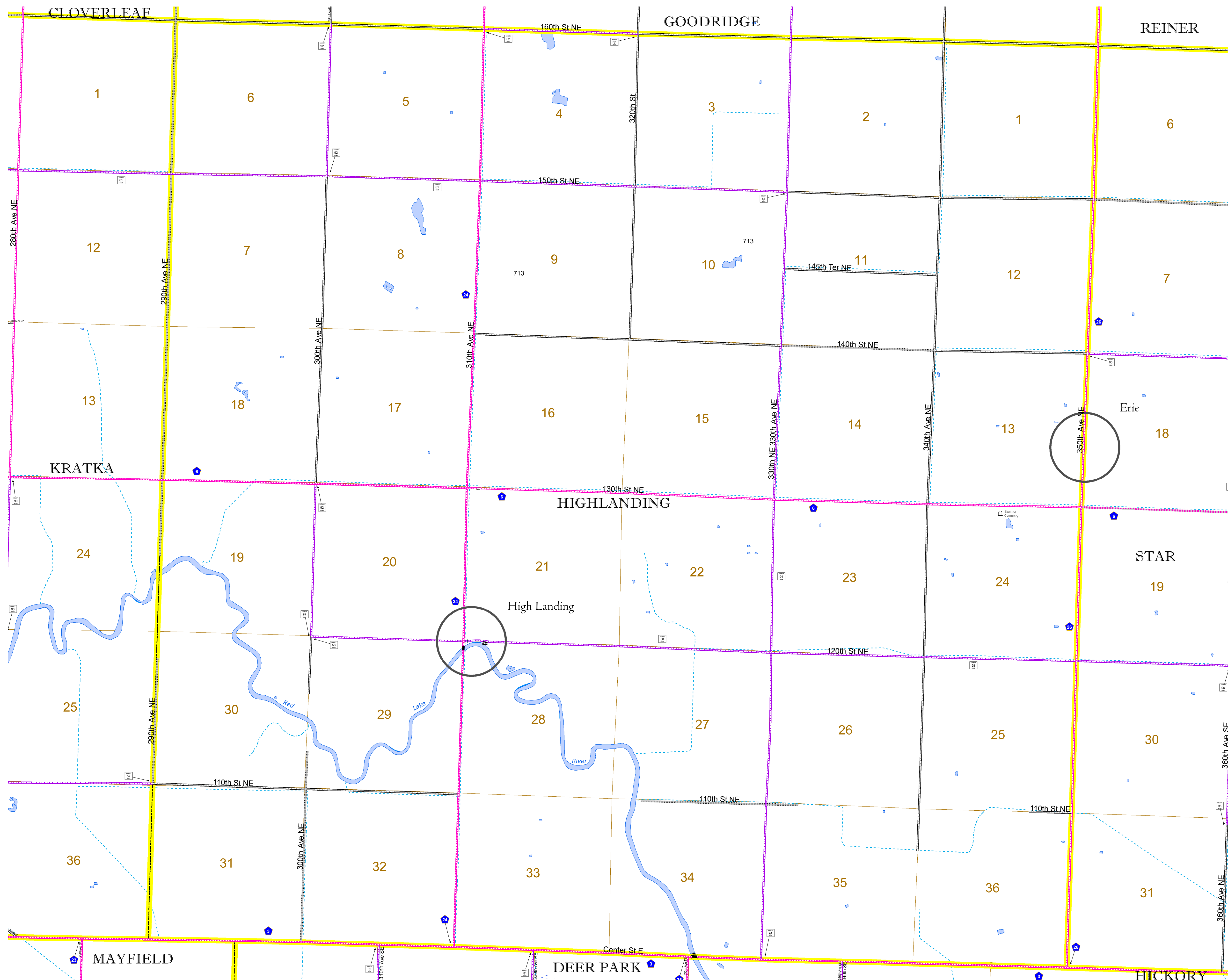


North American Datum
of 1986

ROAD AND ROADWAY FEATURES		AVIATION FEATURES	
INTERSTATE	CONCRETE	COMMERCIAL AIRPORT	GENERAL AIRPORT
US HIGHWAY	BITUMINOUS	AIRSTRIP	SEAPLANE
MN HIGHWAY	GRAVEL	AIRPORT RUNWAY	BOUNDARY FEATURES
COUNTY STATE AID HIGHWAY	DIRT/UNIMPROVED	TRAIL	TRIBAL LAND
COUNTY ROAD	OTHER	STATE OF MINNESOTA	COUNTY
TOWNSHIP ROAD	UNKNOWN	MUNICIPALITY	MUNICIPALITY
UNORGANIZED TERRITORY ROAD	RAMP OR CONNECTOR	UNORGANIZED TERRITORY	FEDERAL ADJUSTED URBAN AREA (2014)
OTHER ROADS	INTERSTATE EXIT	CITY TOWNSHIP	CITY TOWNSHIP
Municipal	INTERSTATE EXIT	CONGRESSIONAL TOWNSHIP	CONGRESSIONAL TOWNSHIP
Private	INTERSTATE EXIT	SECTION	MILITARY
National Monument	INTERSTATE EXIT	VOYAGEURS NATIONAL PARK	VOYAGEURS NATIONAL PARK
National Wildlife Refuge	INTERSTATE EXIT	BOUNDARY WATERS CANOE AREA WILDERNESS	BOUNDARY WATERS CANOE AREA WILDERNESS
State Park	INTERSTATE EXIT	STATE PARK	STATE PARK
State Forest	INTERSTATE EXIT	NATIONAL FOREST	NATIONAL FOREST
State Forest	INTERSTATE EXIT	NATIONAL AND STATE FOREST	NATIONAL AND STATE FOREST
State Forest	INTERSTATE EXIT	STATE FOREST	STATE FOREST
State Forest	INTERSTATE EXIT	NATIONAL TRAIL	NATIONAL TRAIL
State Forest	INTERSTATE EXIT	WILDLIFE REFUGUE AREA	WILDLIFE REFUGUE AREA
State Forest	INTERSTATE EXIT	WILDLIFE MANAGEMENT AREA	WILDLIFE MANAGEMENT AREA
State Forest	INTERSTATE EXIT	HYDROLOGIC FEATURES	HYDROLOGIC FEATURES
State Forest	INTERSTATE EXIT	RIVER OR STREAM (PERMANENT)	RIVER OR STREAM (PERMANENT)
State Forest	INTERSTATE EXIT	LAKE, POND OR RESERVOIR	LAKE, POND OR RESERVOIR
State Forest	INTERSTATE EXIT	STREAM (INTERMITTENT)	STREAM (INTERMITTENT)
State Forest	INTERSTATE EXIT	DRAINAGE DITCH	DRAINAGE DITCH
State Forest	INTERSTATE EXIT	WETLAND	WETLAND
State Forest	INTERSTATE EXIT	ISLAND OR LAND	ISLAND OR LAND
State Forest	INTERSTATE EXIT	REGIONAL WATERSHED	REGIONAL WATERSHED



Population (U.S. Census 2010): 194



To request information from this document in an alternative format, call 651-366-4718 or 1-800-657-3774 (Greater Minnesota); 711 or 1-800-627-3529 (Minnesota Relay). You may also send an e-mail to ADArequest.dot@state.mn.us. (Please request at least one week in advance.)