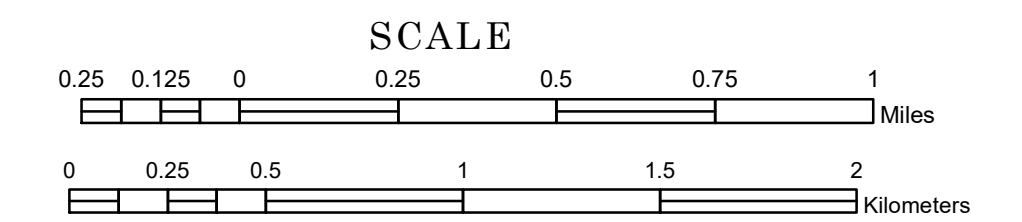


TOWNSHIP OF FOREST PRAIRIE

PREPARED BY THE
MINNESOTA DEPARTMENT OF TRANSPORTATION
OFFICE OF TRANSPORTATION SYSTEM MANAGEMENT

IN COOPERATION WITH
U.S. DEPARTMENT OF TRANSPORTATION
FEDERAL HIGHWAY ADMINISTRATION



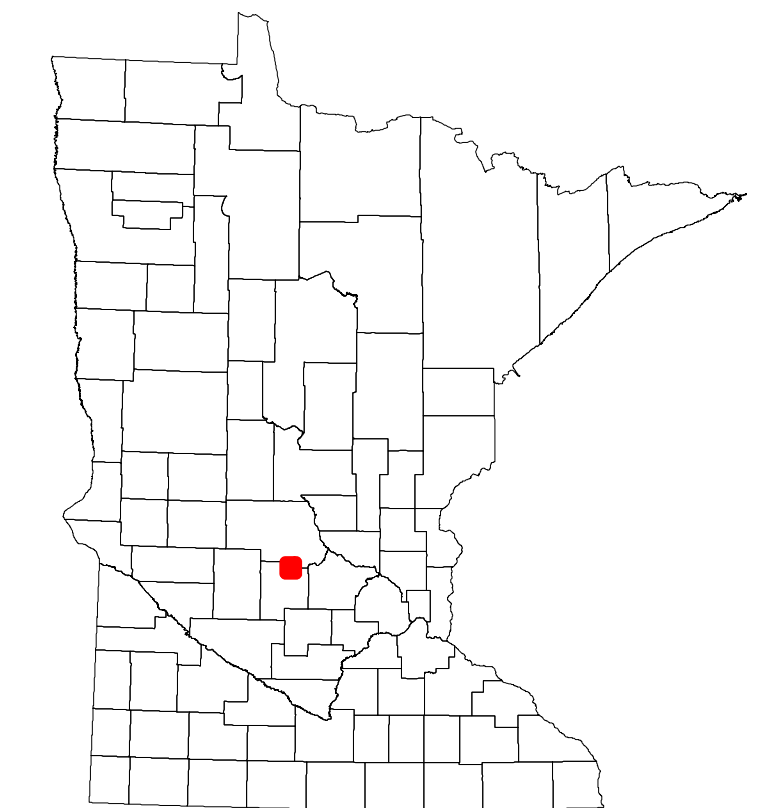
2023

Projection:
Transverse Mercator
NAD 1986
UTM Zone 15

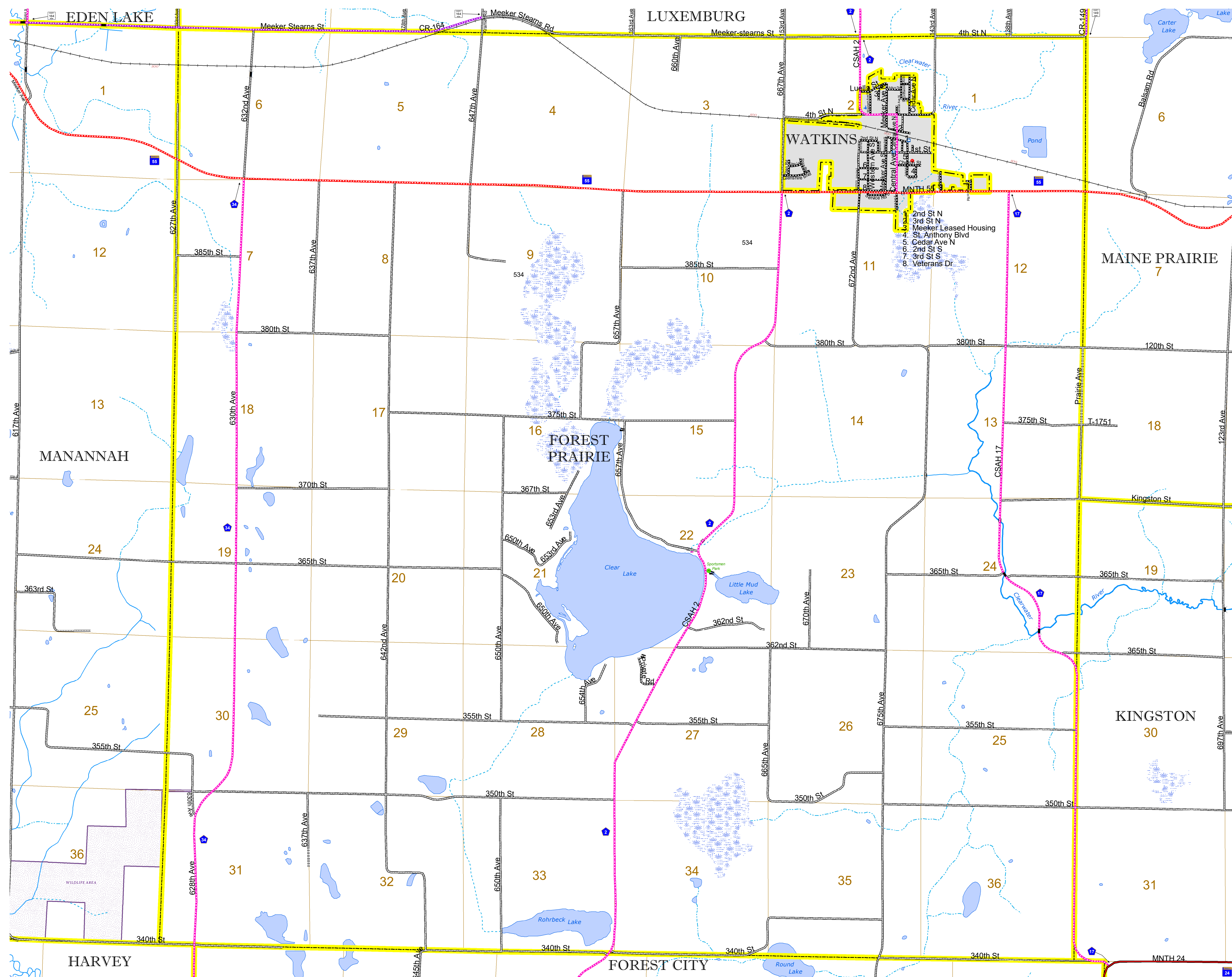


North American Datum
of 1986

ROAD AND ROADWAY FEATURES		BOUNDARY FEATURES	
INTERSTATE	CONCRETE	TRIAL LAND	STATE OF MINNESOTA
US HIGHWAY	BITUMINOUS	COUNTY	MUNICIPALITY
MN HIGHWAY	GRAVEL	UNINCORPORATED TOWNSHIP	CIVIL TOWNSHIP
COUNTY STATE AID HIGHWAY	DIRT/UNIMPROVED	FEDERAL ADJUSTED URBAN AREA (2014)	CONGRESSIONAL TOWNSHIP
COUNTY ROAD	OTHER	CITY CENTER	UNINCORPORATED COMMUNITY
TOWNSHIP ROAD	UNKNOWN	UNDOT OFFICE	MILITARY
UNORGANIZED TERRITORY ROAD		HIGHWAY PATROL DISTRICT OFFICE	VOYAGEURS NATIONAL PARK
OTHER ROADS		STATE TRAVEL INFORMATION CENTER	BOUNDARY WATERS CANOE AREA WILDERNESS
Municipal		REST AREA (Full Service)	STATE PARK
Private		REST AREA (Vault Toilet)	NATIONAL FOREST
National Monument		WAYSIDE (Vault or Pit Toilet)	NATIONAL AND STATE FOREST
National Wildlife Refuge		PARK AND RIDE LOT	STATE FOREST
State Game Preserve		PORT OF ENTRY	NATIONAL TRAIL
		PUBLIC ACCESS POINT	WILDLIFE REFUGUE AREA
		MN STATE COLLEGE AND UNIVERSITY SYSTEM (MNSCU)	WILDLIFE MANAGEMENT AREA
		UNIVERSITY OF MN SYSTEM	HYDROLOGIC FEATURES
		FAIRGROUNDS	RIVER OR STREAM (PERMANENT)
			LAKE, POND OR RESERVOIR
			STREAM (INTERMITTENT)
			DRAINAGE DITCH
			WETLAND
			ISLAND OR LAND
			REGIONAL WATERSHED



Population (U.S. Census 2010): 972



To request information from this document in an alternative format, call 651-366-4718 or 1-800-657-3774 (Greater Minnesota); 711 or 1-800-627-3529 (Minnesota Relay). You may also send an e-mail to ADarequest.dot@state.mn.us. (Please request at least one week in advance.)