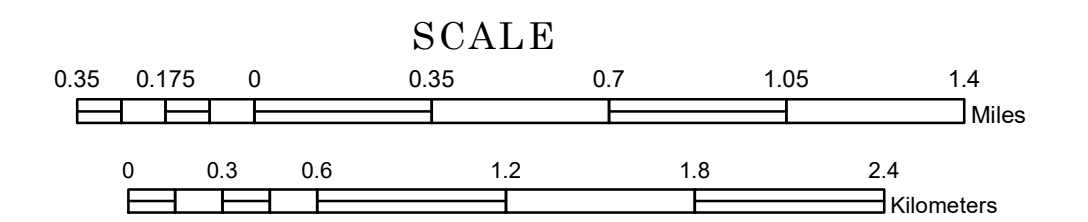


# TOWNSHIP OF EAST VALLEY

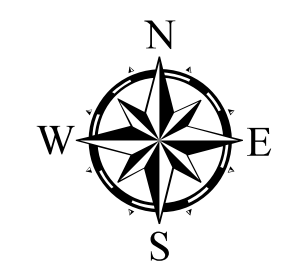
PREPARED BY THE  
MINNESOTA DEPARTMENT OF TRANSPORTATION  
OFFICE OF TRANSPORTATION SYSTEM MANAGEMENT

IN COOPERATION WITH  
U.S. DEPARTMENT OF TRANSPORTATION  
FEDERAL HIGHWAY ADMINISTRATION



1 in = 2,000 ft

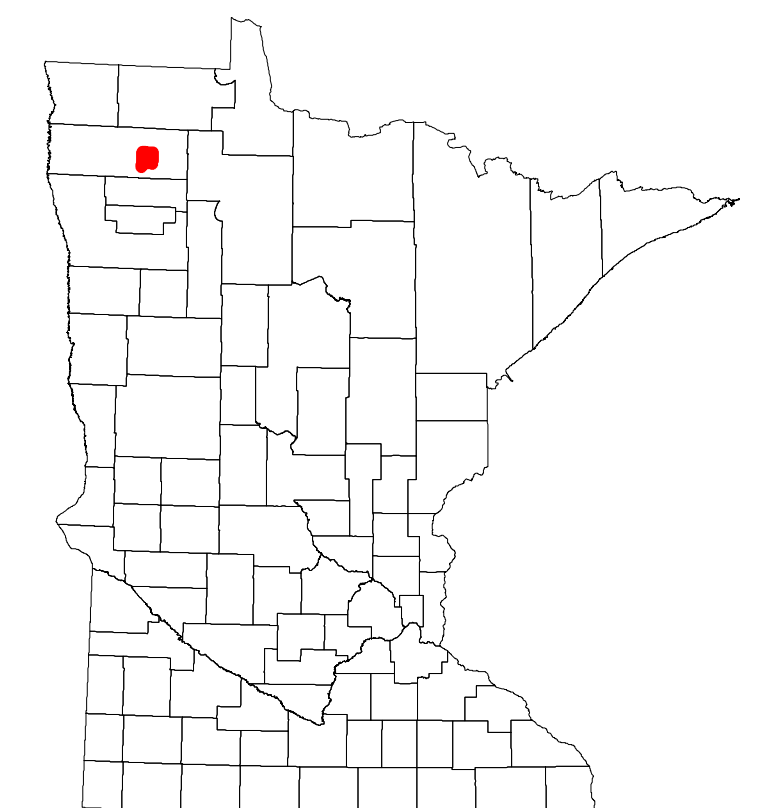
2023



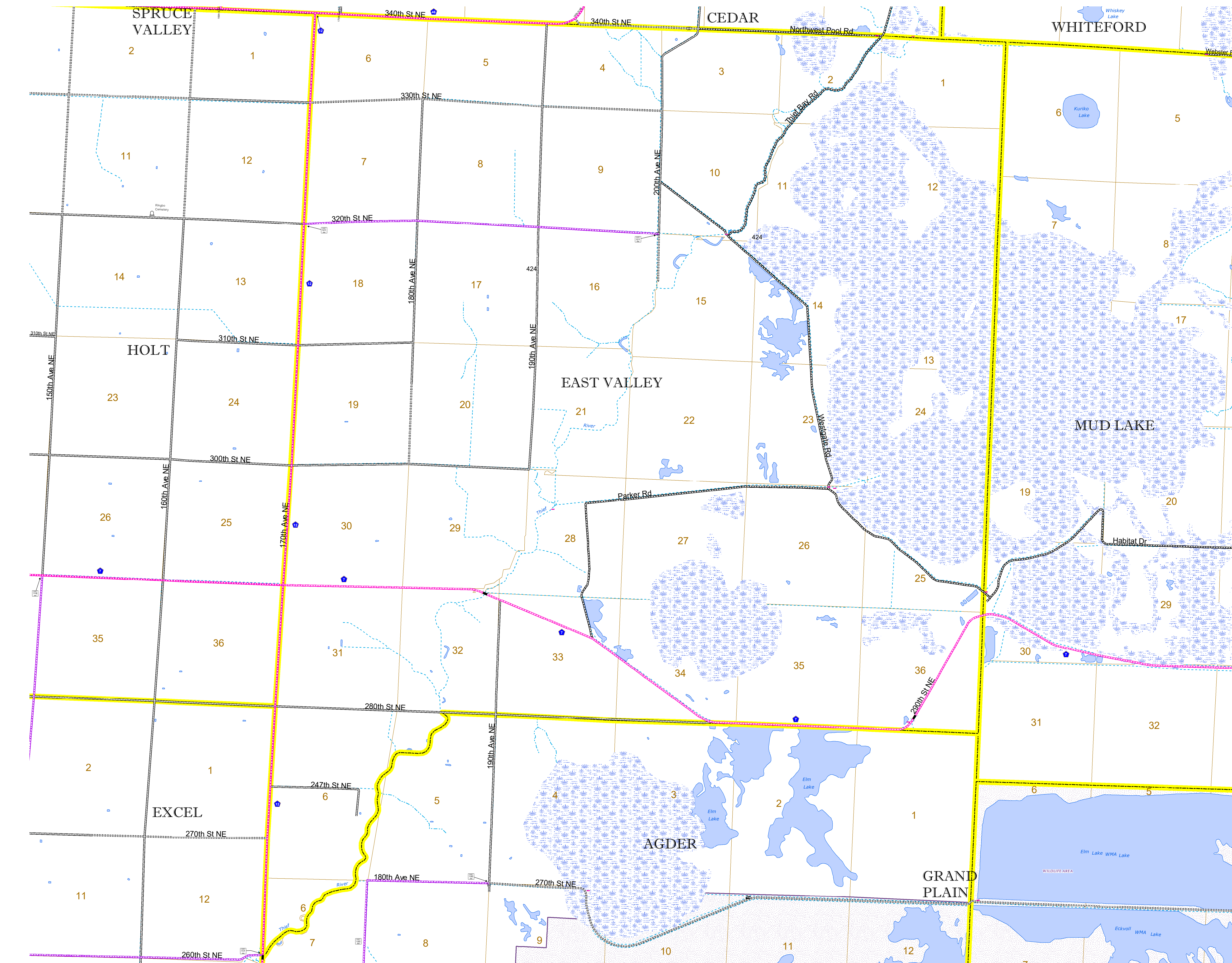
Projection:  
Transverse Mercator  
NAD 1986  
UTM Zone 15

North American Datum  
of 1986

ROAD AND ROADWAY FEATURES		AVIATION FEATURES	
INTERSTATE	CONCRETE	COMMERCIAL AIRPORT	
US HIGHWAY	BITUMINOUS	GENERAL AIRPORT	
MN HIGHWAY	GRAVEL	AIRSTRIP	
COUNTY STATE AID HIGHWAY	DIRT/UNIMPROVED	SEAPLANE	
COUNTY ROAD	OTHER	AIRPORT RUNWAY	
TOWNSHIP ROAD	UNKNOWN		
UNORGANIZED TERRITORY ROAD			
OTHER ROADS			
Municipal	RAMP OR CONNECTOR		
Private	INTERSTATE EXIT		
National Monument	GREAT RIVER ROAD		
National Park			
National Wildlife State Game Preserve			
Military			
RAILROAD AND RAILWAY FEATURES		BOUNDARY FEATURES	
EMPIRE BUILDER STATION (AMTRAK)	TRIBAL LAND	STATE OF MINNESOTA	
NORTHSTAR STATION (COMMUTER)	COUNTY	MUNICIPALITY	
LIGHT RAIL	UNORGANIZED TERRITORY	FEDERAL ADJUSTED URBAN AREA (2014)	
BLUE LINE	FEDERAL ADJUSTED URBAN AREA (2014)	CIVIL TOWNSHIP	
GREEN LINE	CIVIL TOWNSHIP	CONGRESSIONAL TOWNSHIP	
	SECTION	MILITARY	
	VOYAGEURS NATIONAL PARK	BOUNDARY WATERS CANOE AREA WILDERNESS	
	STATE PARK	REGIONAL PARK	
	NATIONAL FOREST	NATIONAL AND STATE FOREST	
	STATE FOREST	NATIONAL TRAIL	
	WILDLIFE REFUGUE AREA	WILDLIFE MANAGEMENT AREA	
	WILDLIFE MANAGEMENT AREA	HYDROLOGIC FEATURES	
	RIVER OR STREAM (PERENNIAL)	LAKE, POND OR RESERVOIR	
	STREAM (INTERMITTENT)	DRAINAGE DITCH	
	WETLAND	ISLAND OR LAND	
	REGIONAL WATERSHED		



Population (U.S. Census 2010): 43



To request information from this document in an alternative format, call 651-366-4718 or 1-800-657-3774 (Greater Minnesota); 711 or 1-800-627-3529 (Minnesota Relay). You may also send an e-mail to ADArequest.dot@state.mn.us. (Please request at least one week in advance.)