

TOWNSHIP OF STANLEY

PREPARED BY THE
MINNESOTA DEPARTMENT OF TRANSPORTATION
OFFICE OF TRANSPORTATION SYSTEM MANAGEMENT

IN COOPERATION WITH
U.S. DEPARTMENT OF TRANSPORTATION
FEDERAL HIGHWAY ADMINISTRATION



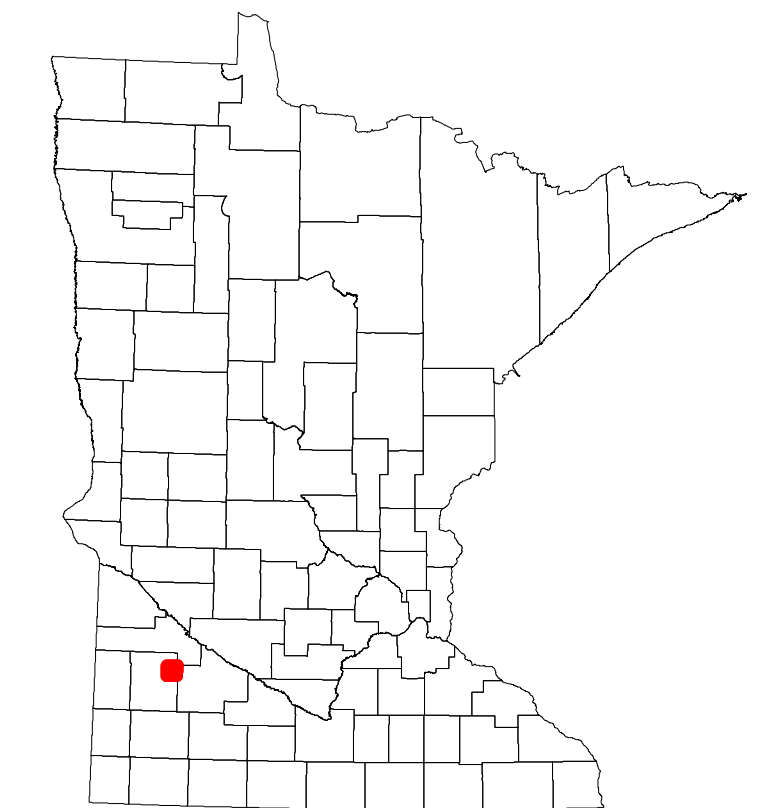
2023

Projection:
Transverse Mercator
NAD 1986
UTM Zone 15

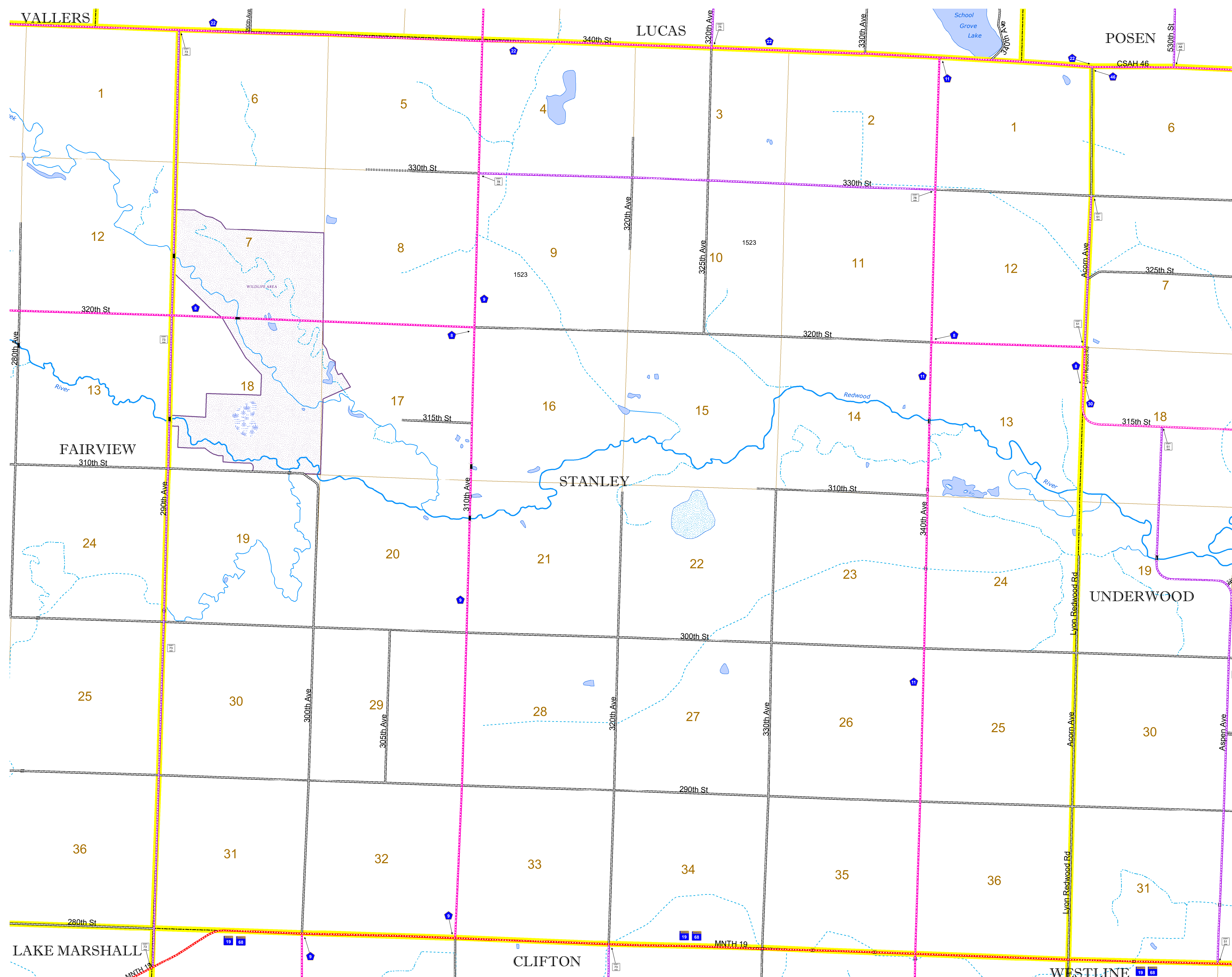


North American Datum
of 1986

ROAD AND ROADWAY FEATURES		AVIATION FEATURES		
INTERSTATE	CONCRETE	COMMERCIAL AIRPORT	GENERAL AIRPORT	
US HIGHWAY	BITUMINOUS	AIRSTRIP	SEAPLANE	
MN HIGHWAY	GRAVEL	AIRPORT RUNWAY		
COUNTY STATE AID HIGHWAY	DIRT/UNIMPROVED			
COUNTY ROAD	OTHER			
TOWNSHIP ROAD	UNKNOWN			
UNORGANIZED TERRITORY ROAD				
OTHER ROADS				
Municipal	RAMP OR CONNECTOR			
Private	INTERSTATE EXIT			
National Monument	GREAT RIVER ROAD			
National Wildlife Refuge				
State Game				
State Park				
Preserve				
RAILROAD AND RAILWAY FEATURES		BOUNDARY FEATURES		
EMPIRE BUILDER STATION (AMTRAK)	TRIBAL LAND	STATE OF MINNESOTA	COUNTY	
NORTHSTAR STATION (COMPUTER)	STATE OF MINNESOTA	MUNICIPALITY	UNORGANIZED TERRITORY	
LIGHT RAIL	FEDERAL ADJUSTED URBAN AREA (2014)	CIVIL TOWNSHIP	CONGRESSIONAL TOWNSHIP	
BLUE LINE	CIVIL TOWNSHIP	SECTION	MILITARY	
GREEN LINE	SECTION	MILITARY	VOYAGEURS NATIONAL PARK	
INFRASTRUCTURE FEATURES		BOUNDARY WATERS CANOE AREA WILDERNESS	STATE PARK	
LONG BRIDGE (200' OR GREATER SPAN)	STATE OF MINNESOTA	REGIONAL PARK	NATIONAL FOREST	
MAJOR BRIDGE (20' TO 200' SPAN)	COUNTY	NATIONAL AND STATE FOREST	STATE FOREST	
MINOR BRIDGE (5' TO 20' SPAN)	MUNICIPALITY	NATIONAL TRAIL	WILDLIFE REFUGUE AREA	
DAM	UNORGANIZED TERRITORY	WILDLIFE MANAGEMENT AREA	HYDROLOGIC FEATURES	
LOCK AND DAM	FEDERAL ADJUSTED URBAN AREA (2014)	RIVER OR STREAM (PERENNIAL)	LAKE, POND OR RESERVOIR	
	CIVIL TOWNSHIP	STREAM (INTERMITTENT)	DRAINAGE DITCH	
	CONGRESSIONAL TOWNSHIP	WETLAND	ISLAND OR LAND	
	SECTION	WETLAND	REGIONAL WATERSHED	
	MILITARY			
	VOYAGEURS NATIONAL PARK			
	BOUNDARY WATERS CANOE AREA WILDERNESS			
	STATE PARK			
	REGIONAL PARK			
	NATIONAL FOREST			
	NATIONAL AND STATE FOREST			
	STATE FOREST			
	WILDLIFE REFUGUE AREA			
	WILDLIFE MANAGEMENT AREA			
	HYDROLOGIC FEATURES			
	RIVER OR STREAM (PERENNIAL)			
	LAKE, POND OR RESERVOIR			
	STREAM (INTERMITTENT)			
	DRAINAGE DITCH			
	WETLAND			
	ISLAND OR LAND			
	REGIONAL WATERSHED			



Population (U.S. Census 2010): 238



To request information from this document in an alternative format, call 651-366-4718 or 1-800-657-3774 (Greater Minnesota); 711 or 1-800-627-3529 (Minnesota Relay). You may also send an e-mail to ADArequest.dot@state.mn.us. (Please request at least one week in advance.)