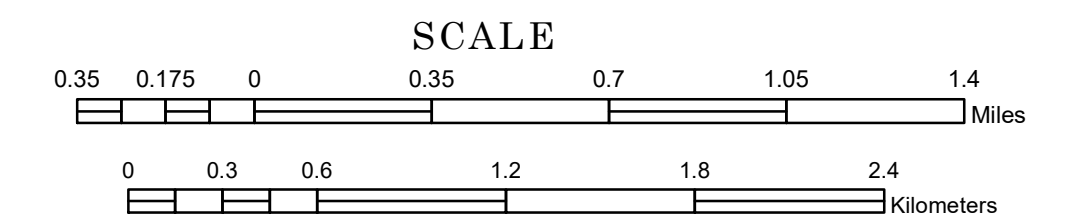


TOWNSHIP OF CAMP RELEASE

PREPARED BY THE
MINNESOTA DEPARTMENT OF TRANSPORTATION
OFFICE OF TRANSPORTATION SYSTEM MANAGEMENT

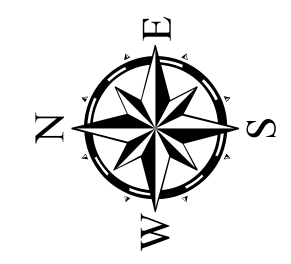
IN COOPERATION WITH
U.S. DEPARTMENT OF TRANSPORTATION
FEDERAL HIGHWAY ADMINISTRATION



1 in = 2,000 ft

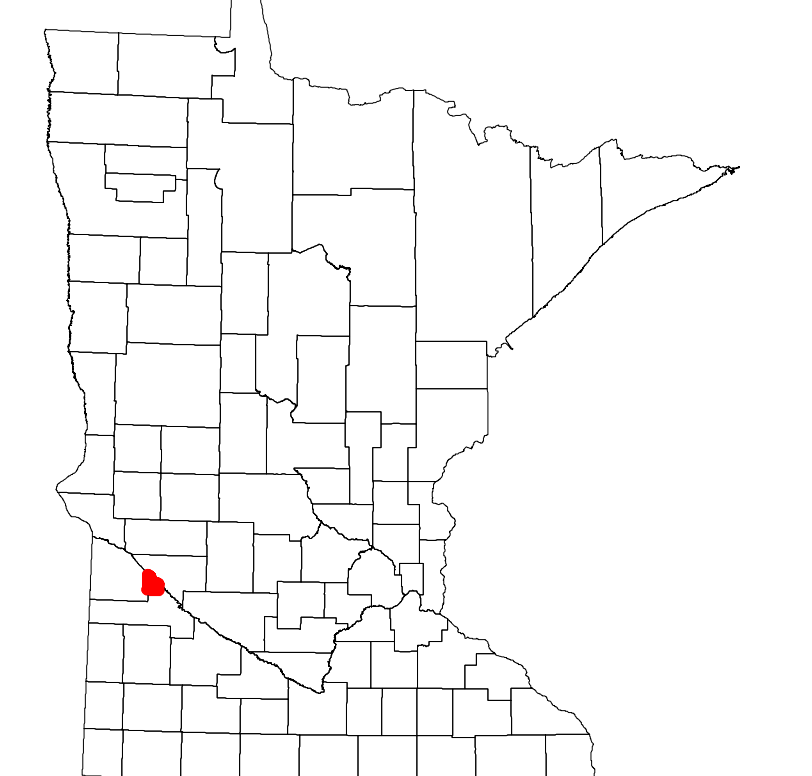
2023

Projection:
Transverse Mercator
NAD 1986
UTM Zone 15

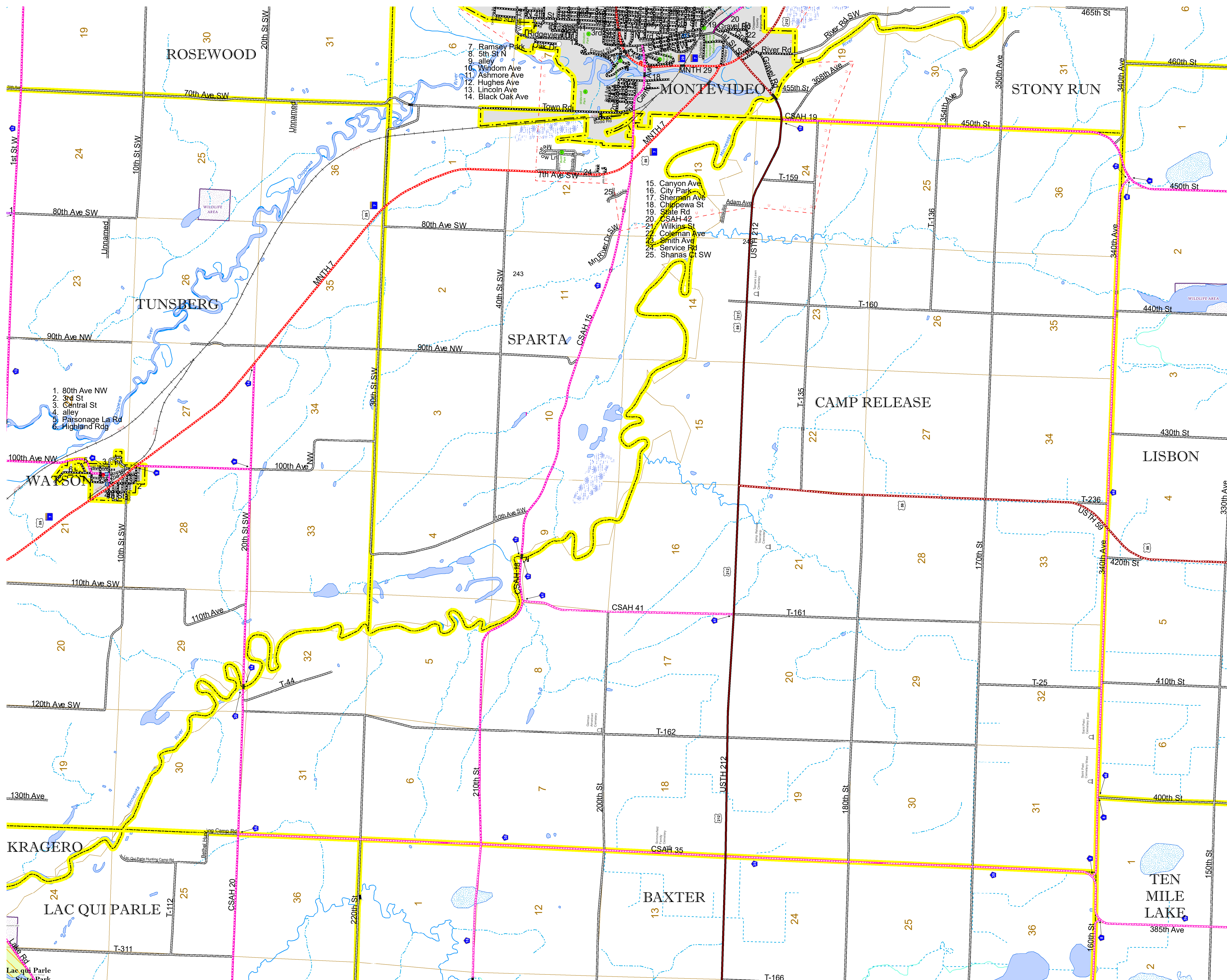


North American Datum
of 1986

ROAD AND ROADWAY FEATURES		AVIATION FEATURES	
INTERSTATE		CONCRETE	
US HIGHWAY		BITUMINOUS	
MN HIGHWAY		GRAVEL	
COUNTY STATE AID HIGHWAY		DIRT/UNIMPROVED	
COUNTY ROAD		OTHER	
TOWNSHIP ROAD		UNKNOWN	
UNORGANIZED TERRITORY ROAD		RAMP OR CONNECTOR	
OTHER ROADS		INTERSTATE EXIT	
Municipal		GREAT RIVER ROAD	
Private		COMMERCIAL AIRPORT	
National Monument		GENERAL AIRPORT	
State Forest		AIRSTRIP	
Nature Service		SEAPLANE	
Military		AIRPORT RUNWAY	
National Park		TRIAL LAND	
National Wildlife Refuge		STATE OF MINNESOTA	
State Park		COUNTY	
Preserve		MUNICIPALITY	
RAILROAD AND RAILWAY FEATURES		UNORGANIZED TERRITORY	
EMPIRE BUILDER STATION (AMTRAK)		FEDERAL ADJUSTED URBAN AREA (2014)	
NORTHSTAR STATION (COMPUTER)		CIVIL TOWNSHIP	
LIGHT RAIL		CONGRESSIONAL TOWNSHIP	
BLUE LINE		SECTION	
GREEN LINE		MILITARY	
INFRASTRUCTURE FEATURES		VOYAGEURS NATIONAL PARK	
LONG BRIDGE (200' OR GREATER SPAN)		BOUNDARY WATERS CANOE AREA WILDERNESS	
MAJOR BRIDGE (20' TO 200' SPAN)		STATE PARK	
MINOR BRIDGE (5' TO 20' SPAN)		REGIONAL PARK	
DAM		NATIONAL FOREST	
LOCK AND DAM		NATIONAL AND STATE FOREST	
CITY CENTERS		STATE FOREST	
STATE CAPITAL		WILDLIFE REFUGE AREA	
COUNTY SEAT		WILDLIFE MANAGEMENT AREA	
CITY CENTER		HYDROLOGIC FEATURES	
UNINCORPORATED COMMUNITY		RIVER OR STREAM (PERENNIAL)	
PUBLIC SERVICE FEATURES		LAKE, POND OR RESERVOIR	
MNDOT OFFICE		STREAM (INTERMITTENT)	
MNDOT TRUCK STATION		DRAINAGE DITCH	
HIGHWAY PATROL DISTRICT OFFICE		WETLAND	
STATE TRAVEL INFORMATION CENTER		ISLAND OR LAND	
REST AREA (FULL SERVICE)		REGIONAL WATERSHED	
REST AREA (VAULT TOILET)			
WAYSIDE (VAULT OR PIT TOILET)			
PARK AND RIDE LOT			
PORT OF ENTRY			
PUBLIC ACCESS POINT			
MN STATE COLLEGE AND UNIVERSITY SYSTEM (MNSCU)			
UNIVERSITY OF MN SYSTEM			
FAIRGROUNDS			
CULTURAL FEATURES			
STATE HISTORICAL MARKER			
HISTORIC DISTRICT			
HISTORIC SITE			
MONUMENT			



Population (U.S. Census 2010): 315



To request information from this document in an alternative format, call 651-366-4718 or 1-800-657-3774 (Greater Minnesota); 711 or 1-800-627-3529 (Minnesota Relay). You may also send an e-mail to ADarequest.dot@state.mn.us. (Please request at least one week in advance.)