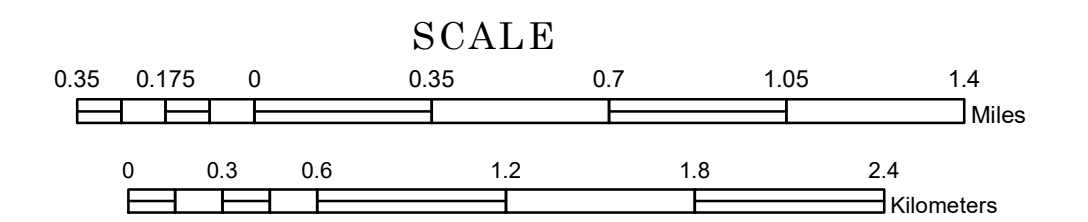


# TOWNSHIP OF RICHARDVILLE

PREPARED BY THE  
MINNESOTA DEPARTMENT OF TRANSPORTATION  
OFFICE OF TRANSPORTATION SYSTEM MANAGEMENT

IN COOPERATION WITH  
U.S. DEPARTMENT OF TRANSPORTATION  
FEDERAL HIGHWAY ADMINISTRATION

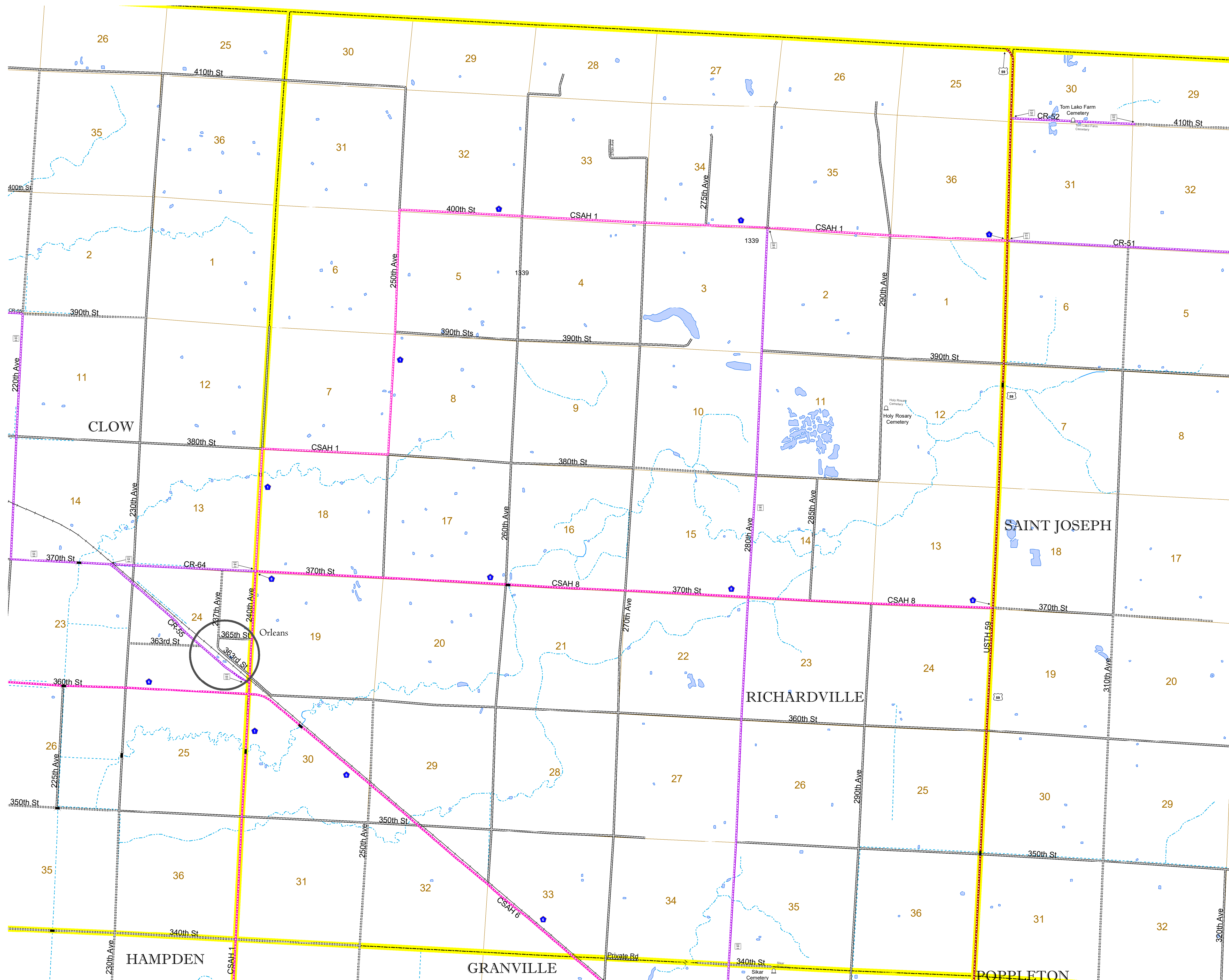


2024

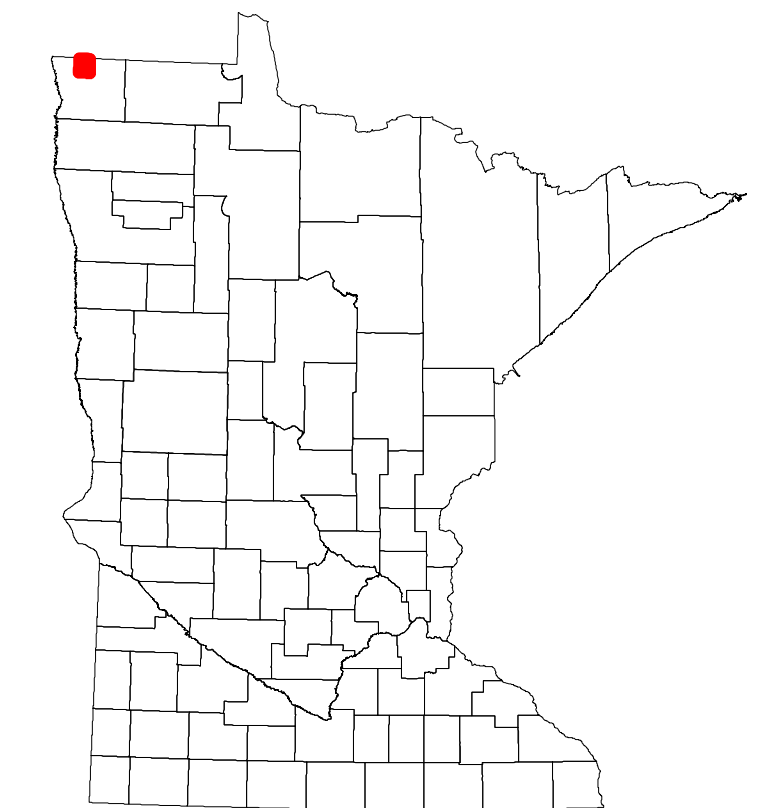
Projection:  
Transverse Mercator  
NAD 1986  
UTM Zone 15



North American Datum  
of 1986



ROAD AND ROADWAY FEATURES		BOUNDARY FEATURES	
INTERSTATE		CONCRETE	
US HIGHWAY		BITUMINOUS	
MN HIGHWAY		GRAVEL	
COUNTY STATE AID HIGHWAY		DIRT/UNIMPROVED	
COUNTY ROAD		OTHER	
TOWNSHIP ROAD		UNKNOWN	
UNORGANIZED TERRITORY ROAD			
OTHER ROADS		RAMP OR CONNECTOR	
Municipal		INTERSTATE EXIT	
Private		AVIATION FEATURES	
National Monument		COMMERCIAL AIRPORT	
State Forest		GENERAL AIRPORT	
National Wildlife Refuge		AIRSTRIP	
State Park		SEAPLANE	
National Forest		AIRPORT RUNWAY	
State Park Preserve			
RAILROAD AND RAILWAY FEATURES		BOUNDARY FEATURES	
EMPIRE BUILDER STATION (AMTRAK)		TRIBAL LAND	
NORTHSTAR STATION (COMPUTER)		STATE OF MINNESOTA	
LIGHT RAIL		COUNTY	
BLUE LINE		MUNICIPALITY	
GREEN LINE		UNORGANIZED TERRITORY	
		FEDERAL ADJUSTED URBAN AREA (2014)	
		CIVIL TOWNSHIP	
		CONGRESSIONAL TOWNSHIP	
		SECTION	
		MILITARY	
		VOYAGEURS NATIONAL PARK	
		BOUNDARY WATERS CANOE AREA WILDERNESS	
		STATE PARK	
		REGIONAL PARK	
		NATIONAL FOREST	
		NATIONAL AND STATE FOREST	
		STATE FOREST	
		NATIONAL TRAIL	
		WILDLIFE REFUGUE AREA	
		WILDLIFE MANAGEMENT AREA	
		HYDROLOGIC FEATURES	
		RIVER OR STREAM (PERMANENT)	
		LAKE, POND OR RESERVOIR	
		STREAM (INTERMITTENT)	
		DRAINAGE DITCH	
		WETLAND	
		ISLAND OR LAND	
		REGIONAL WATERSHED	
CITY CENTERS			
STATE CAPITAL			
COUNTY SEAT			
CITY CENTER			
UNINCORPORATED COMMUNITY			
PUBLIC SERVICE FEATURES			
MNDOT OFFICE			
MNDOT TRUCK STATION			
HIGHWAY PATROL DISTRICT OFFICE			
STATE TRAVEL INFORMATION CENTER			
REST AREA (Full Service)			
REST AREA (Vault Toilet)			
WAYSIDE (Vault or Pit Toilet)			
PARK AND RIDE LOT			
PORT OF ENTRY			
PUBLIC ACCESS POINT			
MN STATE COLLEGE AND UNIVERSITY SYSTEM (MNSCU)			
UNIVERSITY OF MN SYSTEM			
FAIRGROUNDS			
CULTURAL FEATURES			
STATE HISTORICAL MARKER			
HISTORIC DISTRICT			
HISTORIC SITE			
MONUMENT			



Population (U.S. Census 2010): 102

To request information from this document in an alternative format, call 651-366-4718 or 1-800-657-3774 (Greater Minnesota); 711 or 1-800-627-3529 (Minnesota Relay). You may also send an e-mail to ADarequest.dot@state.mn.us. (Please request at least one week in advance.)