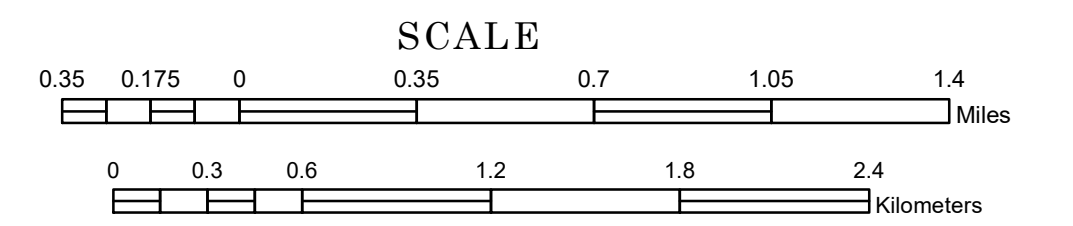


# TOWNSHIP OF CARIBOU

PREPARED BY THE  
MINNESOTA DEPARTMENT OF TRANSPORTATION  
OFFICE OF TRANSPORTATION SYSTEM MANAGEMENT

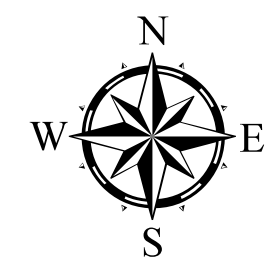
IN COOPERATION WITH  
U.S. DEPARTMENT OF TRANSPORTATION  
FEDERAL HIGHWAY ADMINISTRATION



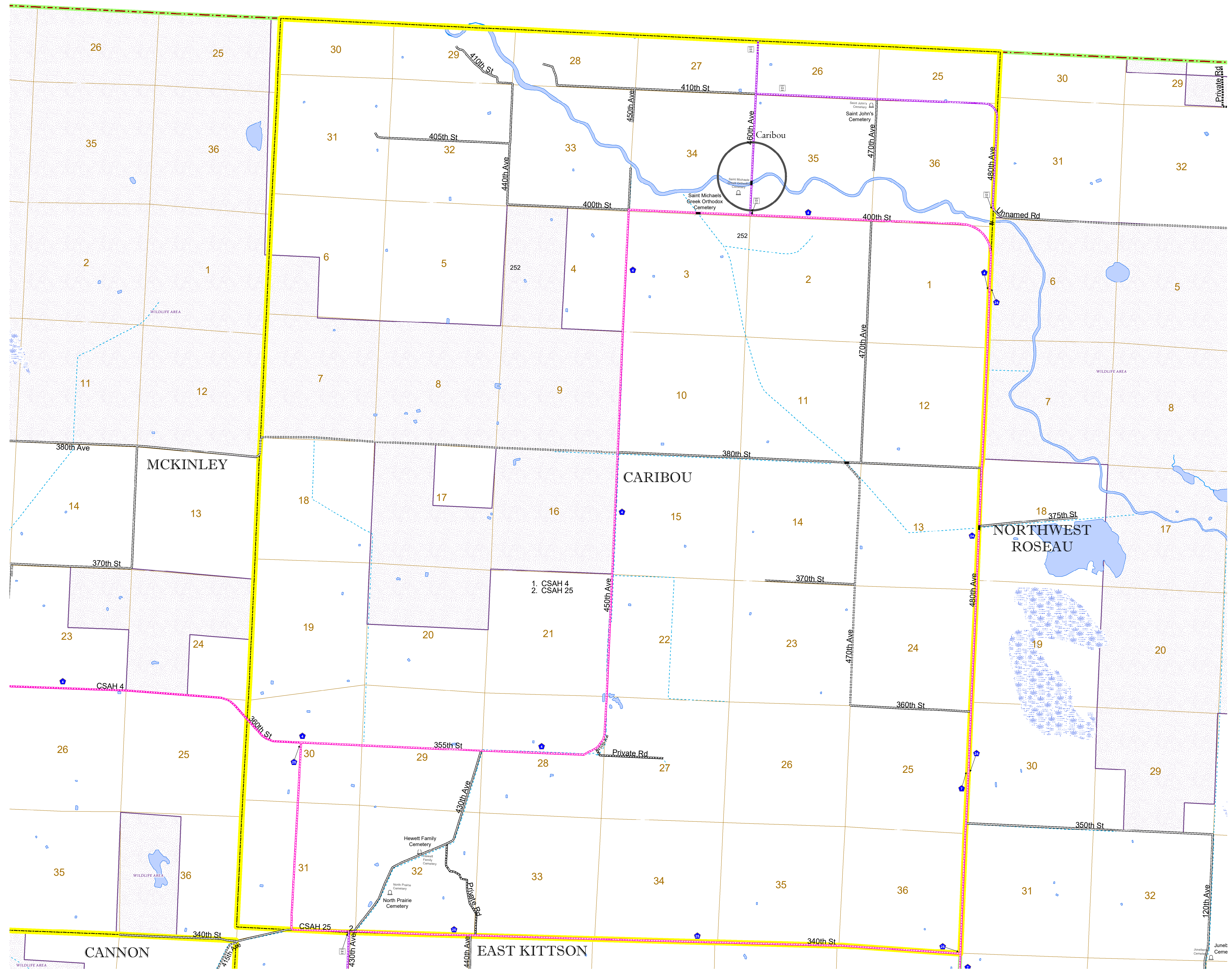
1 in = 2,000 ft

2024

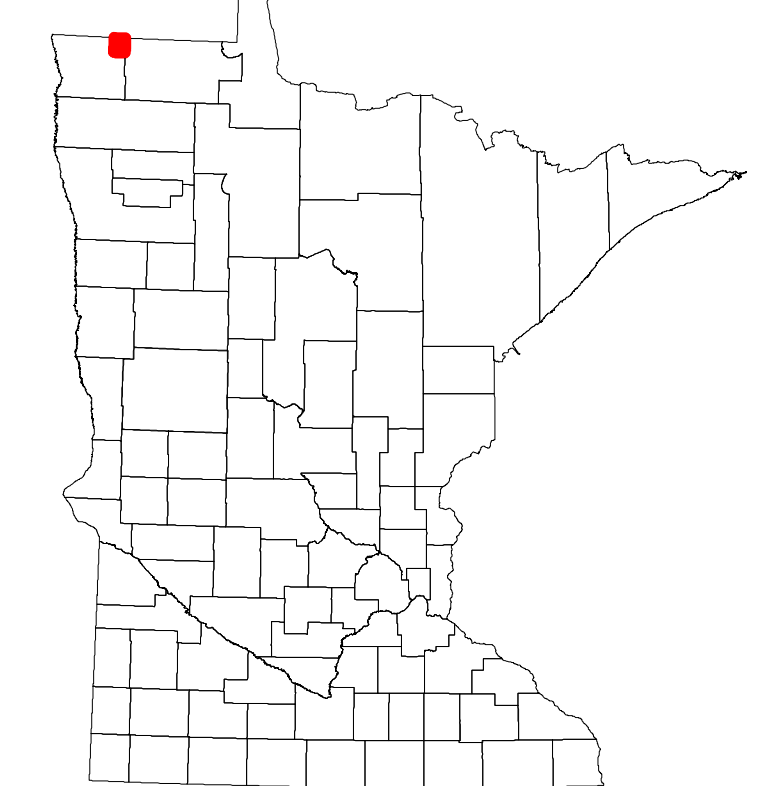
Projection:  
Transverse Mercator  
NAD 1986  
UTM Zone 15



North American Datum  
of 1986



ROAD AND ROADWAY FEATURES		AVIATION FEATURES	
INTERSTATE	CONCRETE	COMMERCIAL AIRPORT	GENERAL AIRPORT
US HIGHWAY	BITUMINOUS	AIRSTRIP	SEAPLANE
MN HIGHWAY	GRAVEL	AIRPORT RUNWAY	BOUNDARY FEATURES
COUNTY STATE AID HIGHWAY	DIRT/UNIMPROVED	TRIAL LAND	STATE OF MINNESOTA
COUNTY ROAD	OTHER	COUNTY	MUNICIPALITY
TOWNSHIP ROAD	UNKNOWN	UNORGANIZED TERRITORY	FEDERAL ADJUSTED URBAN AREA (2014)
UNORGANIZED TERRITORY ROAD		CIVIL TOWNSHIP	CONGRESSIONAL TOWNSHIP
OTHER ROADS		SECTION	MILITARY
Municipal		VOYAGEURS NATIONAL PARK	BOUNDARY WATERS CANOE AREA WILDERNESS
Private		STATE PARK	REGIONAL PARK
National Monument		NATIONAL FOREST	NATIONAL AND STATE FOREST
National Park		STATE FOREST	NATIONAL TRAIL
National Wildlife		WILDLIFE REFUGUE AREA	WILDLIFE MANAGEMENT AREA
State Park		HYDROLOGIC FEATURES	RIVER OR STREAM (PERENNIAL)
Preserve		LAKE, POND OR RESERVOIR	STREAM (INTERMITTENT)
		DRAINAGE DITCH	WETLAND
		ISLAND OR LAND	REGIONAL WATERSHED



Population (U.S. Census 2010): 48

To request information from this document in an alternative format, call 651-366-4718 or 1-800-657-3774 (Greater Minnesota); 711 or 1-800-627-3529 (Minnesota Relay). You may also send an e-mail to ADRequest.dot@state.mn.us. (Please request at least one week in advance.)