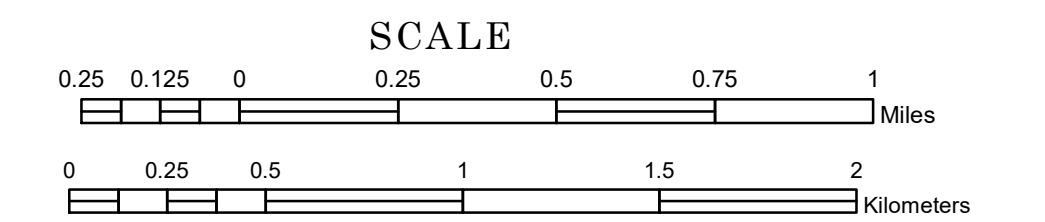


TOWNSHIP OF HANGAARD

PREPARED BY THE
MINNESOTA DEPARTMENT OF TRANSPORTATION
OFFICE OF TRANSPORTATION SYSTEM MANAGEMENT

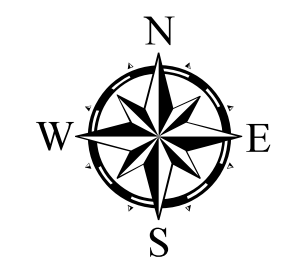
IN COOPERATION WITH
U.S. DEPARTMENT OF TRANSPORTATION
FEDERAL HIGHWAY ADMINISTRATION



1 in = 1,600 ft

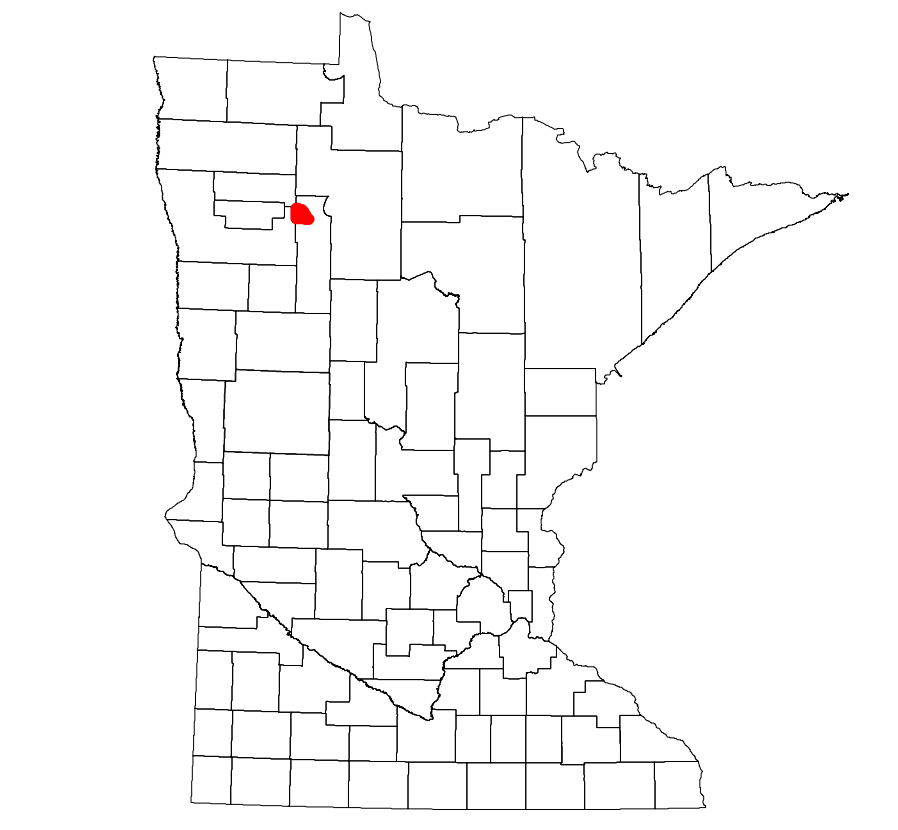
2024

Projection:
Transverse Mercator
NAD 1986
UTM Zone 15

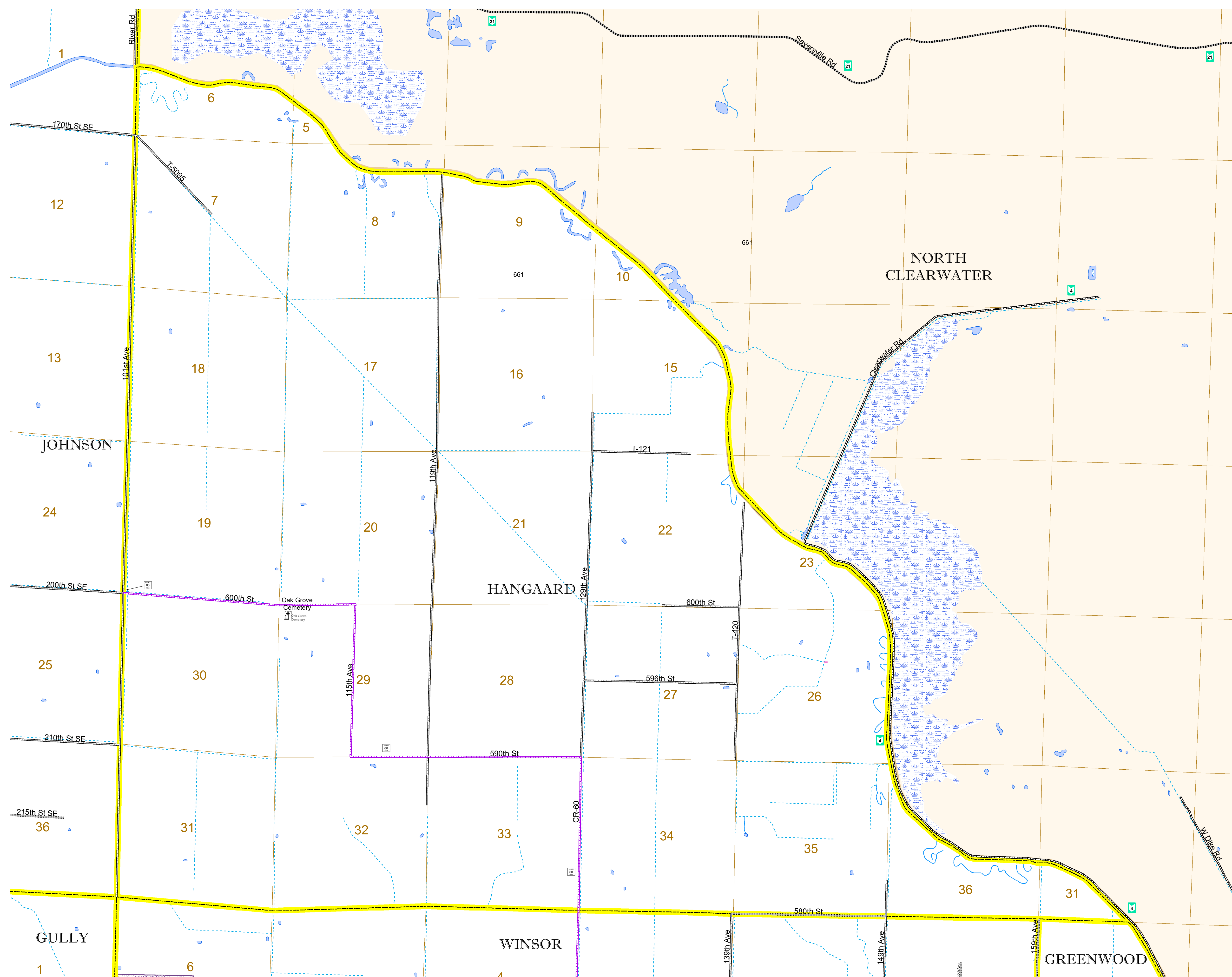


North American Datum
of 1986

<ul style="list-style-type: none"> INTERSTATE US HIGHWAY MN HIGHWAY COUNTY STATE AID HIGHWAY COUNTY ROAD TOWNSHIP ROAD UNORGANIZED TERRITORY ROAD OTHER ROADS RAILROAD AND RAILWAY FEATURES LONG BRIDGE (300' OR GREATER SPAN) MAJOR BRIDGE (20' TO 300' SPAN) MINOR BRIDGE (5' TO 20' SPAN) DAM LOCK AND DAM STATE CAPITAL COUNTY SEAT CITY CENTER UNINCORPORATED COMMUNITY MNDOT OFFICE MNDOT TRUCK STATION HIGHWAY PATROL DISTRICT OFFICE STATE TRAVEL INFORMATION CENTER REST AREA (FULL SERVICE) REST AREA (VAULT TOILET) WAYSIDE (VAULT OR PIT TOILET) PARK AND RIDE LOT PORT OF ENTRY PUBLIC ACCESS POINT MN STATE COLLEGE AND UNIVERSITY SYSTEM (MNSCU) UNIVERSITY OF MN SYSTEM FAIRGROUNDS STATE HISTORICAL MARKER HISTORIC DISTRICT HISTORIC SITE MONUMENT 	<ul style="list-style-type: none"> CONCRETE BITUMINOUS GRAVEL DIRT/UNIMPROVED OTHER UNKNOWN RAMP OR CONNECTOR INTERSTATE EXIT GREAT RIVER ROAD COMMERCIAL AIRPORT GENERAL AIRPORT AIRSTRIP SEAPLANE AIRPORT RUNWAY TRIBAL LAND STATE OF MINNESOTA COUNTY MUNICIPALITY UNORGANIZED TERRITORY FEDERAL ADJUSTED URBAN AREA (2014) CIVIL TOWNSHIP CONGRESSIONAL TOWNSHIP SECTION MILITARY VOYAGEURS NATIONAL PARK BOUNDARY WATERS GANOE AREA WILDERNESS STATE PARK REGIONAL PARK NATIONAL FOREST NATIONAL AND STATE FOREST STATE FOREST NATIONAL TRAIL WILDLIFE REFUGE AREA WILDLIFE MANAGEMENT AREA HYDROLOGIC FEATURES RIVER OR STREAM (PERENNIAL) LAKE, POND OR RESERVOIR STREAM (INTERMITTENT) DRAINAGE DITCH WETLAND ISLAND OR LAND REGIONAL WATERSHED
---	---



Population (U.S. Census 2010): 5



To request information from this document in an alternative format, call 651-366-4718 or 1-800-657-3774 (Greater Minnesota); 711 or 1-800-627-3529 (Minnesota Relay). You may also send an e-mail to ADRequest.dot@state.mn.us. (Please request at least one week in advance.)