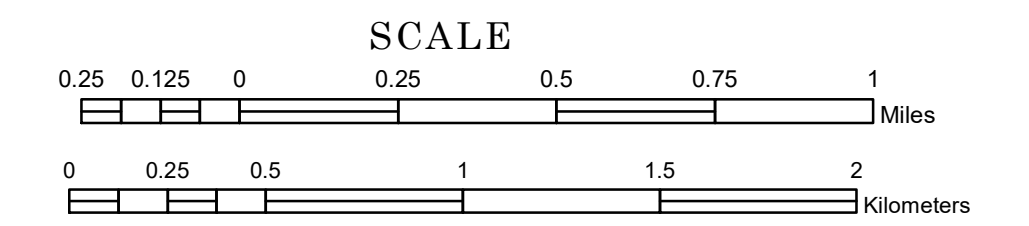


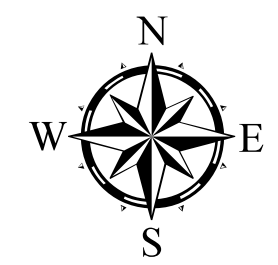
TOWNSHIP OF EDDY

PREPARED BY THE
MINNESOTA DEPARTMENT OF TRANSPORTATION
OFFICE OF TRANSPORTATION SYSTEM MANAGEMENT

IN COOPERATION WITH
U.S. DEPARTMENT OF TRANSPORTATION
FEDERAL HIGHWAY ADMINISTRATION

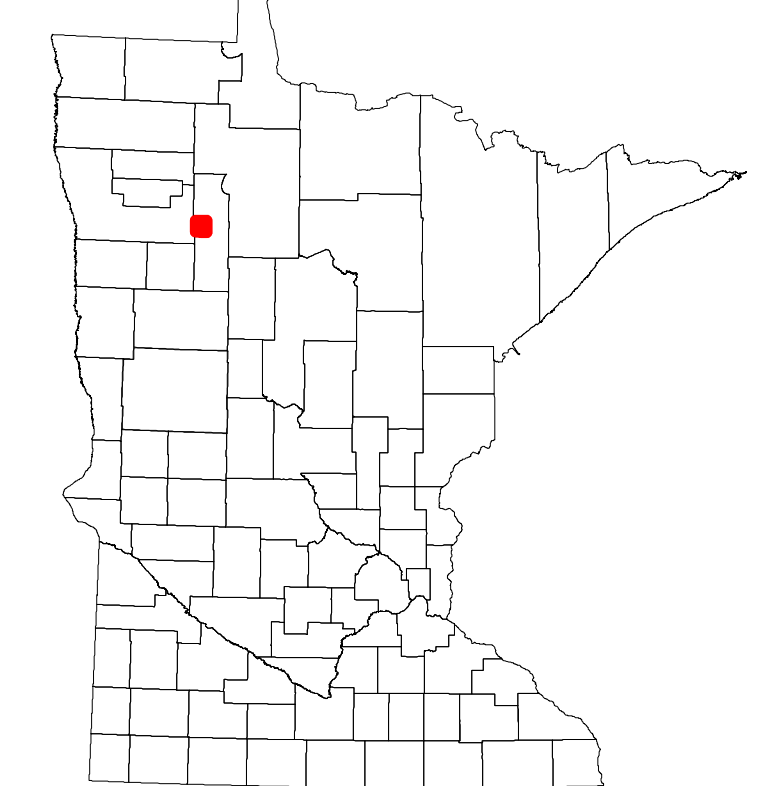


1 in = 1,600 ft
2024

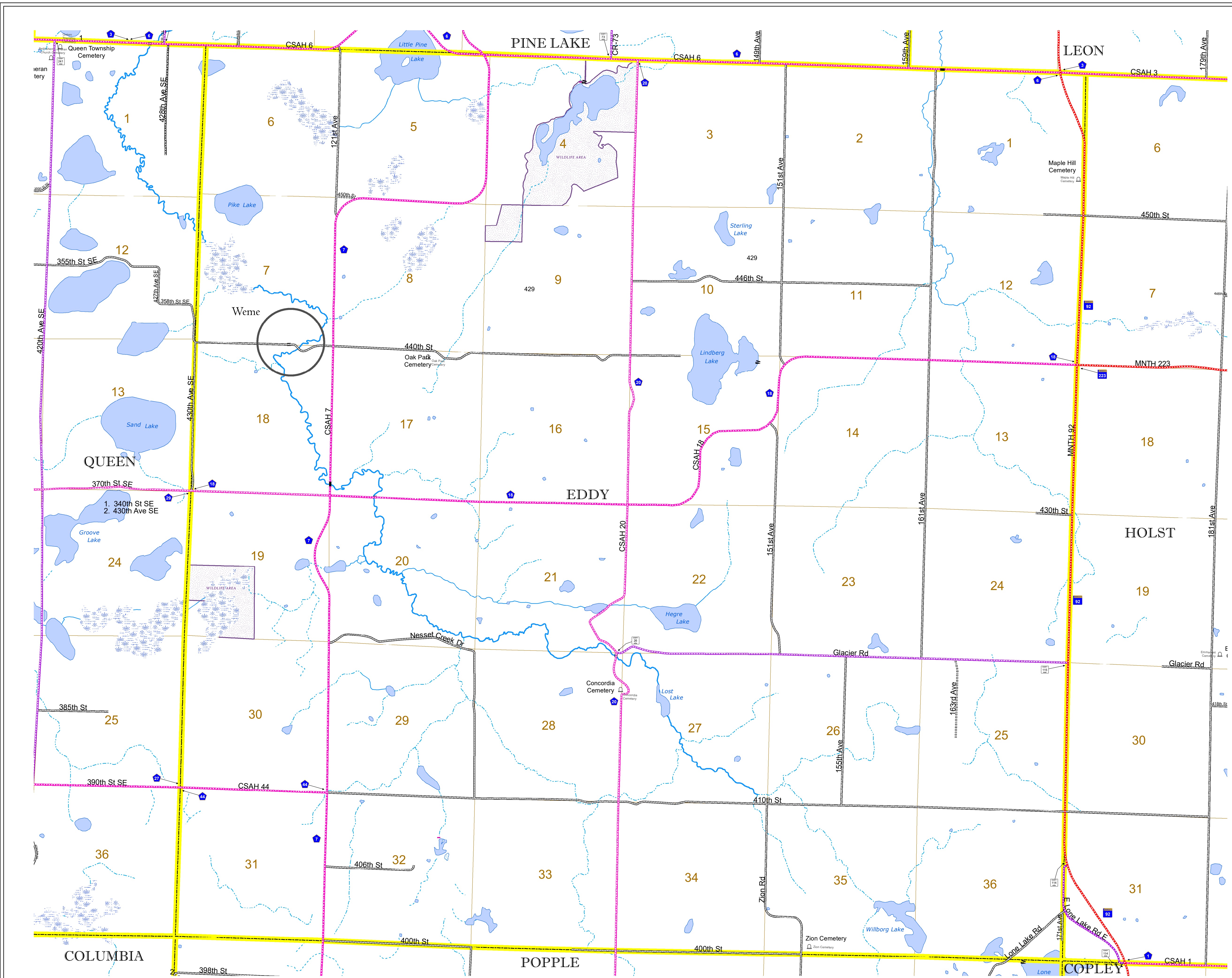


Projection:
Transverse Mercator
NAD 1986
UTM Zone 15

ROAD AND ROADWAY FEATURES		AVIATION FEATURES	
INTERSTATE	CONCRETE	COMMERCIAL AIRPORT	GENERAL AIRPORT
US HIGHWAY	BITUMINOUS	AIRSTRIP	SEAPLANE
MN HIGHWAY	GRAVEL	AIRPORT RUNWAY	
COUNTY STATE AID HIGHWAY	DIRT/UNIMPROVED		
COUNTY ROAD	OTHER		
TOWNSHIP ROAD	UNKNOWN		
UNORGANIZED TERRITORY ROAD			
OTHER ROADS			
Municipal Private National Monument State Forest			
Nature Service National Park National Wildlife State Game			
Museum National Forest State Park Preserve			
RAILROAD AND RAILWAY FEATURES		BOUNDARY FEATURES	
EMPIRE BUILDER STATION (AMTRAK)	TRIBAL LAND	FEDERAL ADJUSTED URBAN AREA (2014)	CIVIL TOWNSHIP
NORTHSTAR STATION (COMPUTER)	STATE OF MINNESOTA	COUNTY	MUNICIPALITY
UNINCORPORATED COMMUNITY			
CONGRESSIONAL TOWNSHIP			
SECTION			
MILITARY			
VOYAGEURS NATIONAL PARK			
BOUNDARY WATERS GANOE AREA WILDERNESS			
STATE PARK			
REGIONAL PARK			
NATIONAL FOREST			
NATIONAL AND STATE FOREST			
STATE FOREST			
NATIONAL TRAIL			
WILDLIFE REFUGUE AREA			
WILDLIFE MANAGEMENT AREA			
HYDROLOGIC FEATURES			
RIVER OR STREAM (PERMANENT)			
LAKE, POND OR RESERVOIR			
STREAM (INTERMITTENT)			
DRAINAGE DITCH			
WETLAND			
ISLAND OR LAND			
REGIONAL WATERSHED			



Population (U.S. Census 2010): 339



To request information from this document in an alternative format, call 651-366-4718 or 1-800-657-3774 (Greater Minnesota); 711 or 1-800-627-3529 (Minnesota Relay). You may also send an e-mail to ADRequest.dot@state.mn.us. (Please request at least one week in advance.)