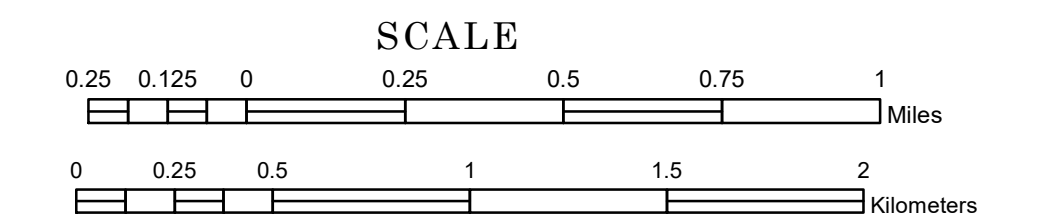


TOWNSHIP OF BEAR CREEK

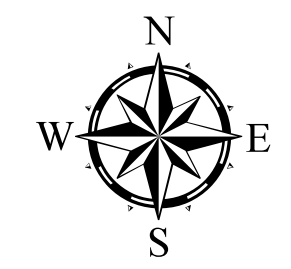
PREPARED BY THE
MINNESOTA DEPARTMENT OF TRANSPORTATION
OFFICE OF TRANSPORTATION SYSTEM MANAGEMENT

IN COOPERATION WITH
U.S. DEPARTMENT OF TRANSPORTATION
FEDERAL HIGHWAY ADMINISTRATION



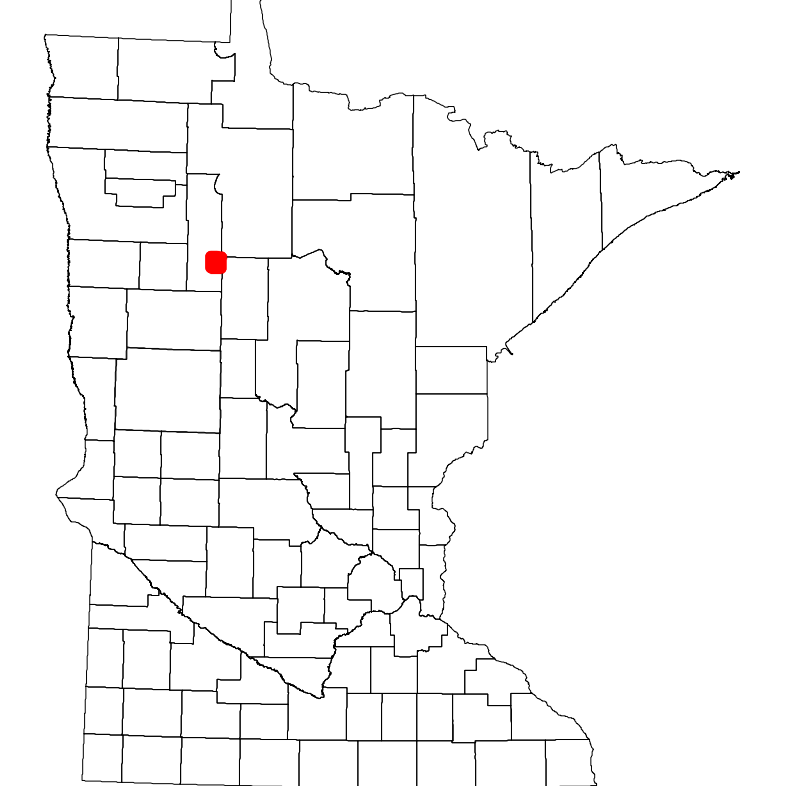
1 in = 1,600 ft
2024

Projection:
Transverse Mercator
NAD 1986
UTM Zone 15

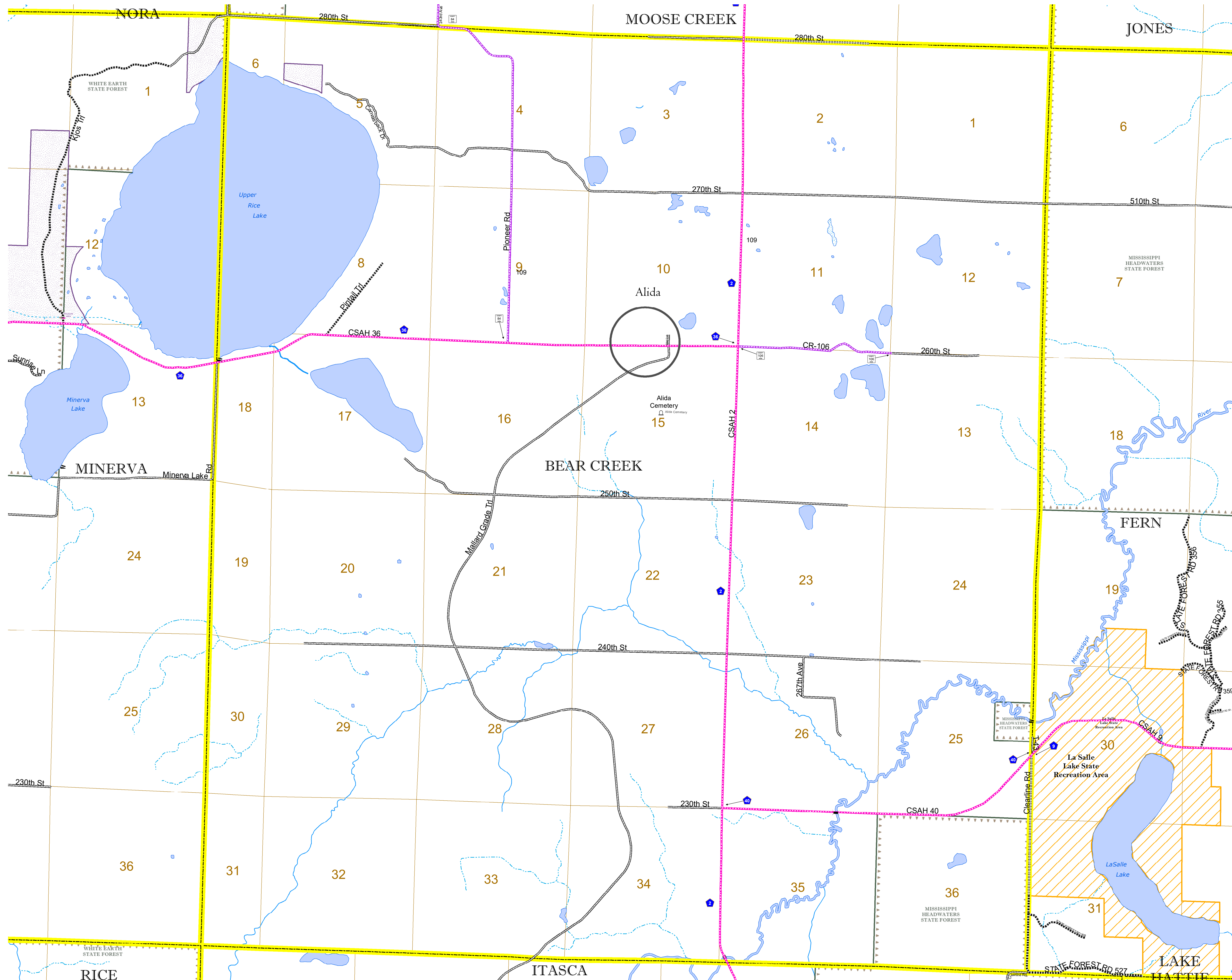


North American Datum
of 1986

| ROAD AND ROADWAY FEATURES | | AVIATION FEATURES | |
|--|-------------------|------------------------------------|---------------------------------------|
| INTERSTATE | CONCRETE | COMMERCIAL AIRPORT | GENERAL AIRPORT |
| US HIGHWAY | BITUMINOUS | AIRSTRIP | SEAPLANE |
| MN HIGHWAY | GRAVEL | AIRPORT RUNWAY | |
| COUNTY STATE AID HIGHWAY | DIRT/UNIMPROVED | | |
| COUNTY ROAD | OTHER | | |
| TOWNSHIP ROAD | UNKNOWN | | |
| UNORGANIZED TERRITORY ROAD | | | |
| OTHER ROADS | | | |
| Municipal | RAMP OR CONNECTOR | | |
| Private | INTERSTATE EXIT | | |
| National Monument | GREAT RIVER ROAD | | |
| National Park | | | |
| National Wildlife | | | |
| State Game | | | |
| State Park | | | |
| Present | | | |
| | | | |
| RAILROAD AND RAILWAY FEATURES | | BOUNDARY FEATURES | |
| EMPIRE BUILDER STATION (AMTRAK) | TRIBAL LAND | STATE OF MINNESOTA | COUNTY |
| NORTHSTAR STATION (COMUTER) | | MUNICIPALITY | UNORGANIZED TERRITORY |
| LIGHT RAIL | | FEDERAL ADJUSTED URBAN AREA (2014) | CIVIL TOWNSHIP |
| BLUE LINE | | CONGRESSIONAL TOWNSHIP | SECTION |
| GREEN LINE | | MILITARY | VOYAGEURS NATIONAL PARK |
| | | | BOUNDARY WATERS CANOE AREA WILDERNESS |
| | | | STATE PARK |
| | | | REGIONAL PARK |
| | | | NATIONAL FOREST |
| | | | NATIONAL AND STATE FOREST |
| | | | STATE FOREST |
| | | | NATIONAL TRAIL |
| | | | WILDLIFE REFUGUE AREA |
| | | | WILDLIFE MANAGEMENT AREA |
| | | | HYDROLOGIC FEATURES |
| | | | RIVER OR STREAM (PERMANENT) |
| | | | LAKE, POND OR RESERVOIR |
| | | | STREAM (INTERMITTENT) |
| | | | DRAINAGE DITCH |
| | | | WETLAND |
| | | | ISLAND OR LAND |
| | | | REGIONAL WATERSHED |
| CITY CENTERS | | | |
| STATE CAPITAL | | | |
| COUNTY SEAT | | | |
| CITY CENTER | | | |
| UNINCORPORATED COMMUNITY | | | |
| PUBLIC SERVICE FEATURES | | | |
| MNDOT OFFICE | | | |
| MNDOT TRUCK STATION | | | |
| HIGHWAY PATROL DISTRICT OFFICE | | | |
| STATE TRAVEL INFORMATION CENTER | | | |
| REST AREA (Full Service) | | | |
| REST AREA (Vault Toilet) | | | |
| WAYSIDE (Vault or Pit Toilet) | | | |
| PARK AND RIDE LOT | | | |
| PORT OF ENTRY | | | |
| PUBLIC ACCESS POINT | | | |
| MN STATE COLLEGE AND UNIVERSITY SYSTEM (MNSCU) | | | |
| UNIVERSITY OF MN SYSTEM | | | |
| FARKSOUNDS | | | |
| CULTURAL FEATURES | | | |
| STATE HISTORICAL MARKER | | | |
| HISTORIC DISTRICT | | | |
| HISTORIC SITE | | | |
| MONUMENT | | | |



Population (U.S. Census 2010): 111



To request information from this document in an alternative format, call 651-366-4718 or 1-800-657-3774 (Greater Minnesota); 711 or 1-800-627-3529 (Minnesota Relay). You may also send an e-mail to ADArequest.dot@state.mn.us. (Please request at least one week in advance.)