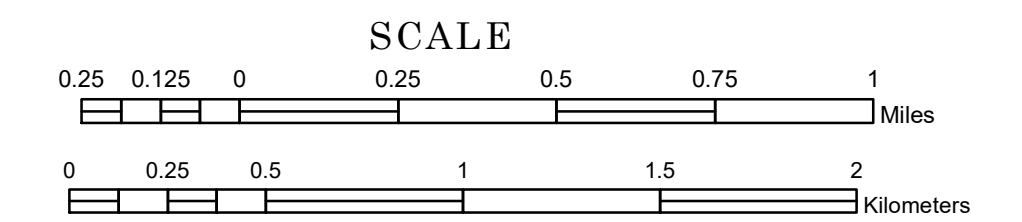


TOWNSHIP OF BUTTERNUT VALLEY

PREPARED BY THE
MINNESOTA DEPARTMENT OF TRANSPORTATION
OFFICE OF TRANSPORTATION SYSTEM MANAGEMENT

IN COOPERATION WITH
U.S. DEPARTMENT OF TRANSPORTATION
FEDERAL HIGHWAY ADMINISTRATION



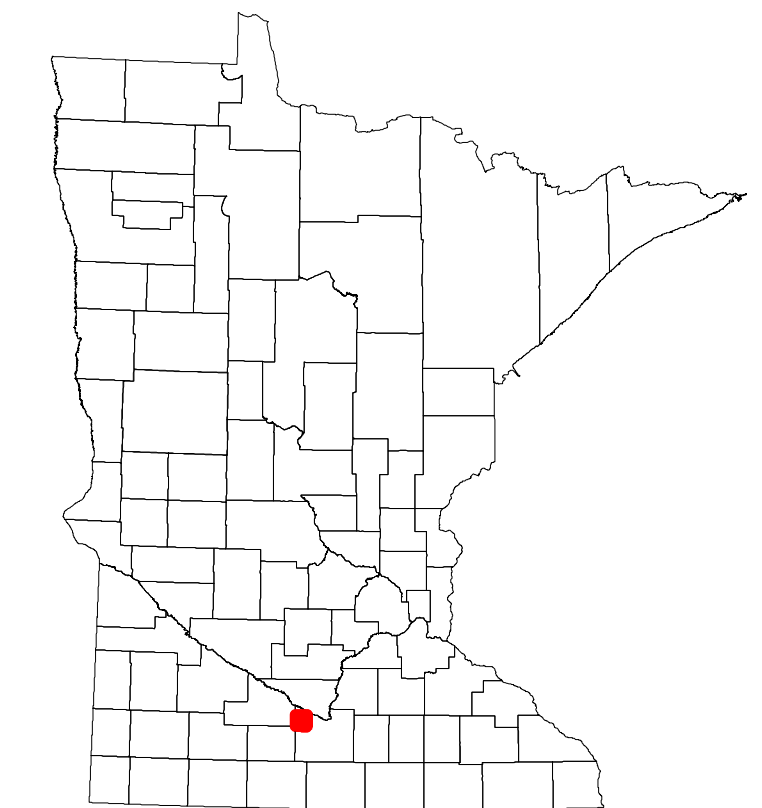
2024

Projection:
Transverse Mercator
NAD 1986
UTM Zone 15

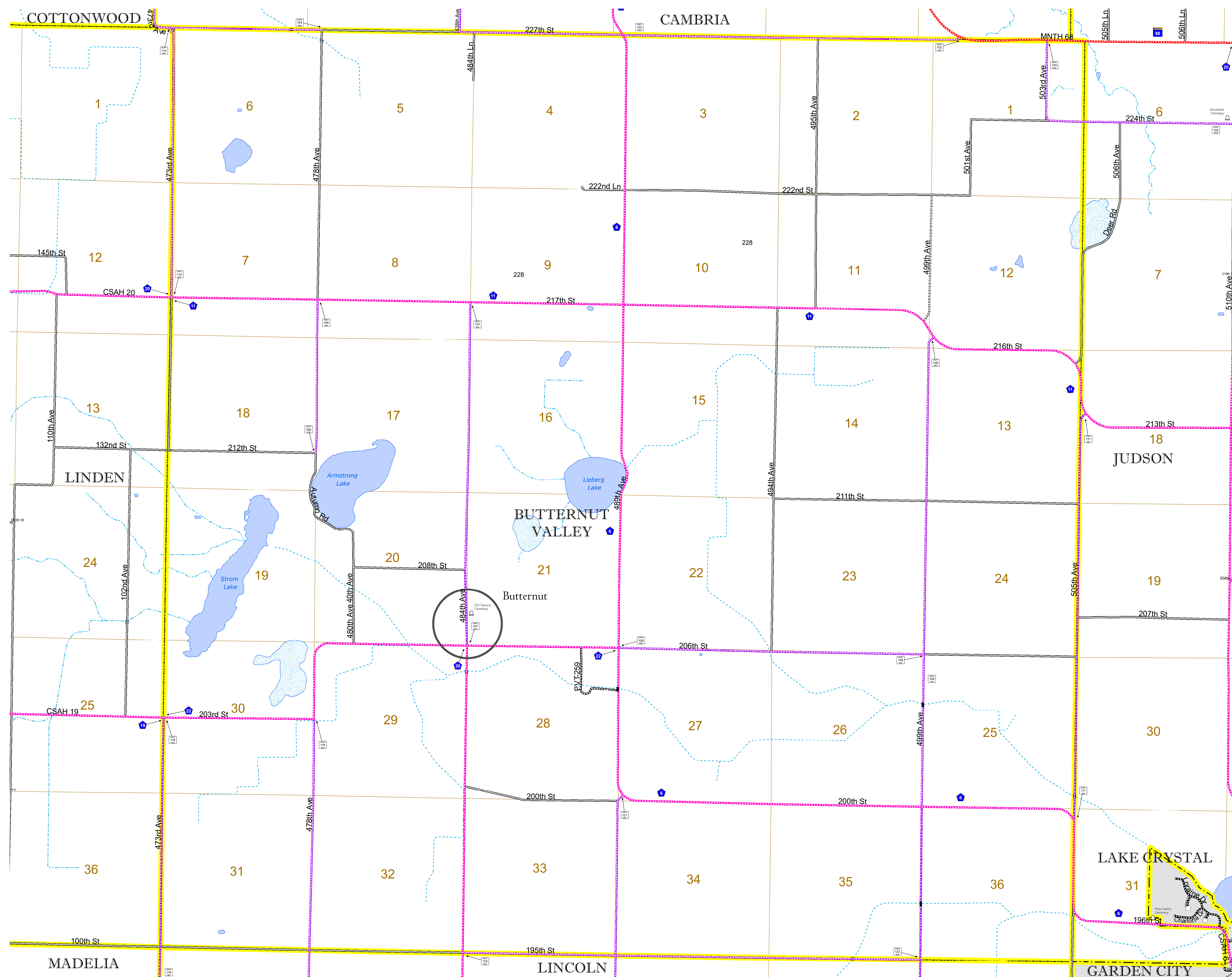


North American Datum
of 1986

ROAD AND ROADWAY FEATURES		RAILROAD AND RAILWAY FEATURES		AVIATION FEATURES		BOUNDARY FEATURES	
INTERSTATE	[Symbol]	EMPIRE BUILDER STATION (AMTRAK)	[Symbol]	COMMERCIAL AIRPORT	[Symbol]	TRIBAL LAND	[Symbol]
US HIGHWAY	[Symbol]	NORTHSTAR STATION (COMMUTER)	[Symbol]	GENERAL AIRPORT	[Symbol]	STATE OF MINNESOTA	[Symbol]
MN HIGHWAY	[Symbol]	LIGHT RAIL	[Symbol]	AIRSTRIP	[Symbol]	COUNTY	[Symbol]
COUNTY STATE AID HIGHWAY	[Symbol]	BLUE LINE	[Symbol]	SEAPLANE	[Symbol]	MUNICIPALITY	[Symbol]
COUNTY ROAD	[Symbol]	GREEN LINE	[Symbol]	AIRPORT RUNWAY	[Symbol]	UNINCORPORATED TOWNSHIP	[Symbol]
TOWNSHIP ROAD	[Symbol]	LONG BRIDGE (200' OR GREATER SPAN)	[Symbol]			FEDERAL ADJUSTED URBAN AREA (2014)	[Symbol]
UNORGANIZED TERRITORY ROAD	[Symbol]	MAJOR BRIDGE (20' TO 200' SPAN)	[Symbol]			CIVIL TOWNSHIP	[Symbol]
OTHER ROADS	[Symbol]	MINOR BRIDGE (5' TO 20' SPAN)	[Symbol]			CONGRESSIONAL TOWNSHIP	[Symbol]
Municipal	[Symbol]	DAM	[Symbol]			SECTION	[Symbol]
Private	[Symbol]	LOCK AND DAM	[Symbol]			MILITARY	[Symbol]
National Monument	[Symbol]					VOYAGEURS NATIONAL PARK	[Symbol]
National Wildlife Refuge	[Symbol]					BOUNDARY WATERS CANOE AREA WILDERNESS	[Symbol]
State Park	[Symbol]					STATE PARK	[Symbol]
Preserve	[Symbol]					REGIONAL PARK	[Symbol]
						NATIONAL FOREST	[Symbol]
						NATIONAL AND STATE FOREST	[Symbol]
						STATE FOREST	[Symbol]
						NATIONAL TRAIL	[Symbol]
						WILDLIFE REFUGE AREA	[Symbol]
						WILDLIFE MANAGEMENT AREA	[Symbol]
						HYDROLOGIC FEATURES	[Symbol]
						RIVER OR STREAM (PERENNIAL)	[Symbol]
						LAKE, POND OR RESERVOIR	[Symbol]
						STREAM (INTERMITTENT)	[Symbol]
						DRAINAGE DITCH	[Symbol]
						WETLAND	[Symbol]
						ISLAND OR LAND	[Symbol]
						REGIONAL WATERSHED	[Symbol]



Population (U.S. Census 2010): 325



To request information from this document in an alternative format, call 651-366-4718 or 1-800-657-3774 (Greater Minnesota); 711 or 1-800-627-3529 (Minnesota Relay). You may also send an e-mail to ADRequest.dot@state.mn.us. (Please request at least one week in advance.)