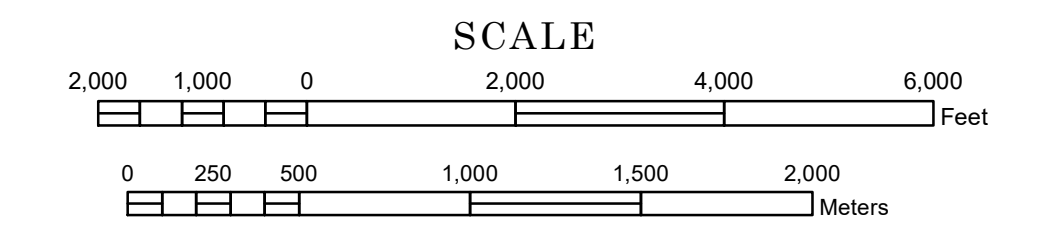


# STREET SERIES MINNEAPOLIS- SAINT PAUL

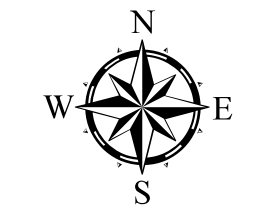
PREPARED BY THE  
MINNESOTA DEPARTMENT OF TRANSPORTATION  
OFFICE OF TRANSPORTATION SYSTEM MANAGEMENT

IN COOPERATION WITH  
U.S. DEPARTMENT OF TRANSPORTATION  
FEDERAL HIGHWAY ADMINISTRATION



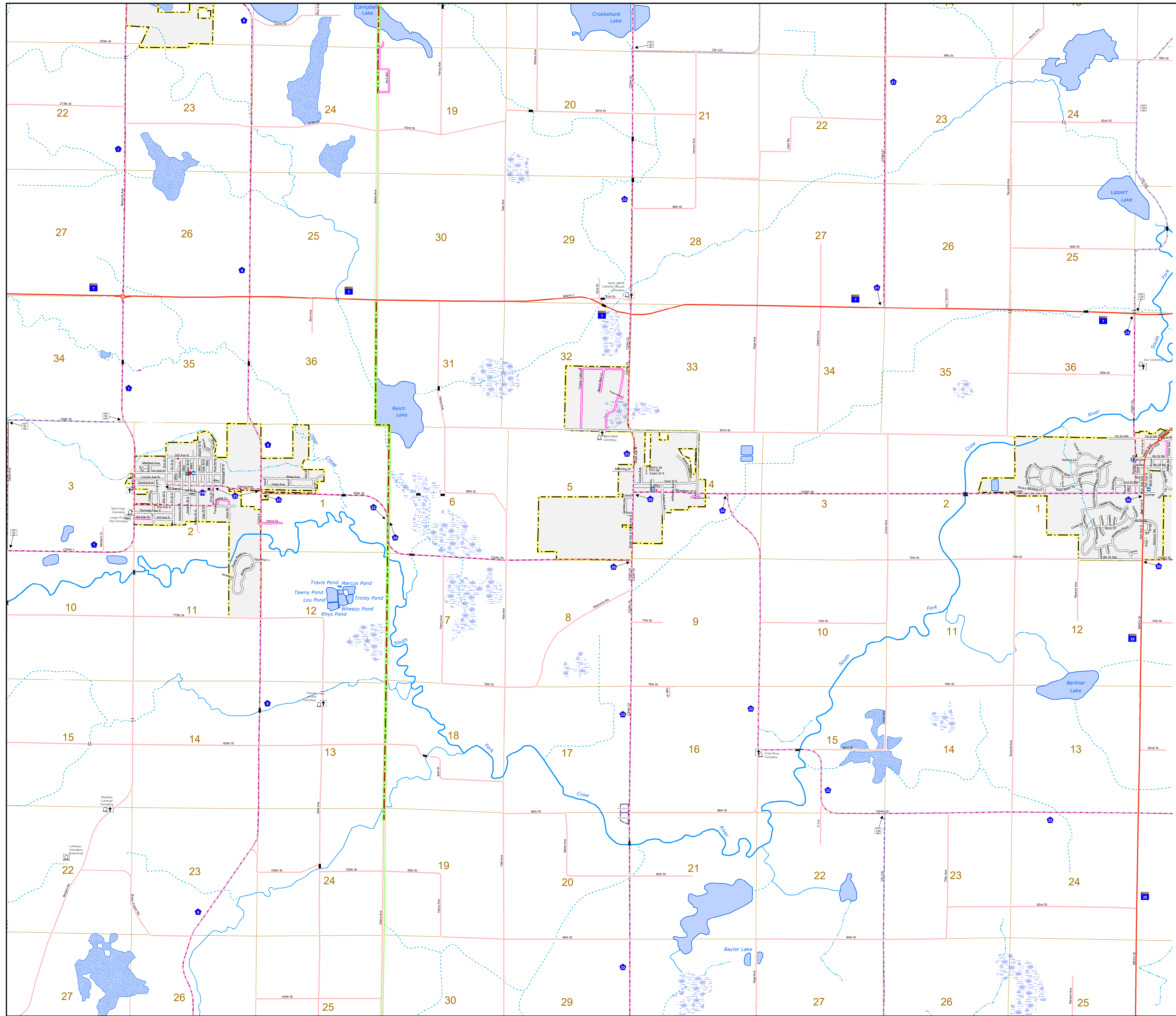
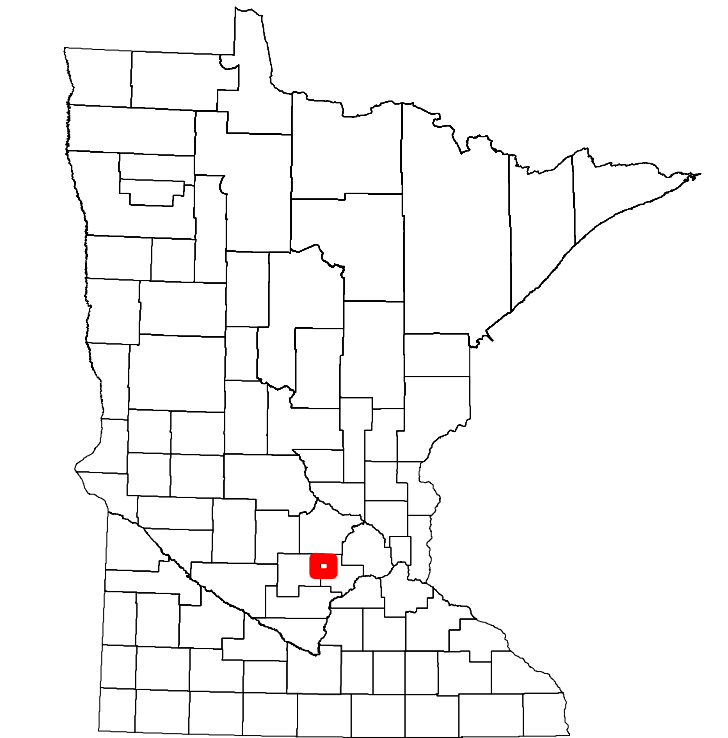
1 in = 1,840 ft  
**2024**

Projection:  
Transverse Mercator  
NAD 1986  
UTM Zone 15



North American Datum  
of 1986

<b>ROAD AND ROADWAY FEATURES</b>	<b>PUBLIC SERVICE FEATURES</b>
INTERSTATE	MINOT OFFICE
US HIGHWAY	MINOT TRUCK STATION
MN HIGHWAY	HIGHWAY PATROL DISTRICT OFFICE
COUNTY STATE AID HIGHWAY	STATE TRAVEL INFORMATION CENTER
COUNTY ROAD	REST AREA (Full Service)
MUNICIPAL STATE AID STREET	REST AREA (Vault Toilet)
MUNICIPAL STREET	WAYSIDE (Vault or Pit Toilet)
PRIVATE STREET/ROAD	LOCAL PARK
TOWNSHIP ROAD	PUBLIC ACCESS POINT
UNORGANIZED TERRITORY ROAD	FAIRGROUNDS
RAMP OR CONNECTOR	PORT OF ENTRY
INTERSTATE EXIT	PARK AND RIDE LOT
GREAT RIVER ROAD	MN STATE COLLEGE AND UNIVERSITY SYSTEM (MNSCU)
OTHER ROADS	UNIVERSITY OF MN SYSTEM
Fenceless	
Shrub Park	
Rough Service	
Mudway	
	<b>CULTURAL FEATURES</b>
	STATE HISTORICAL MARKER
	HISTORIC DISTRICT
	HISTORIC SITE
	MONUMENT
	<b>BOUNDARY FEATURES</b>
	TRIBAL LAND
	COUNTY
	MUNICIPALITY
	ADJACENT MUNICIPALITY
	FEDERAL ADJUSTED URBAN AREA (2014)
	MILITARY
	VOYAGEURS NATIONAL PARK
	BOUNDARY WATERS CANOE AREA WILDERNESS
	STATE PARK
	REGIONAL PARK
	NATIONAL FOREST
	NATIONAL AND STATE FOREST
	STATE FOREST
	NATIONAL TRAIL
	WILDLIFE REFUGE AREA
	WILDLIFE MANAGEMENT AREA
	<b>HYDROLOGIC FEATURES</b>
	RIVER OR STREAM (Perennial)
	LAKE, POND OR RESERVOIR
	STREAM (Intermittent)
	DRAINAGE DITCH
	WETLAND
	ISLAND OR LAND
	REGIONAL WATERSHED
	<b>CITY CENTERS</b>
	TRIBAL GOVERNMENT CENTER
	CITY CENTER
	LOCALLY KNOWN PLACE
	UNINCORPORATED COMMUNITY



To request information from this document in an alternative format, call 651-366-4718 or 1-800-657-3774 (Greater Minnesota); 711 or 1-800-627-3529 (Minnesota Relay). You may also send an e-mail to ADRequest.dot@state.mn.us. (Please request at least one week in advance.)