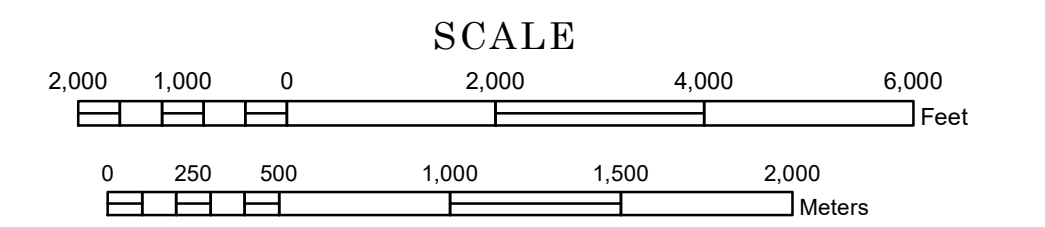


# STREET SERIES MINNEAPOLIS- SAINT PAUL

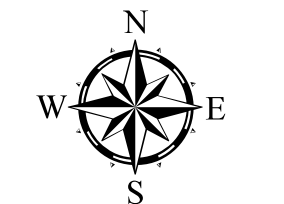
PREPARED BY THE  
MINNESOTA DEPARTMENT OF TRANSPORTATION  
OFFICE OF TRANSPORTATION SYSTEM MANAGEMENT

IN COOPERATION WITH  
U.S. DEPARTMENT OF TRANSPORTATION  
FEDERAL HIGHWAY ADMINISTRATION



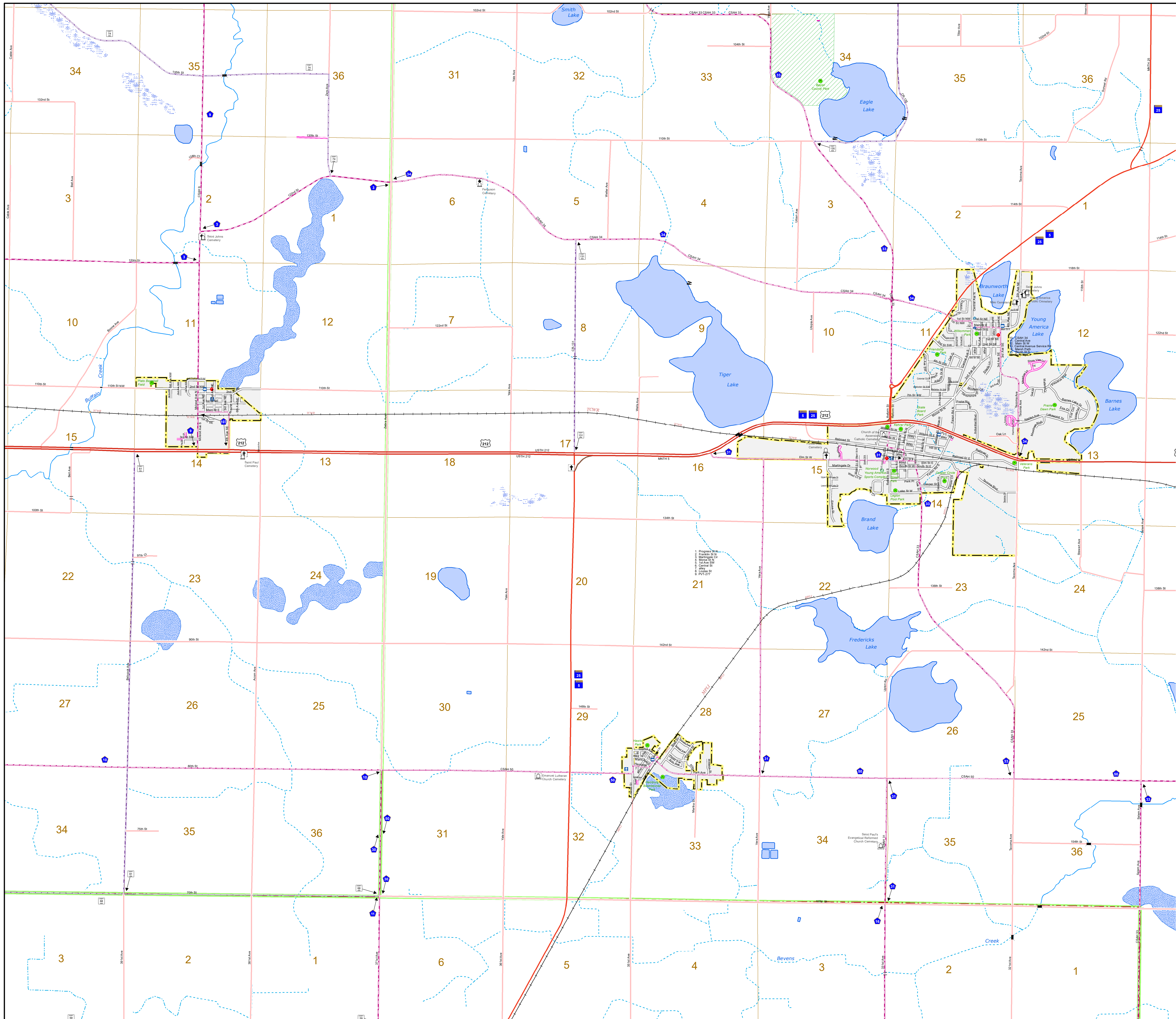
1 in = 1,840 ft

2024

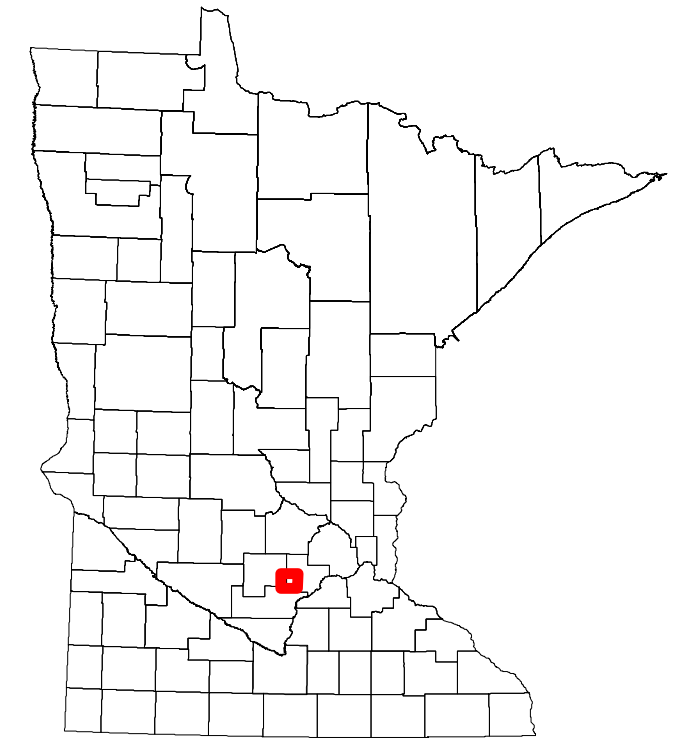


Projection:  
Transverse Mercator  
NAD 1986  
UTM Zone 15

North American Datum  
of 1986



ROAD AND ROADWAY FEATURES		PUBLIC SERVICE FEATURES	
INTERSTATE		MINDOT OFFICE	
US HIGHWAY		MINDOT TRUCK STATION	
MN HIGHWAY		HIGHWAY PATROL DISTRICT OFFICE	
COUNTY STATE AID HIGHWAY		STATE TRAVEL INFORMATION CENTER	
COUNTY ROAD		REST AREA (Full Service)	
MUNICIPAL STATE AID STREET		REST AREA (Vault Toilet)	
MUNICIPAL STREET		WAYSIDE (Vault or Pit Toilet)	
PRIVATE STREET/ROAD		LOCAL PARK	
TOWNSHIP ROAD		PUBLIC ACCESS POINT	
UNORGANIZED TERRITORY ROAD		FAIRGROUNDS	
RAMP OR CONNECTOR		PORT OF ENTRY	
INTERSTATE EXIT		PARK AND RIDE LOT	
GREAT RIVER ROAD		MN STATE COLLEGE AND UNIVERSITY SYSTEM (MNSCU)	
OTHER ROADS		UNIVERSITY OF MN SYSTEM	
Farmhouse		CULTURAL FEATURES	
Shed/Pool		STATE HISTORICAL MARKER	
Home/Barn		HISTORIC DISTRICT	
Mun. Bldg.		HISTORIC SITE	
AVIATION FEATURES		MONUMENT	
COMMERCIAL AIRPORT		BOUNDARY FEATURES	
GENERAL AIRPORT		TRIBAL LAND	
AIRSTRIP		COUNTY	
SEAPLANE		MUNICIPALITY	
AIRPORT RUNWAY		ADJACENT MUNICIPALITY	
RAILROAD AND RAILWAY FEATURES		FEDERAL ADJUSTED URBAN AREA (2014)	
EMPIRE BUILDER STATION (Amtrak)		MILITARY	
NORTHSTAR STATION (Commuter)		VOYAGEURS NATIONAL PARK	
LIGHT RAIL		BOUNDARY WATERS CANOE AREA WILDERNESS	
BLUE LINE		STATE PARK	
GREEN LINE		REGIONAL PARK	
INFRASTRUCTURE FEATURES		NATIONAL FOREST	
LONG BRIDGE (300' or Greater Span)		NATIONAL AND STATE FOREST	
MAJOR BRIDGE (20' to 300' Span)		STATE FOREST	
MINOR BRIDGE (5' to 20' Span)		NATIONAL TRAIL	
DAM		WILDLIFE REFUGUE AREA	
LOCK AND DAM		WILDLIFE MANAGEMENT AREA	
PUBLIC FACILITIES		HYDROLOGIC FEATURES	
STATE CAPITOL		RIVER OR STREAM (Perennial)	
FEDERAL COURTHOUSE		LAKE, POND OR RESERVOIR	
COUNTY COURTHOUSE		STREAM (Intermittent)	
ARMORY		DRAINAGE DITCH	
CITY CENTERS		WETLAND	
TRIBAL GOVERNMENT CENTER		ISLAND OR LAND	
CITY CENTER		REGIONAL WATERSHED	
LOCALLY KNOWN PLACE			
UNINCORPORATED COMMUNITY			



To request information from this document in an alternative format, call 651-366-4718 or 1-800-657-3774 (Greater Minnesota); 711 or 1-800-627-3529 (Minnesota Relay). You may also send an e-mail to ADRequest.dot@state.mn.us. (Please request at least one week in advance.)