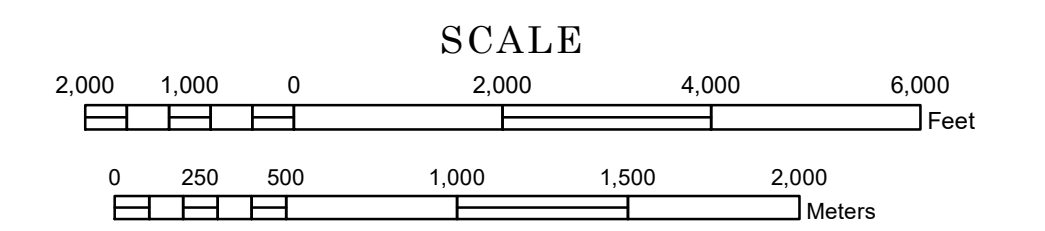


STREET SERIES MINNEAPOLIS- SAINT PAUL

PREPARED BY THE
MINNESOTA DEPARTMENT OF TRANSPORTATION
OFFICE OF TRANSPORTATION SYSTEM MANAGEMENT

IN COOPERATION WITH
U.S. DEPARTMENT OF TRANSPORTATION
FEDERAL HIGHWAY ADMINISTRATION

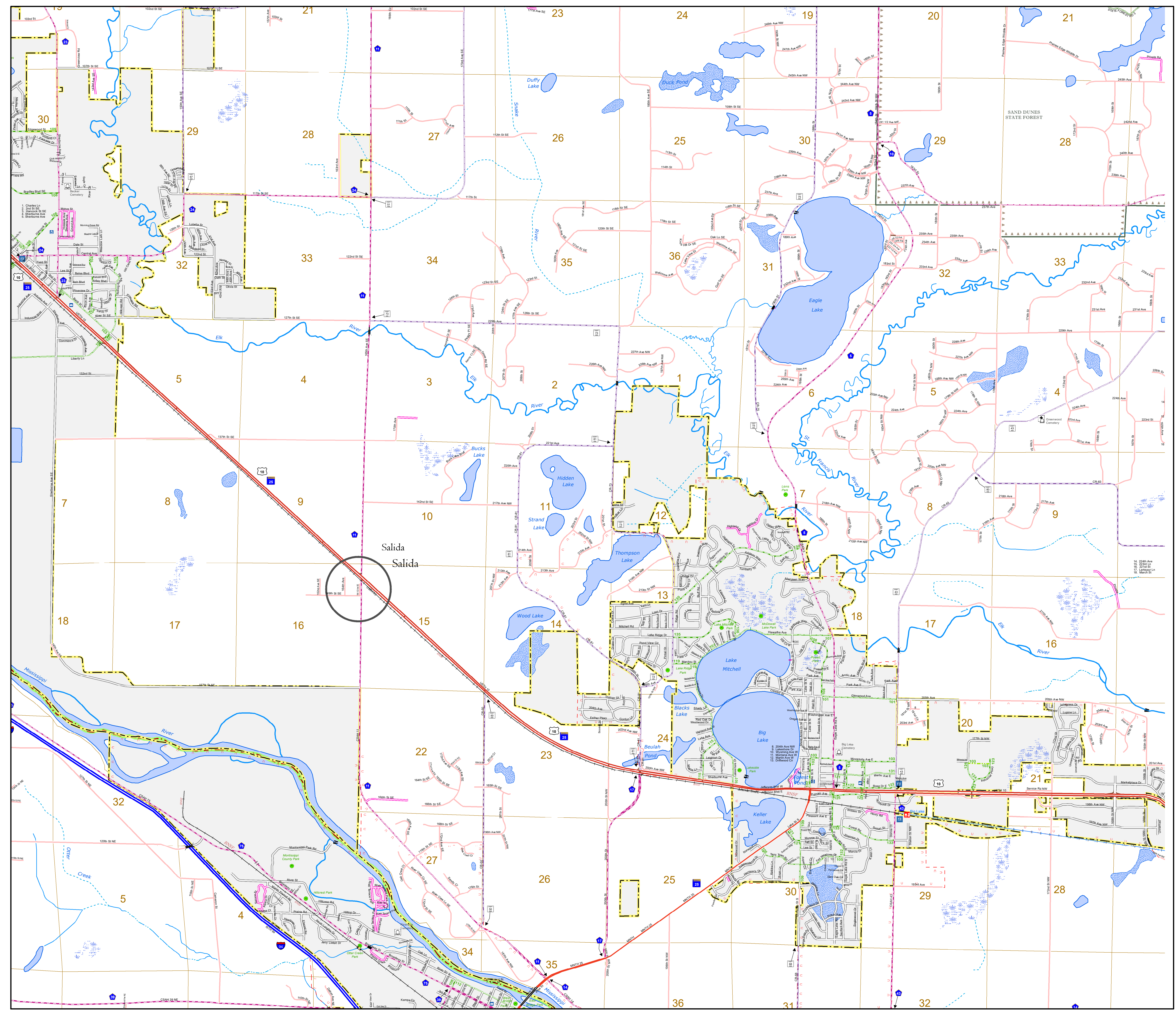
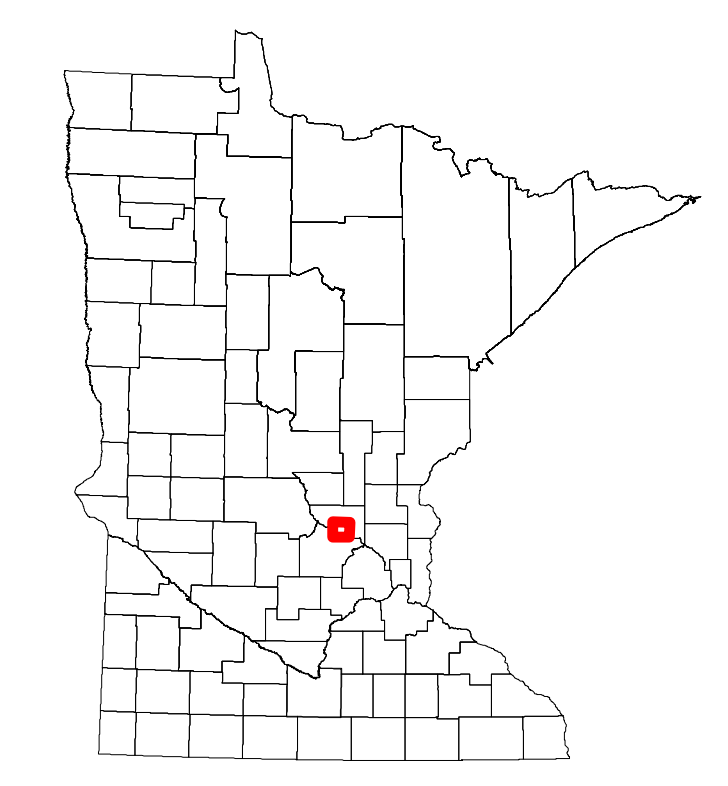


1 in = 1,840 ft

2024



<p>ROAD AND ROADWAY FEATURES</p> <ul style="list-style-type: none"> INTERSTATE US HIGHWAY MN HIGHWAY COUNTY STATE AID HIGHWAY COUNTY ROAD MUNICIPAL STATE AID STREET MUNICIPAL STREET PRIVATE STREET/ROAD TOWNSHIP ROAD UNORGANIZED TERRITORY ROAD RAMP OR CONNECTOR INTERSTATE EXIT GREAT RIVER ROAD OTHER ROADS COMMERCIAL AIRPORT GENERAL AIRPORT AIRSTRIP SEAPLANE AIRPORT RUNWAY RAILWAY EMPIRE BUILDER STATION (Aerial) NORTHSTAR STATION (Commuter) LIGHT RAIL BLUE LINE GREEN LINE LONG BRIDGE (300' or Greater Span) MAJOR BRIDGE (20' to 300' Span) MINOR BRIDGE (5' to 20' Span) LOCK AND DAM STATE CAPITOL FEDERAL COURTHOUSE COUNTY COURTHOUSE ARMORY 	<p>PUBLIC SERVICE FEATURES</p> <ul style="list-style-type: none"> MINDOT OFFICE MINDOT TRUCK STATION HIGHWAY PATROL DISTRICT OFFICE STATE TRAVEL INFORMATION CENTER REST AREA (Full Service) REST AREA (Vault Toilet) WAYSIDE (Vault or Pit Toilet) LOCAL PARK PUBLIC ACCESS POINT FAIRGROUNDS PORT OF ENTRY PARK AND RIDE LOT MN STATE COLLEGE AND UNIVERSITY SYSTEM (MNSCU) UNIVERSITY OF MN SYSTEM STATE HISTORICAL MARKER HISTORIC DISTRICT HISTORIC SITE MONUMENT 	<p>BOUNDARY FEATURES</p> <ul style="list-style-type: none"> TRIBAL LAND COUNTY MUNICIPALITY ADJACENT MUNICIPALITY FEDERAL ADJUSTED URBAN AREA (2014) MILITARY VOYAGEURS NATIONAL PARK BOUNDARY WATERS CANOE AREA WILDERNESS STATE PARK REGIONAL PARK NATIONAL FOREST NATIONAL AND STATE FOREST STATE FOREST NATIONAL TRAIL WILDLIFE REFUGE AREA WILDLIFE MANAGEMENT AREA HYDROLOGIC FEATURES RIVER OR STREAM (Perennial) LAKE, POND OR RESERVOIR STREAM (Intermittent) DRAINAGE DITCH WETLAND ISLAND OR LAND REGIONAL WATERSHED 	<p>CITY CENTERS</p> <ul style="list-style-type: none"> TRIBAL GOVERNMENT CENTER CITY CENTER LOCALLY KNOWN PLACE UNINCORPORATED COMMUNITY
--	---	--	---



To request information from this document in an alternative format, call 651-366-4718 or 1-800-657-3774 (Greater Minnesota); 711 or 1-800-627-3529 (Minnesota Relay). You may also send an e-mail to ADRequest.dot@state.mn.us. (Please request at least one week in advance.)