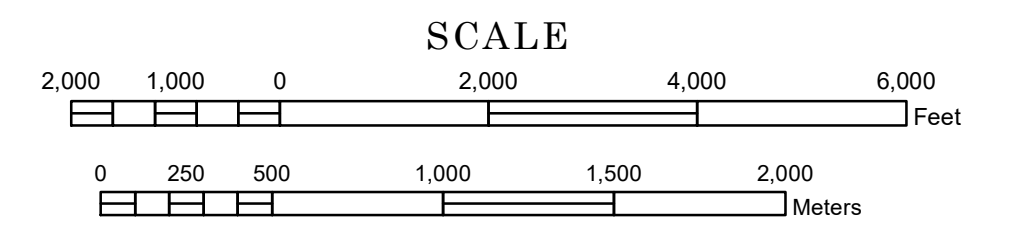


STREET SERIES MINNEAPOLIS- SAINT PAUL

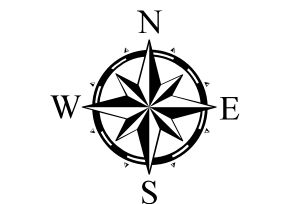
PREPARED BY THE
MINNESOTA DEPARTMENT OF TRANSPORTATION
OFFICE OF TRANSPORTATION SYSTEM MANAGEMENT

IN COOPERATION WITH
U.S. DEPARTMENT OF TRANSPORTATION
FEDERAL HIGHWAY ADMINISTRATION



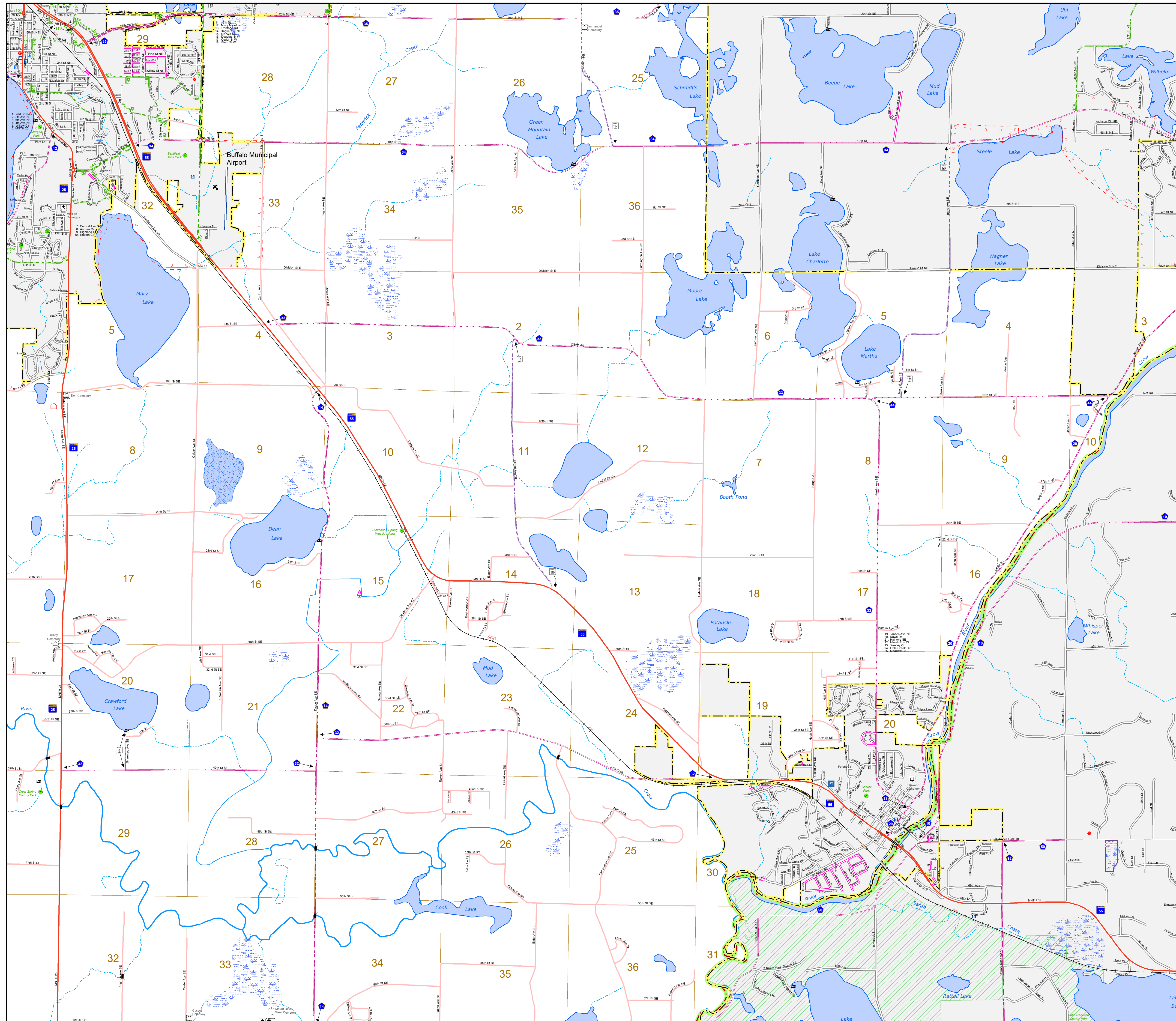
1 in = 1,840 ft

2024



Projection:
Transverse Mercator
NAD 1986
UTM Zone 15

North American Datum
of 1986



ROAD AND ROADWAY FEATURES	PUBLIC SERVICE FEATURES
INTERSTATE	MINDOT OFFICE
US HIGHWAY	MINDOT TRUCK STATION
MN HIGHWAY	HIGHWAY PATROL DISTRICT OFFICE
COUNTY STATE AID HIGHWAY	STATE TRAVEL INFORMATION CENTER
COUNTY ROAD	REST AREA (Full Service)
MUNICIPAL STATE AID STREET	REST AREA (Vault Toilet)
MUNICIPAL STREET	WAYSIDE (Vault or Pit Toilet)
PRIVATE STREET/ROAD	LOCAL PARK
TOWNSHIP ROAD	PUBLIC ACCESS POINT
UNORGANIZED TERRITORY ROAD	FAIRGROUNDS
RAMP OR CONNECTOR	PORT OF ENTRY
INTERSTATE EXIT	PARK AND RIDE LOT
GREAT RIVER ROAD	MN STATE COLLEGE AND UNIVERSITY SYSTEM (MNSCU)
OTHER ROADS	UNIVERSITY OF MN SYSTEM
Farmhouse	CULTURAL FEATURES
Shed	STATE HISTORICAL MARKER
Home Business	HISTORIC DISTRICT
National Forest	HISTORIC SITE
National Wildlife Refuge	MONUMENT
Municipal	BOUNDARY FEATURES
Commercial Airport	TRIBAL LAND
General Airport	COUNTY
Airstrip	MUNICIPALITY
Seaplane	ADJACENT MUNICIPALITY
Airport Runway	FEDERAL ADJUSTED URBAN AREA (2014)
RAILROAD AND RAILWAY FEATURES	MILITARY
Empire Builder Station (Amtrak)	VOYAGEURS NATIONAL PARK
Northstar Station (Commuter)	BOUNDARY WATERS CANOE AREA WILDERNESS
Light Rail	STATE PARK
Blue Line	REGIONAL PARK
Green Line	NATIONAL FOREST
INFRASTRUCTURE FEATURES	NATIONAL AND STATE FOREST
Long Bridge (300' or Greater Span)	STATE FOREST
Major Bridge (20' to 300' Span)	NATIONAL TRAIL
Minor Bridge (5' to 20' Span)	WILDLIFE REFUGE AREA
DAM	WILDLIFE MANAGEMENT AREA
Lock and Dam	HYDROLOGIC FEATURES
STATE CAPITOL	RIVER OR STREAM (Perennial)
FEDERAL COURTHOUSE	LAKE, POND OR RESERVOIR
COUNTY COURTHOUSE	STREAM (Intermittent)
ANCHORY	DRAINAGE DITCH
CITY CENTERS	WETLAND
TRIBAL GOVERNMENT CENTER	ISLAND OR LAND
CITY CENTER	REGIONAL WATERSHED
LOCALLY KNOWN PLACE	
UNINCORPORATED COMMUNITY	

