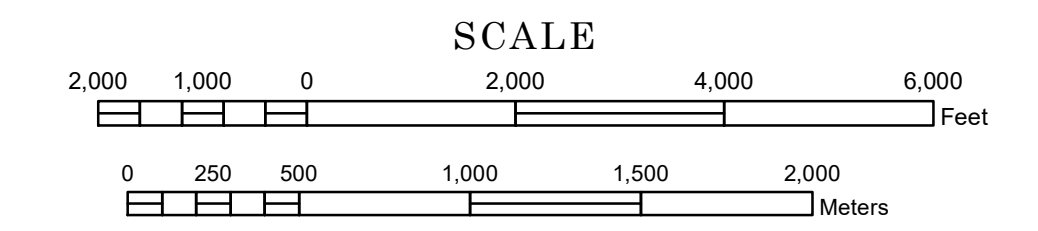


STREET SERIES MINNEAPOLIS- SAINT PAUL

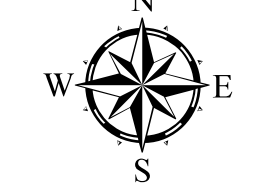
PREPARED BY THE
MINNESOTA DEPARTMENT OF TRANSPORTATION
OFFICE OF TRANSPORTATION SYSTEM MANAGEMENT

IN COOPERATION WITH
U.S. DEPARTMENT OF TRANSPORTATION
FEDERAL HIGHWAY ADMINISTRATION



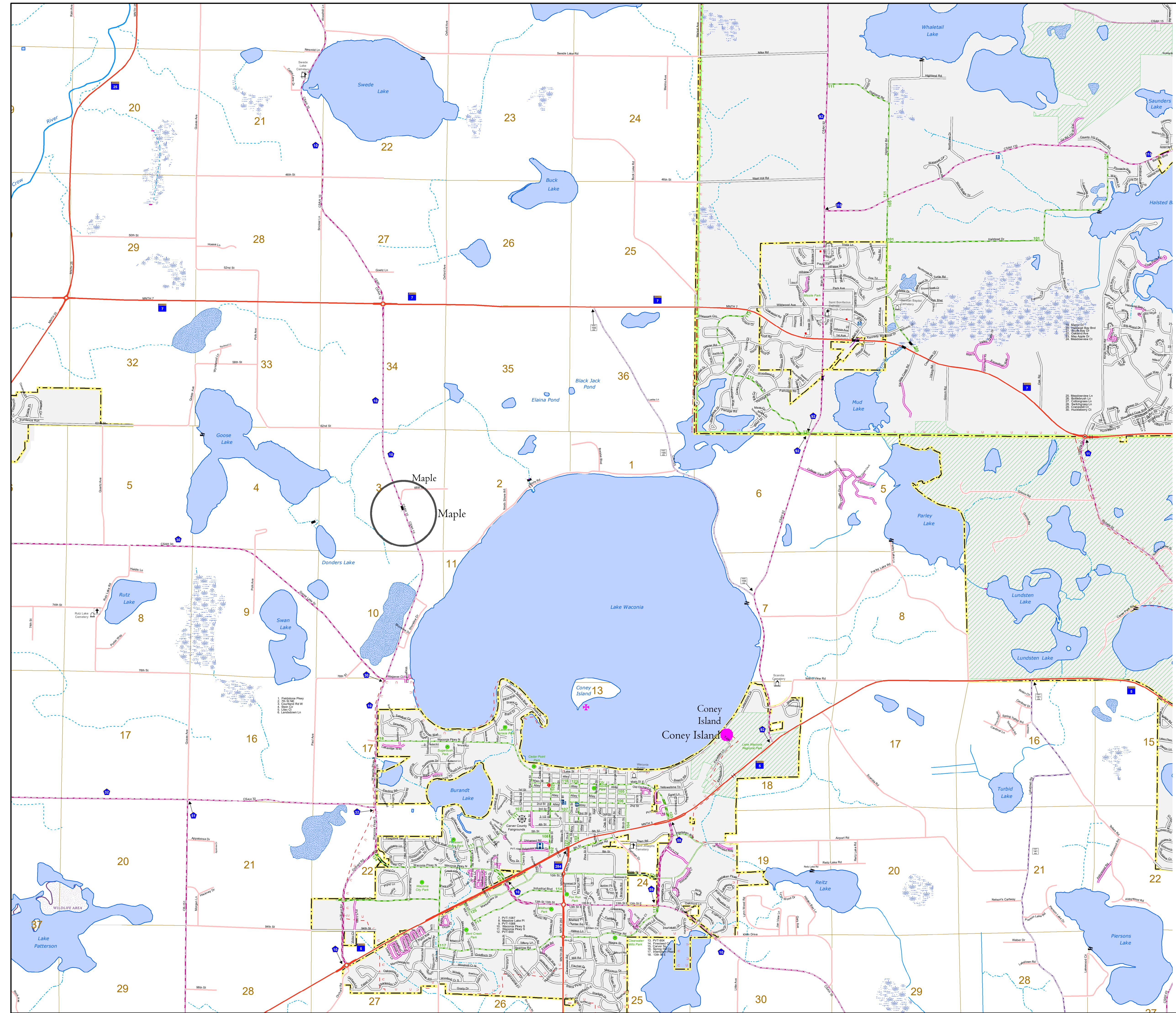
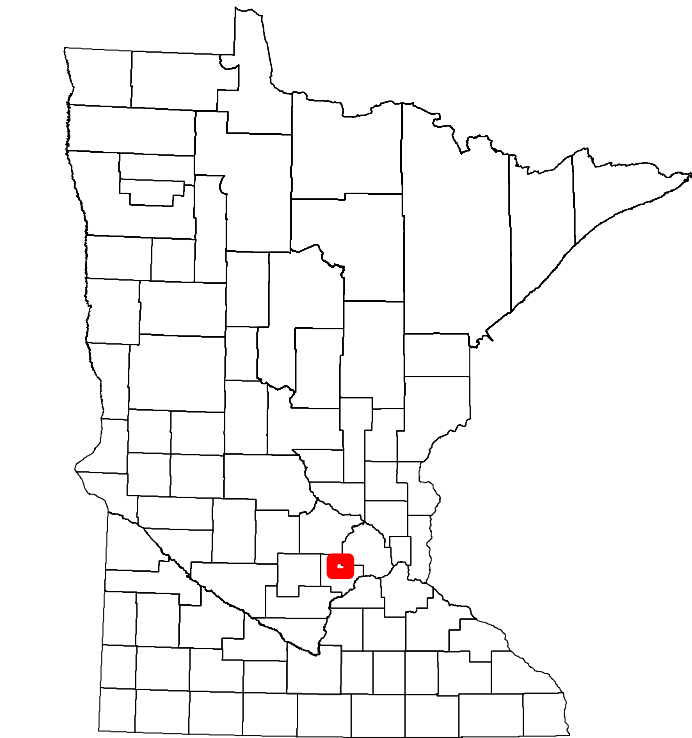
1 in = 1,840 ft
2024

Projection:
Transverse Mercator
NAD 1986
UTM Zone 15



North American Datum
of 1986

ROAD AND ROADWAY FEATURES		PUBLIC SERVICE FEATURES	
INTERSTATE		MINDOT OFFICE	
US HIGHWAY		MINDOT TRUCK STATION	
MN HIGHWAY		HIGHWAY PATROL DISTRICT OFFICE	
COUNTY STATE AID HIGHWAY		STATE TRAVEL INFORMATION CENTER	
COUNTY ROAD		REST AREA (Full Service)	
MUNICIPAL STATE AID STREET		REST AREA (Vault Toilet)	
MUNICIPAL STREET		WAYSIDE (Vault or Pit Toilet)	
PRIVATE STREET/ROAD		LOCAL PARK	
TOWNSHIP ROAD		PUBLIC ACCESS POINT	
UNORGANIZED TERRITORY ROAD		FAIRGROUNDS	
RAMP OR CONNECTOR		PORT OF ENTRY	
INTERSTATE EXIT		PARK AND RIDE LOT	
GREAT RIVER ROAD		MN STATE COLLEGE AND UNIVERSITY SYSTEM (MNSCU)	
OTHER ROADS		UNIVERSITY OF MN SYSTEM	
Farmhouse		State Forest	
Shed		National Forest	
Home		National Monument	
Business		National Wildlife Refuge	
Mun. Bldg.		National Historic Landmark	
Commercial Airport		Historic District	
General Airport		Historic Site	
Airstrip		Monument	
Seaplane		TRIBAL LAND	
Airport Runway		COUNTY	
RAILROAD AND RAILWAY FEATURES		MUNICIPALITY	
RAILWAY		ADJACENT MUNICIPALITY	
EMPIRE BUILDER STATION (Aerial)		FEDERAL ADJUSTED URBAN AREA (2014)	
NORTHSTAR STATION (Commuter)		MILITARY	
LIGHT RAIL		VOYAGEURS NATIONAL PARK	
BLUE LINE		BOUNDARY WATERS CANOE AREA WILDERNESS	
GREEN LINE		STATE PARK	
LONG BRIDGE (300' or Greater Span)		REGIONAL PARK	
MAJOR BRIDGE (20' to 300' Span)		NATIONAL FOREST	
MINOR BRIDGE (5' to 20' Span)		NATIONAL AND STATE FOREST	
DAM		STATE FOREST	
LOCK AND DAM		NATIONAL TRAIL	
STATE CAPITOL		WILDLIFE REFUGE AREA	
FEDERAL COURTHOUSE		WILDLIFE MANAGEMENT AREA	
COUNTY COURTHOUSE		RIVER OR STREAM (Perennial)	
ARMORY		LAKE, POND OR RESERVOIR	
		STREAM (Intermittent)	
		DRAINAGE DITCH	
		WETLAND	
		ISLAND OR LAND	
		REGIONAL WATERSHED	
		CITY CENTERS	
TRIBAL GOVERNMENT CENTER		CITY CENTER	
		LOCALLY KNOWN PLACE	
		UNINCORPORATED COMMUNITY	



To request information from this document in an alternative format, call 651-366-4718 or 1-800-657-3774 (Greater Minnesota); 711 or 1-800-627-3529 (Minnesota Relay). You may also send an e-mail to ADRequest.dot@state.mn.us. (Please request at least one week in advance.)