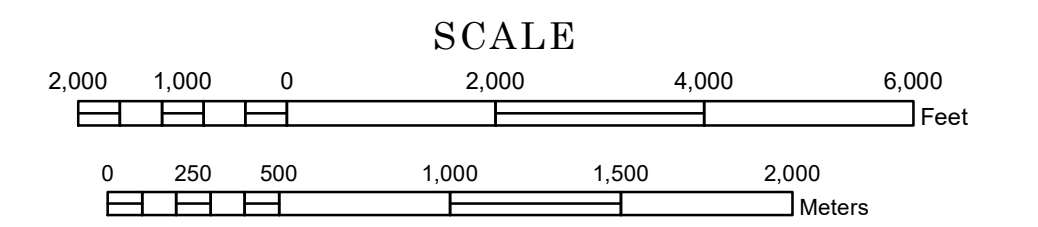


STREET SERIES MINNEAPOLIS- SAINT PAUL

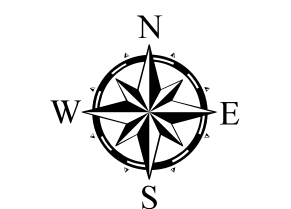
PREPARED BY THE
MINNESOTA DEPARTMENT OF TRANSPORTATION
OFFICE OF TRANSPORTATION SYSTEM MANAGEMENT

IN COOPERATION WITH
U.S. DEPARTMENT OF TRANSPORTATION
FEDERAL HIGHWAY ADMINISTRATION



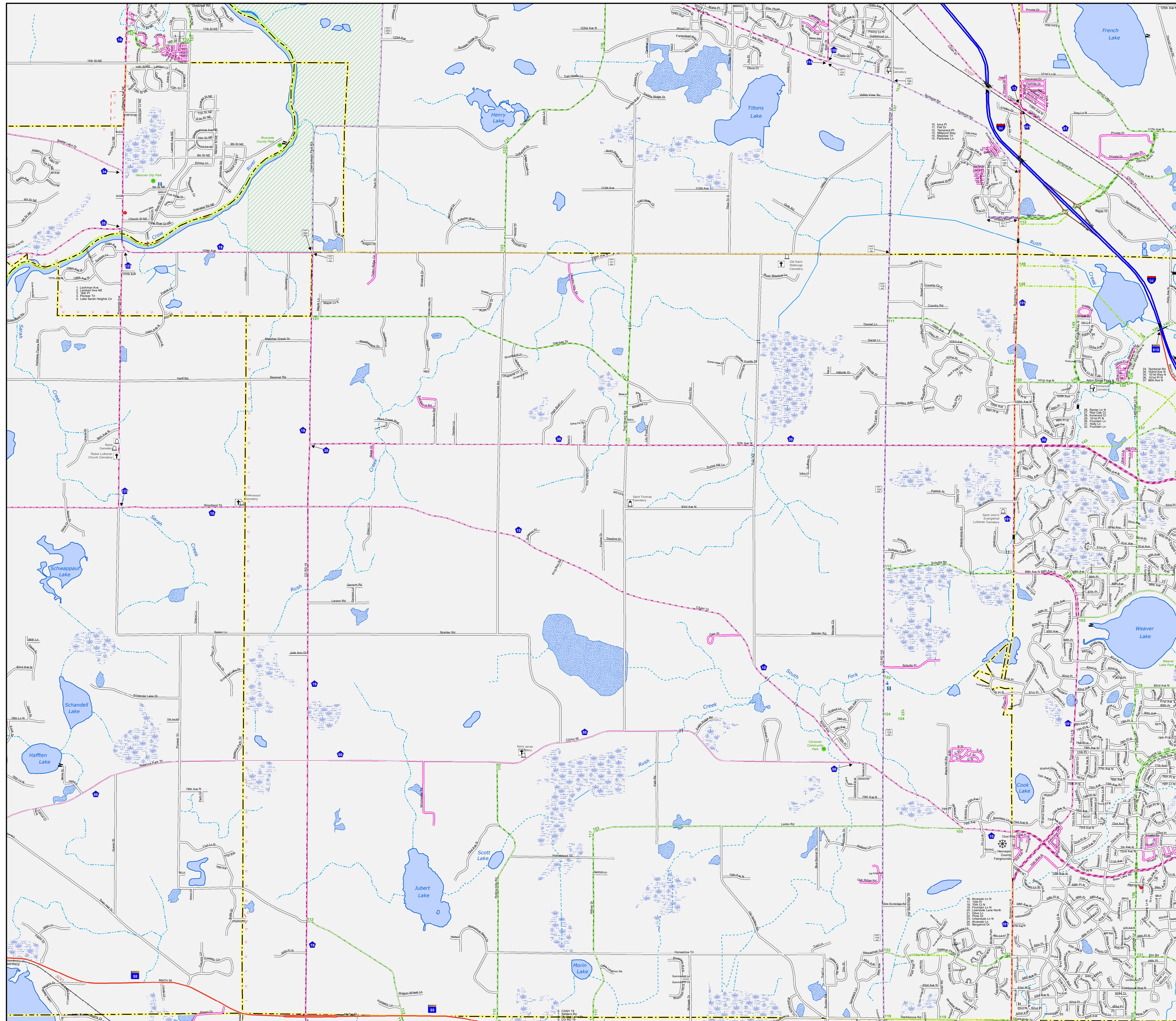
1 in = 1,840 ft

2024

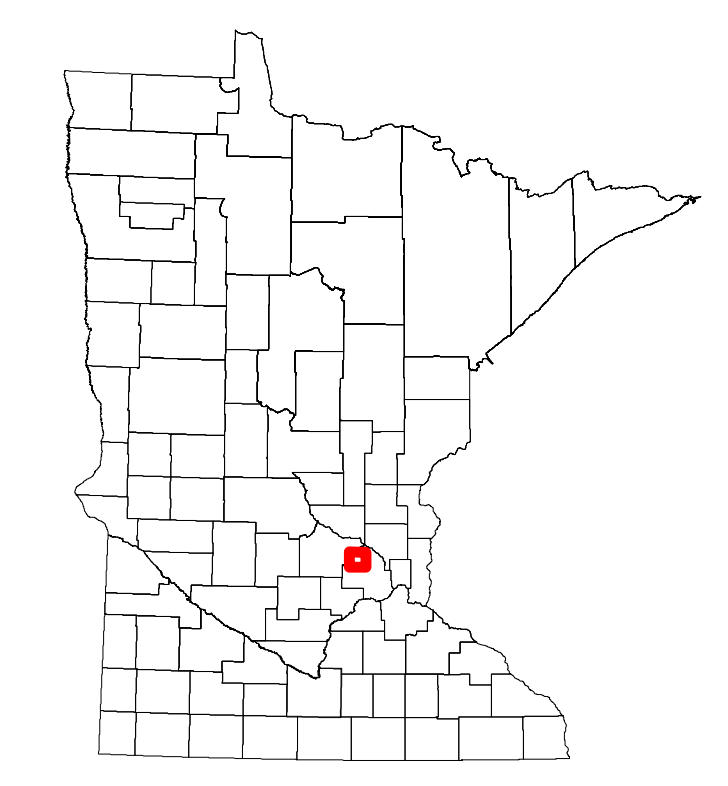


Projection:
Transverse Mercator
NAD 1986
UTM Zone 15

North American Datum
of 1986



ROAD AND ROADWAY FEATURES	PUBLIC SERVICE FEATURES
INTERSTATE	MINDOT OFFICE
US HIGHWAY	MINDOT TRUCK STATION
MN HIGHWAY	HIGHWAY PATROL DISTRICT OFFICE
COUNTY STATE AID HIGHWAY	STATE TRAVEL INFORMATION CENTER
COUNTY ROAD	REST AREA (Full Service)
MUNICIPAL STATE AID STREET	REST AREA (Walk-Tolerant)
MUNICIPAL STREET	WAYSIDE (Walk or Pit Tolerant)
PRIVATE STREET/ROAD	LOCAL PARK
TOWNSHIP ROAD	PUBLIC ACCESS POINT
UNORGANIZED TERRITORY ROAD	FAIRGROUNDS
RAMP OR CONNECTOR	PORT OF ENTRY
INTERSTATE EXIT	PARK AND RIDE LOT
GREAT RIVER ROAD	MN STATE COLLEGE AND UNIVERSITY SYSTEM (MNSCU)
OTHER ROADS	UNIVERSITY OF MN SYSTEM
Farmhouse	CULTURAL FEATURES
Shed	STATE HISTORICAL MARKER
Shrine	HISTORIC DISTRICT
Monument	HISTORIC SITE
Monument	MONUMENT
AVIATION FEATURES	BOUNDARY FEATURES
COMMERCIAL AIRPORT	TRIBAL LAND
GENERAL AIRPORT	COUNTY
AIRSTRIP	MUNICIPALITY
SEAPLANE	ADJACENT MUNICIPALITY
AIRPORT RUNWAY	FEDERAL ADJUSTED URBAN AREA (2014)
RAILWAY	MILITARY
EMPIRE BUILDER STATION (Amtrak)	VOYAGEURS NATIONAL PARK
NORTHSTAR STATION (Commuter)	BOUNDARY WATERS CANOE AREA WILDERNESS
LIGHT RAIL	STATE PARK
BLUE LINE	REGIONAL PARK
GREEN LINE	NATIONAL FOREST
LONG BRIDGE (300' or Greater Span)	NATIONAL AND STATE FOREST
MAJOR BRIDGE (20' to 300' Span)	STATE FOREST
MINOR BRIDGE (5' to 20' Span)	NATIONAL TRAIL
DAM	WILDLIFE REFUGE AREA
LOCK AND DAM	WILDLIFE MANAGEMENT AREA
STATE CAPITOL	HYDROLOGIC FEATURES
FEDERAL COURTHOUSE	RIVER OR STREAM (Perennial)
COUNTY COURTHOUSE	LAKE, POND OR RESERVOIR
ARMORY	STREAM (Intermittent)
CITY CENTERS	DRAINAGE DITCH
TRIBAL GOVERNMENT CENTER	WETLAND
CITY CENTER	ISLAND OR LAND
LOCALLY KNOWN PLACE	REGIONAL WATERSHED
UNINCORPORATED COMMUNITY	



To request information from this document in an alternative format, call 651-366-4718 or 1-800-657-3774 (Greater Minnesota); 711 or 1-800-627-3529 (Minnesota Relay). You may also send an e-mail to ADRequest.dot@state.mn.us. (Please request at least one week in advance.)