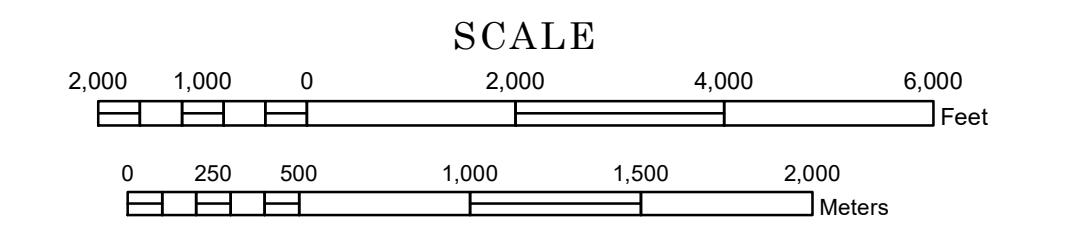


STREET SERIES MINNEAPOLIS- SAINT PAUL

PREPARED BY THE
MINNESOTA DEPARTMENT OF TRANSPORTATION
OFFICE OF TRANSPORTATION SYSTEM MANAGEMENT

IN COOPERATION WITH
U.S. DEPARTMENT OF TRANSPORTATION
FEDERAL HIGHWAY ADMINISTRATION



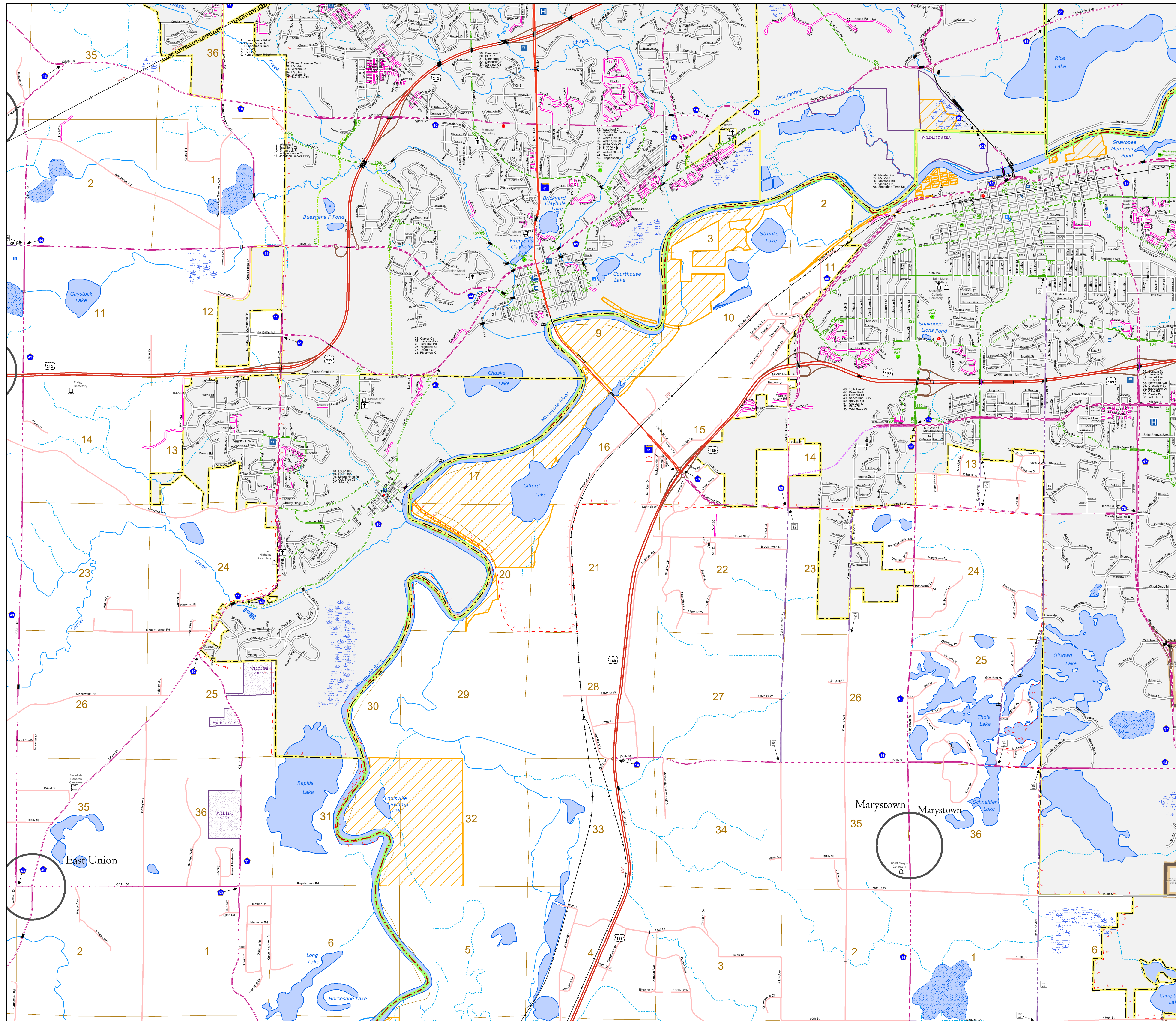
1 in = 1,840 ft

2024

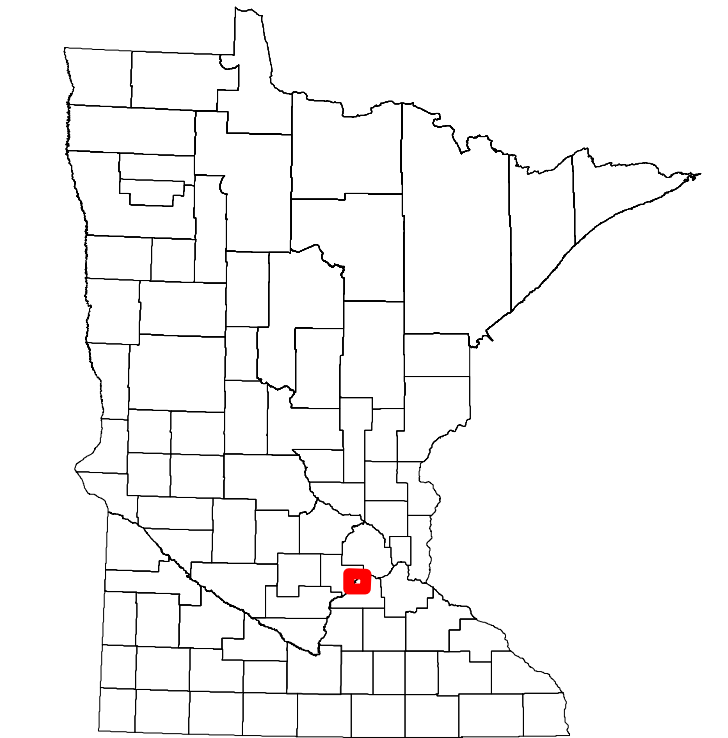


Projection:
Transverse Mercator
NAD 1986
UTM Zone 15

North American Datum
of 1986



ROAD AND ROADWAY FEATURES		PUBLIC SERVICE FEATURES	
INTERSTATE		MINDOT OFFICE	
US HIGHWAY		MINDOT TRUCK STATION	
MN HIGHWAY		HIGHWAY PATROL DISTRICT OFFICE	
COUNTY STATE AID HIGHWAY		STATE TRAVEL INFORMATION CENTER	
COUNTY ROAD		REST AREA (Full Service)	
MUNICIPAL STATE AID STREET		REST AREA (Vault Toilet)	
MUNICIPAL STREET		WAYSIDE (Vault or Pit Toilet)	
PRIVATE STREET/ROAD		LOCAL PARK	
TOWNSHIP ROAD		PUBLIC ACCESS POINT	
UNORGANIZED TERRITORY ROAD		FAIRGROUNDS	
RAMP OR CONNECTOR		PORT OF ENTRY	
INTERSTATE EXIT		PARK AND RIDE LOT	
GREAT RIVER ROAD		MN STATE COLLEGE AND UNIVERSITY SYSTEM (MNSCU)	
OTHER ROADS		UNIVERSITY OF MN SYSTEM	
Farmhouse		CULTURAL FEATURES	
Shed		STATE HISTORICAL MARKER	
Stone Service		HISTORIC DISTRICT	
Munitor		HISTORIC SITE	
		MONUMENT	
		BOUNDARY FEATURES	
		TRIBAL LAND	
		COUNTY	
		MUNICIPALITY	
		ADJACENT MUNICIPALITY	
		FEDERAL ADJUSTED URBAN AREA (2014)	
		MILITARY	
		VOYAGEURS NATIONAL PARK	
		BOUNDARY WATERS CANOE AREA WILDERNESS	
		STATE PARK	
		REGIONAL PARK	
		NATIONAL FOREST	
		NATIONAL AND STATE FOREST	
		STATE FOREST	
		NATIONAL TRAIL	
		WILDLIFE REFUGE AREA	
		WILDLIFE MANAGEMENT AREA	
		HYDROLOGIC FEATURES	
		RIVER OR STREAM (Perennial)	
		LAKE, POND OR RESERVOIR	
		STREAM (Intermittent)	
		DRAINAGE DITCH	
		WETLAND	
		ISLAND OR LAND	
		REGIONAL WATERSHED	
		CITY CENTERS	
		TRIBAL GOVERNMENT CENTER	
		CITY CENTER	
		LOCALLY KNOWN PLACE	
		UNINCORPORATED COMMUNITY	



To request information from this document in an alternative format, call 651-366-4718 or 1-800-657-3774 (Greater Minnesota), or 1-800-627-3529 (Minnesota Relay). You may also send an e-mail to ADRequest.dot@state.mn.us. (Please request at least one week in advance.)