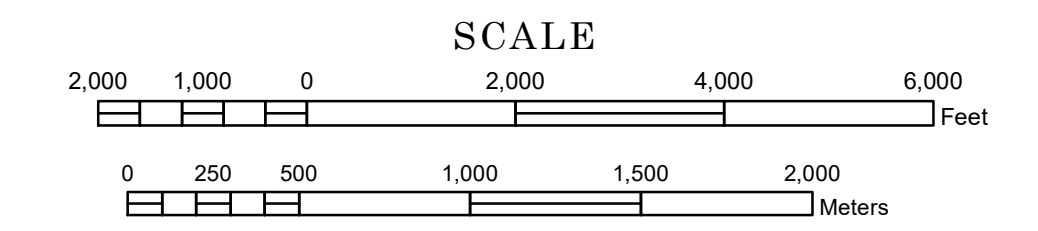


STREET SERIES MINNEAPOLIS- SAINT PAUL

PREPARED BY THE
MINNESOTA DEPARTMENT OF TRANSPORTATION
OFFICE OF TRANSPORTATION SYSTEM MANAGEMENT

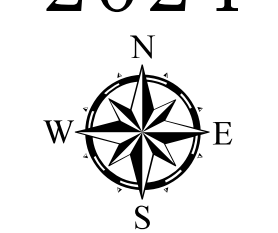
IN COOPERATION WITH
U.S. DEPARTMENT OF TRANSPORTATION
FEDERAL HIGHWAY ADMINISTRATION



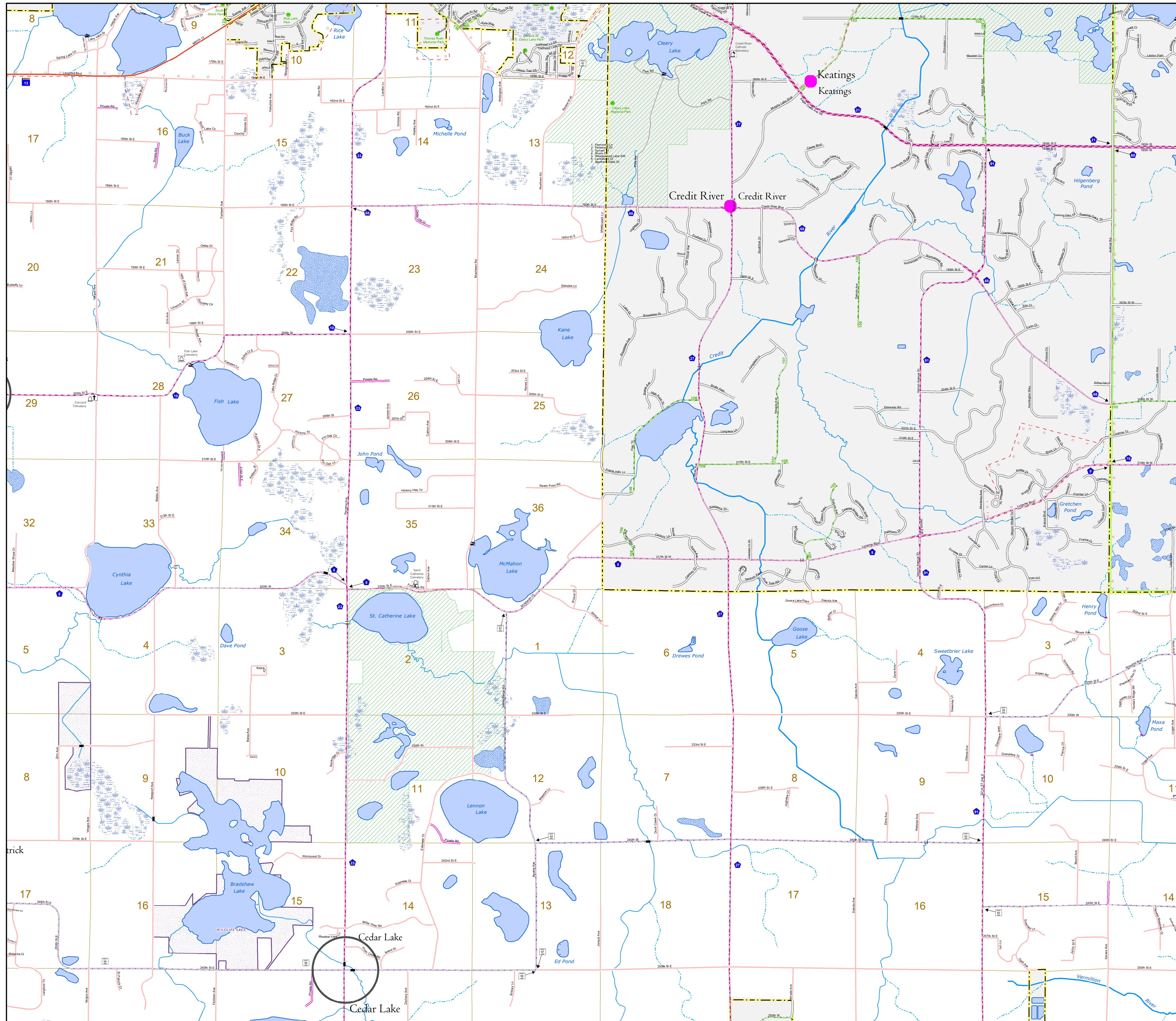
1 in = 1,840 ft

2024

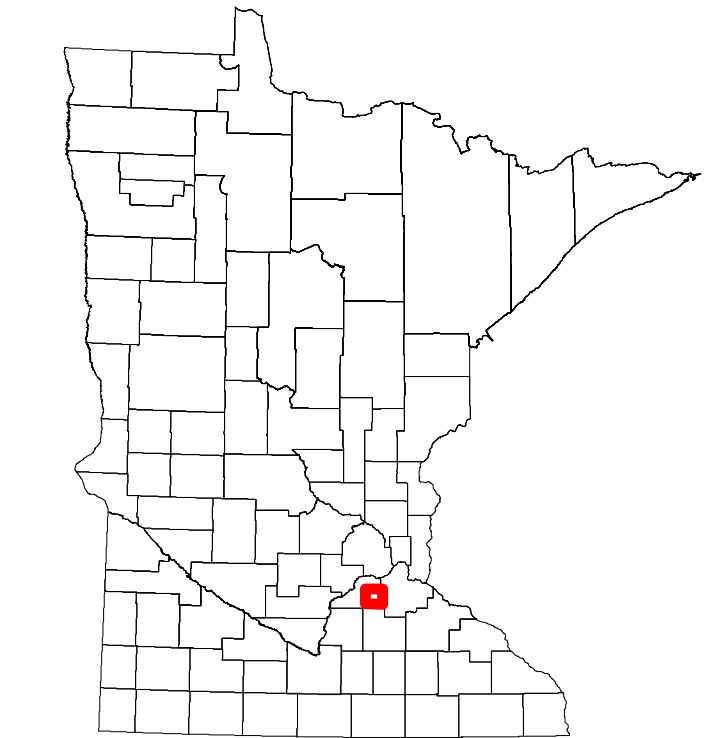
Projection:
Transverse Mercator
NAD 1986
UTM Zone 15



North American Datum
of 1986



ROAD AND ROADWAY FEATURES	PUBLIC SERVICE FEATURES
INTERSTATE	INDOT OFFICE
US HIGHWAY	INDOT TRUCK STATION
MN HIGHWAY	HIGHWAY PATROL DISTRICT OFFICE
COUNTY STATE AID HIGHWAY	STATE TRAVEL INFORMATION CENTER
COUNTY ROAD	REST AREA (Full Service)
MUNICIPAL STATE AID STREET	REST AREA (Vault Toilet)
MUNICIPAL STREET	WAYSIDE (Vault or Pit Toilet)
PRIVATE STREET/ROAD	LOCAL PARK
TOWNSHIP ROAD	PUBLIC ACCESS POINT
UNORGANIZED TERRITORY ROAD	FAIRGROUNDS
RAMP OR CONNECTOR	PORT OF ENTRY
INTERSTATE EXIT	PARK AND RIDE LOT
GREAT RIVER ROAD	MN STATE COLLEGE AND UNIVERSITY SYSTEM (MNSCU)
OTHER ROADS	UNIVERSITY OF MN SYSTEM
<ul style="list-style-type: none"> Farmhouse Shed Boys Service Munitor National Forest National Monument National Park National Wildlife Refuge State Forest National Wildlife Refuge State Game Preserve 	<ul style="list-style-type: none"> STATE HISTORICAL MARKER HISTORIC DISTRICT HISTORIC SITE MONUMENT
<ul style="list-style-type: none"> COMMERCIAL AIRPORT GENERAL AIRPORT AIRSTRIP SEAPLANE AIRPORT RUNWAY 	<ul style="list-style-type: none"> TRIBAL LAND COUNTY MUNICIPALITY ADJACENT MUNICIPALITY FEDERAL ADJUSTED URBAN AREA (2014) MILITARY VOYAGEURS NATIONAL PARK BOUNDARY WATERS CANOE AREA WILDERNESS STATE PARK REGIONAL PARK NATIONAL FOREST NATIONAL AND STATE FOREST STATE FOREST NATIONAL TRAIL WILDLIFE REFUGE AREA WILDLIFE MANAGEMENT AREA RIVER OR STREAM (Perennial) LAKE, POND OR RESERVOIR STREAM (Intermittent) DRAINAGE DITCH WETLAND ISLAND OR LAND REGIONAL WATERSHED
<ul style="list-style-type: none"> RAILWAY EMPIRE BUILDER STATION (Arctic) NORTHSTAR STATION (Commuter) LIGHT RAIL BLUE LINE GREEN LINE LONG BRIDGE (300' or Greater Span) MAJOR BRIDGE (20' to 300' Span) MINOR BRIDGE (5' to 20' Span) DAM LOCK AND DAM 	<ul style="list-style-type: none"> CITY CENTERS TRIBAL GOVERNMENT CENTER CITY CENTER LOCALLY KNOWN PLACE UNINCORPORATED COMMUNITY



To request information from this document in an alternative format, call 651-366-4718 or 1-800-657-3774 (Greater Minnesota); 711 or 1-800-627-3529 (Minnesota Relay). You may also send an e-mail to ADRequest.dot@state.mn.us. (Please request at least one week in advance.)