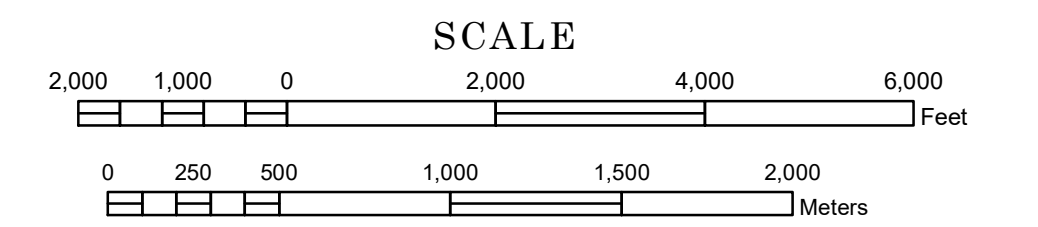


STREET SERIES MINNEAPOLIS- SAINT PAUL

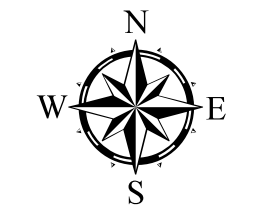
PREPARED BY THE
MINNESOTA DEPARTMENT OF TRANSPORTATION
OFFICE OF TRANSPORTATION SYSTEM MANAGEMENT

IN COOPERATION WITH
U.S. DEPARTMENT OF TRANSPORTATION
FEDERAL HIGHWAY ADMINISTRATION



1 in = 1,840 ft

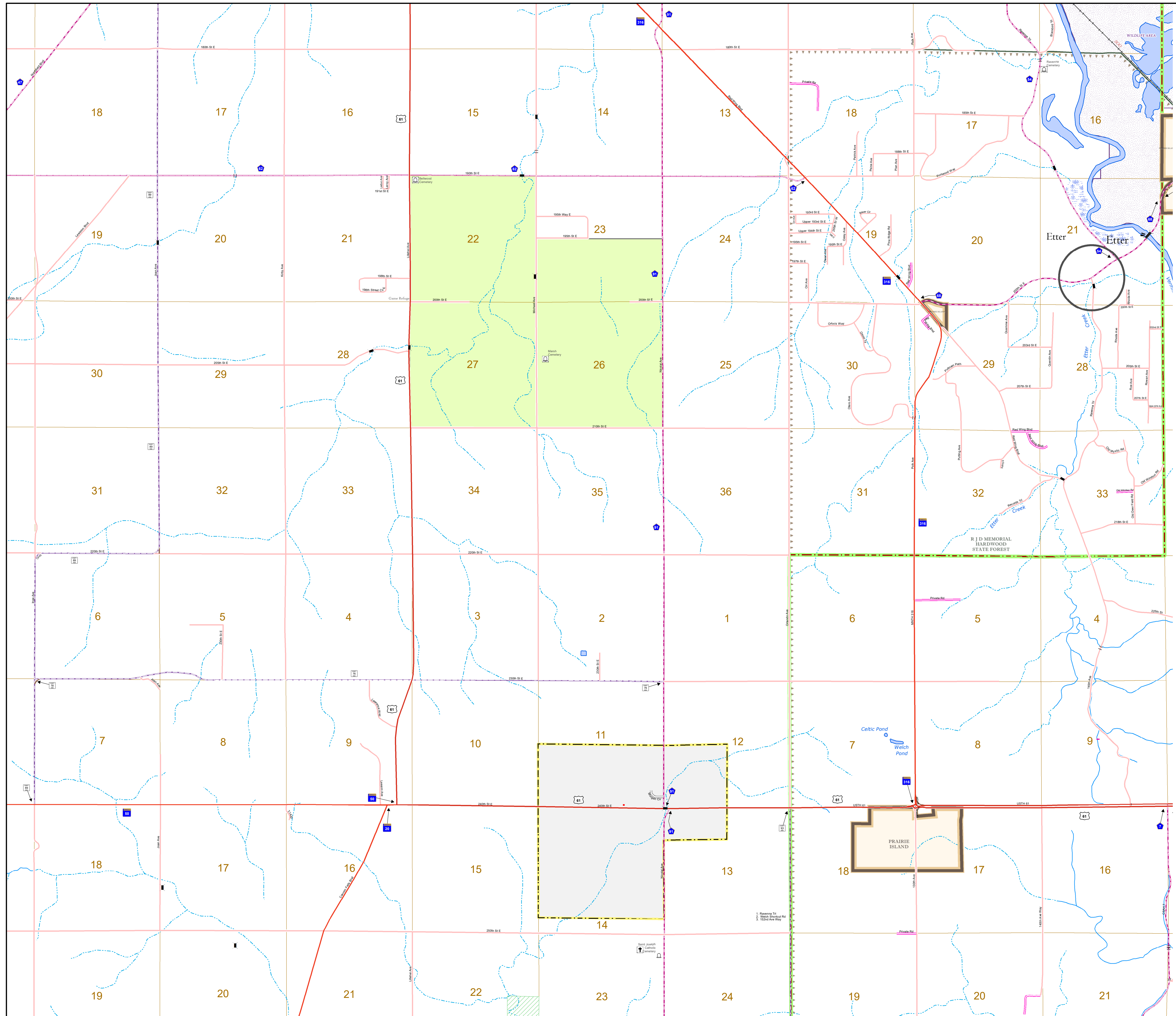
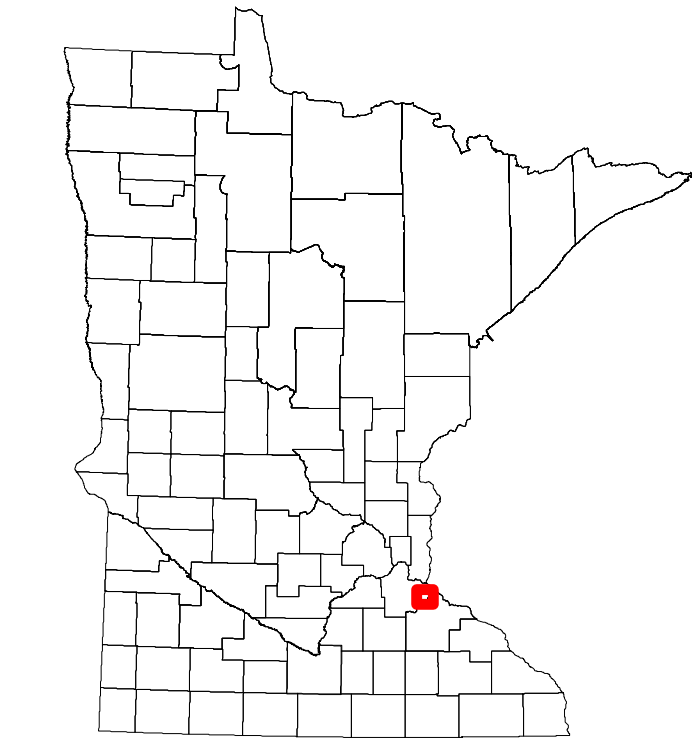
2024



Projection:
Transverse Mercator
NAD 1986
UTM Zone 15

North American Datum
of 1986

| | | | |
|--------------------------------------|--|--|--|
| ROAD AND ROADWAY FEATURES | | PUBLIC SERVICE FEATURES | |
| INTERSTATE | | MINDOT OFFICE | |
| US HIGHWAY | | MINDOT TRUCK STATION | |
| MN HIGHWAY | | HIGHWAY PATROL DISTRICT OFFICE | |
| COUNTY STATE AID HIGHWAY | | STATE TRAVEL INFORMATION CENTER | |
| COUNTY ROAD | | REST AREA (Full Service) | |
| MUNICIPAL STATE AID STREET | | REST AREA (Vault Toilet) | |
| MUNICIPAL STREET | | WAYSIDE (Vault or Pit Toilet) | |
| PRIVATE STREET/ROAD | | LOCAL PARK | |
| TOWNSHIP ROAD | | PUBLIC ACCESS POINT | |
| UNORGANIZED TERRITORY ROAD | | FAIRGROUNDS | |
| RAMP OR CONNECTOR | | PORT OF ENTRY | |
| INTERSTATE EXIT | | PARK AND RIDE LOT | |
| GREAT RIVER ROAD | | MN STATE COLLEGE AND UNIVERSITY SYSTEM (MNSCU) | |
| OTHER ROADS | | UNIVERSITY OF MN SYSTEM | |
| Farmhouse | | CULTURAL FEATURES | |
| State Park | | STATE HISTORICAL MARKER | |
| Nature Service | | HISTORIC DISTRICT | |
| Nature Park | | HISTORIC SITE | |
| Nature Preserve | | MONUMENT | |
| Military | | BOUNDARY FEATURES | |
| AVIATION FEATURES | | TRIBAL LAND | |
| COMMERCIAL AIRPORT | | COUNTY | |
| GENERAL AIRPORT | | MUNICIPALITY | |
| AIRSTRIP | | ADJACENT MUNICIPALITY | |
| SEAPLANE | | FEDERAL ADJUSTED URBAN AREA (2014) | |
| AIRPORT RUNWAY | | MILITARY | |
| RAILROAD AND RAILWAY FEATURES | | VOYAGEURS NATIONAL PARK | |
| RAILWAY | | BOUNDARY WATERS CANOE AREA WILDERNESS | |
| EMPIRE BUILDER STATION (Active) | | STATE PARK | |
| NORTHSTAR STATION (Construction) | | REGIONAL PARK | |
| LIGHT RAIL | | NATIONAL FOREST | |
| BLUE LINE | | NATIONAL AND STATE FOREST | |
| GREEN LINE | | STATE FOREST | |
| INFRASTRUCTURE FEATURES | | NATIONAL TRAIL | |
| LONG BRIDGE (300' or Greater Span) | | WILDLIFE REFUGE AREA | |
| MAJOR BRIDGE (20' to 300' Span) | | WILDLIFE MANAGEMENT AREA | |
| MINOR BRIDGE (5' to 20' Span) | | HYDROLOGIC FEATURES | |
| LOCK AND DAM | | RIVER OR STREAM (Perennial) | |
| PUBLIC FACILITIES | | LAKE, POND OR RESERVOIR | |
| STATE CAPITOL | | STREAM (Intermittent) | |
| FEDERAL COURTHOUSE | | DRAINAGE DITCH | |
| COUNTY COURTHOUSE | | WETLAND | |
| ARMORY | | ISLAND OR LAND | |
| CITY CENTERS | | REGIONAL WATERSHED | |
| TRIBAL GOVERNMENT CENTER | | | |
| CITY CENTER | | | |
| LOCALLY KNOWN PLACE | | | |
| UNINCORPORATED COMMUNITY | | | |



To request information from this document in an alternative format, call 651-366-4718 or 1-800-657-3774 (Greater Minnesota), 711 or 1-800-627-3529 (Minnesota Relay). You may also send an e-mail to ADRequest.dot@state.mn.us. (Please request at least one week in advance.)