

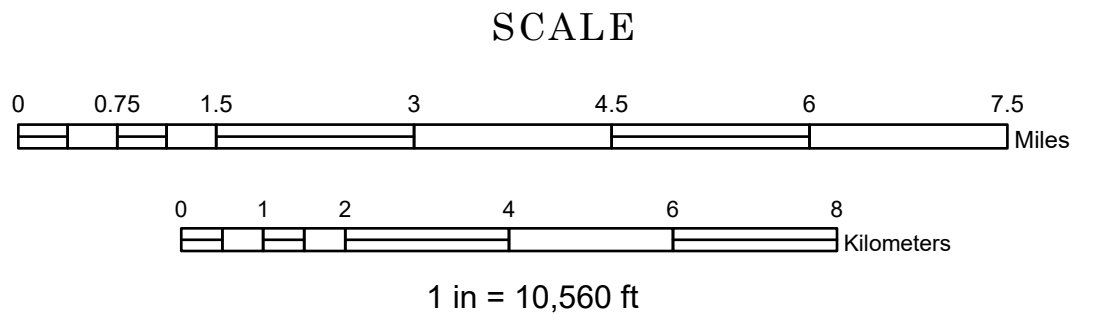
S O U T H D A K O T A



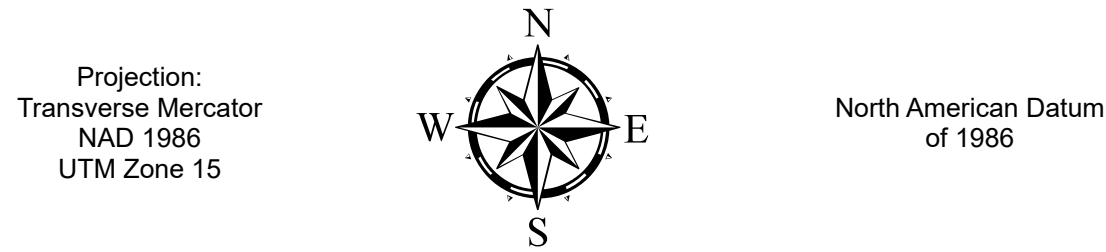
FUNCTIONAL  
CLASSIFICATION MAP  
YELLOW MEDICINE  
COUNTY  
MINNESOTA

PREPARED BY THE  
MINNESOTA DEPARTMENT OF TRANSPORTATION  
OFFICE OF TRANSPORTATION SYSTEM MANAGEMENT

IN COOPERATION WITH  
U.S. DEPARTMENT OF TRANSPORTATION  
FEDERAL HIGHWAY ADMINISTRATION



DECEMBER 2024



ROAD AND ROADWAY FEATURES

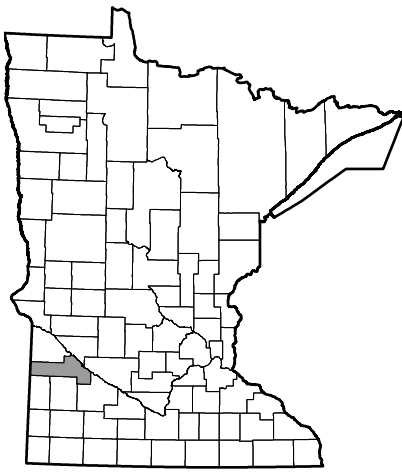
- Interstate
- Other Freeway or Expressway
- Principal Arterial - Other
- Minor Arterial
- Major Collector
- Minor Collector
- Local
- Railway
- Interstate
- US Highway
- MN Highway
- County State Aid Highway
- County Road

Arrows near road shields indicate the start and end points of routes.

BOUNDARY FEATURES

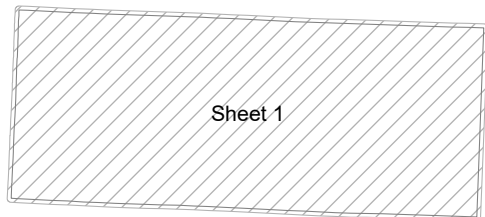
- State of Minnesota
- County
- Civil Township

Outline Map of Minnesota showing location of the County within the state.



Outline Map of the County.

Area of this County 763.54 Sq. Miles  
Land Area 759.1 Sq. Miles  
2020 Total County Population 9,528

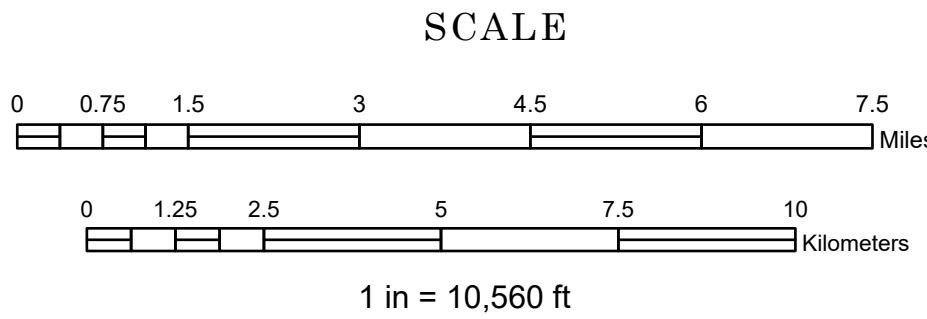




FUNCTIONAL  
CLASSIFICATION MAP  
YELLOW MEDICINE COUNTY  
MINNESOTA

PREPARED BY THE  
MINNESOTA DEPARTMENT OF TRANSPORTATION  
OFFICE OF TRANSPORTATION SYSTEM MANAGEMENT

IN COOPERATION WITH  
U.S. DEPARTMENT OF TRANSPORTATION  
FEDERAL HIGHWAY ADMINISTRATION



DECEMBER 2024

Projection:  
Transverse Mercator  
NAD 1986  
UTM Zone 15



North American Datum  
of 1986

ROAD AND ROADWAY FEATURES

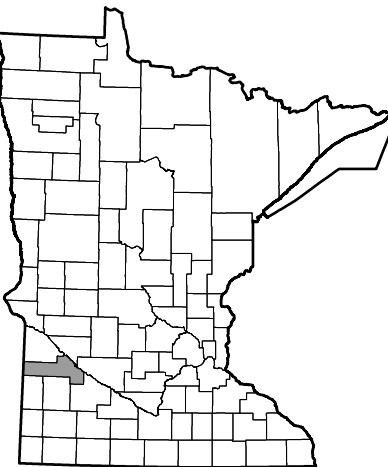
- Interstate
- Other Freeway or Expressway
- Principal Arterial - Other
- Minor Arterial
- Major Collector
- Minor Collector
- Local
- Railway
- Interstate
- US Highway
- MN Highway
- County State Aid Highway
- County Road

Arrows near road shields indicate the start and end points of routes.

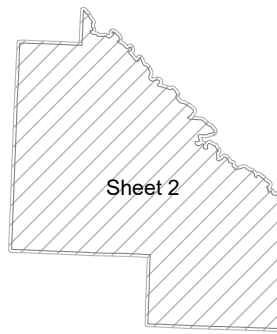
BOUNDARY FEATURES

- State of Minnesota
- County
- Civil Township

Outline Map of Minnesota showing  
location of the County within the state.



Outline Map of the County.  
Area of this County 763.54 Sq. Miles  
Land Area 759.1 Sq. Miles  
2020 Total County Population 9,528



SHEET 2 OF 2