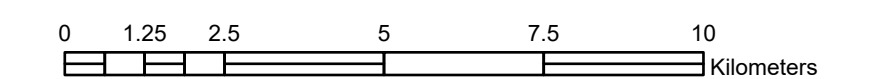


FUNCTIONAL CLASSIFICATION MAP LYON COUNTY MINNESOTA

PREPARED BY THE
MINNESOTA DEPARTMENT OF TRANSPORTATION
OFFICE OF TRANSPORTATION SYSTEM MANAGEMENT
IN COOPERATION WITH
U.S. DEPARTMENT OF TRANSPORTATION
FEDERAL HIGHWAY ADMINISTRATION

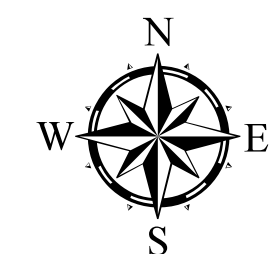
SCALE



1 in = 10,560 ft

DECEMBER 2024

Projection:
Transverse Mercator
NAD 1986
UTM Zone 15



North American Datum
of 1986

ROAD AND ROADWAY FEATURES

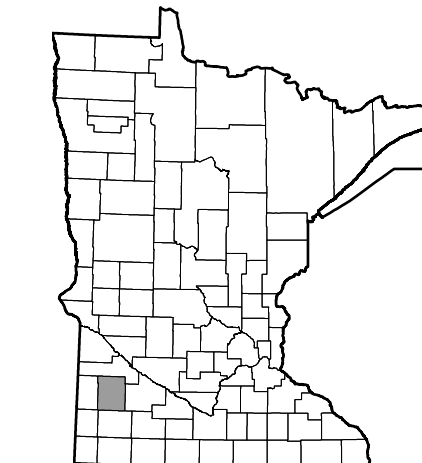
- Interstate
- Other Freeway or Expressway
- Principal Arterial - Other
- Minor Arterial
- Major Collector
- Minor Collector
- Local
- Railway
- Interstate
- US Highway
- MN Highway
- County State Aid Highway
- County Road

Arrows near road shields indicate the start and end points of routes.

BOUNDARY FEATURES

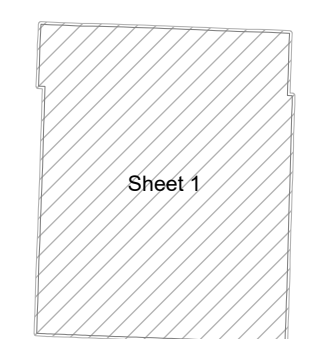
- State of Minnesota
- County
- Civil Township

Outline Map of Minnesota showing location of the County within the state.

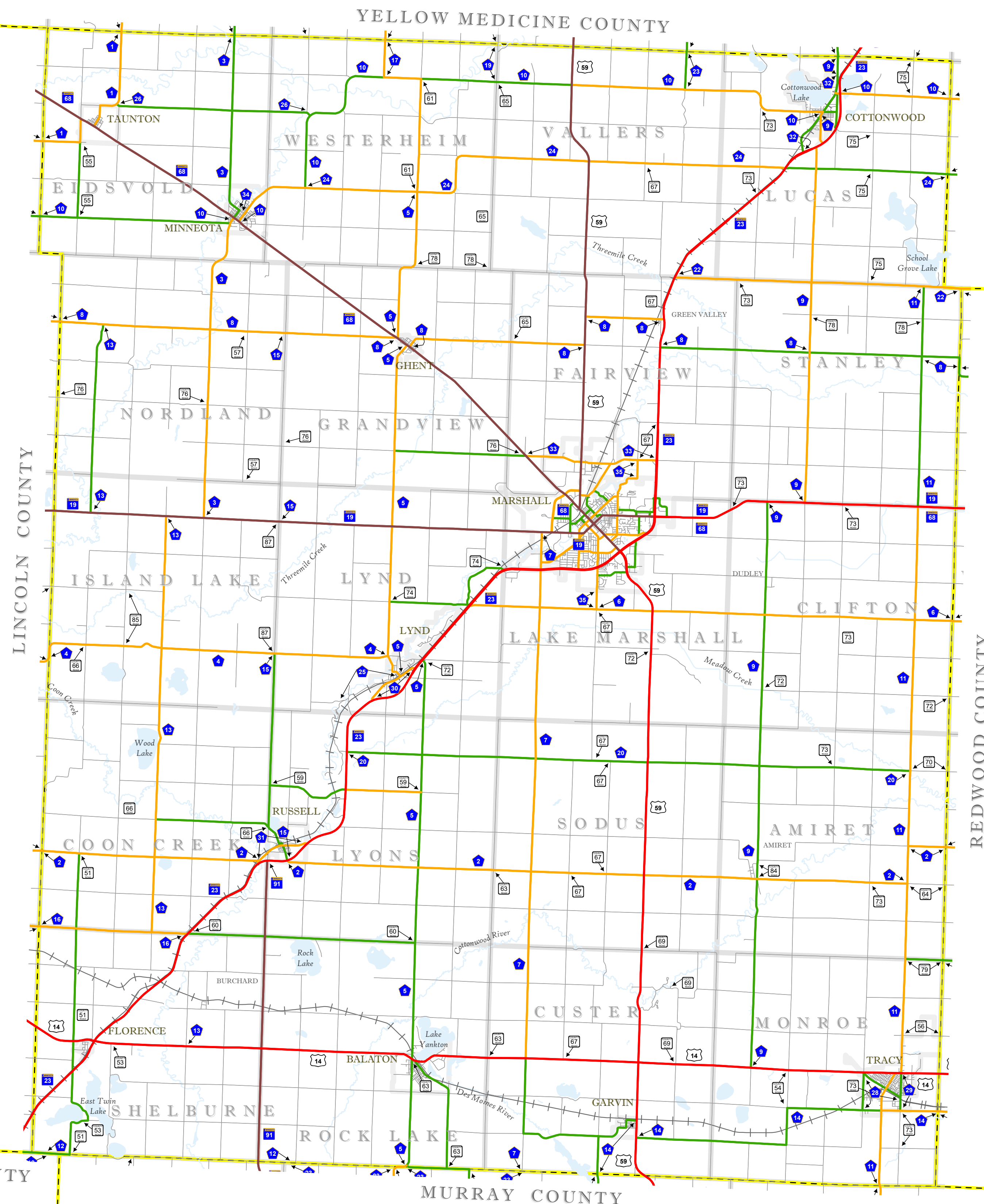


Outline Map of the County.

Area of this County 722.01 Sq. Miles
Land Area 714.56 Sq. Miles
2020 Total County Population 25,269



SHEET 1 OF 1



To request information from this document in an alternative format, call 651-366-4718 or 1-800-657-3774 (Greater Minnesota); 711 or 1-800-627-3529 (Minnesota Relay). You may also send an e-mail to ADRequest.dot@state.mn.us. (Please request at least one week in advance.)