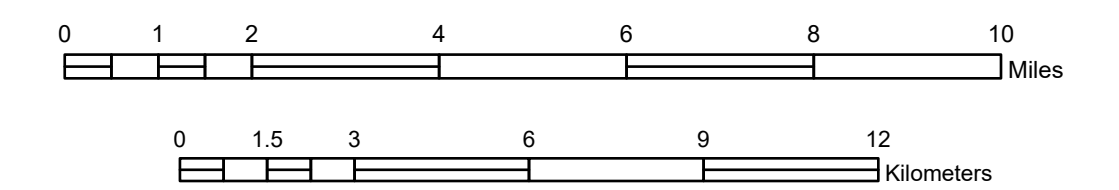


FUNCTIONAL CLASSIFICATION MAP HUBBARD COUNTY MINNESOTA

PREPARED BY THE
MINNESOTA DEPARTMENT OF TRANSPORTATION
OFFICE OF TRANSPORTATION SYSTEM MANAGEMENT

IN COOPERATION WITH
U.S. DEPARTMENT OF TRANSPORTATION
FEDERAL HIGHWAY ADMINISTRATION

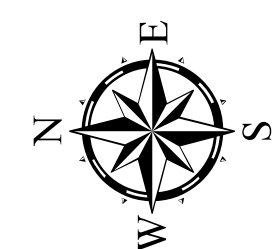
SCALE



1 in = 10,560 ft

DECEMBER 2024

Projection:
Transverse Mercator
NAD 1986
UTM Zone 15



North American Datum
of 1986

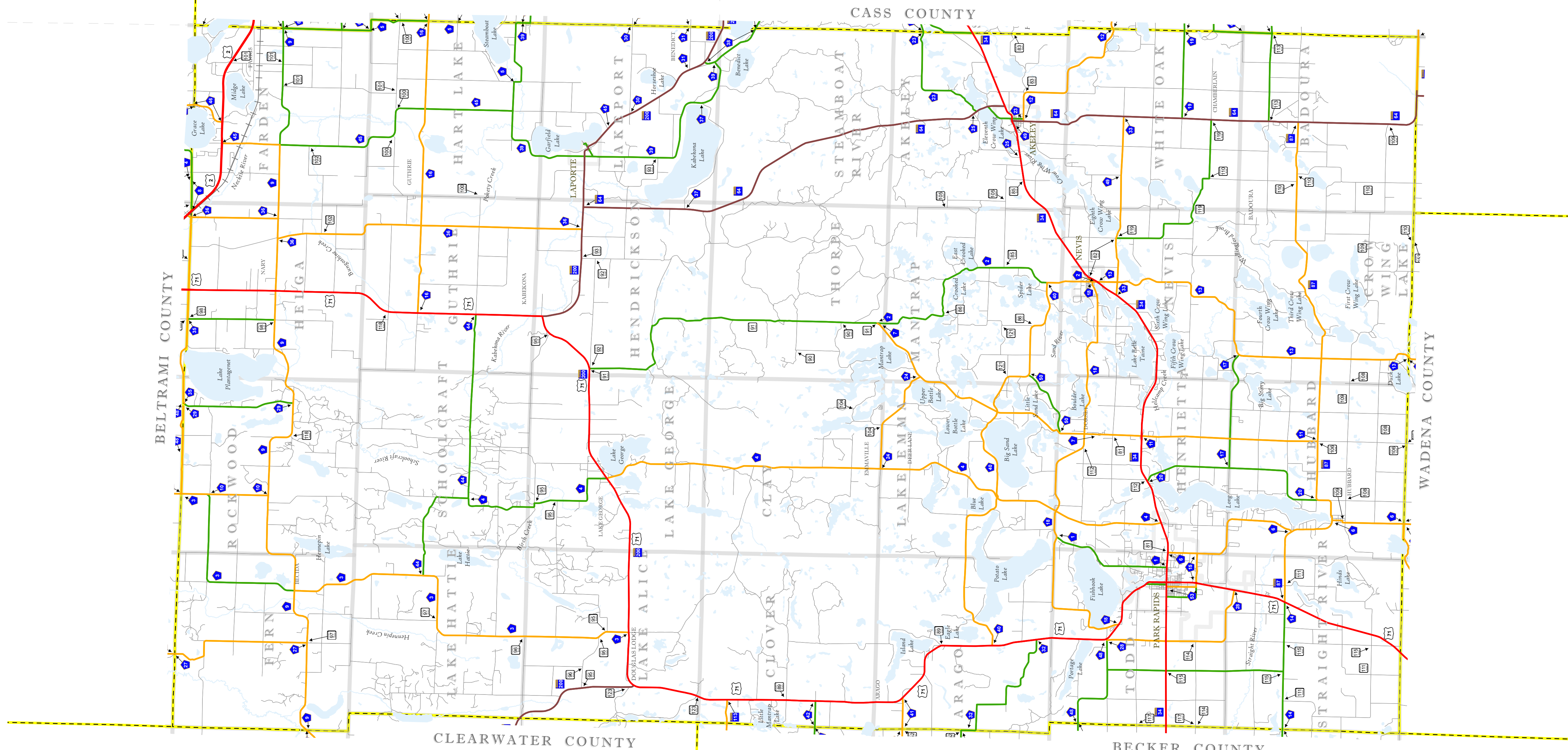
ROAD AND ROADWAY FEATURES

- Interstate
- Other Freeway or Expressway
- Principal Arterial - Other
- Minor Arterial
- Major Collector
- Minor Collector
- Local
- Railway
- Interstate
- US Highway
- MN Highway
- County State Aid Highway
- County Road

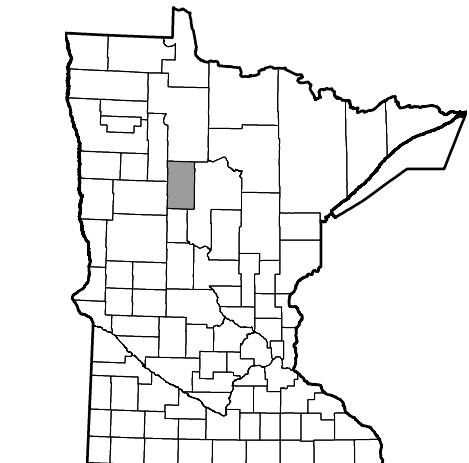
Arrows near road shields indicate the start and end points of routes.

BOUNDARY FEATURES

- State of Minnesota
- County
- Civil Township

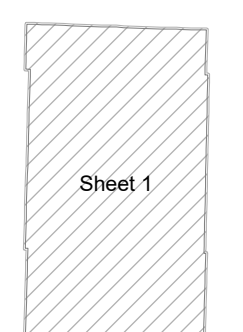


Outline Map of Minnesota showing location of the County within the state.



Outline Map of the County.

Area of this County 999.29 Sq. Miles
Land Area 925.68 Sq. Miles
2020 Total County Population 21,344



SHEET 1 OF 1