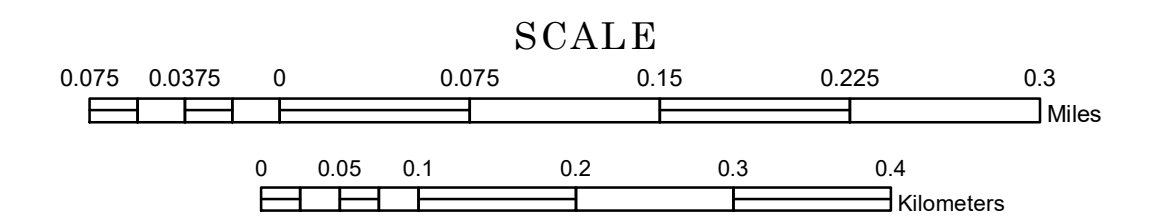


# MUNICIPALITY OF SEAFORTH

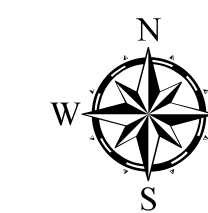
PREPARED BY THE  
MINNESOTA DEPARTMENT OF TRANSPORTATION  
OFFICE OF TRANSPORTATION SYSTEM MANAGEMENT

IN COOPERATION WITH  
U.S. DEPARTMENT OF TRANSPORTATION  
FEDERAL HIGHWAY ADMINISTRATION



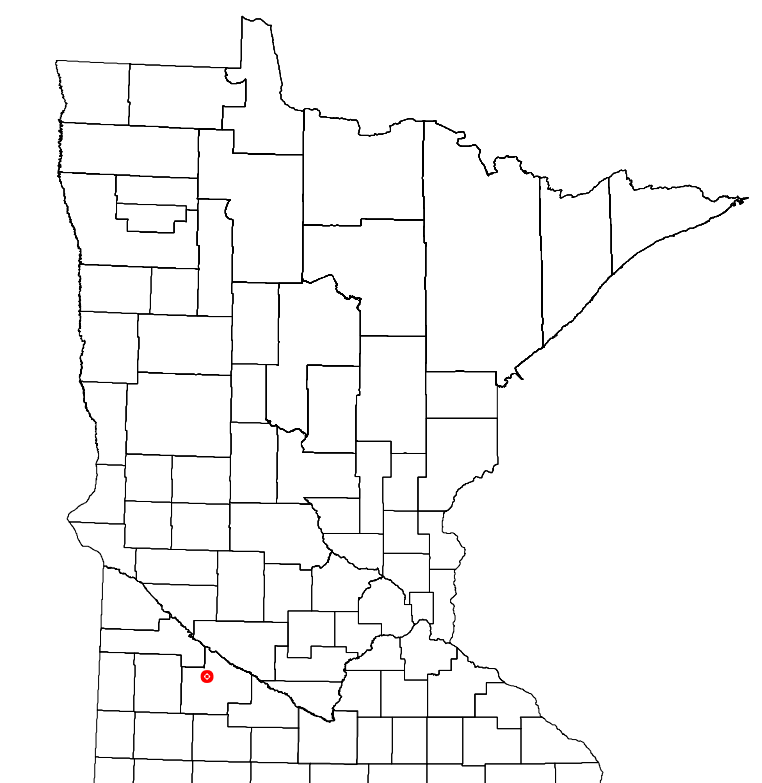
2024

Projection:  
Transverse Mercator  
NAD 1986  
UTM Zone 15

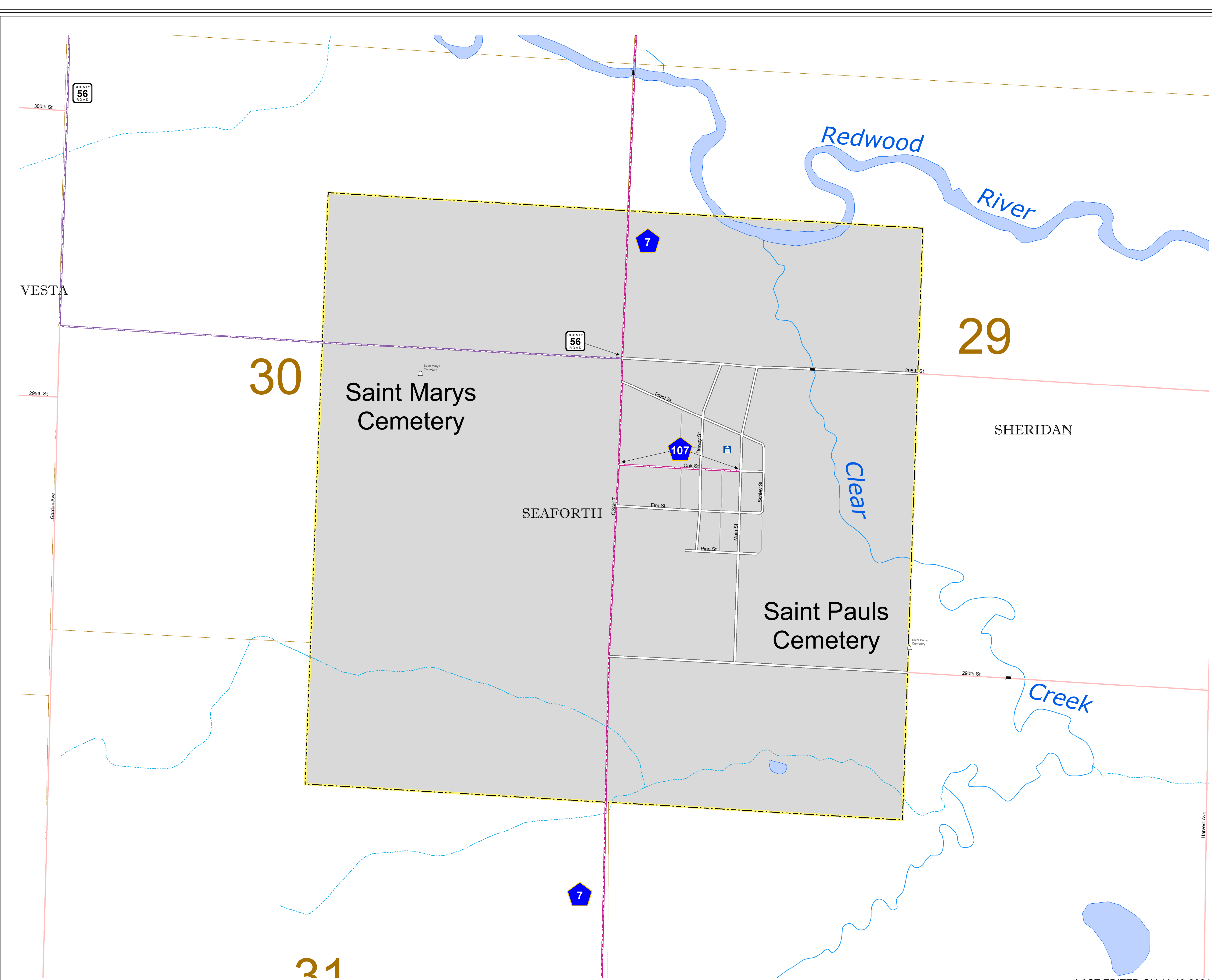


North American Datum  
of 1986

ROAD AND ROADWAY FEATURES	PUBLIC SERVICE FEATURES
INTERSTATE	MINOT OFFICE
US HIGHWAY	MINOT TRUCK STATION
MIN HIGHWAY	HIGHWAY PATROL DISTRICT OFFICE
COUNTY STATE AID HIGHWAY	STATE TRAVEL INFORMATION CENTER
COUNTY ROAD	REST AREA (Full Service)
MUNICIPAL STREET	REST AREA (Quick Turn)
MUNICIPAL STATE AID STREET	WAYSIDE (Only on Pk/Tor)
TOWNSHIP ROAD	PUBLIC ACCESS POINT
UNORGANIZED TERRITORY ROAD	FAIRGROUNDS
RAMP OR CONNECTOR	PORT OF ENTRY
INTERSTATE EXIT	PARK AND RIDE LOT
GREAT RIVER ROAD	PUBLIC UNIVERSITY/COLLEGE
OTHER ROADS	PRIVATE UNIVERSITY/COLLEGE
FARMROAD	ELEMENTARY SCHOOL
STATE PARK	MIDDLE SCHOOL
NATIONAL PARK	HIGH SCHOOL
NATIONAL MONUMENT	AVIATION FEATURES
NATIONAL WILDLIFE STATE GAME	COMMERCIAL AIRPORT
RAILROAD AND RAILWAY FEATURES	GENERAL AIRPORT
EMPIRE BUILDER STATION (ARTIKS)	AIRSTRIP
NORTHSTAR STATION (COMMENTS)	SEAPLANE
LIGHT RAIL	AIRPORT RUNWAY
BLUE LINE STATION	CULTURAL FEATURES
GREEN LINE STATION	STATE HISTORIC MARKER
INFRASTRUCTURE FEATURES	HISTORIC DISTRICT
LONG BRIDGE (100' OR GREATER SPAN)	HISTORIC SITE
MAJOR BRIDGE (20' TO 100' SPAN)	MONUMENT
MINOR BRIDGE (< 20' SPAN)	CEMETERY
ROAD TUNNEL (100' OR GREATER SPAN)	TRIBAL LAND
RAILROAD BRIDGE (100' OR GREATER SPAN)	COUNTY
RAILROAD BRIDGE (LESSER 100' SPAN)	MUNICIPALITY
SKYWAY	ADJACENT MUNICIPALITY
PEDESTRIAN BRIDGE	FEDERAL ADJUSTED URBAN AREA (2014)
PEDESTRIAN TUNNEL	PUBLIC FACILITIES
DAM	STATE CAPITOL
LOCK AND DAM	FEDERAL COURTHOUSE
STATE CAPITOL	COUNTY COURTHOUSE
FEDERAL COURTHOUSE	ARMORY
COUNTY COURTHOUSE	CITY HALL
REGIONAL PARK	TOWN HALL
MILITARY	COMMUNITY CENTER
STATE PARK	ARENA
NATIONAL FOREST	STADIUM
NATIONAL AND STATE FOREST	POST OFFICE
STATE FOREST	FIRE STATION
NATIONAL TRAIL	PUBLIC LIBRARY
WILDLIFE REFUGE AREA	PUBLIC MUSEUM
WILDLIFE MANAGEMENT AREA	EVENT CENTER
HYDROLOGIC FEATURES	CITY CENTERS
RIVER OR STREAM (PERMANENT)	TRIBAL GOVERNMENT CENTER
LAKE, POND OR RESERVOIR	CITY CENTER
STREAM (PERMANENT)	LOCALLY INCORPORATED PLACE
DRAINAGE DITCH	UNINCORPORATED COMMUNITY
WETLAND	
ISLAND OR LAND	
REGIONAL WATERSHED	



Population (U.S. Census 2020): 82



LAST EDITED ON 11-19-2024

To request information from this document in an alternative format, call 651-366-4718 or 1-800-657-3774 (Greater Minnesota); 711 or 1-800-627-3529 (Minnesota Relay). You may also send an e-mail to ADarequest.dot@state.mn.us. (Please request at least one week in advance.)