

# MUNICIPALITY OF HIBBING

PREPARED BY THE  
MINNESOTA DEPARTMENT OF TRANSPORTATION  
OFFICE OF TRANSPORTATION SYSTEM MANAGEMENT

IN COOPERATION WITH  
U.S. DEPARTMENT OF TRANSPORTATION  
FEDERAL HIGHWAY ADMINISTRATION

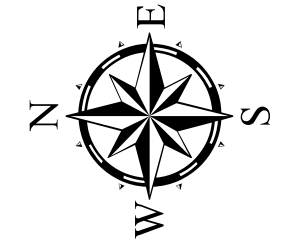
SCALE



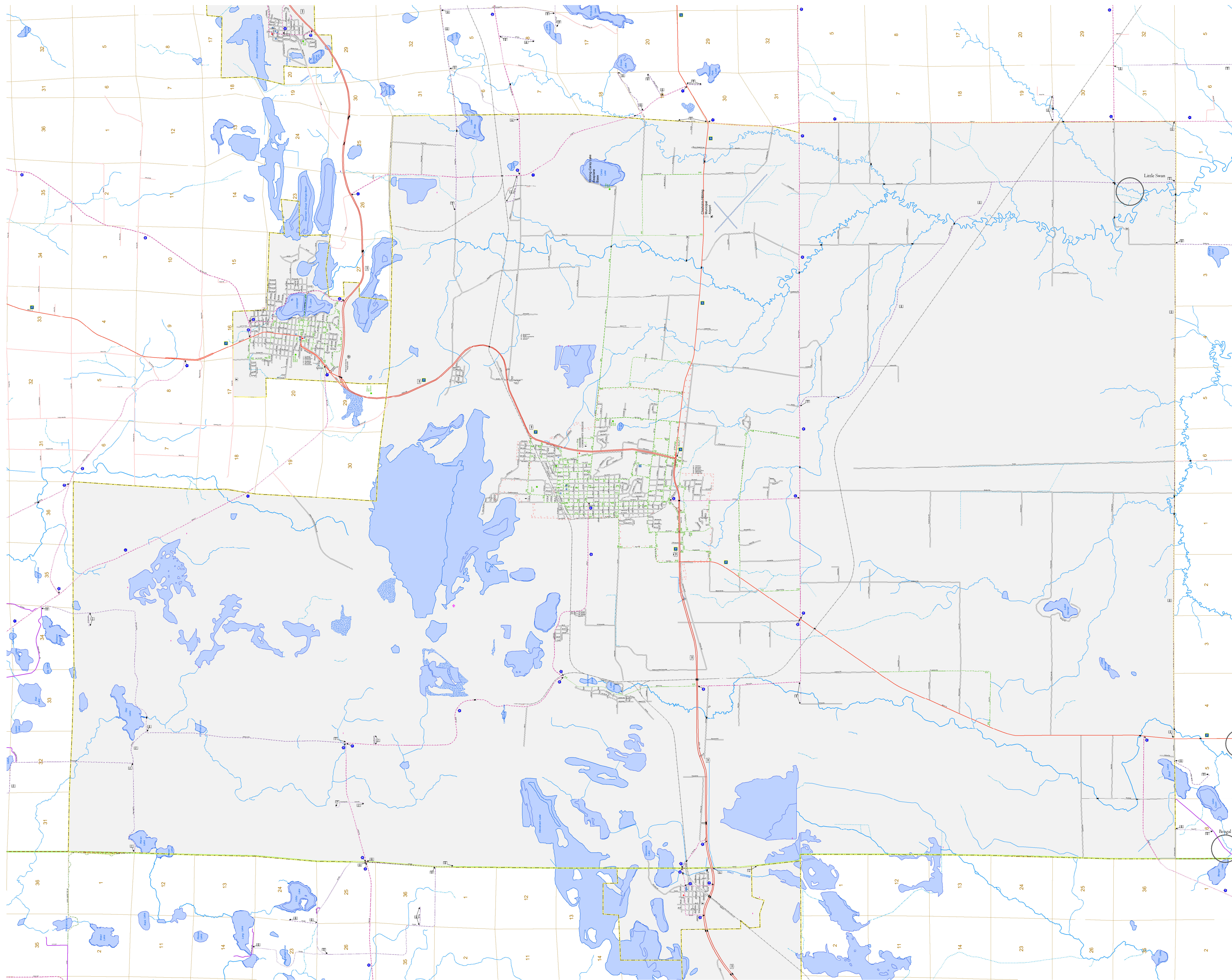
1 in = 4,000 ft

**2019**

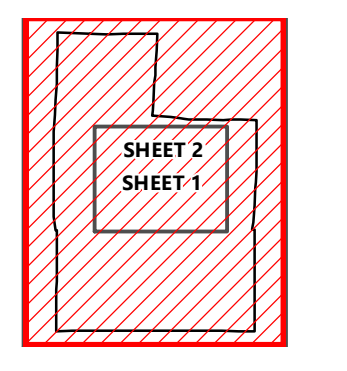
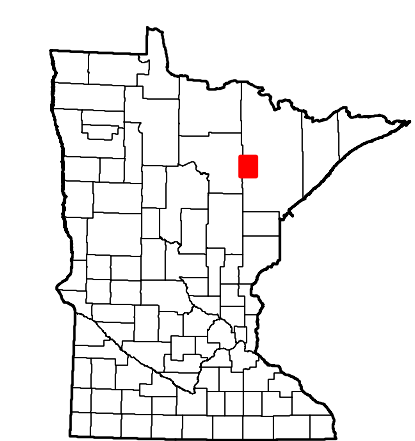
Projection:  
Transverse Mercator  
NAD 1986  
UTM Zone 15



North American Datum  
of 1986



ROAD AND ROADWAY FEATURES		PUBLIC SERVICE FEATURES	
INTERSTATE	INDOT OFFICE	INDOT TRUCK STATION	
US HIGHWAY	HIGHWAY PATROL DISTRICT OFFICE	STATE TRAVEL INFORMATION CENTER	
MN HIGHWAY	REST AREA (FULL SERVICE)	REST AREA (VAULT TOILET)	
COUNTY STATE AID HIGHWAY	WAYSIDE (VAULT OR PIT TOILET)	LOCAL PARK	
COUNTY ROAD	FAIRGROUNDS	PUBLIC ACCESS POINT	
MUNICIPAL STATE AID STREET	PORT OF ENTRY	PARK AND RIDE LOT	
MUNICIPAL STREET	INTERSTATE EXIT	MN STATE COLLEGE AND UNIVERSITY SYSTEM (MNSCU)	
PRIVATE STREET/ROAD	GREAT RIVER ROAD	UNIVERSITY OF MN SYSTEM	
TOWNSHIP ROAD	OTHER ROADS	STATE PARK	
UNORGANIZED TERRITORY ROAD	FRONTAGE	NATIONAL PARK	
RAMP OR CONNECTOR	MILITARY	NATIONAL MONUMENT	
INTERSTATE EXIT		STATE FOREST	
GREAT RIVER ROAD		NATIONAL WILDLIFE STATE GAME	
		AIRPORT FEATURES	
		COMMERCIAL AIRPORT	
		GENERAL AIRPORT	
		AIRSTRIP	
		SEAPLANE	
		AIRPORT RUNWAY	
		RAILROAD AND RAILWAY FEATURES	
		RAILWAY	
		EMPIRE BUILDER STATION (AMTRAK)	
		NORTHSTAR STATION (COMMUTER)	
		LIGHT RAIL	
		BLUE LINE	
		GREEN LINE	
		INFRASTRUCTURE FEATURES	
		LENS BRIDGE (80' OR GREATER SPAN)	
		MAJOR BRIDGE (25' TO 300' SPAN)	
		MINOR BRIDGE (8' TO 25' SPAN)	
		DAM	
		LOCK AND DAM	
		PUBLIC FACILITIES	
		STATE CAPITOL	
		FEDERAL COURTHOUSE	
		COUNTY COURTHOUSE	
		ARMORY	
		CITY CENTERS	
		TRIBAL GOVERNMENT CENTER	
		CITY CENTER	
		LOCALLY INCORPORATED PLACE	
		UNINCORPORATED COMMUNITY	
		CULTURAL FEATURES	
		STATE HISTORICAL MARKER	
		HISTORIC DISTRICT	
		HISTORIC SITE	
		MONUMENT	
		BOUNDARY FEATURES	
		TRIBAL LAND	
		COUNTY	
		MUNICIPALITY	
		ADJACENT MUNICIPALITY	
		FEDERAL ADJUSTED URBAN AREA (2014)	
		MILITARY	
		VOYAGEURS NATIONAL PARK	
		BOUNDARY WATERS CANOE AREA WILDERNESS	
		STATE PARK	
		REGIONAL PARK	
		NATIONAL FOREST	
		NATIONAL AND STATE FOREST	
		STATE FOREST	
		NATIONAL TRAIL	
		WILDLIFE REFUGUE AREA	
		WILDLIFE MANAGEMENT AREA	
		HYDROLOGIC FEATURES	
		RIVER OR STREAM (PERMANENT)	
		LAKE, POND OR RESERVOIR	
		STREAM (INTERMITTENT)	
		DRAINAGE DITCH	
		WETLAND	
		ISLAND OR LAND	
		REGIONAL WATERSHED	



To request information from this document in an alternative format, call 651-366-4718 or 1-800-657-3774 (Greater Minnesota); 711 or 1-800-627-3529 (Minnesota Relay). You may also send an e-mail to [ADArequest.dot@state.mn.us](mailto:ADArequest.dot@state.mn.us). (Please request at least one week in advance.)

Population (U.S. Census 2010): 16,361