



Maintenance Research Bulletin: January 2016

NTREC New Technology Research Equipment Committee
MOR Maintenance Operations Research

Office of Maintenance Research Technology Transfer

Mastic Lute Skid

Product Info
Cost (Estimated)
\$200

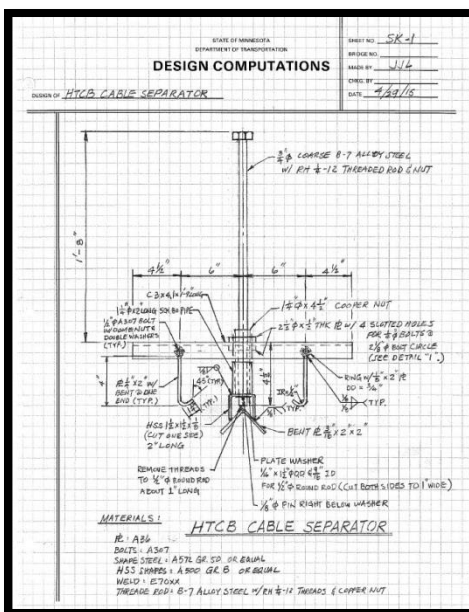
Key Features

- Reduces over-exertion
- Cleaner end product
- Easily attached/removed
- Very little cost to build
- Keeps your boots cleaner and in turn lasting longer.

Questions or Comments? Contact:
Steve Blaufuss
Technology Transfer Specialist
Steve.Blaufuss@dot.mn.us
651-216-9885
Or
Ryan Otte
MOR Program Manager
Ryan.Otte@dot.mn.us
651-366-3585

Description
This noteworthy device comes from District 7. It allows the operators the control to apply mastic on a long stretch of parallel cracks with minimal effort. The end result equals a cleaner finished product because it does not have to be after such as traditional hand-applied which can be hard to handle. The chute is compliant to the skid itself. The weight of the skid itself has enough down force onto the road surface to be adequate to create a nice smooth finish with very little run-off.

We all have a stake in A to B



Upcoming Events

First Annual 2016
National Road Research
Alliance Conference
(formerly TERRA)
St. Paul
February 18, 2016

Minnesota's
Transportation
Conference
St. Paul
March 9-10, 2016

Northland Chapter
ATSSA
"How To"
Ramada Plaza Suites
Fargo North Dakota
March 15-16, 2016

Maintenance Research
Website:
<http://www.dot.state.mn.us/maintenance/research.html>

Comments? Questions?
Maintenance Research
Program Administrator
651/366-3585
Ryan Otte

Technology Transfer Initiative

Maintenance Technology Transfer (T2) is an initiative to capture and share useful ideas throughout the state. These ideas typically incorporate small in-house built devices that are stand alone or used as attachments for existing pieces of equipment. These devices are built by personnel in the field that recognize the need for a more efficient and safer method of completing their work. The information gathered from those who were involved with its creation, is then entered into a format that is both user friendly and informative. Distribution of this information is intended to benefit all districts by allowing them the opportunity to adopt new ideas and reciprocate with their own ideas. This helps foster a maintenance culture focused on efficiency and safety. T2 one pagers can be found here; <http://www.dot.state.mn.us/maintenance/technologytransfer.html>

For more information contact:
Steve Blaufuss 651/216-9885
Technology Transfer Specialist CO

We all have a stake in A to B

