

MINNESOTA ARCHITECTURE-HISTORY INVENTORY FORM

Property Location			
Property Name:	Bridge L8503	Inventory No.	SL-DUL-2399
Address:	Seven Bridges Road over Amity Creek	County:	St. Louis
City/Twp:	Duluth	PIN	N/A
T-R-S:	T51N, R13W, Section 32	Quarters:	SE-NW-SE
USGS Quad	Duluth, Minnesota		
UTM Zone 15	N5189408	E575378	NAD 83

Property Information			
Arch/Eng:	Morell & Nichols	Style:	Concrete arch
Date Const:	c. 1912	Historic Context:	Urban Centers (1870-1940)
Historic Use:	Bridge	Present Use:	Bridge
Property Type:	Structure	Survey Name:	Skyline Parkway Cultural Resources Inventory
Prepared by:	William E. Stark, Stark Preservation Planning LLC	Survey Date:	May 2, 2011

Segment: Seven Bridges Road

Description:

This is the third of the bridges from Superior Street on Seven Bridges Road. It is among the collection of rustic, stone-faced bridges built c. 1912 based on the designs of Morell and Nichols. The reinforced concrete structure has a filled-spandrel, low-rise, barrel-arch with a main span length of 28.2 feet. Above the 21.5 foot wide deck are rustic stone parapets capped with stone coping. The bridge is veneered with rough-ashlar masonry, with a defined arch ring and delineated deck line. The stone veneer is carried across the face of the abutment beneath the springline of the arch. Pilasters define the springline and abutment points.

History:

This bridge has been determined eligible for the National Register.

Plans on file in the Morell and Nichols collection of the Northwest Architectural Archives suggest this may not be the original, or the intended bridge for this location. The plans for a bridge described as Number 3 on Snively Road is a distinct departure from the other similarly picturesque plans for the other series of bridges. The plan shows, instead, two 32-foot girders spans set on battered concrete piers faced with stone. Instead of the typical stone parapet railing, this plan specified pipe iron.

Integrity:

In a previous survey, historian Jeff Hess notes "... the coping atop the pilasters and end posts has been replaced with applied concrete. The south railing has been damaged and the northeast railing end has been replaced with cast-in-place concrete."

Since then, the bridge was substantially remodeled in 1996. This work restored the concrete railing with the original stone design, and appears to have included repointing and other masonry repairs.

References:

Mn/DOT Structure Inventory Report for Bridge L8503, 7 October 2009.

Morell and Nichols Collection of the Northwest Architectural Archives. Duluth files.

Nunnally, Patrick D.

1997 *Jewel of the North: Duluth's Parkway System – A Historic Landscape Evaluation Study*. Prepared for the Duluth Heritage Preservation Commission.

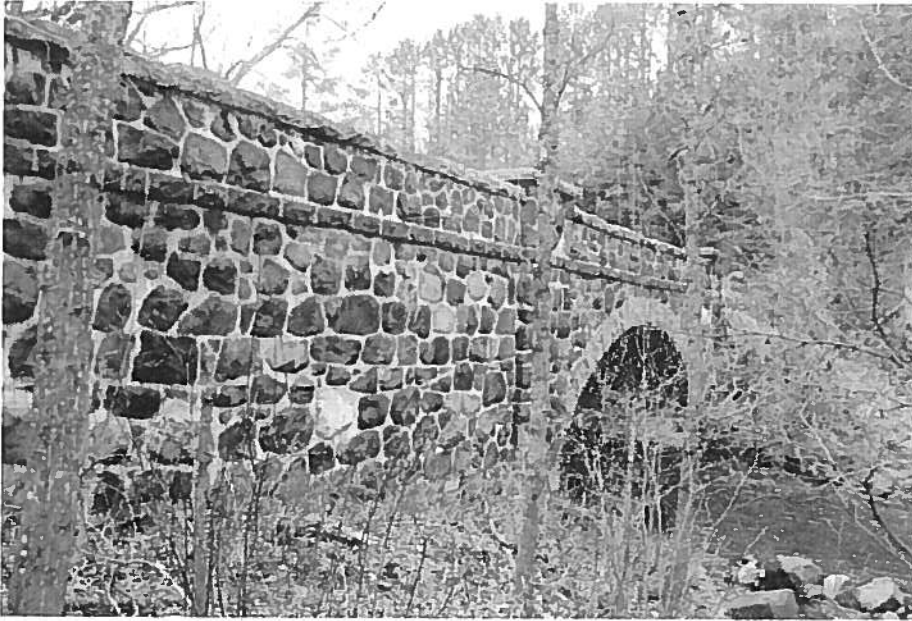
Statewide Bridge Inventory Form for Bridge L8503, SL-DUL-2399



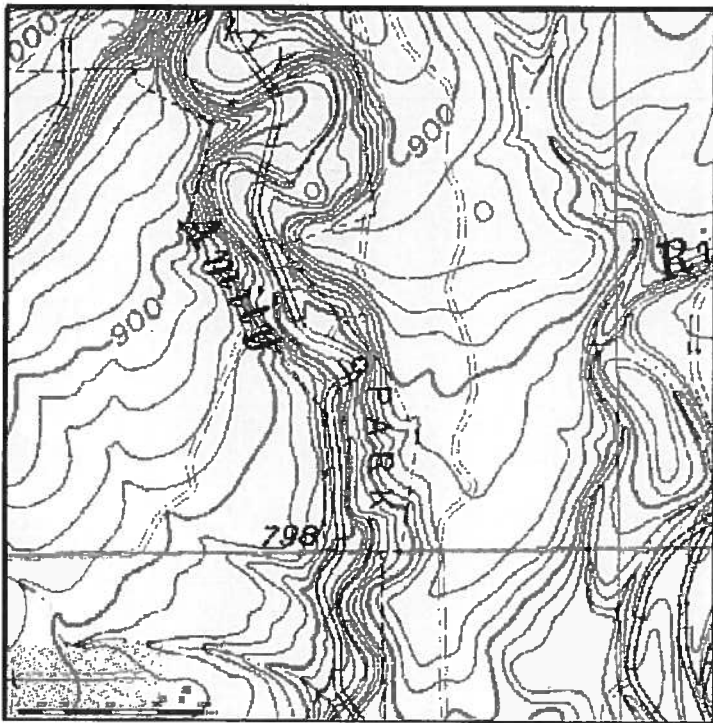
Facing SW



Facing W



Facing NE



Location