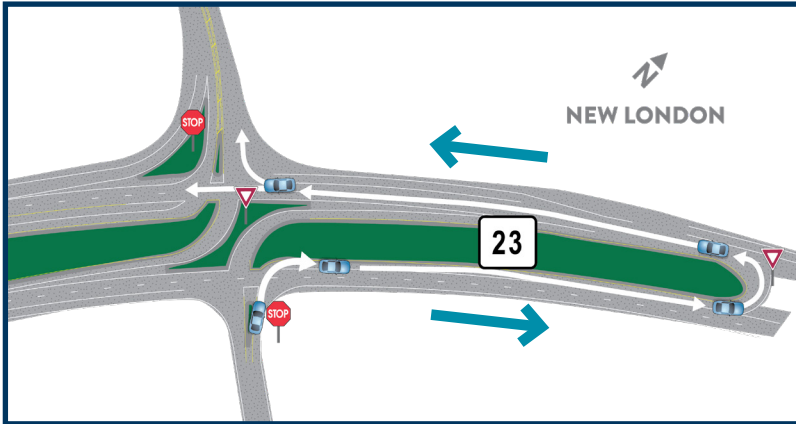
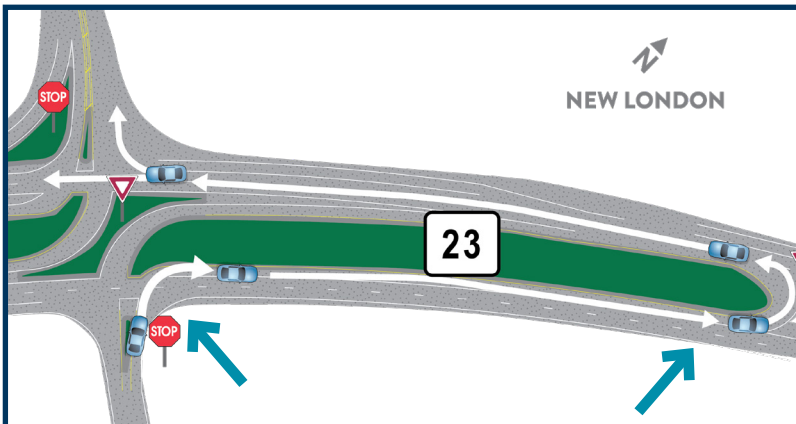


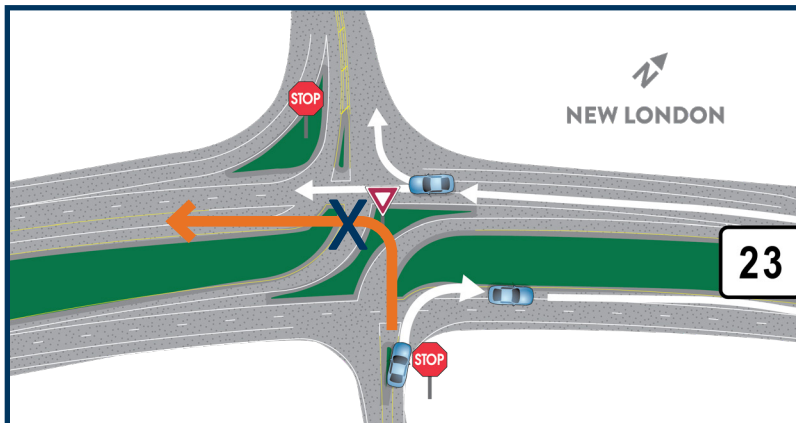
Driving a J-turn



With a J-turn, drivers only have to be concerned with one direction of traffic on the highway at a time.



Drivers don't have to wait for a gap in BOTH directions of traffic to cross the highway. Make a right, followed by a U-turn.



At a J-turn, drivers approaching a divided highway from a side street are not allowed to make left turns or cross traffic.

J-turns are a cost-effective solution to reduce serious and fatal crashes.