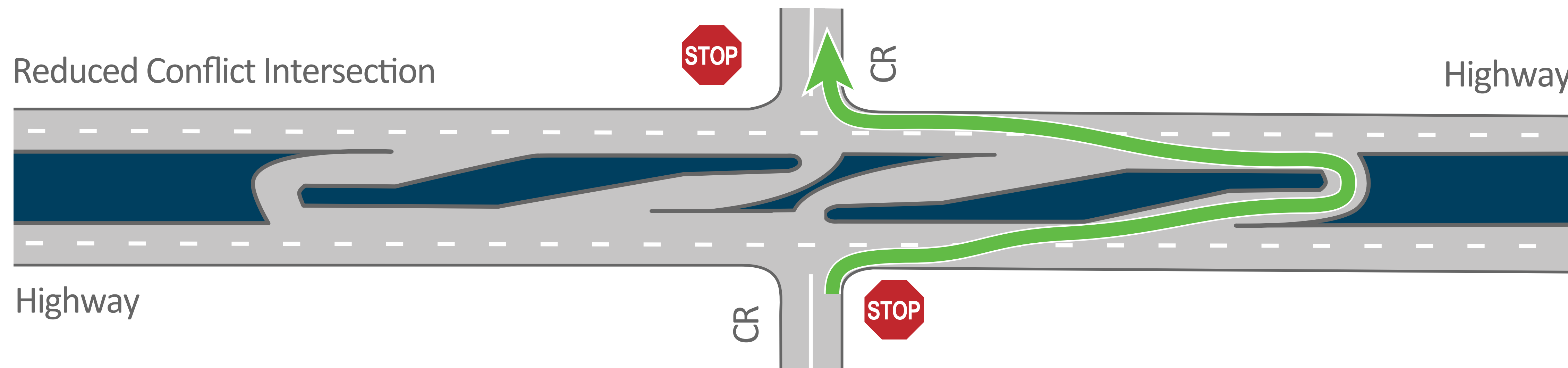
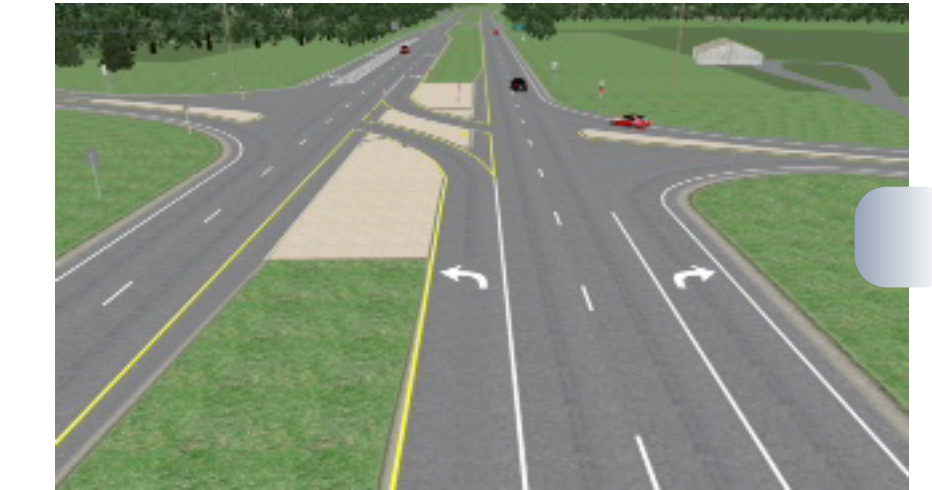
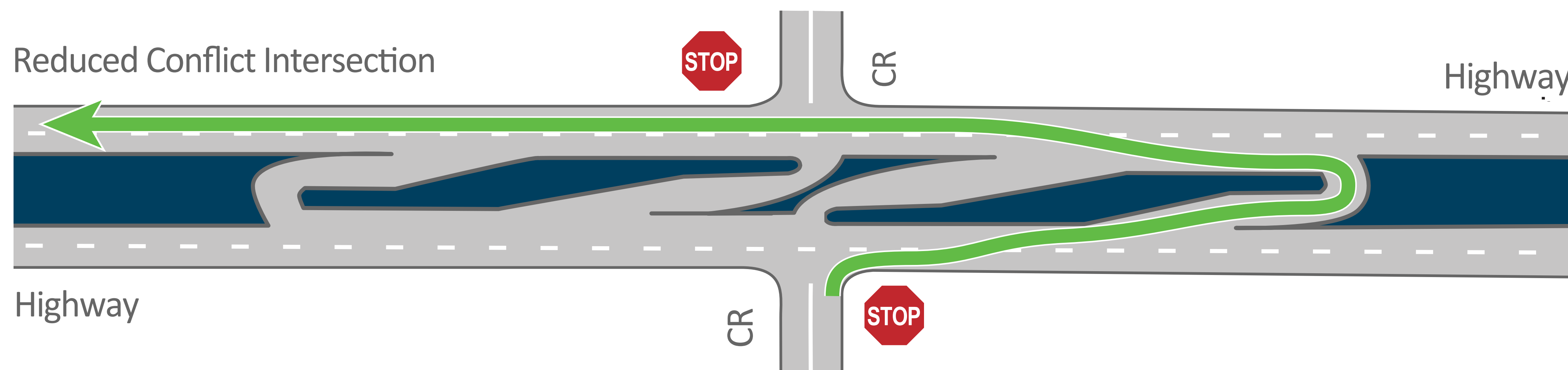


CROSSING a divided highway



LEFT HAND TURN onto a divided highway



About RCIs

Reduced Conflict Intersections (RCIs) are intersections that decrease fatalities and injuries caused by broadside crashes on four-lane divided highways. RCIs can also be known as RCUTs or J-Turns

Benefits of RCIs

Improved safety—Studies show a 70 percent reduction in fatalities and a 42 percent reduction in injury crashes where RCIs are used

Faster to build—RCIs can be designed and built in approximately one year. Interchanges typically take 3-5 years

Lower cost—RCIs are often less expensive than constructing an intersection with a stop light and are a fraction the cost of building an interchange