

# Mitigation & Protection Commitments

The Recommended Plan will include commitments by the Ontario Ministry of Transportation (MTO) and the Minnesota Department of Transportation (MnDOT) to eliminate or reduce impacts, and to future consultation with the public and other stakeholders.

In general, these commitments will be carried out during subsequent study stages, and in some cases, during construction. *The Ontario Transportation Environmental Study Report (TESR)*, the *Canadian Environmental Assessment Act Project Description*, and the *U.S. Environmental Document*, will contain comprehensive details of these commitments.

## CURRENT STUDY:

Environmental investigations completed as part of this Preliminary Design and Environmental Assessment Study have identified key constraint and high sensitivity areas which will be addressed through appropriate mitigation and protection measures.

The Preferred Plan includes the following site-specific mitigation measures:

### Natural Environment:

- Mitigate fisheries impacts in accordance with the MTO/Department of Fisheries and Oceans (DFO)/Ministry of Natural Resources and Forestry (MNRF) Fisheries Protocol and the Minnesota Department of Natural Resources (MnDNR) and U.S. Fish and Wildlife Service (USFWS) guidelines
- Restrict vegetation removal along future bridge alignment
- Identify and mitigate Species-at-Risk/Endangered Species impacts in accordance with U.S. and Canadian regulations; where required confirm absence or presence of Species-at-Risk/Endangered Species
- Adhere to timing restrictions for in-water work and vegetation clearing as defined by the MnDNR, USFWS, MTO, DFO, MNRF, Environment and Climate Change Canada (ECCC)
- Minimize and mitigate for wetland impacts through the U.S. Army Corps of Engineers 404 permit

### Social and Cultural Environment:

- Develop a Memorandum of Agreement between MnDOT, the U.S. Federal Highway Administration and the Minnesota State Historic Preservation Office for removal of historic bridge #9412
- Impacts to adjacent Peace Park, owned by the City of Baudette, will be temporary for grading of new bridge abutment.

## DETAIL DESIGN:

- Complete design to a constructability level of detail
- Engineering work in the areas of:
  - Bridge
  - Drainage and stormwater
  - Highway design
  - Foundations
  - Surveys
- Public and stakeholders will be notified of the start of the Detail Design Phase
- Develop a construction staging and traffic management plan
- Confirm drainage and stormwater management requirements
- Confirm utility relocations and realignments
- Confirm and mitigate fish, terrestrial, and species-at-risk impacts
- Complete additional environmental investigations

## CONSTRUCTION:

- Environmental monitoring during construction
- Erosion and sediment control
- Control construction dust and construction noise
- Construction of replacement Baudette/Rainy River International Bridge is tentatively scheduled for 2018

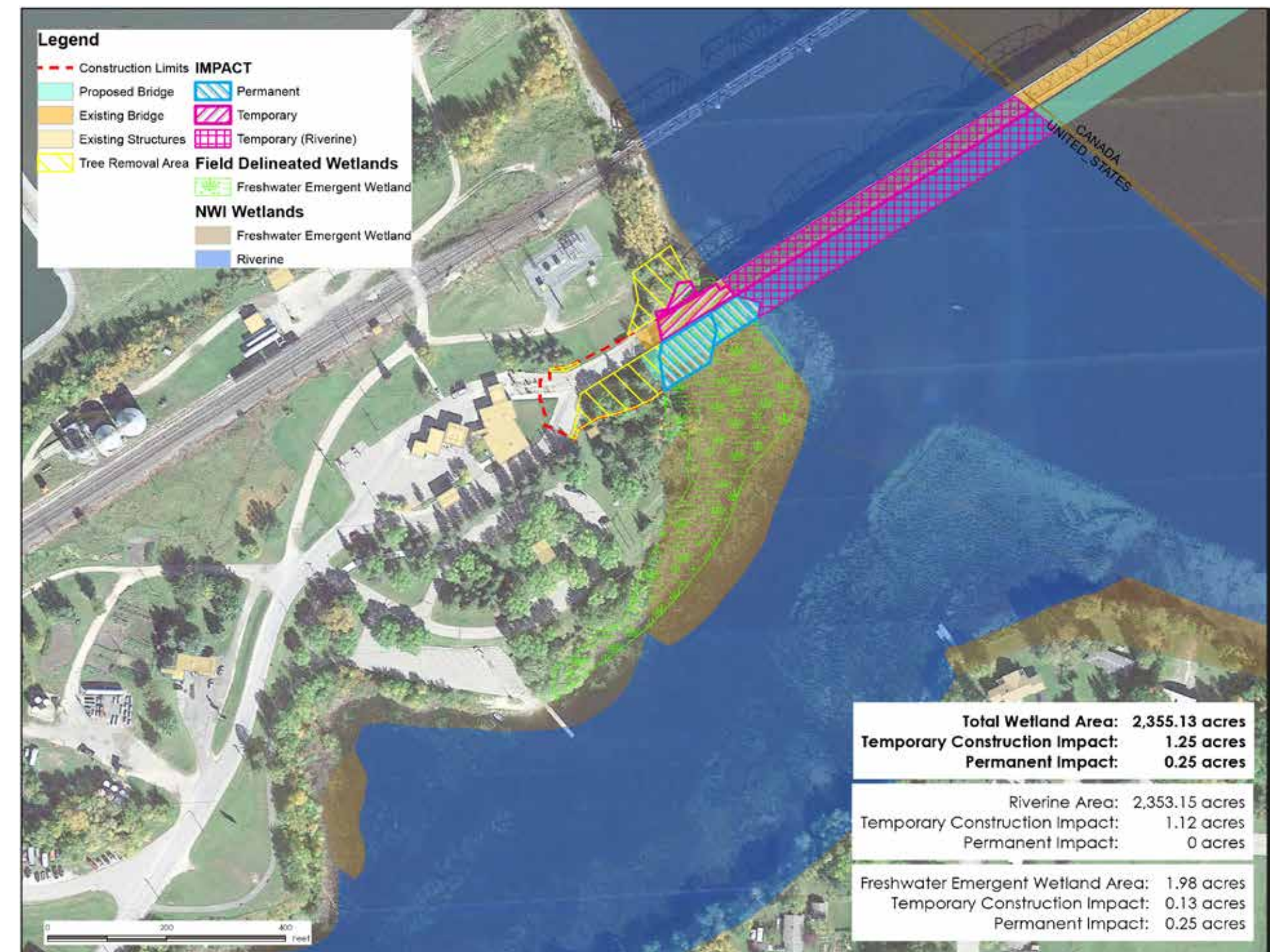


Figure 1: Wetland and Riverine impacts will be mitigated through permitting.



Figure 2: Removal of Historic Bridge will be mitigated as defined in the Memorandum of Agreement

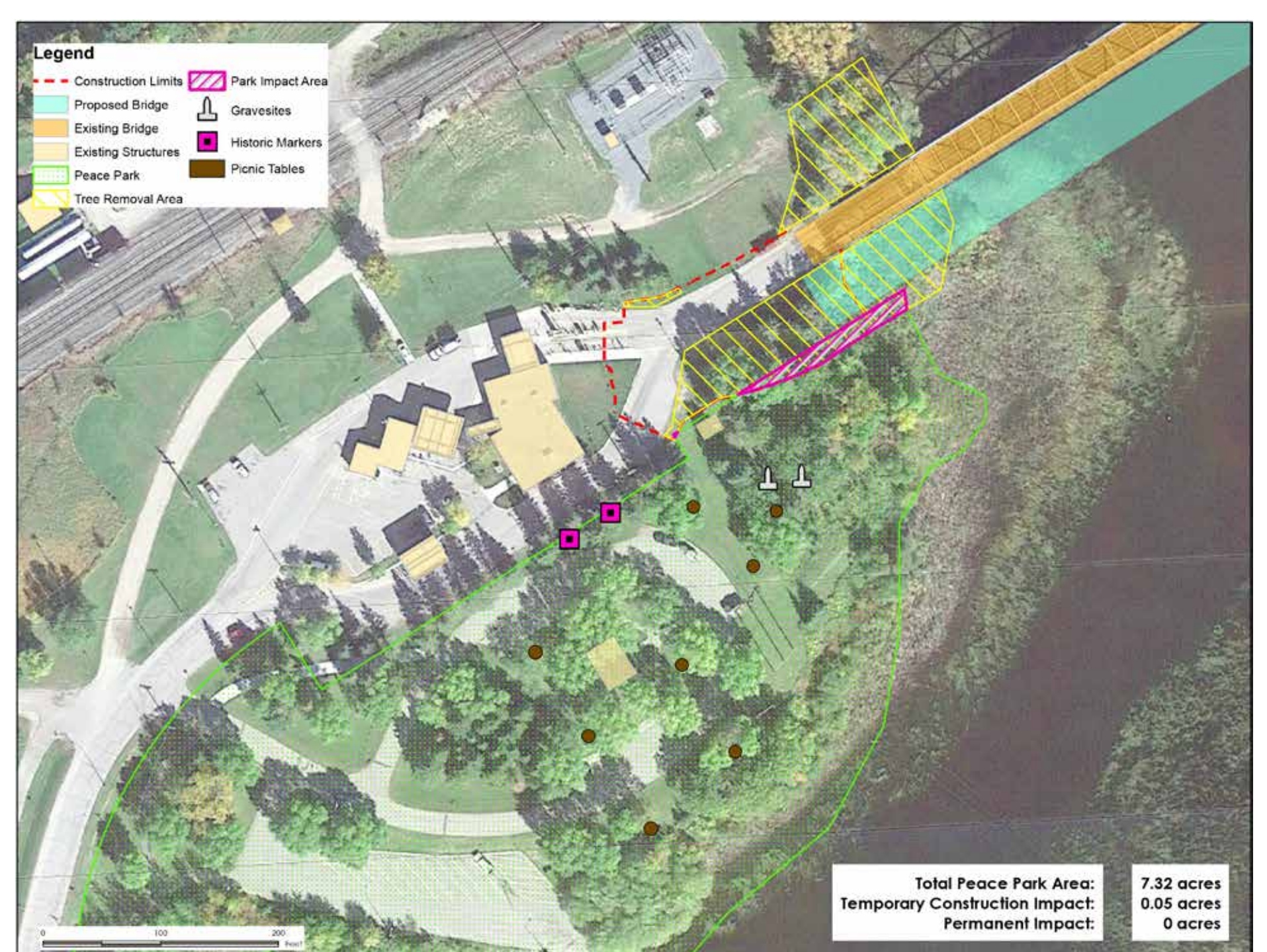


Figure 3: Temporary impacts to Baudette's Peace Park will occur during construction of new bridge abutment.